

V&V Reference Report

L2 ASCDS Version : 8.4.5

Observation 60576 - L2 Version 3
Chandra X-Ray Center

L2 Processing Date : Nov 2 2012

Contents

1	Front	2
2	OBI	3
2.1	OBI	3
2.1.1	Images	3
2.1.2	Bias	3
2.1.3	Parameters	4
2.1.4	Events	4
2.2	Compared Parameters	5
2.3	Star Slots	6
2.4	FID Slots	6
A	Summary	7
A.1	Status	7
A.2	Comments	7

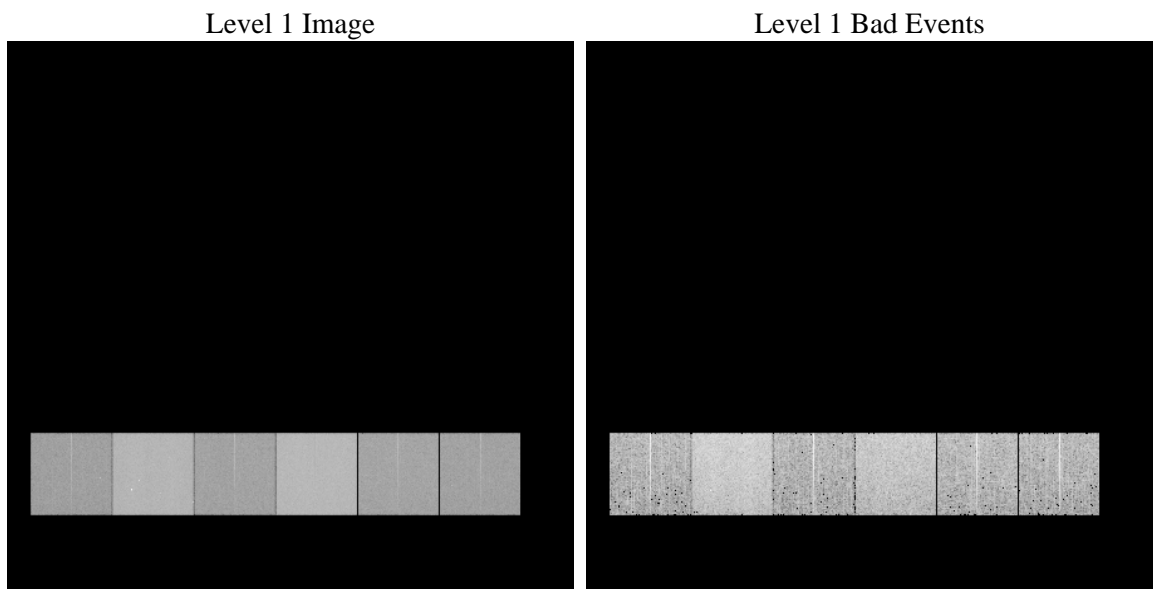
1 Front

seq_num	 	Sequence number
obs_id	60576	Observation id
title	ACIS-456789 diagnostics	Proposal title
observer	CHANDRA engineering request/realtime commanding	Principal investig
object	 	Source name
dtcycle	0	
cycle	P	events from which exps? Prim/Second/Both
ra_targ	0.0	Observer's specified target RA [deg]
dec_targ	0.0	Observer's specified target Dec [deg]
ra_nom	299.0450008539	Nominal RA [deg]
dec_nom	-52.007195454754	Nominal Dec [deg]
roll_nom	312.57869800287	Nominal Roll [deg]
revision	3	Processing version of data
ontime	8447.7689439952	Sum of GTIs [s]
livetime	8340.7982069906	Livetime [s]
ontime4	3639.6800827682	Sum of GTIs [s]
ontime5	8450.9688742757	Sum of GTIs [s]
ontime6	3916.794878602	Sum of GTIs [s]
ontime7	8447.7689439952	Sum of GTIs [s]
ontime8	4088.486512959	Sum of GTIs [s]
ontime9	3824.4179884493	Sum of GTIs [s]
l2events	1247093	Number of level 2 events

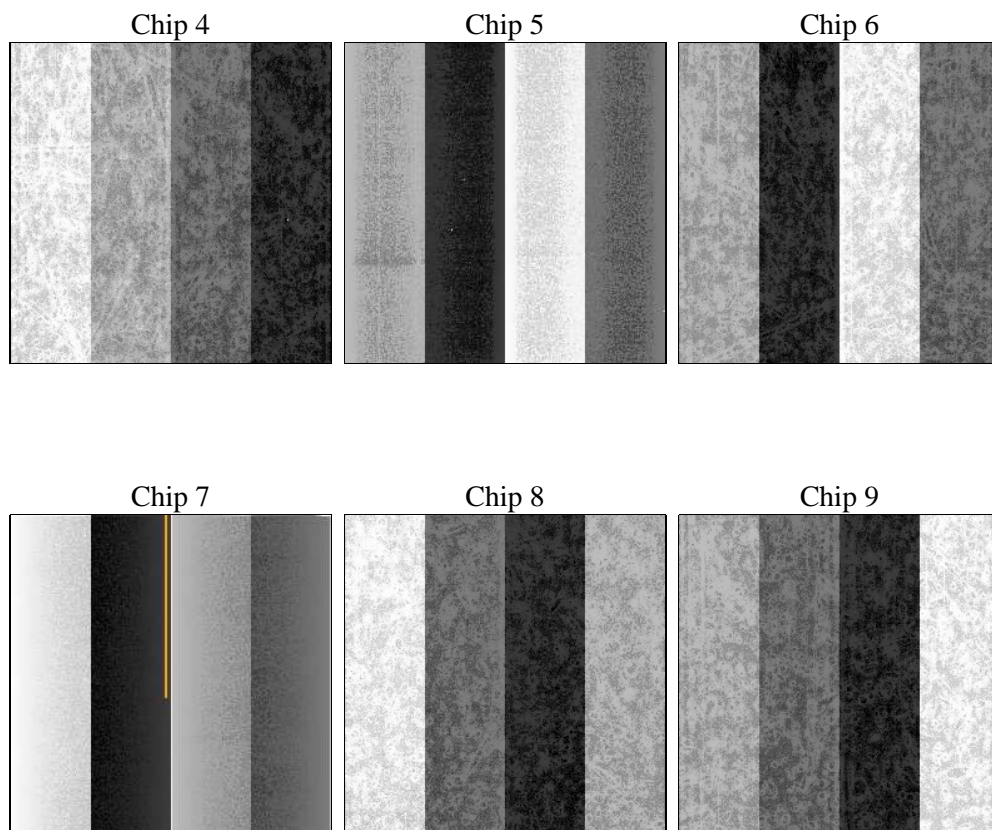
2 OBI

2.1 OBI

2.1.1 Images



2.1.2 Bias



2.1.3 Parameters

obi_num	0	Obi number	sched_exp_time	0.0	[s] Scheduled observation exposure time
ascdsver	8.4.5	Processing system revision	ontime	8447.7689439952	Sum of GTIs [s]
caldsver	4.5.2	 	ontime4	3639.6800827682	Sum of GTIs [s]
date	2012-11-02T19:03:24	Date and time of file creation	ontime5	8450.9688742757	Sum of GTIs [s]
revision	3	Processing version of data	ontime6	3916.794878602	Sum of GTIs [s]
			ontime7	8447.7689439952	Sum of GTIs [s]
			ontime8	4088.486512959	Sum of GTIs [s]
			ontime9	3824.4179884493	Sum of GTIs [s]
			l1events	1539706	Number of level 1 events

2.1.4 Events

	ccd 4	ccd 5	ccd 6	ccd 7	ccd 8	ccd 9		ccd 4	ccd 5	ccd 6	ccd 7	ccd 8	ccd 9
level 1 events	173199	370866	194640	405142	208633	187226	grade 0 events	82825	61809	88494	88733	94952	85597
rejected events	30020	60092	30269	48068	34231	30872		47%	16%	45%	21%	45%	45%
rejected %	17%	16%	15%	11%	16%	16%	grade 1 events	700	249	486	231	545	568
								0%	0%	0%	0%	0%	0%
							grade 2 events	21854	122197	28071	78807	30240	26438
								12%	32%	14%	19%	14%	14%
							grade 3 events	9540	16272	9916	34709	10898	9873
								5%	4%	5%	8%	5%	5%
							grade 4 events	9678	15987	10104	33897	11032	9786
								5%	4%	5%	8%	5%	5%
							grade 5 events	1835	9458	2053	8654	2409	2071
								1%	2%	1%	2%	1%	1%
							grade 6 events	19282	94509	27786	120928	27411	24660
								11%	25%	14%	29%	13%	13%
							grade 7 events	27485	50385	27730	39183	31146	28233
								15%	13%	14%	9%	14%	15%

2.2 Compared Parameters

Parameter	Planned	Actual	Parameter	Planned	Actual
Instrument	ACIS	ACIS	Obspar format version number	7	7
Detector	ACIS-456789	ACIS-456789	Obspar file type	PREDICTED	ACTUAL
Grating	NONE	NONE	Obspar update status	NONE	UPDATED
Data mode	FAINT	FAINT	On-chip summing requested	N	N
Observation mode	SECONDARY	SECONDARY	Subarray requested	NONE	NONE
[deg] Pointing RA	0	299.0450008539034	Alternating exposures requested	N	N
[deg] Pointing Dec	0	-52.00719545475408	[s] Primary exposure time	0.000000	3.2
[deg] Pointing Roll	0.0	312.5786980028705			
[mm] SIM focus pos	-0.684267	-0.6828225247311905			
[mm] SIM defocus	0	0.8505141146731063			
[mm] SIM translation stage pos	-190.132523	250.466033080201			
[mm] SIM translation stage offset	0	-0.01005468664627074			
[s] Observation start time (MET)	178229726.507459	178229725.48273			
Observation start date	2003-08-25T20:15:27	2003-08-25T20:15:25			
[s] Observation end time (MET)	178253272.808468	178253271.78374			
Observation end date	2003-08-26T02:47:53	2003-08-26T02:47:51			
Read mode	TIMED	TIMED			

2.3 Star Slots

2.4 FID Slots

A Summary

A.1 Status

V&V Scientist	Jen Lauer
V&V Date (YYYY-MM-DD)	2012.12.06
V&V Edition	1
V&V Disposition and Status	OK
V&V Charge Time	8.4477689439952

A.2 Comments