

V&V Reference Report

L2 ASCDS Version : 7.6.8

Observation 60576 - L2 Version 001
Chandra X-Ray Center

L2 Processing Date : Jul 7 2006

Contents

1	Front	2
2	OBI	3
2.1	OBI	3
2.1.1	Images	3
2.1.2	Bias	3
2.1.3	Parameters	4
2.1.4	Events	4
2.2	Compared Parameters	5
2.3	Aspect	6
2.4	Star Slots	8
2.5	FID Slots	8
A	Summary	9
A.1	Status	9
A.2	Comments	9

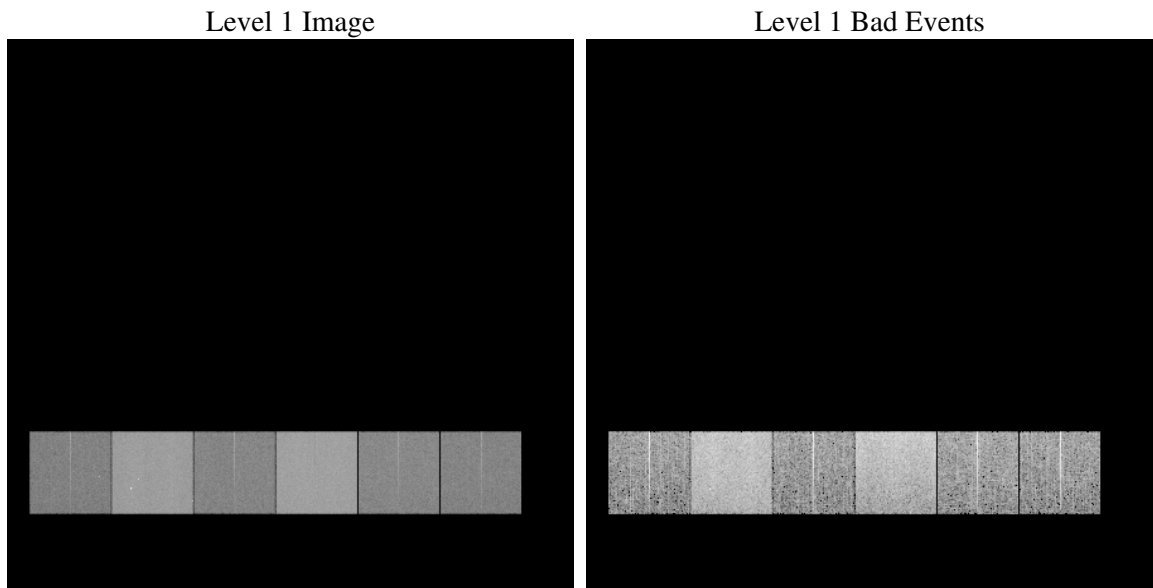
1 Front

seq_num	
obs_id	60576
title	ACIS-456789 diagnostics
observer	CHANDRA engineering request/realtime commanding
object	
dtcycle	0
cycle	P
ra_targ	0.0
dec_targ	0.0
ra_nom	299.04497035983
dec_nom	-52.007174973786
roll_nom	312.57867396098
revision	2
ontime	8447.8883454502
livetime	8340.9160965124
ontime4	3638.3932570219
ontime5	8451.1703557372
ontime6	3917.0670128465
ontime7	8447.8883454502
ontime8	4088.8407271802
ontime9	3822.9670026898
l2events	1224070

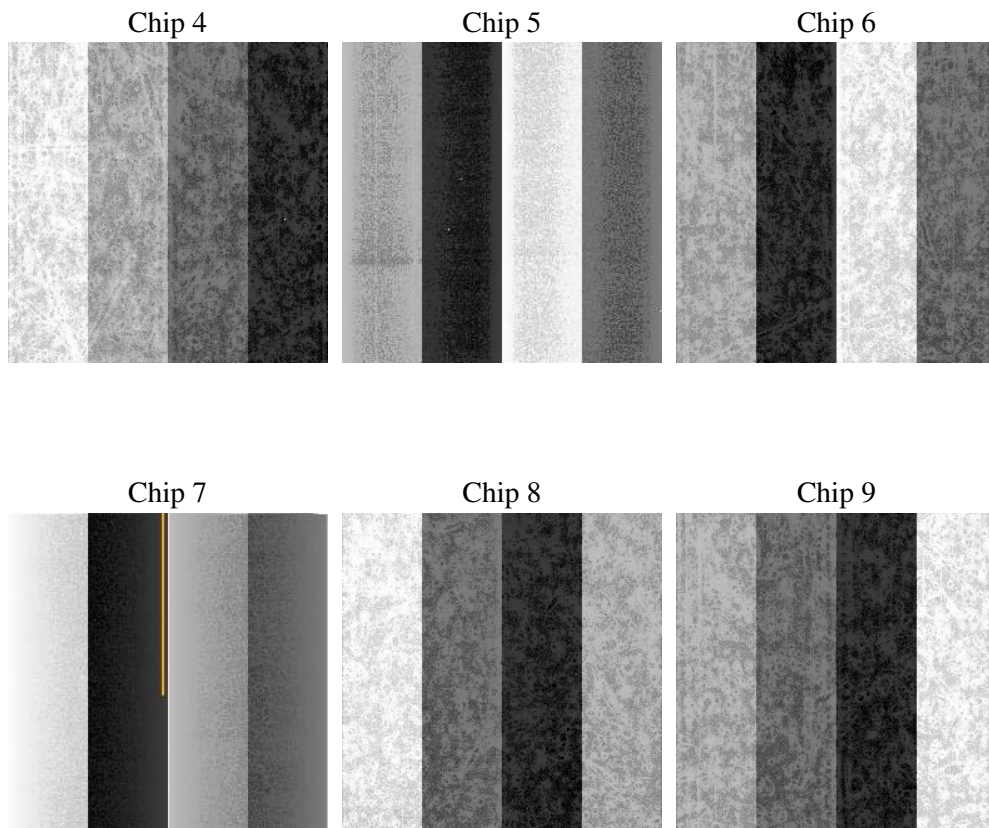
2 OBI

2.1 OBI

2.1.1 Images



2.1.2 Bias



2.1.3 Parameters

obi_num	0
ascdsver	7.6.8
caldbver	3.2.2
date	2006-07-08T02:26:15
revision	2

sched_exp_time	0.0
ontime	8449.2982912064
ontime4	3639.6800827682
ontime5	8452.5392614901
ontime6	3918.4063058197
ontime7	8449.2982912064
ontime8	4090.1800201535
ontime9	3824.4179884493
l1events	1539706

2.1.4 Events

	ccd 4	ccd 5	ccd 6	ccd 7	ccd 8	ccd 9
level 1 events	173199	370866	194640	405142	208633	187226
rejected events	30036	68024	30318	63619	34124	30890
rejected %	17%	18%	15%	15%	16%	16%

	ccd 4	ccd 5	ccd 6	ccd 7	ccd 8	ccd 9
grade 0 events	82728	31474	88200	57586	94794	85472
	47%	8%	45%	14%	45%	45%
grade 1 events	690	145	478	130	530	556
	0%	0%	0%	0%	0%	0%
grade 2 events	21952	145038	28365	107530	30402	26562
	12%	39%	14%	26%	14%	14%
grade 3 events	9503	8984	9873	23177	10865	9840
	5%	2%	5%	5%	5%	5%
grade 4 events	9629	8519	10059	22473	10998	9743
	5%	2%	5%	5%	5%	5%
grade 5 events	1834	6571	2055	7349	2406	2061
	1%	1%	1%	1%	1%	1%
grade 6 events	19351	108827	27825	130757	27450	24719
	11%	29%	14%	32%	13%	13%
grade 7 events	27512	61308	27785	56140	31188	28273
	15%	16%	14%	13%	14%	15%

2.2 Compared Parameters

Parameter	Planned	Actual	Parameter	Planned	Actual
Instrument	ACIS	ACIS	Obspar format version number	6	6
Detector	ACIS-456789	ACIS-456789	Obspar file type	PREDICTED	ACTUAL
Grating	NONE	NONE	Obspar update status	NONE	UPDATED
Data mode	FAINT	FAINT	On-chip summing requested	N	N
Observation mode	SECONDARY	SECONDARY	Subarray requested	NONE	NONE
Pointing RA	0	299.0449703598276	Alternating exposures requested	N	N
Pointing Dec	0	-52.00717497378628	Primary exposure time	0.000000	3.2
Pointing Roll	0.0	312.5786739609781			
SIM focus pos (mm)	-0.684267	-0.6828225247311905			
SIM defocus (mm)	0	0.8505141146731063			
SIM translation stage pos (mm)	-190.132523	250.466033080201			
SIM translation stage offset (mm)	0	-0.01005468664627074			
Observation start time	178229726.507459	178229725.48273			
Observation start date	2003-08-25T20:15:27	2003-08-25T20:15:25			
Observation end time	178253272.808468	178253271.78374			
Observation end date	2003-08-26T02:47:53	2003-08-26T02:47:51			
Read mode	TIMED	TIMED			

2.3 Aspect

2.4 Star Slots

2.5 FID Slots

A Summary

A.1 Status

V&V Scientist	Jen Lauer
V&V Date (YYYY-MM-DD)	2006.07.10
V&V Edition	1
V&V Disposition and Status	OK
V&V Charge Time	8.44788834

A.2 Comments

The ACIS focal plane temperature was above calibration limits for the entire observation.