

V&V Reference Report

L2 ASCDS Version : 8.4.5

Observation 60574 - L2 Version 3
Chandra X-Ray Center

L2 Processing Date : Nov 2 2012

Contents

1	Front	2
2	OBI	3
2.1	OBI	3
2.1.1	Images	3
2.1.2	Bias	3
2.1.3	Parameters	4
2.1.4	Events	4
2.2	Compared Parameters	5
2.3	Star Slots	6
2.4	FID Slots	6
A	Summary	7
A.1	Status	7
A.2	Comments	7

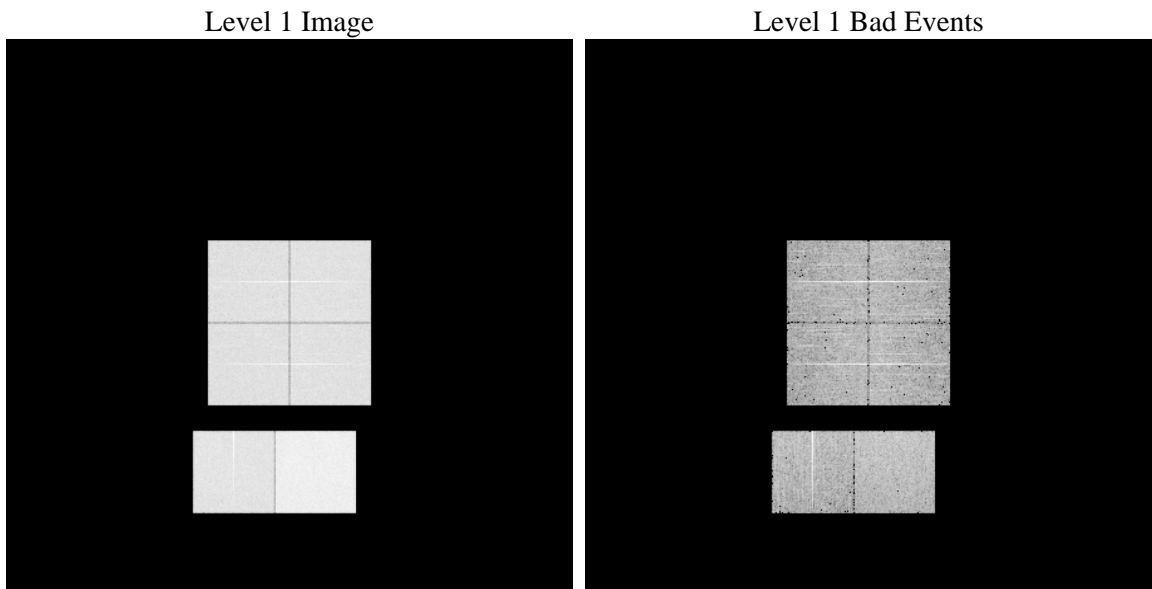
1 Front

seq_num	 	Sequence number
obs_id	60574	Observation id
title	ACIS-012367 diagnostics	Proposal title
observer	CHANDRA engineering request/realtime commanding	Principal investig
object	 	Source name
dtcycle	0	
cycle	P	events from which exps? Prim/Second/Both
ra_targ	0.0	Observer's specified target RA [deg]
dec_targ	0.0	Observer's specified target Dec [deg]
ra_nom	299.04455563263	Nominal RA [deg]
dec_nom	-52.008210907045	Nominal Dec [deg]
roll_nom	310.45797792232	Nominal Roll [deg]
revision	3	Processing version of data
ontime	8441.5999685526	Sum of GTIs [s]
livetime	8334.7073468295	Livetime [s]
ontime0	5310.8195215762	Sum of GTIs [s]
ontime1	5482.8356106877	Sum of GTIs [s]
ontime2	5171.7424486578	Sum of GTIs [s]
ontime3	5281.7713178396	Sum of GTIs [s]
ontime6	5618.7114595175	Sum of GTIs [s]
ontime7	8441.5999685526	Sum of GTIs [s]
l2events	1254825	Number of level 2 events

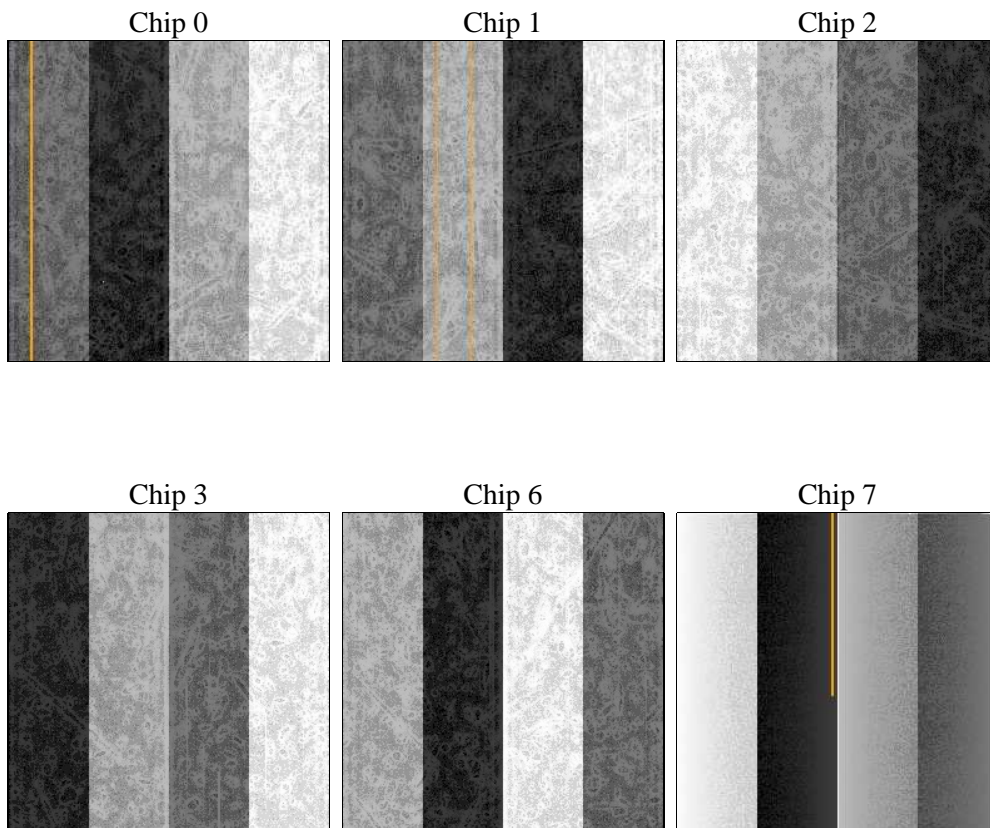
2 OBI

2.1 OBI

2.1.1 Images



2.1.2 Bias



2.1.3 Parameters

obi_num	0	Obi number	sched_exp_time	0.0	[s] Scheduled observation exposure time
ascdsver	8.4.5	Processing system revision	ontime	8441.5999685526	Sum of GTIs [s]
caldsver	4.5.2	 	ontime0	5310.8195215762	Sum of GTIs [s]
date	2012-11-02T20:08:31	Date and time of file creation	ontime1	5482.8356106877	Sum of GTIs [s]
revision	3	Processing version of data	ontime2	5171.7424486578	Sum of GTIs [s]
			ontime3	5281.7713178396	Sum of GTIs [s]
			ontime6	5618.7114595175	Sum of GTIs [s]
			ontime7	8441.5999685526	Sum of GTIs [s]
			l1events	1537519	Number of level 1 events

2.1.4 Events

	ccd 0	ccd 1	ccd 2	ccd 3	ccd 6	ccd 7		ccd 0	ccd 1	ccd 2	ccd 3	ccd 6	ccd 7
level 1 events	226239	234032	224184	229370	252497	371197	grade 0 events	107025	110085	107368	109980	116831	79935
rejected events	33996	34541	34305	35947	38849	45546		47%	47%	47%	47%	46%	21%
rejected %	15%	14%	15%	15%	15%	12%	grade 1 events	574	545	599	640	554	203
								0%	0%	0%	0%	0%	0%
							grade 2 events	33150	35691	31484	32377	36571	72250
								14%	15%	14%	14%	14%	19%
							grade 3 events	12458	12542	12414	12635	13063	32712
								5%	5%	5%	5%	5%	8%
							grade 4 events	12277	12374	12352	12541	13382	32055
								5%	5%	5%	5%	5%	8%
							grade 5 events	2288	2255	2178	2416	2645	8406
								1%	0%	0%	1%	1%	2%
							grade 6 events	27786	29235	26608	26483	34289	109499
								12%	12%	11%	11%	13%	29%
							grade 7 events	30681	31305	31181	32298	35162	36137
								13%	13%	13%	14%	13%	9%

2.2 Compared Parameters

Parameter	Planned	Actual	Parameter	Planned	Actual
Instrument	ACIS	ACIS	Obspar format version number	7	7
Detector	ACIS-012367	ACIS-012367	Obspar file type	PREDICTED	ACTUAL
Grating	NONE	NONE	Obspar update status	NONE	UPDATED
Data mode	FAINT	FAINT	On-chip summing requested	N	N
Observation mode	SECONDARY	SECONDARY	Subarray requested	NONE	NONE
[deg] Pointing RA	0	299.0445556326316	Alternating exposures requested	N	N
[deg] Pointing Dec	0	-52.00821090704545	[s] Primary exposure time	0.000000	3.2
[deg] Pointing Roll	0.0	310.4579779223184			
[mm] SIM focus pos	-0.782348	-1.038866356238299			
[mm] SIM defocus	0	0.4944702831659975			
[mm] SIM translation stage pos	-233.592463	250.4635187648994			
[mm] SIM translation stage offset	0	-0.007540371344731511			
[s] Observation start time (MET)	178456386.817159	178456385.79243			
Observation start date	2003-08-28T11:13:07	2003-08-28T11:13:05			
[s] Observation end time (MET)	178478904.018124	178478902.99339			
Observation end date	2003-08-28T17:28:24	2003-08-28T17:28:22			
Read mode	TIMED	TIMED			

2.3 Star Slots

2.4 FID Slots

A Summary

A.1 Status

V&V Scientist	Jen Lauer
V&V Date (YYYY-MM-DD)	2012.12.06
V&V Edition	1
V&V Disposition and Status	OK
V&V Charge Time	8.4415999685526

A.2 Comments