

V&V Reference Report

L2 ASCDS Version : 7.6.8

Observation 60574 - L2 Version 001
Chandra X-Ray Center

L2 Processing Date : Jul 8 2006

Contents

1	Front	2
2	OBI	3
2.1	OBI	3
2.1.1	Images	3
2.1.2	Bias	3
2.1.3	Parameters	4
2.1.4	Events	4
2.2	Compared Parameters	5
2.3	Aspect	6
2.4	Star Slots	8
2.5	FID Slots	8
A	Summary	9
A.1	Status	9
A.2	Comments	9

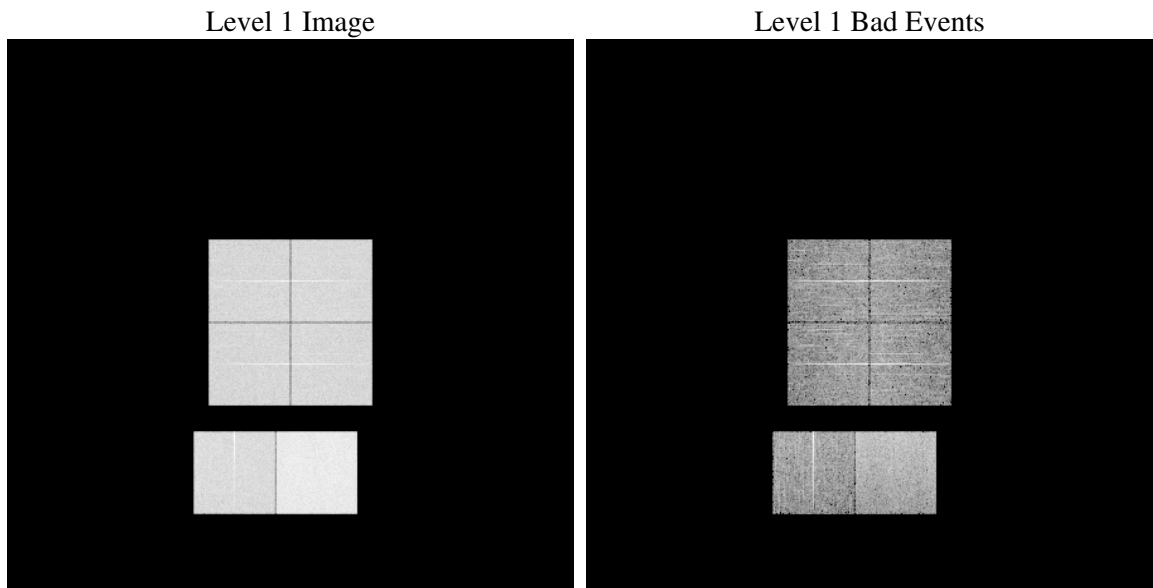
1 Front

seq_num	
obs_id	60574
title	ACIS-012367 diagnostics
observer	CHANDRA engineering request/realtime commanding
object	
dtcycle	0
cycle	P
ra_targ	0.0
dec_targ	0.0
ra_nom	299.04452639127
dec_nom	-52.008189755345
roll_nom	310.45795486984
revision	2
ontime	8441.5999685526
livetime	8334.7073468295
ontime0	5310.8195215762
ontime1	5482.591254741
ontime2	5170.1424486637
ontime3	5281.6500819027
ontime6	5617.4379452765
ontime7	8441.5999685526
l2events	1240379

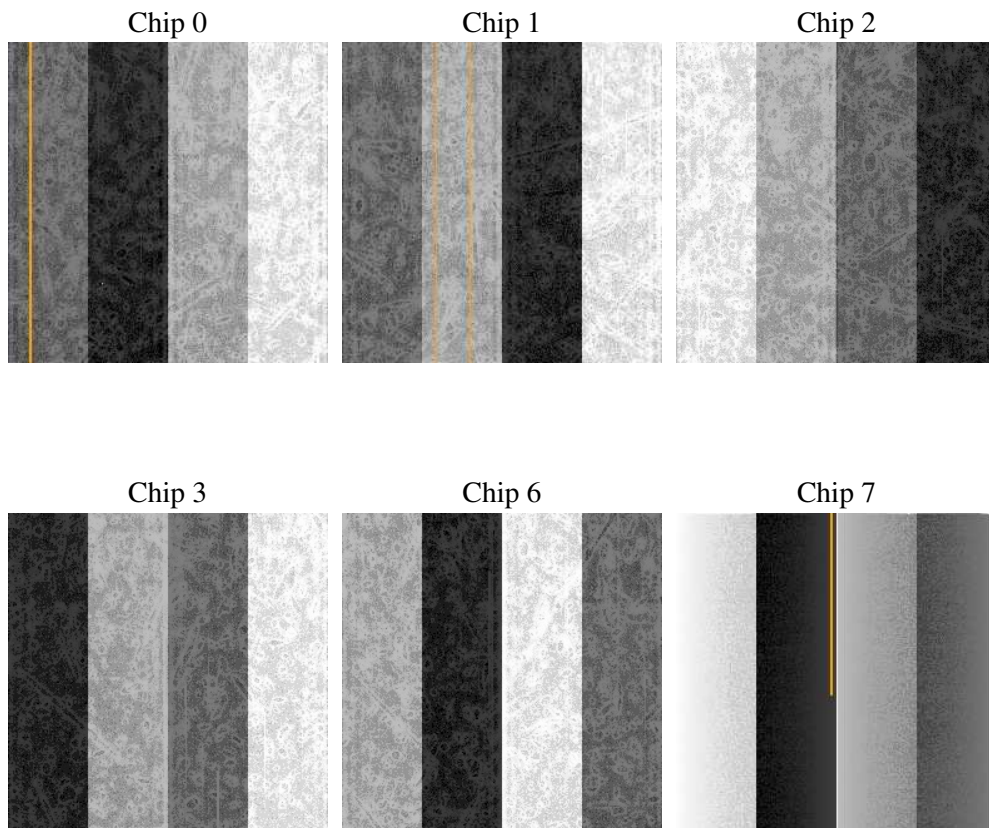
2 OBI

2.1 OBI

2.1.1 Images



2.1.2 Bias



2.1.3 Parameters

obi_num	0
ascdsver	7.6.8
caldbver	3.2.2
date	2006-07-08T03:36:50
revision	2

sched_exp_time	0.0
ontime	8462.2624018788
ontime0	5324.9999346435
ontime1	5496.7717176378
ontime2	5182.396515429
ontime3	5299.0715449452
ontime6	5632.8919423521
ontime7	8462.2624018788
l1events	1537519

2.1.4 Events

	ccd 0	ccd 1	ccd 2	ccd 3	ccd 6	ccd 7
level 1 events	226239	234032	224184	229370	252497	371197
rejected events	34125	34691	34430	36099	39019	59470
rejected %	15%	14%	15%	15%	15%	16%

	ccd 0	ccd 1	ccd 2	ccd 3	ccd 6	ccd 7
grade 0 events	106866	109857	107240	109853	116392	52563
	47%	46%	47%	47%	46%	14%
grade 1 events	565	538	582	630	541	124
	0%	0%	0%	0%	0%	0%
grade 2 events	33308	35920	31615	32507	37012	97375
	14%	15%	14%	14%	14%	26%
grade 3 events	12407	12499	12363	12587	12982	22044
	5%	5%	5%	5%	5%	5%
grade 4 events	12238	12316	12309	12493	13303	21214
	5%	5%	5%	5%	5%	5%
grade 5 events	2283	2247	2176	2409	2640	7239
	1%	0%	0%	1%	1%	1%
grade 6 events	27859	29310	26683	26546	34391	119417
	12%	12%	11%	11%	13%	32%
grade 7 events	30713	31345	31216	32345	35236	51221
	13%	13%	13%	14%	13%	13%

2.2 Compared Parameters

Parameter	Planned	Actual	Parameter	Planned	Actual
Instrument	ACIS	ACIS	Obspar format version number	6	6
Detector	ACIS-012367	ACIS-012367	Obspar file type	PREDICTED	ACTUAL
Grating	NONE	NONE	Obspar update status	NONE	UPDATED
Data mode	FAINT	FAINT	On-chip summing requested	N	N
Observation mode	SECONDARY	SECONDARY	Subarray requested	NONE	NONE
Pointing RA	0	299.0445263912703	Alternating exposures requested	N	N
Pointing Dec	0	-52.00818975534511	Primary exposure time	0.000000	3.2
Pointing Roll	0.0	310.4579548698367			
SIM focus pos (mm)	-0.782348	-1.038866356238299			
SIM defocus (mm)	0	0.4944702831659975			
SIM translation stage pos (mm)	-233.592463	250.4635187648994			
SIM translation stage offset (mm)	0	-0.007540371344731511			
Observation start time	178456386.817159	178456385.79243			
Observation start date	2003-08-28T11:13:07	2003-08-28T11:13:05			
Observation end time	178478904.018124	178478902.99339			
Observation end date	2003-08-28T17:28:24	2003-08-28T17:28:22			
Read mode	TIMED	TIMED			

2.3 Aspect

2.4 Star Slots

2.5 FID Slots

A Summary

A.1 Status

V&V Scientist	Jen Lauer
V&V Date (YYYY-MM-DD)	2006.07.10
V&V Edition	1
V&V Disposition and Status	OK
V&V Charge Time	8.44159996

A.2 Comments

The ACIS focal plane temperature was above calibration limits for the entire observation.