

V&V Reference Report

L2 ASCDS Version : 8.4.5

Observation 60564 - L2 Version 3
Chandra X-Ray Center

L2 Processing Date : Nov 3 2012

Contents

1	Front	2
2	OBI	3
2.1	OBI	3
2.1.1	Images	3
2.1.2	Bias	3
2.1.3	Parameters	4
2.1.4	Events	4
2.2	Compared Parameters	5
2.3	Star Slots	6
2.4	FID Slots	6
A	Summary	7
A.1	Status	7
A.2	Comments	7

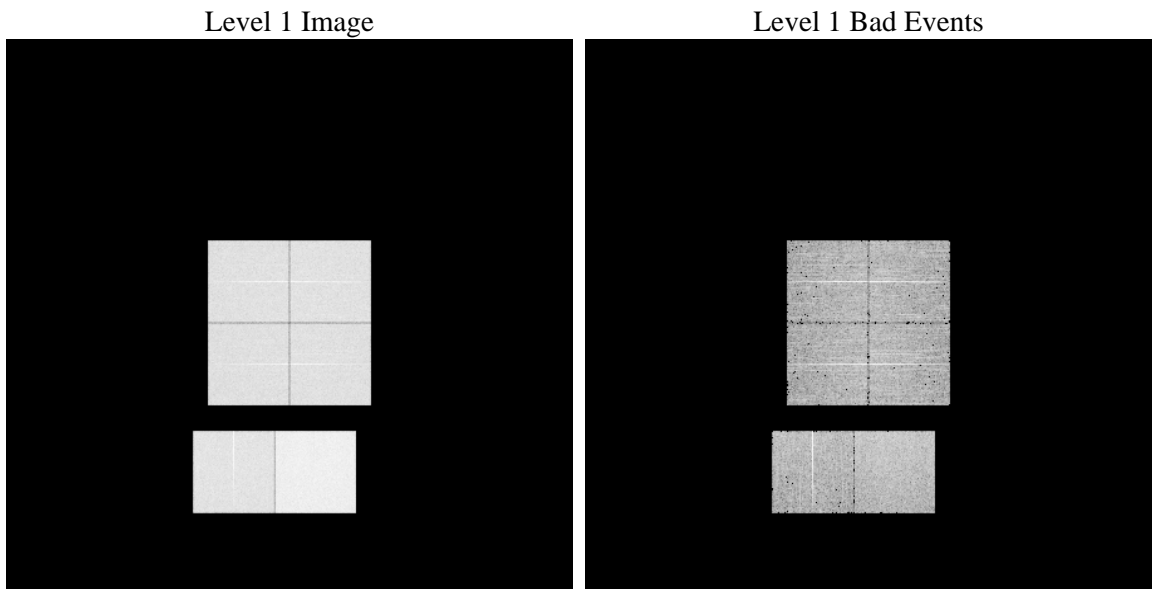
1 Front

seq_num	 	Sequence number
obs_id	60564	Observation id
title	ACIS-012367 diagnostics	Proposal title
observer	CHANDRA engineering request/realtime commanding	Principal investig
object	 	Source name
dtcycle	0	
cycle	P	events from which exps? Prim/Second/Both
ra_targ	0.0	Observer's specified target RA [deg]
dec_targ	0.0	Observer's specified target Dec [deg]
ra_nom	333.98231446965	Nominal RA [deg]
dec_nom	18.976781945148	Nominal Dec [deg]
roll_nom	201.39837848316	Nominal Roll [deg]
revision	3	Processing version of data
ontime	8419.199968636	Sum of GTIs [s]
livetime	8312.5909891996	Livetime [s]
ontime0	5210.9194646776	Sum of GTIs [s]
ontime1	5337.3587332964	Sum of GTIs [s]
ontime2	4997.0965485275	Sum of GTIs [s]
ontime3	5055.2700046003	Sum of GTIs [s]
ontime6	5525.4189029038	Sum of GTIs [s]
ontime7	8419.199968636	Sum of GTIs [s]
l2events	1254208	Number of level 2 events

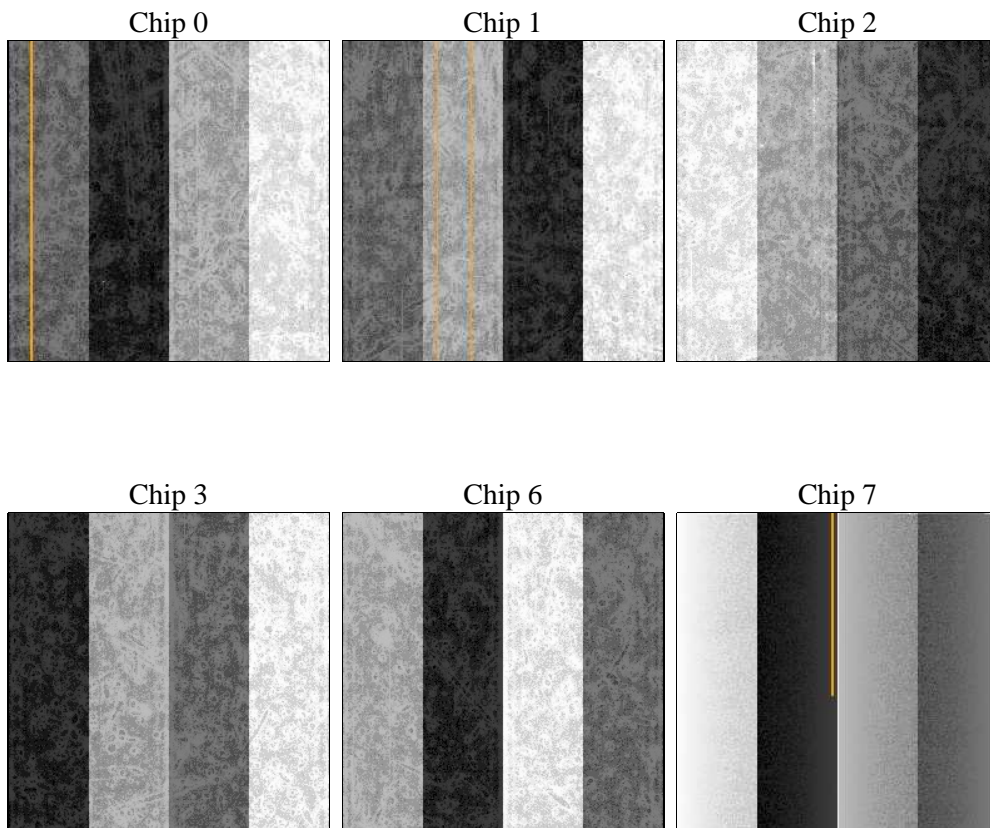
2 OBI

2.1 OBI

2.1.1 Images



2.1.2 Bias



2.1.3 Parameters

obi_num	0	Obi number	sched_exp_time	0.0	[s] Scheduled observation exposure time
ascdsver	8.4.5	Processing system revision	ontime	8419.199968636	Sum of GTIs [s]
caldbver	4.5.2	 	ontime0	5210.9194646776	Sum of GTIs [s]
date	2012-11-03T21:27:38	Date and time of file creation	ontime1	5337.3587332964	Sum of GTIs [s]
revision	3	Processing version of data	ontime2	4997.0965485275	Sum of GTIs [s]
			ontime3	5055.2700046003	Sum of GTIs [s]
			ontime6	5525.4189029038	Sum of GTIs [s]
			ontime7	8419.199968636	Sum of GTIs [s]
			l1events	1538068	Number of level 1 events

2.1.4 Events

	ccd 0	ccd 1	ccd 2	ccd 3	ccd 6	ccd 7		ccd 0	ccd 1	ccd 2	ccd 3	ccd 6	ccd 7
level 1 events	227909	234158	221514	226449	252152	375886	grade 0 events	107249	109043	106194	107380	117004	81745
rejected events	34399	35787	34170	36224	38185	46042		47%	46%	47%	47%	46%	21%
rejected %	15%	15%	15%	15%	15%	12%	grade 1 events	522	513	600	629	572	229
								0%	0%	0%	0%	0%	0%
							grade 2 events	33416	35485	31182	32188	36668	72779
								14%	15%	14%	14%	14%	19%
							grade 3 events	12478	12649	12197	12447	13208	32903
								5%	5%	5%	5%	5%	8%
							grade 4 events	12402	12404	12259	12516	13207	32860
								5%	5%	5%	5%	5%	8%
							grade 5 events	2290	2344	2122	2352	2598	8255
								1%	1%	0%	1%	1%	2%
							grade 6 events	28869	29859	26429	26619	35094	111205
								12%	12%	11%	11%	13%	29%
							grade 7 events	30683	31861	30531	32318	33801	35910
								13%	13%	13%	14%	13%	9%

2.2 Compared Parameters

Parameter	Planned	Actual
Instrument	ACIS	ACIS
Detector	ACIS-012367	ACIS-012367
Grating	NONE	NONE
Data mode	FAINT	FAINT
Observation mode	SECONDARY	SECONDARY
[deg] Pointing RA	0	333.9823144696468
[deg] Pointing Dec	0	18.9767819451483
[deg] Pointing Roll	0.0	201.398378483161
[mm] SIM focus pos	-0.782348	-0.7809083437167272
[mm] SIM defocus	0	0.7524282956875696
[mm] SIM translation stage pos	-233.592463	250.466033080201
[mm] SIM translation stage offset	0	-0.01005468664627074
[s] Observation start time (MET)	179140219.696414	179140218.6717
Observation start date	2003-09-05T09:10:20	2003-09-05T09:10:18
[s] Observation end time (MET)	179164723.347463	179164722.32275
Observation end date	2003-09-05T15:58:43	2003-09-05T15:58:42
Read mode	TIMED	TIMED

Parameter	Planned	Actual
Obspar format version number	7	7
Obspar file type	PREDICTED	ACTUAL
Obspar update status	NONE	UPDATED
On-chip summing requested	N	N
Subarray requested	NONE	NONE
Alternating exposures requested	N	N
[s] Primary exposure time	0.000000	3.2

2.3 Star Slots

2.4 FID Slots

A Summary

A.1 Status

V&V Scientist	Jen Lauer
V&V Date (YYYY-MM-DD)	2012.12.06
V&V Edition	1
V&V Disposition and Status	OK
V&V Charge Time	8.419199968636

A.2 Comments