

# V&V Reference Report

## L2 ASCDS Version : 8.4.5

Observation 60556 - L2 Version 3  
Chandra X-Ray Center

L2 Processing Date : Nov 4 2012

## Contents

<b>1</b>	<b>Front</b>	<b>2</b>
<b>2</b>	<b>OBI</b>	<b>3</b>
2.1	OBI . . . . .	3
2.1.1	Images . . . . .	3
2.1.2	Bias . . . . .	3
2.1.3	Parameters . . . . .	4
2.1.4	Events . . . . .	4
2.2	Compared Parameters . . . . .	5
2.3	Star Slots . . . . .	6
2.4	FID Slots . . . . .	6
<b>A</b>	<b>Summary</b>	<b>7</b>
A.1	Status . . . . .	7
A.2	Comments . . . . .	7

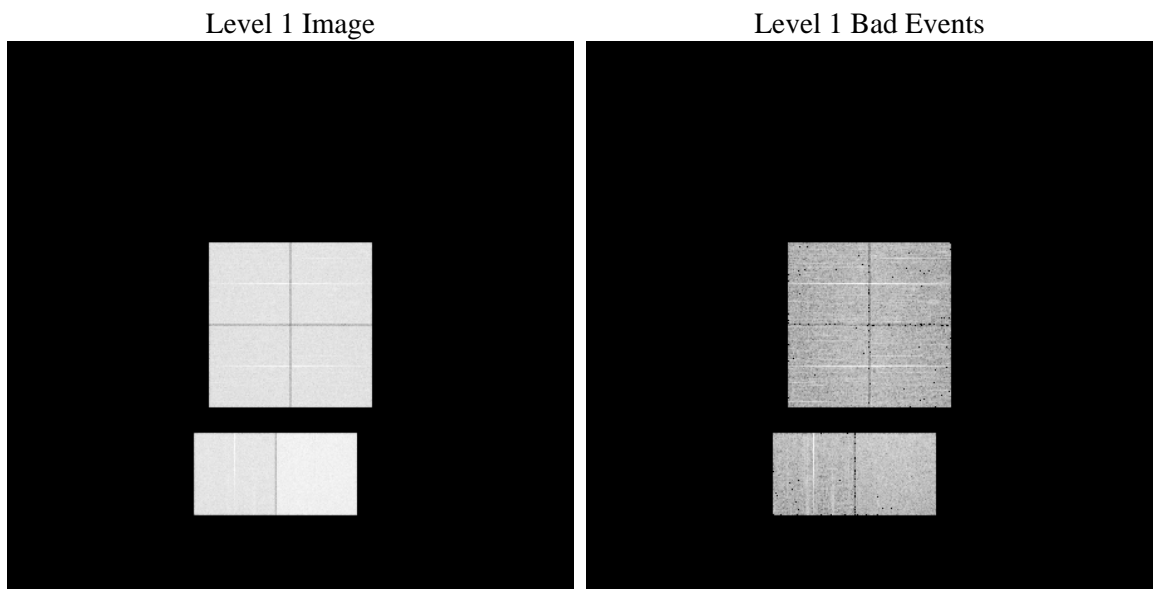
# 1 Front

seq_num	&#160	Sequence number
obs_id	60556	Observation id
title	ACIS-012367 diagnostics	Proposal title
observer	CHANDRA engineering request/realtime commanding	Principal investig
object	&#160	Source name
dtcycle	0	&#160
cycle	P	events from which exps? Prim/Second/Both
ra_targ	0.0	Observer's specified target RA [deg]
dec_targ	0.0	Observer's specified target Dec [deg]
ra_nom	300.04151178394	Nominal RA [deg]
dec_nom	-52.012865792891	Nominal Dec [deg]
roll_nom	300.44877417691	Nominal Roll [deg]
revision	3	Processing version of data
ontime	8380.3792864978	Sum of GTIs [s]
livetime	8274.2618779136	Livetime [s]
ontime0	5265.7653401792	Sum of GTIs [s]
ontime1	5399.5395765603	Sum of GTIs [s]
ontime2	5032.3314479887	Sum of GTIs [s]
ontime3	5159.7077285349	Sum of GTIs [s]
ontime6	5528.1604832411	Sum of GTIs [s]
ontime7	8380.3792864978	Sum of GTIs [s]
l2events	1247353	Number of level 2 events

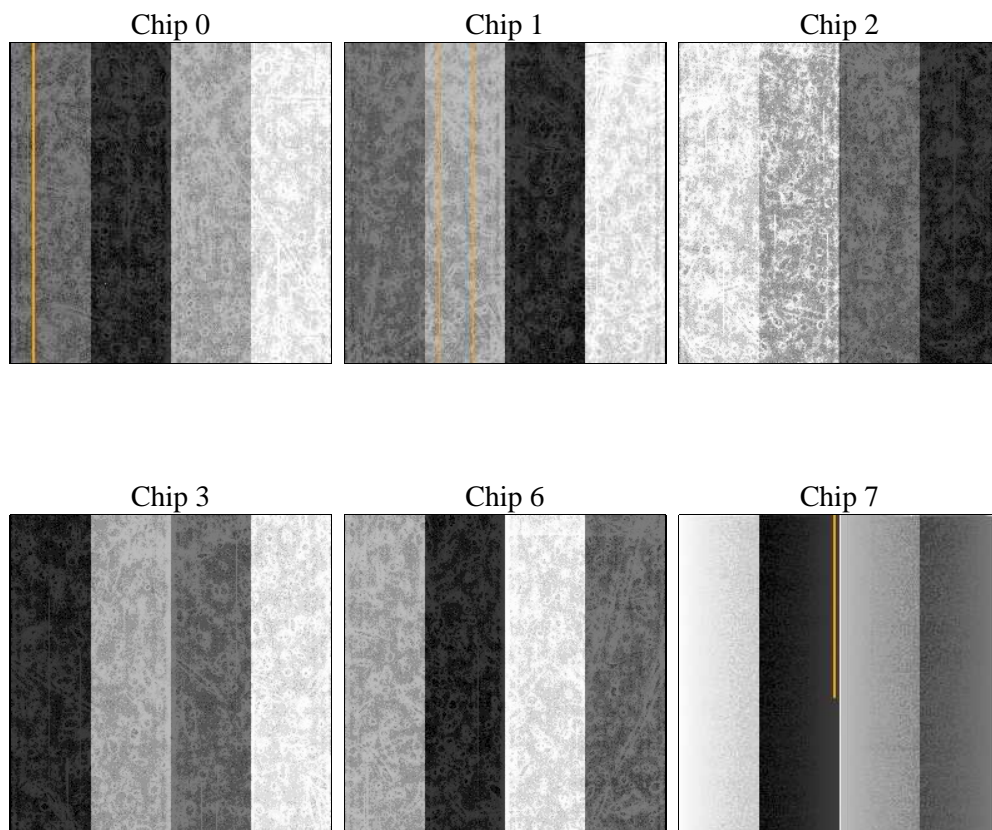
## 2 OBI

### 2.1 OBI

#### 2.1.1 Images



#### 2.1.2 Bias



### 2.1.3 Parameters

obi_num	0	Obi number	sched_exp_time	0.0	[s] Scheduled observation exposure time
ascdsver	8.4.5	Processing system revision	ontime	8380.3792864978	Sum of GTIs [s]
caldbver	4.5.2	&#160	ontime0	5265.7653401792	Sum of GTIs [s]
date	2012-11-04T02:12:50	Date and time of file creation	ontime1	5399.5395765603	Sum of GTIs [s]
revision	3	Processing version of data	ontime2	5032.3314479887	Sum of GTIs [s]
			ontime3	5159.7077285349	Sum of GTIs [s]
			ontime6	5528.1604832411	Sum of GTIs [s]
			ontime7	8380.3792864978	Sum of GTIs [s]
			l1events	1538165	Number of level 1 events

### 2.1.4 Events

	ccd 0	ccd 1	ccd 2	ccd 3	ccd 6	ccd 7		ccd 0	ccd 1	ccd 2	ccd 3	ccd 6	ccd 7
level 1 events	229304	235276	222531	227067	251734	372253	grade 0 events	107863	109913	105742	108705	116145	81093
rejected events	35832	36913	36256	36008	39490	47781		47%	46%	47%	47%	46%	21%
rejected %	15%	15%	16%	15%	15%	12%	grade 1 events	595	517	636	629	520	194
								0%	0%	0%	0%	0%	0%
							grade 2 events	33838	35431	31177	32399	36900	71637
								14%	15%	14%	14%	14%	19%
							grade 3 events	12418	12762	12263	12400	13071	33245
								5%	5%	5%	5%	5%	8%
							grade 4 events	12642	12445	12278	12533	13236	32120
								5%	5%	5%	5%	5%	8%
							grade 5 events	2219	2416	2201	2339	2603	8388
								0%	1%	0%	1%	1%	2%
							grade 6 events	28516	29668	26492	26853	34705	109493
								12%	12%	11%	11%	13%	29%
							grade 7 events	31213	32124	31742	31209	34554	36083
								13%	13%	14%	13%	13%	9%

## 2.2 Compared Parameters

Parameter	Planned	Actual	Parameter	Planned	Actual
Instrument	ACIS	ACIS	Obspar format version number	7	7
Detector	ACIS-012367	ACIS-012367	Obspar file type	PREDICTED	ACTUAL
Grating	NONE	NONE	Obspar update status	NONE	UPDATED
Data mode	FAINT	FAINT	On-chip summing requested	N	N
Observation mode	SECONDARY	SECONDARY	Subarray requested	NONE	NONE
[deg] Pointing RA	0	300.0415117839436	Alternating exposures requested	N	N
[deg] Pointing Dec	0	-52.01286579289071	[s] Primary exposure time	0.000000	3.2
[deg] Pointing Roll	0.0	300.4487741769112			
[mm] SIM focus pos	-0.782348	-0.6828225247311905			
[mm] SIM defocus	0	0.8505141146731063			
[mm] SIM translation stage pos	-233.592463	250.466033080201			
[mm] SIM translation stage offset	0	-0.01005468664627074			
[s] Observation start time (MET)	179829255.475955	179829254.45123			
Observation start date	2003-09-13T08:34:15	2003-09-13T08:34:14			
[s] Observation end time (MET)	179850565.226869	179850564.20215			
Observation end date	2003-09-13T14:29:25	2003-09-13T14:29:24			
Read mode	TIMED	TIMED			

## **2.3 Star Slots**

## **2.4 FID Slots**

## **A Summary**

### **A.1 Status**

V&V Scientist	Jen Lauer
V&V Date (YYYY-MM-DD)	2012.12.06
V&V Edition	1
V&V Disposition and Status	OK
V&V Charge Time	8.3803792864978

### **A.2 Comments**