

V&V Reference Report

L2 ASCDS Version : 8.4.5

Observation 60553 - L2 Version 3
Chandra X-Ray Center

L2 Processing Date : Nov 4 2012

Contents

1	Front	2
2	OBI	3
2.1	OBI	3
2.1.1	Images	3
2.1.2	Bias	3
2.1.3	Parameters	4
2.1.4	Events	4
2.2	Compared Parameters	5
2.3	Star Slots	6
2.4	FID Slots	6
A	Summary	7
A.1	Status	7
A.2	Comments	7

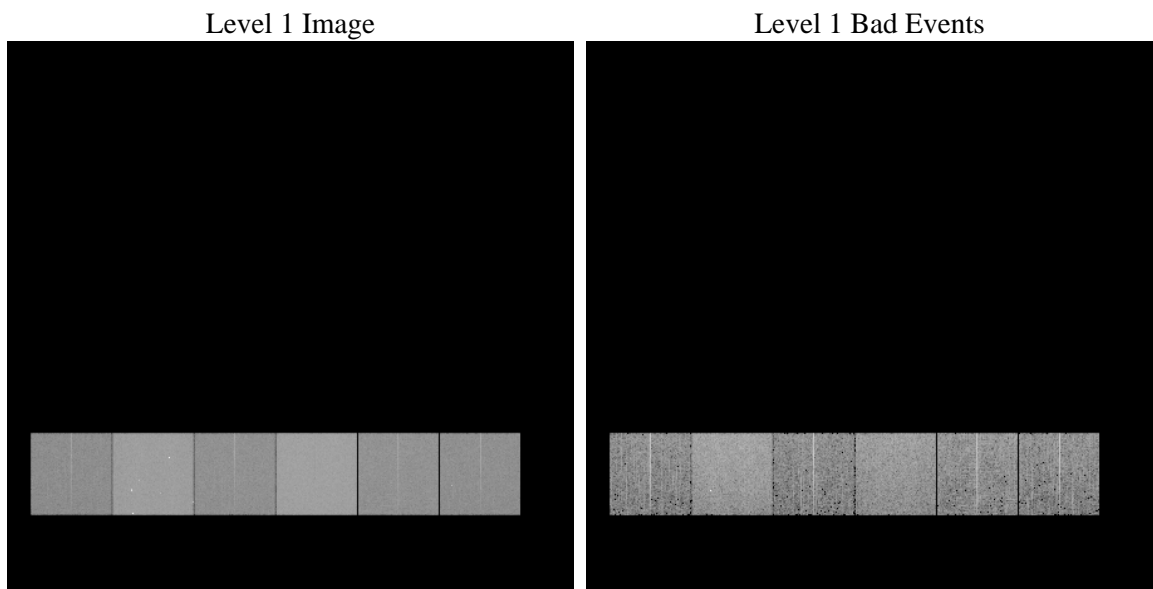
1 Front

seq_num	 	Sequence number
obs_id	60553	Observation id
title	ACIS-456789 diagnostics	Proposal title
observer	CHANDRA engineering request/realtime commanding	Principal investig
object	 	Source name
dtcycle	0	
cycle	P	events from which exps? Prim/Second/Both
ra_targ	0.0	Observer's specified target RA [deg]
dec_targ	0.0	Observer's specified target Dec [deg]
ra_nom	129.00270000484	Nominal RA [deg]
dec_nom	50.028571876397	Nominal Dec [deg]
roll_nom	53.645791814234	Nominal Roll [deg]
revision	3	Processing version of data
ontime	8463.9999684691	Sum of GTIs [s]
livetime	8356.8237044595	Livetime [s]
ontime4	4409.8487587869	Sum of GTIs [s]
ontime5	8463.9999684691	Sum of GTIs [s]
ontime6	4805.2072827518	Sum of GTIs [s]
ontime7	8463.9999684691	Sum of GTIs [s]
ontime8	4876.5906686187	Sum of GTIs [s]
ontime9	4636.4192595184	Sum of GTIs [s]
l2events	1239666	Number of level 2 events

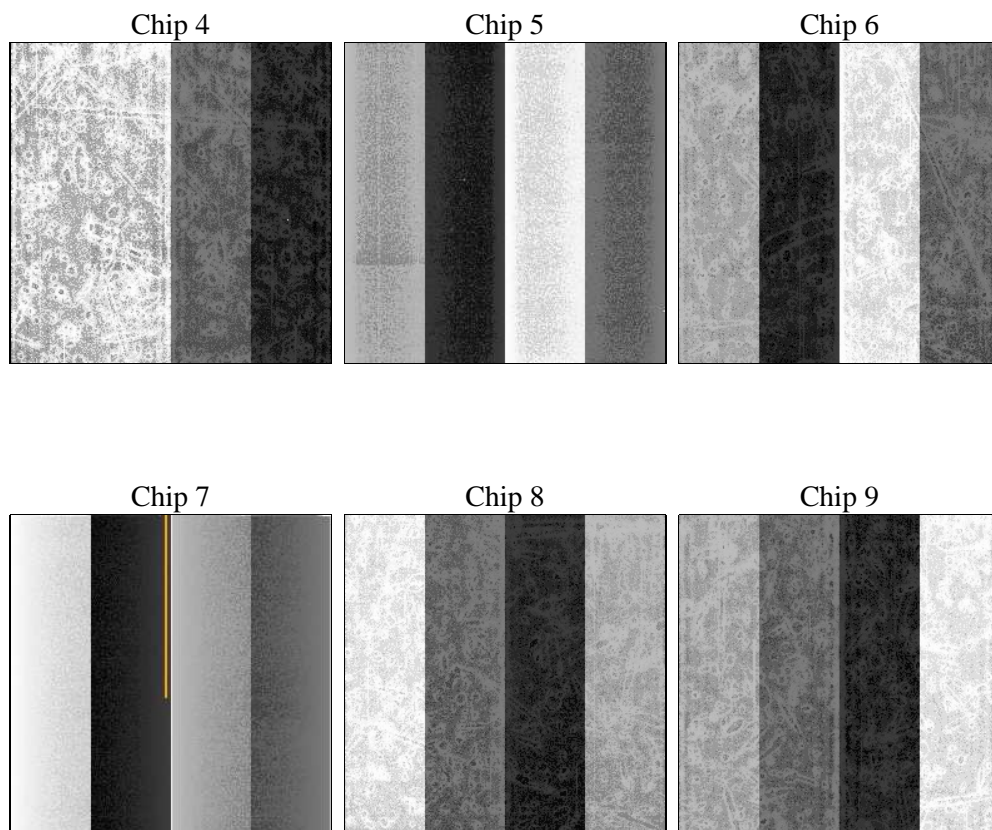
2 OBI

2.1 OBI

2.1.1 Images



2.1.2 Bias



2.1.3 Parameters

obi_num	0	Obi number	sched_exp_time	0.0	[s] Scheduled observation exposure time
ascdsver	8.4.5	Processing system revision	ontime	8463.9999684691	Sum of GTIs [s]
caldbver	4.5.2	 	ontime4	4409.8487587869	Sum of GTIs [s]
date	2012-11-04T03:19:06	Date and time of file creation	ontime5	8463.9999684691	Sum of GTIs [s]
revision	3	Processing version of data	ontime6	4805.2072827518	Sum of GTIs [s]
			ontime7	8463.9999684691	Sum of GTIs [s]
			ontime8	4876.5906686187	Sum of GTIs [s]
			ontime9	4636.4192595184	Sum of GTIs [s]
			l1events	1536632	Number of level 1 events

2.1.4 Events

	ccd 4	ccd 5	ccd 6	ccd 7	ccd 8	ccd 9		ccd 4	ccd 5	ccd 6	ccd 7	ccd 8	ccd 9
level 1 events	186126	344114	212633	369460	223151	201148	grade 0 events	89889	68767	99397	80607	102315	93252
rejected events	31247	54344	30409	44150	36631	32123		48%	19%	46%	21%	45%	46%
rejected %	16%	15%	14%	11%	16%	15%	grade 1 events	605	229	465	225	521	475
								0%	0%	0%	0%	0%	0%
							grade 2 events	24881	104095	31529	71315	32781	28992
								13%	30%	14%	19%	14%	14%
							grade 3 events	10151	17260	11311	32988	11884	10786
								5%	5%	5%	8%	5%	5%
							grade 4 events	10344	17282	11064	31995	11913	10801
								5%	5%	5%	8%	5%	5%
							grade 5 events	1977	9549	2264	8365	2664	2282
								1%	2%	1%	2%	1%	1%
							grade 6 events	19614	82366	28923	108405	27627	25194
								10%	23%	13%	29%	12%	12%
							grade 7 events	28665	44566	27680	35560	33446	29366
								15%	12%	13%	9%	14%	14%

2.2 Compared Parameters

Parameter	Planned	Actual
Instrument	ACIS	ACIS
Detector	ACIS-456789	ACIS-456789
Grating	NONE	NONE
Data mode	FAINT	FAINT
Observation mode	SECONDARY	SECONDARY
[deg] Pointing RA	0	129.0027000048438
[deg] Pointing Dec	0	50.02857187639714
[deg] Pointing Roll	0.0	53.64579181423402
[mm] SIM focus pos	-0.684267	-0.6828225247311905
[mm] SIM defocus	0	0.8505141146731063
[mm] SIM translation stage pos	-190.132523	250.466033080201
[mm] SIM translation stage offset	0	-0.01005468664627074
[s] Observation start time (MET)	180060220.785865	180060219.76114
Observation start date	2003-09-16T00:43:41	2003-09-16T00:43:39
[s] Observation end time (MET)	180082309.536812	180082308.51209
Observation end date	2003-09-16T06:51:50	2003-09-16T06:51:48
Read mode	TIMED	TIMED

Parameter	Planned	Actual
Obspar format version number	7	7
Obspar file type	PREDICTED	ACTUAL
Obspar update status	NONE	UPDATED
On-chip summing requested	N	N
Subarray requested	NONE	NONE
Alternating exposures requested	N	N
[s] Primary exposure time	0.000000	3.2

2.3 Star Slots

2.4 FID Slots

A Summary

A.1 Status

V&V Scientist	Jen Lauer
V&V Date (YYYY-MM-DD)	2012.12.06
V&V Edition	1
V&V Disposition and Status	OK
V&V Charge Time	8.4639999684691

A.2 Comments