

V&V Reference Report

L2 ASCDS Version : 7.6.8

Observation 60553 - L2 Version 001
Chandra X-Ray Center

L2 Processing Date : Jul 5 2006

Contents

1	Front	2
2	OBI	3
2.1	OBI	3
2.1.1	Images	3
2.1.2	Bias	3
2.1.3	Parameters	4
2.1.4	Events	4
2.2	Compared Parameters	5
2.3	Aspect	6
2.4	Star Slots	8
2.5	FID Slots	8
A	Summary	9
A.1	Status	9
A.2	Comments	9

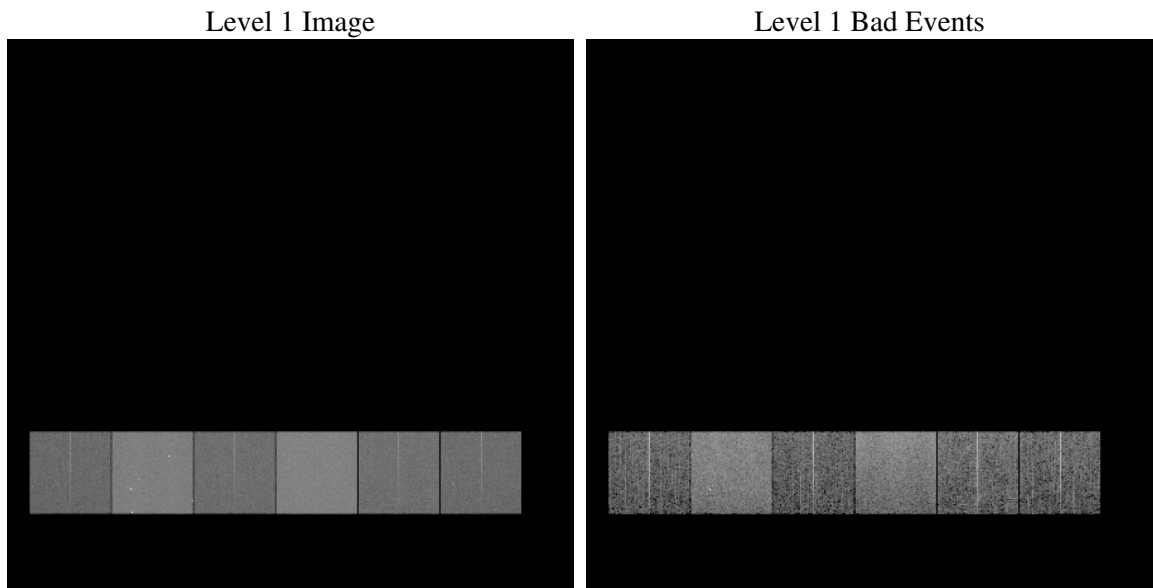
1 Front

seq_num	
obs_id	60553
title	ACIS-456789 diagnostics
observer	CHANDRA engineering request/realtime commanding
object	
dtcycle	0
cycle	P
ra_targ	0.0
dec_targ	0.0
ra_nom	129.00267431628
dec_nom	50.028549501899
roll_nom	53.645811487047
revision	2
ontime	8462.5761474967
livetime	8355.4179127655
ontime4	4408.2487587929
ontime5	8462.6171875
ontime6	4803.6072827578
ontime7	8462.5761474967
ontime8	4874.9906686246
ontime9	4634.9543985426
l2events	1219115

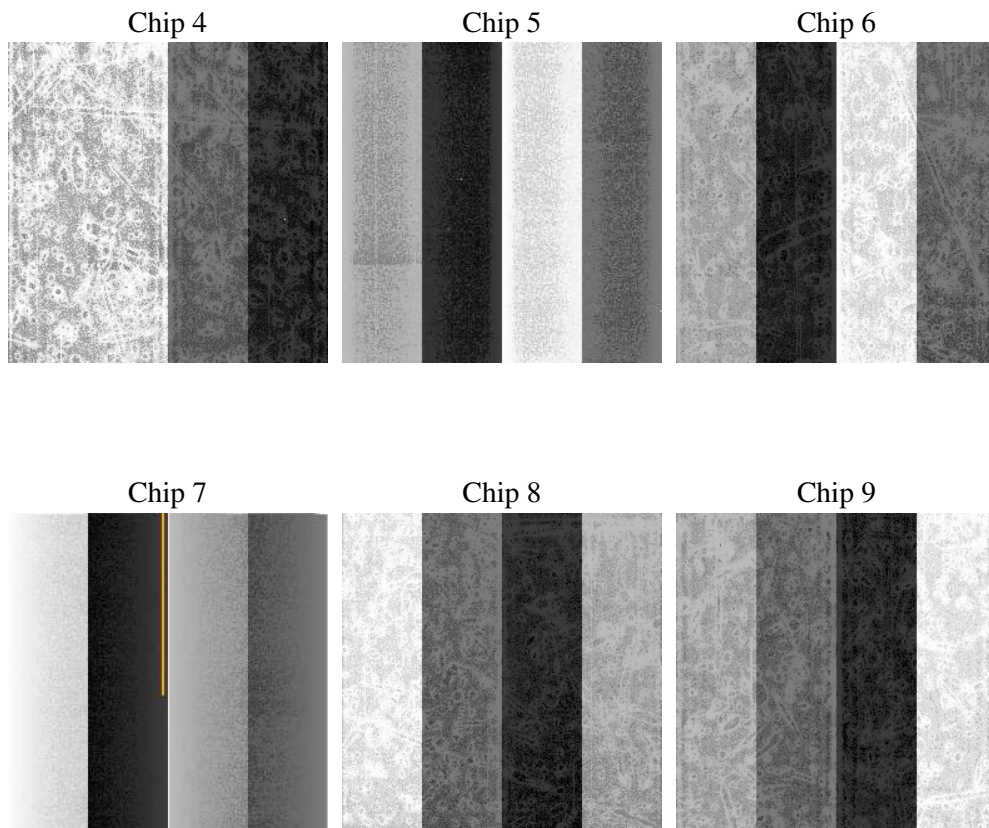
2 OBI

2.1 OBI

2.1.1 Images



2.1.2 Bias



2.1.3 Parameters

obi_num	0
ascdsver	7.6.8
caldbver	3.2.2
date	2006-07-05T10:55:12
revision	2

sched_exp_time	0.0
ontime	8465.4872829616
ontime4	4411.0367742479
ontime5	8465.4872829616
ontime6	4806.4363382161
ontime7	8465.4872829616
ontime8	4877.7376441061
ontime9	4637.9065740108
l1events	1536632

2.1.4 Events

	ccd 4	ccd 5	ccd 6	ccd 7	ccd 8	ccd 9
level 1 events	186126	344114	212633	369460	223151	201148
rejected events	31374	62193	30538	56869	36744	32228
rejected %	16%	18%	14%	15%	16%	16%

	ccd 4	ccd 5	ccd 6	ccd 7	ccd 8	ccd 9
grade 0 events	89889	36245	99398	55535	102315	93252
	48%	10%	46%	15%	45%	46%
grade 1 events	605	137	465	144	521	475
	0%	0%	0%	0%	0%	0%
grade 2 events	24881	132523	31528	94453	32781	28992
	13%	38%	14%	25%	14%	14%
grade 3 events	10151	9050	11311	22989	11884	10786
	5%	2%	5%	6%	5%	5%
grade 4 events	10344	8940	11064	22274	11913	10801
	5%	2%	5%	6%	5%	5%
grade 5 events	1977	6854	2264	7173	2664	2282
	1%	1%	1%	1%	1%	1%
grade 6 events	19614	95284	28923	117474	27627	25194
	10%	27%	13%	31%	12%	12%
grade 7 events	28665	55081	27680	49418	33446	29366
	15%	16%	13%	13%	14%	14%

2.2 Compared Parameters

Parameter	Planned	Actual	Parameter	Planned	Actual
Instrument	ACIS	ACIS	Obspar format version number	6	6
Detector	ACIS-456789	ACIS-456789	Obspar file type	PREDICTED	ACTUAL
Grating	NONE	NONE	Obspar update status	NONE	UPDATED
Data mode	FAINT	FAINT	On-chip summing requested	N	N
Observation mode	SECONDARY	SECONDARY	Subarray requested	NONE	NONE
Pointing RA	0	129.0026743162779	Alternating exposures requested	N	N
Pointing Dec	0	50.02854950189889	Primary exposure time	0.000000	3.2
Pointing Roll	0.0	53.64581148704694			
SIM focus pos (mm)	-0.684267	-0.6828225247311905			
SIM defocus (mm)	0	0.8505141146731063			
SIM translation stage pos (mm)	-190.132523	250.466033080201			
SIM translation stage offset (mm)	0	-0.01005468664627074			
Observation start time	180060220.785865	180060219.76114			
Observation start date	2003-09-16T00:43:41	2003-09-16T00:43:39			
Observation end time	180082309.536812	180082308.51209			
Observation end date	2003-09-16T06:51:50	2003-09-16T06:51:48			
Read mode	TIMED	TIMED			

2.3 Aspect

2.4 Star Slots

2.5 FID Slots

A Summary

A.1 Status

V&V Scientist	Beth Sundheim
V&V Date (YYYY-MM-DD)	2006.07.05
V&V Edition	1
V&V Disposition and Status	OK
V&V Charge Time	8.46257614

A.2 Comments