

V&V Reference Report

L2 ASCDS Version : 8.4.5

Observation 60547 - L2 Version 3
Chandra X-Ray Center

L2 Processing Date : Nov 4 2012

Contents

1	Front	2
2	OBI	3
2.1	OBI	3
2.1.1	Images	3
2.1.2	Bias	3
2.1.3	Parameters	4
2.1.4	Events	4
2.2	Compared Parameters	5
2.3	Star Slots	6
2.4	FID Slots	6
A	Summary	7
A.1	Status	7
A.2	Comments	7

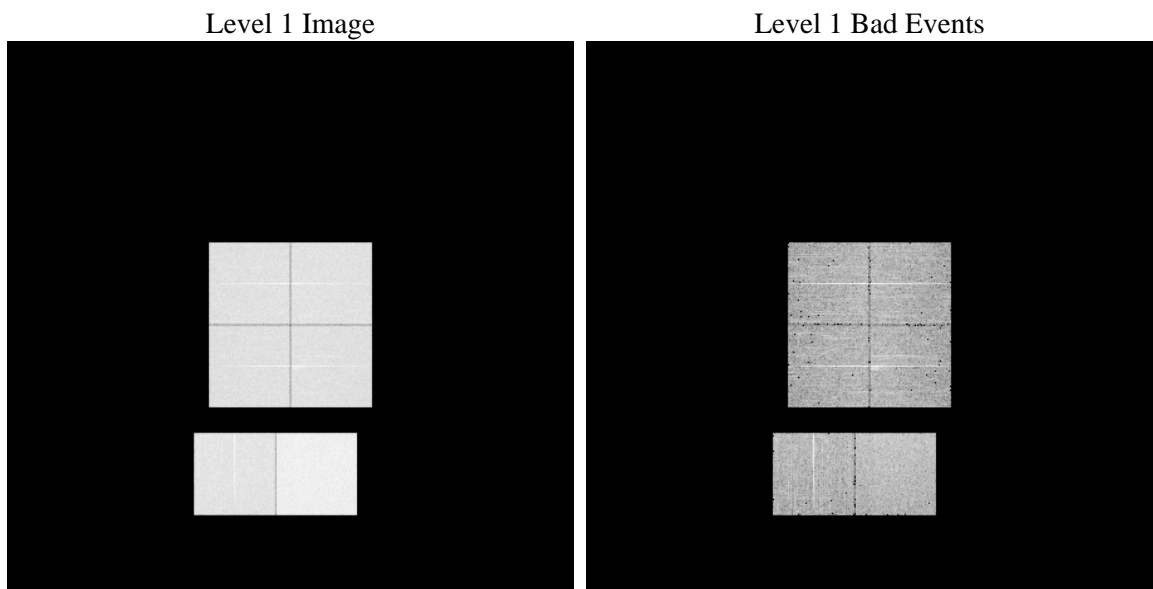
1 Front

seq_num	 	Sequence number
obs_id	60547	Observation id
title	ACIS-012367 diagnostics	Proposal title
observer	CHANDRA engineering request/realtime commanding	Principal investig
object	 	Source name
dtcycle	0	
cycle	P	events from which exps? Prim/Second/Both
ra_targ	0.0	Observer's specified target RA [deg]
dec_targ	0.0	Observer's specified target Dec [deg]
ra_nom	306.03710035458	Nominal RA [deg]
dec_nom	-47.013391964283	Nominal Dec [deg]
roll_nom	299.23700036084	Nominal Roll [deg]
revision	3	Processing version of data
ontime	8399.2480339408	Sum of GTIs [s]
livetime	8292.891697915	Livetime [s]
ontime0	5271.6699502766	Sum of GTIs [s]
ontime1	5503.2514017224	Sum of GTIs [s]
ontime2	5090.0935159326	Sum of GTIs [s]
ontime3	5106.4612415135	Sum of GTIs [s]
ontime6	5652.3361243904	Sum of GTIs [s]
ontime7	8399.2480339408	Sum of GTIs [s]
l2events	1244045	Number of level 2 events

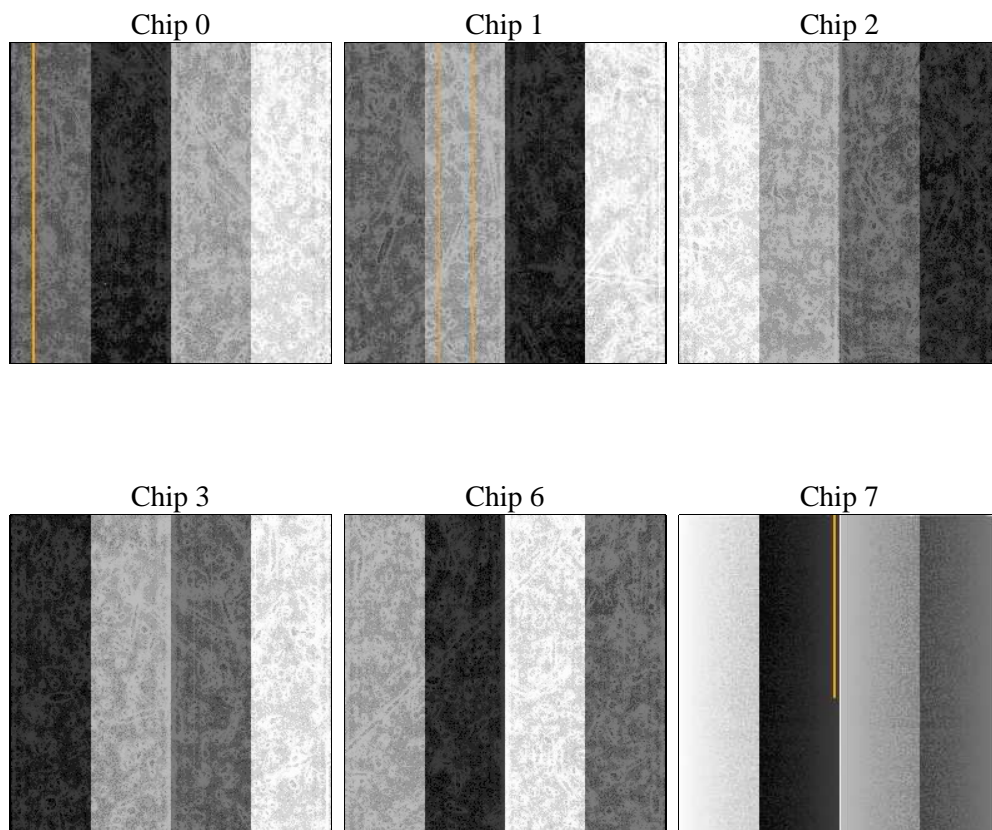
2 OBI

2.1 OBI

2.1.1 Images



2.1.2 Bias



2.1.3 Parameters

obi_num	0	Obi number	sched_exp_time	0.0	[s] Scheduled observation exposure time
ascdsver	8.4.5	Processing system revision	ontime	8399.2480339408	Sum of GTIs [s]
caldsver	4.5.2	 	ontime0	5271.6699502766	Sum of GTIs [s]
date	2012-11-04T12:55:12	Date and time of file creation	ontime1	5503.2514017224	Sum of GTIs [s]
revision	3	Processing version of data	ontime2	5090.0935159326	Sum of GTIs [s]
			ontime3	5106.4612415135	Sum of GTIs [s]
			ontime6	5652.3361243904	Sum of GTIs [s]
			ontime7	8399.2480339408	Sum of GTIs [s]
			l1events	1538483	Number of level 1 events

2.1.4 Events

	ccd 0	ccd 1	ccd 2	ccd 3	ccd 6	ccd 7		ccd 0	ccd 1	ccd 2	ccd 3	ccd 6	ccd 7
level 1 events	228207	236389	221747	224480	255459	372201	grade 0 events	106421	110380	105219	106005	117623	80683
rejected events	36983	37152	35670	36978	40648	47944		46%	46%	47%	47%	46%	21%
rejected %	16%	15%	16%	16%	15%	12%	grade 1 events	587	505	641	631	561	224
								0%	0%	0%	0%	0%	0%
							grade 2 events	33553	35261	31378	32278	36938	71639
								14%	14%	14%	14%	14%	19%
							grade 3 events	12516	12573	12497	12229	13331	32598
								5%	5%	5%	5%	5%	8%
							grade 4 events	12408	12894	12169	12126	13587	32602
								5%	5%	5%	5%	5%	8%
							grade 5 events	2298	2368	2139	2322	2625	8545
								1%	1%	0%	1%	1%	2%
							grade 6 events	27843	29682	26293	26371	34772	109135
								12%	12%	11%	11%	13%	29%
							grade 7 events	32581	32726	31411	32518	36022	36775
								14%	13%	14%	14%	14%	9%

2.2 Compared Parameters

Parameter	Planned	Actual	Parameter	Planned	Actual
Instrument	ACIS	ACIS	Obspar format version number	7	7
Detector	ACIS-012367	ACIS-012367	Obspar file type	PREDICTED	ACTUAL
Grating	NONE	NONE	Obspar update status	NONE	UPDATED
Data mode	FAINT	FAINT	On-chip summing requested	N	N
Observation mode	SECONDARY	SECONDARY	Subarray requested	NONE	NONE
[deg] Pointing RA	0	306.0371003545781	Alternating exposures requested	N	N
[deg] Pointing Dec	0	-47.01339196428322	[s] Primary exposure time	0.000000	3.2
[deg] Pointing Roll	0.0	299.2370003608377			
[mm] SIM focus pos	-0.782348	-0.7809083437167272			
[mm] SIM defocus	0	0.7524282956875696			
[mm] SIM translation stage pos	-233.592463	250.466033080201			
[mm] SIM translation stage offset	0	-0.01005468664627074			
[s] Observation start time (MET)	180514082.605331	180514081.58061			
Observation start date	2003-09-21T06:48:03	2003-09-21T06:48:01			
[s] Observation end time (MET)	180536644.9063	180536643.88157			
Observation end date	2003-09-21T13:04:05	2003-09-21T13:04:03			
Read mode	TIMED	TIMED			

2.3 Star Slots

2.4 FID Slots

A Summary

A.1 Status

V&V Scientist	Jen Lauer
V&V Date (YYYY-MM-DD)	2012.12.06
V&V Edition	1
V&V Disposition and Status	OK
V&V Charge Time	8.3992480339408

A.2 Comments