

V&V Reference Report

L2 ASCDS Version : 8.4.5

Observation 60542 - L2 Version 3
Chandra X-Ray Center

L2 Processing Date : Nov 4 2012

Contents

1	Front	2
2	OBI	3
2.1	OBI	3
2.1.1	Images	3
2.1.2	Bias	3
2.1.3	Parameters	4
2.1.4	Events	4
2.2	Compared Parameters	5
2.3	Star Slots	6
2.4	FID Slots	6
A	Summary	7
A.1	Status	7
A.2	Comments	7

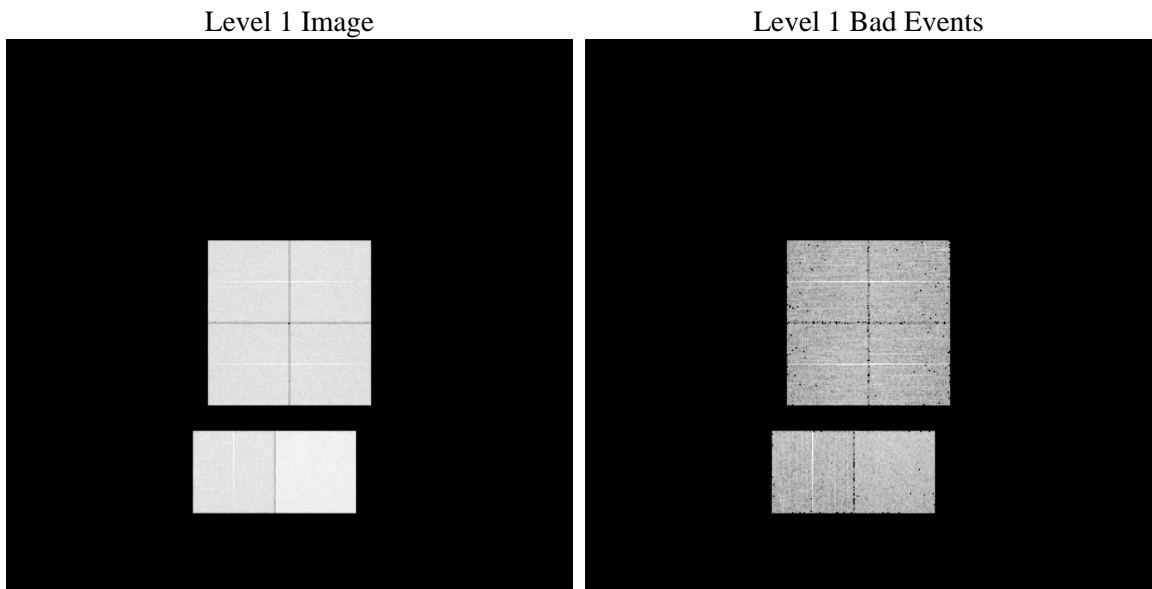
1 Front

seq_num	 	Sequence number
obs_id	60542	Observation id
title	ACIS-012367 diagnostics	Proposal title
observer	CHANDRA engineering request/realtime commanding	Principal investig
object	 	Source name
dtcycle	0	
cycle	P	events from which exps? Prim/Second/Both
ra_targ	0.0	Observer's specified target RA [deg]
dec_targ	0.0	Observer's specified target Dec [deg]
ra_nom	130.3982344655	Nominal RA [deg]
dec_nom	48.128599097317	Nominal Dec [deg]
roll_nom	59.478224360491	Nominal Roll [deg]
revision	3	Processing version of data
ontime	8460.7999684811	Sum of GTIs [s]
livetime	8353.664224798	Livetime [s]
ontime0	5255.7038402557	Sum of GTIs [s]
ontime1	5339.7514433861	Sum of GTIs [s]
ontime2	5083.7148442864	Sum of GTIs [s]
ontime3	5051.4408933818	Sum of GTIs [s]
ontime6	5495.6597741544	Sum of GTIs [s]
ontime7	8460.7999684811	Sum of GTIs [s]
l2events	1253139	Number of level 2 events

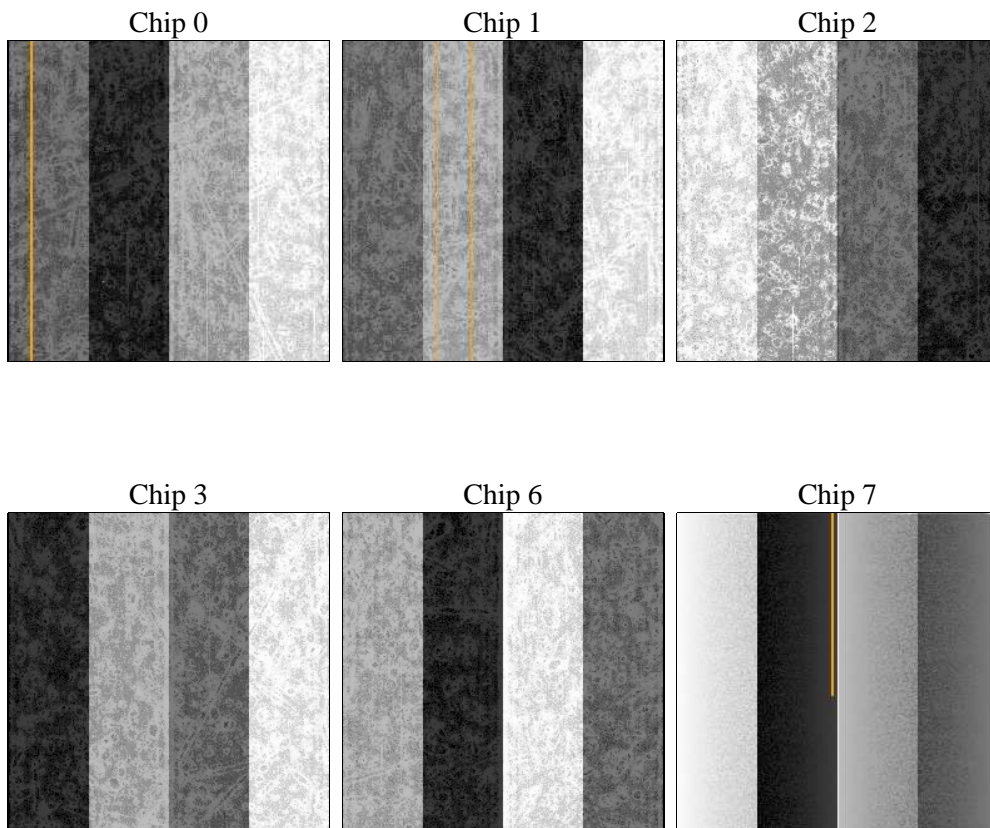
2 OBI

2.1 OBI

2.1.1 Images



2.1.2 Bias



2.1.3 Parameters

obi_num	0	Obi number	sched_exp_time	0.0	[s] Scheduled observation exposure time
ascdsver	8.4.5	Processing system revision	ontime	8460.7999684811	Sum of GTIs [s]
caldbver	4.5.2	 	ontime0	5255.7038402557	Sum of GTIs [s]
date	2012-11-04T17:26:29	Date and time of file creation	ontime1	5339.7514433861	Sum of GTIs [s]
revision	3	Processing version of data	ontime2	5083.7148442864	Sum of GTIs [s]
			ontime3	5051.4408933818	Sum of GTIs [s]
			ontime6	5495.6597741544	Sum of GTIs [s]
			ontime7	8460.7999684811	Sum of GTIs [s]
			l1events	1538495	Number of level 1 events

2.1.4 Events

	ccd 0	ccd 1	ccd 2	ccd 3	ccd 6	ccd 7		ccd 0	ccd 1	ccd 2	ccd 3	ccd 6	ccd 7
level 1 events	227882	232513	224143	224187	250755	379015	grade 0 events	106308	107929	105390	105085	115025	82342
rejected events	34155	35385	35544	36247	38518	46586		46%	46%	47%	46%	45%	21%
rejected %	14%	15%	15%	16%	15%	12%	grade 1 events	589	521	633	645	530	228
								0%	0%	0%	0%	0%	0%
							grade 2 events	33905	34693	31784	32075	36557	72608
								14%	14%	14%	14%	14%	19%
							grade 3 events	12545	12510	12539	12347	13283	33004
								5%	5%	5%	5%	5%	8%
							grade 4 events	12538	12535	12314	12120	13076	33012
								5%	5%	5%	5%	5%	8%
							grade 5 events	2370	2421	2169	2349	2750	8665
								1%	1%	0%	1%	1%	2%
							grade 6 events	28431	29461	26572	26313	34296	111463
								12%	12%	11%	11%	13%	29%
							grade 7 events	31196	32443	32742	33253	35238	37693
								13%	13%	14%	14%	14%	9%

2.2 Compared Parameters

Parameter	Planned	Actual	Parameter	Planned	Actual
Instrument	ACIS	ACIS	Obspar format version number	7	7
Detector	ACIS-012367	ACIS-012367	Obspar file type	PREDICTED	ACTUAL
Grating	NONE	NONE	Obspar update status	NONE	UPDATED
Data mode	FAINT	FAINT	On-chip summing requested	N	N
Observation mode	SECONDARY	SECONDARY	Subarray requested	NONE	NONE
[deg] Pointing RA	0	130.3982344654969	Alternating exposures requested	N	N
[deg] Pointing Dec	0	48.12859909731731	[s] Primary exposure time	0.000000	3.2
[deg] Pointing Roll	0.0	59.47822436049056			
[mm] SIM focus pos	-0.782348	-1.428180813131781			
[mm] SIM defocus	0	0.1051558262725154			
[mm] SIM translation stage pos	-233.592463	250.4635187648994			
[mm] SIM translation stage offset	0	-0.007540371344731511			
[s] Observation start time (MET)	180967807.074785	180967806.05007			
Observation start date	2003-09-26T12:50:07	2003-09-26T12:50:06			
[s] Observation end time (MET)	180992216.425832	180992215.40112			
Observation end date	2003-09-26T19:36:56	2003-09-26T19:36:55			
Read mode	TIMED	TIMED			

2.3 Star Slots

2.4 FID Slots

A Summary

A.1 Status

V&V Scientist	Beth Sundheim
V&V Date (YYYY-MM-DD)	2012.12.07
V&V Edition	1
V&V Disposition and Status	OK
V&V Charge Time	8.4607999684811

A.2 Comments