

# V&V Reference Report

## L2 ASCDS Version : 7.6.8

Observation 60535 - L2 Version 001  
Chandra X-Ray Center

L2 Processing Date : Jul 3 2006

## Contents

<b>1</b>	<b>Front</b>	<b>2</b>
<b>2</b>	<b>OBI</b>	<b>3</b>
2.1	OBI . . . . .	3
2.1.1	Images . . . . .	3
2.1.2	Bias . . . . .	3
2.1.3	Parameters . . . . .	4
2.1.4	Events . . . . .	4
2.2	Compared Parameters . . . . .	5
2.3	Aspect . . . . .	6
2.4	Star Slots . . . . .	8
2.5	FID Slots . . . . .	8
<b>A</b>	<b>Summary</b>	<b>9</b>
A.1	Status . . . . .	9
A.2	Comments . . . . .	9

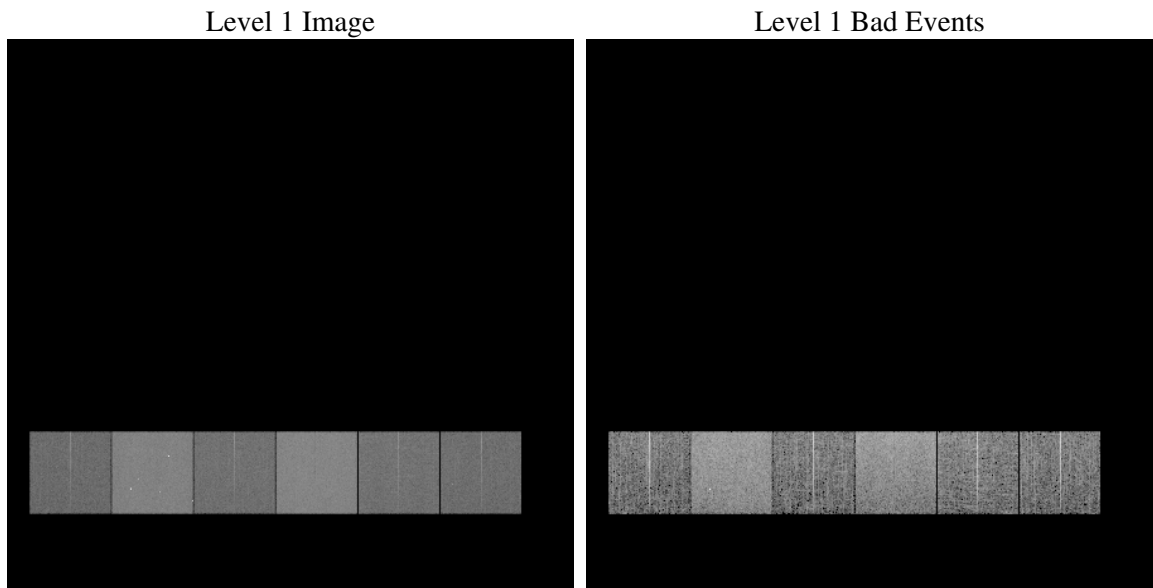
# 1 Front

seq_num	&#160
obs_id	60535
title	ACIS-456789 diagnostics
observer	CHANDRA engineering request/realtime commanding
object	&#160
dtcycle	0
cycle	P
ra_targ	0.0
dec_targ	0.0
ra_nom	8.4263805584554
dec_nom	-26.983722648307
roll_nom	1.8298896137299
revision	2
ontime	8463.5938239694
livetime	8356.4227028059
ontime4	4354.1534931064
ontime5	8463.6348639727
ontime6	4778.682259351
ontime7	8463.5938239694
ontime8	4872.7543899119
ontime9	4580.8599328399
l2events	1208695

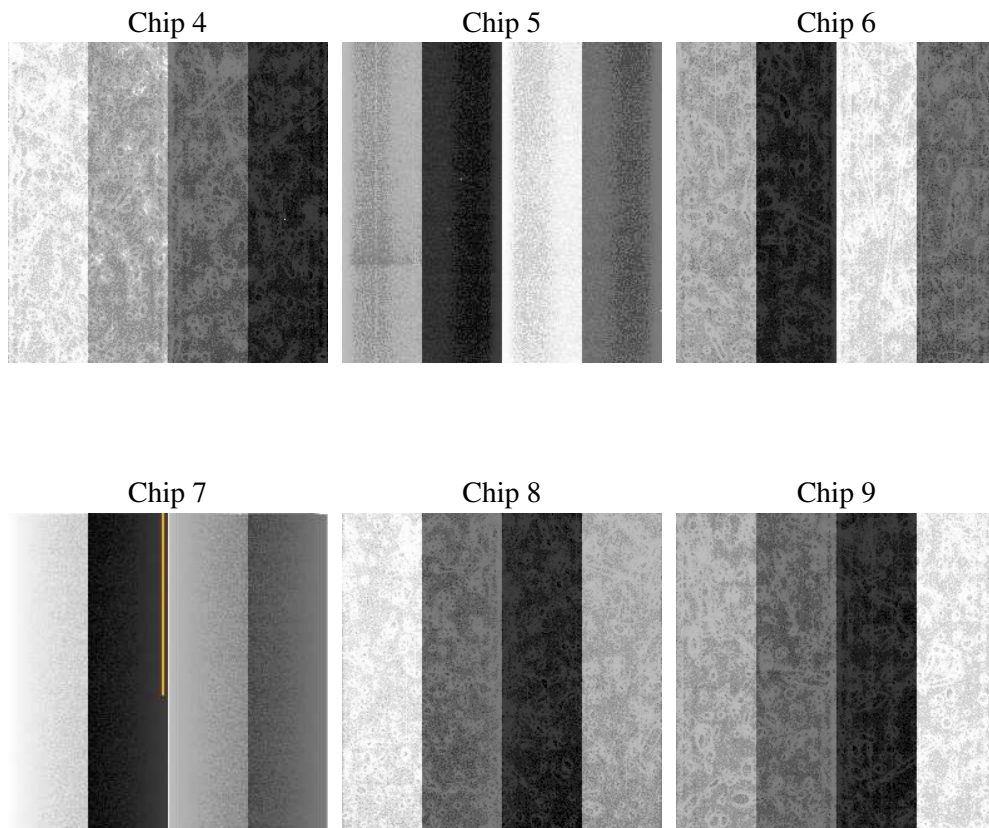
## 2 OBI

### 2.1 OBI

#### 2.1.1 Images



#### 2.1.2 Bias



### 2.1.3 Parameters

obi_num	0
ascdsver	7.6.8
caldbver	3.2.2
date	2006-07-03T05:52:10
revision	2

sched_exp_time	0.0
ontime	8465.5059633851
ontime4	4355.9425125122
ontime5	8465.5059633851
ontime6	4780.5123187602
ontime7	8465.5059633851
ontime8	4874.5023693442
ontime9	4582.8131122589
l1events	1537111

### 2.1.4 Events

	ccd 4	ccd 5	ccd 6	ccd 7	ccd 8	ccd 9
level 1 events	184935	345258	213743	369923	223350	199902
rejected events	33241	64682	34584	58142	38295	34467
rejected %	17%	18%	16%	15%	17%	17%

	ccd 4	ccd 5	ccd 6	ccd 7	ccd 8	ccd 9
grade 0 events	88075	34940	97671	55920	101374	91478
	47%	10%	45%	15%	45%	45%
grade 1 events	612	110	488	143	488	488
	0%	0%	0%	0%	0%	0%
grade 2 events	24403	131810	30936	93735	32601	28435
	13%	38%	14%	25%	14%	14%
grade 3 events	10049	9192	11237	23253	11852	10555
	5%	2%	5%	6%	5%	5%
grade 4 events	10080	9023	11111	22667	11698	10486
	5%	2%	5%	6%	5%	5%
grade 5 events	2102	6767	2424	7405	2729	2445
	1%	1%	1%	2%	1%	1%
grade 6 events	19189	95699	28337	116320	27645	24596
	10%	27%	13%	31%	12%	12%
grade 7 events	30425	57717	31539	50480	34963	31419
	16%	16%	14%	13%	15%	15%

## 2.2 Compared Parameters

Parameter	Planned	Actual	Parameter	Planned	Actual
Instrument	ACIS	ACIS	Obspar format version number	6	6
Detector	ACIS-456789	ACIS-456789	Obspar file type	PREDICTED	ACTUAL
Grating	NONE	NONE	Obspar update status	NONE	UPDATED
Data mode	FAINT	FAINT	On-chip summing requested	N	N
Observation mode	SECONDARY	SECONDARY	Subarray requested	NONE	NONE
Pointing RA	0	8.426380558455396	Alternating exposures requested	N	N
Pointing Dec	0	-26.98372264830695	Primary exposure time	0.000000	3.2
Pointing Roll	0.0	1.829889613729867			
SIM focus pos (mm)	-0.684267	-0.7809083437167272			
SIM defocus (mm)	0	0.7524282956875696			
SIM translation stage pos (mm)	-190.132523	250.466033080201			
SIM translation stage offset (mm)	0	-0.01005468664627074			
Observation start time	181423452.39434	181423451.36963			
Observation start date	2003-10-01T19:24:12	2003-10-01T19:24:11			
Observation end time	181452910.895605	181452909.87089			
Observation end date	2003-10-02T03:35:11	2003-10-02T03:35:09			
Read mode	TIMED	TIMED			

## 2.3 Aspect



## **2.4 Star Slots**

## **2.5 FID Slots**



## A Summary

### A.1 Status

V&V Scientist	Beth Sundheim
V&V Date (YYYY-MM-DD)	2006.07.03
V&V Edition	1
V&V Disposition and Status	OK
V&V Charge Time	8.46359382

### A.2 Comments