

V&V Reference Report

L2 ASCDS Version : 7.6.8

Observation 60532 - L2 Version 001
Chandra X-Ray Center

L2 Processing Date : Jul 1 2006

Contents

1	Front	2
2	OBI	3
2.1	OBI	3
2.1.1	Images	3
2.1.2	Bias	3
2.1.3	Parameters	4
2.1.4	Events	4
2.2	Compared Parameters	5
2.3	Aspect	6
2.4	Star Slots	8
2.5	FID Slots	8
A	Summary	9
A.1	Status	9
A.2	Comments	9

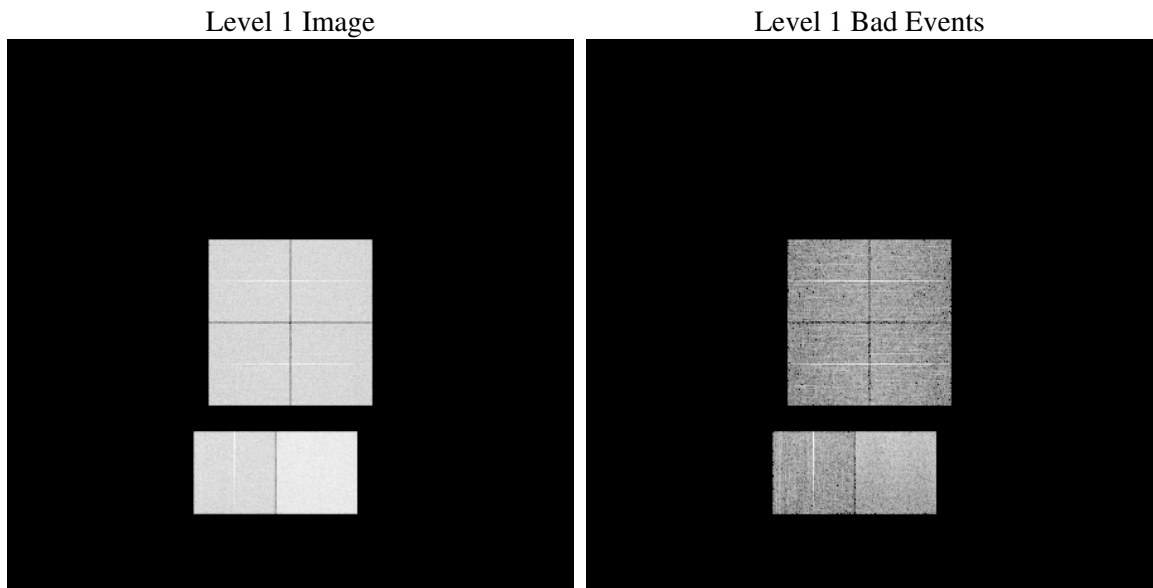
1 Front

seq_num	
obs_id	60532
title	ACIS-012367 diagnostics
observer	CHANDRA engineering request/realtime commanding
object	
dtcycle	0
cycle	P
ra_targ	0.0
dec_targ	0.0
ra_nom	319.04105040681
dec_nom	-50.011033672072
roll_nom	304.47035404077
revision	2
ontime	8425.5999686122
livetime	8318.9099485224
ontime0	5378.1866987944
ontime1	5449.5286756158
ontime2	5174.0863265097
ontime3	5173.9218572378
ontime6	5651.3305177391
ontime7	8425.5999686122
l2events	1231516

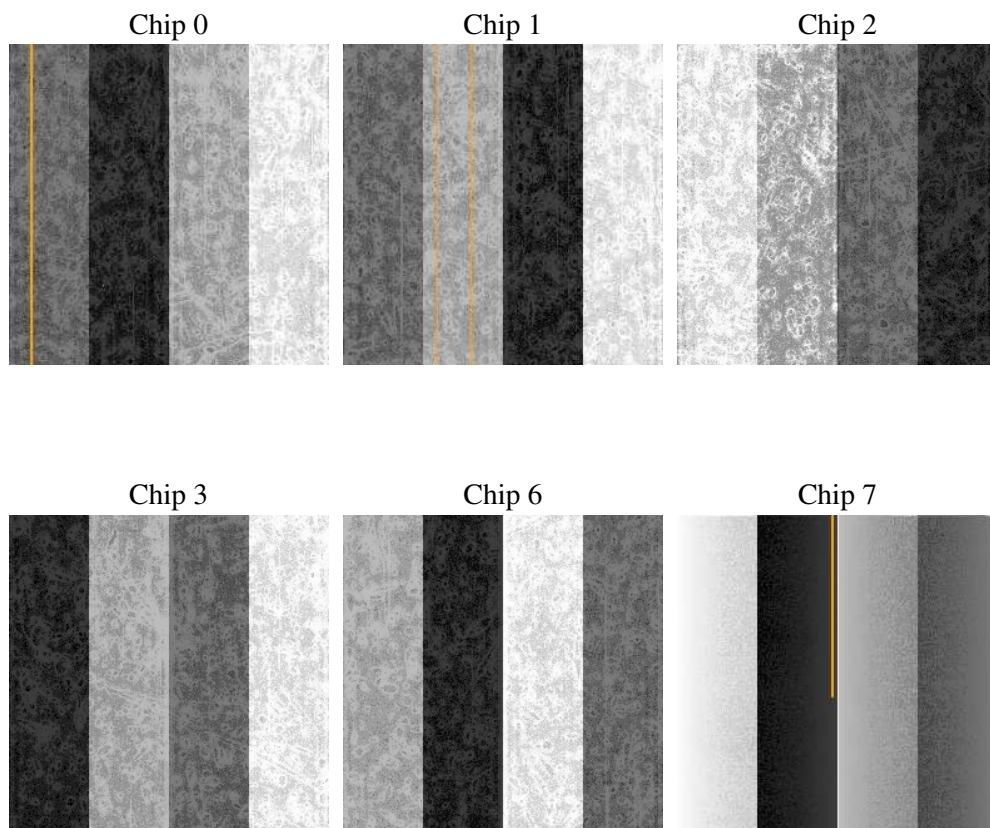
2 OBI

2.1 OBI

2.1.1 Images



2.1.2 Bias



2.1.3 Parameters

obi_num	0
ascdsver	7.6.8
caldbver	3.2.2
date	2006-07-02T01:52:13
revision	2

sched_exp_time	0.0
ontime	8465.4980834723
ontime0	5402.7818809152
ontime1	5467.6008274257
ontime2	5195.3584683239
ontime3	5198.5991791487
ontime6	5675.0237314403
ontime7	8465.4980834723
l1events	1537988

2.1.4 Events

	ccd 0	ccd 1	ccd 2	ccd 3	ccd 6	ccd 7
level 1 events	230575	232538	223976	226597	252944	371358
rejected events	36815	36226	35937	38032	39934	60477
rejected %	15%	15%	16%	16%	15%	16%

	ccd 0	ccd 1	ccd 2	ccd 3	ccd 6	ccd 7
grade 0 events	107399	108133	105473	106340	116709	54817
	46%	46%	47%	46%	46%	14%
grade 1 events	593	539	639	641	574	139
	0%	0%	0%	0%	0%	0%
grade 2 events	33793	34817	32323	32286	36399	94911
	14%	14%	14%	14%	14%	25%
grade 3 events	12551	12486	12238	12210	13152	22448
	5%	5%	5%	5%	5%	6%
grade 4 events	12461	12518	12426	12251	13371	22338
	5%	5%	5%	5%	5%	6%
grade 5 events	2396	2420	2263	2517	2724	7285
	1%	1%	1%	1%	1%	1%
grade 6 events	28446	29053	26440	26396	34462	117948
	12%	12%	11%	11%	13%	31%
grade 7 events	32936	32572	32174	33956	35553	51472
	14%	14%	14%	14%	14%	13%

2.2 Compared Parameters

Parameter	Planned	Actual	Parameter	Planned	Actual
Instrument	ACIS	ACIS	Obspar format version number	6	6
Detector	ACIS-012367	ACIS-012367	Obspar file type	PREDICTED	ACTUAL
Grating	NONE	NONE	Obspar update status	NONE	UPDATED
Data mode	FAINT	FAINT	On-chip summing requested	N	N
Observation mode	SECONDARY	SECONDARY	Subarray requested	NONE	NONE
Pointing RA	0	319.0410504068091	Alternating exposures requested	N	N
Pointing Dec	0	-50.0110336720721	Primary exposure time	0.000000	3.2
Pointing Roll	0.0	304.4703540407692			
SIM focus pos (mm)	-0.782348	-0.6828225247311905			
SIM defocus (mm)	0	0.8505141146731063			
SIM translation stage pos (mm)	-233.592463	250.466033080201			
SIM translation stage offset (mm)	0	-0.01005468664627074			
Observation start time	181651287.354137	181651286.32941			
Observation start date	2003-10-04T10:41:27	2003-10-04T10:41:26			
Observation end time	181677219.855251	181677218.83053			
Observation end date	2003-10-04T17:53:40	2003-10-04T17:53:38			
Read mode	TIMED	TIMED			

2.3 Aspect

2.4 Star Slots

2.5 FID Slots

A Summary

A.1 Status

V&V Scientist	Doug Morgan
V&V Date (YYYY-MM-DD)	2006.07.02
V&V Edition	1
V&V Disposition and Status	OK
V&V Charge Time	8.42559996

A.2 Comments