

V&V Reference Report

L2 ASCDS Version : 7.6.8

Observation 60529 - L2 Version 001
Chandra X-Ray Center

L2 Processing Date : Jul 1 2006

Contents

1	Front	2
2	OBI	3
2.1	OBI	3
2.1.1	Images	3
2.1.2	Bias	3
2.1.3	Parameters	4
2.1.4	Events	4
2.2	Compared Parameters	5
2.3	Aspect	6
2.4	Star Slots	8
2.5	FID Slots	8
A	Summary	9
A.1	Status	9
A.2	Comments	9

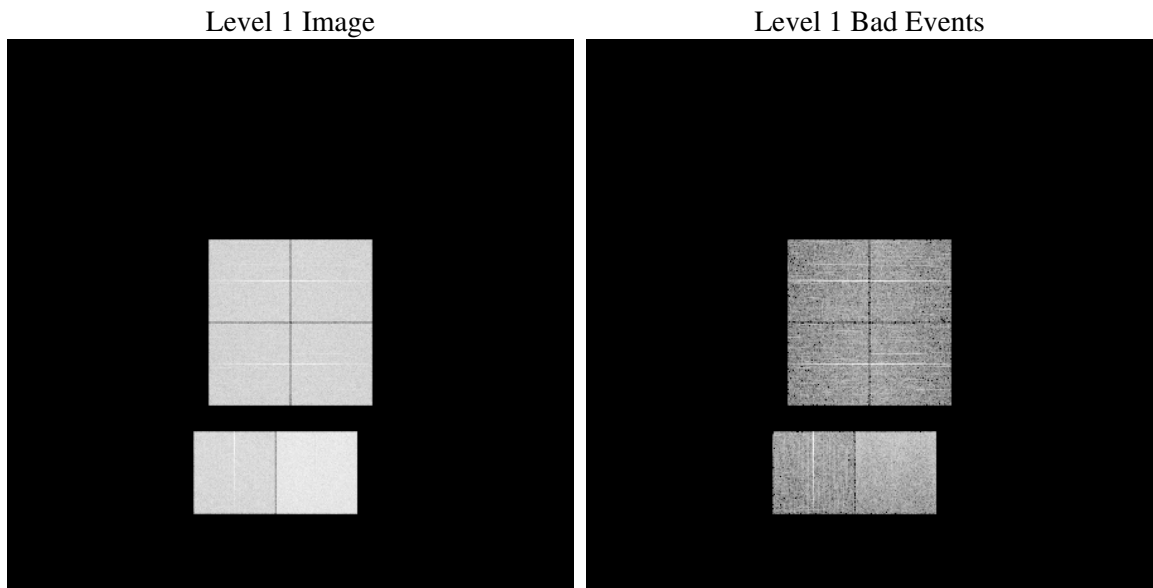
1 Front

seq_num	
obs_id	60529
title	ACIS-012367 diagnostics
observer	CHANDRA engineering request/realtime commanding
object	
dtcycle	0
cycle	P
ra_targ	0.0
dec_targ	0.0
ra_nom	166.01906403864
dec_nom	49.025713465191
roll_nom	31.142416695249
revision	2
ontime	8461.6760763526
livetime	8354.5292388642
ontime0	5363.3574812114
ontime1	5349.4345755577
ontime2	5145.2542185485
ontime3	5311.4203664362
ontime6	5654.0856879652
ontime7	8461.6760763526
l2events	1245205

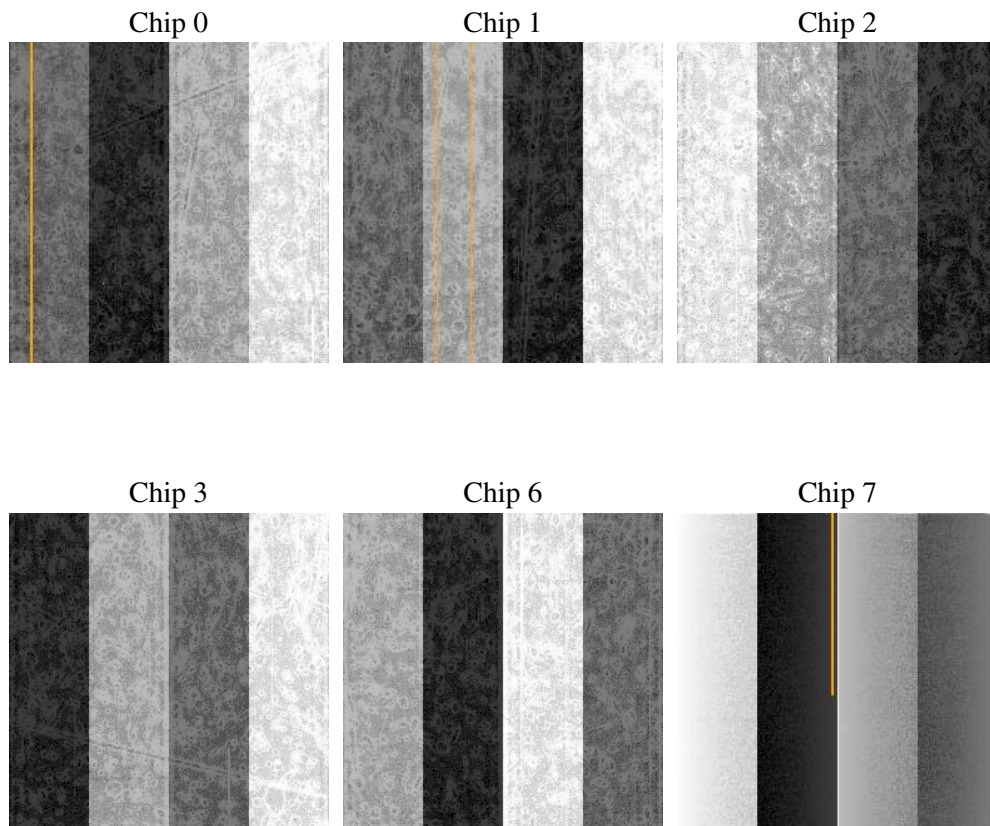
2 OBI

2.1 OBI

2.1.1 Images



2.1.2 Bias



2.1.3 Parameters

obi_num	0
ascdsver	7.6.8
caldbver	3.2.2
date	2006-07-02T02:18:22
revision	2

sched_exp_time	0.0
ontime	8462.2457835376
ontime0	5363.8861483932
ontime1	5350.9213808179
ontime2	5146.7410238087
ontime3	5312.0311136246
ontime6	5655.5724932253
ontime7	8462.2457835376
l1events	1538364

2.1.4 Events

	ccd 0	ccd 1	ccd 2	ccd 3	ccd 6	ccd 7
level 1 events	228774	230679	222906	230669	254254	371082
rejected events	33908	35128	33757	35108	38314	57903
rejected %	14%	15%	15%	15%	15%	15%

	ccd 0	ccd 1	ccd 2	ccd 3	ccd 6	ccd 7
grade 0 events	107446	107106	106575	109564	117157	55299
	46%	46%	47%	47%	46%	14%
grade 1 events	590	552	673	640	536	147
	0%	0%	0%	0%	0%	0%
grade 2 events	34036	34947	31634	33356	37345	95131
	14%	15%	14%	14%	14%	25%
grade 3 events	12651	12321	12139	12672	13318	22714
	5%	5%	5%	5%	5%	6%
grade 4 events	12449	12506	12228	12886	13253	22180
	5%	5%	5%	5%	5%	5%
grade 5 events	2283	2497	2197	2436	2644	7132
	0%	1%	0%	1%	1%	1%
grade 6 events	28284	28671	26573	27083	34867	117855
	12%	12%	11%	11%	13%	31%
grade 7 events	31035	32079	30887	32032	35134	50624
	13%	13%	13%	13%	13%	13%

2.2 Compared Parameters

Parameter	Planned	Actual	Parameter	Planned	Actual
Instrument	ACIS	ACIS	Obspar format version number	6	6
Detector	ACIS-012367	ACIS-012367	Obspar file type	PREDICTED	ACTUAL
Grating	NONE	NONE	Obspar update status	NONE	UPDATED
Data mode	FAINT	FAINT	On-chip summing requested	N	N
Observation mode	SECONDARY	SECONDARY	Subarray requested	NONE	NONE
Pointing RA	0	166.0190640386389	Alternating exposures requested	N	N
Pointing Dec	0	49.02571346519137	Primary exposure time	0.000000	3.2
Pointing Roll	0.0	31.14241669524908			
SIM focus pos (mm)	-0.782348	-0.6828225247311905			
SIM defocus (mm)	0	0.8505141146731063			
SIM translation stage pos (mm)	-233.592463	250.466033080201			
SIM translation stage offset (mm)	0	-0.01005468664627074			
Observation start time	181884804.914174	181884803.88945			
Observation start date	2003-10-07T03:33:25	2003-10-07T03:33:23			
Observation end time	181908359.415187	181908358.39046			
Observation end date	2003-10-07T10:05:59	2003-10-07T10:05:58			
Read mode	TIMED	TIMED			

2.3 Aspect

2.4 Star Slots

2.5 FID Slots

A Summary

A.1 Status

V&V Scientist	Doug Morgan
V&V Date (YYYY-MM-DD)	2006.07.02
V&V Edition	1
V&V Disposition and Status	OK
V&V Charge Time	8.46167607

A.2 Comments