

# V&V Reference Report

## L2 ASCDS Version : 7.6.8

Observation 60526 - L2 Version 001  
Chandra X-Ray Center

L2 Processing Date : Jul 2 2006

## Contents

<b>1</b>	<b>Front</b>	<b>2</b>
<b>2</b>	<b>OBI</b>	<b>3</b>
2.1	OBI . . . . .	3
2.1.1	Images . . . . .	3
2.1.2	Bias . . . . .	3
2.1.3	Parameters . . . . .	4
2.1.4	Events . . . . .	4
2.2	Compared Parameters . . . . .	5
2.3	Aspect . . . . .	6
2.4	Star Slots . . . . .	8
2.5	FID Slots . . . . .	8
<b>A</b>	<b>Summary</b>	<b>9</b>
A.1	Status . . . . .	9
A.2	Comments . . . . .	9

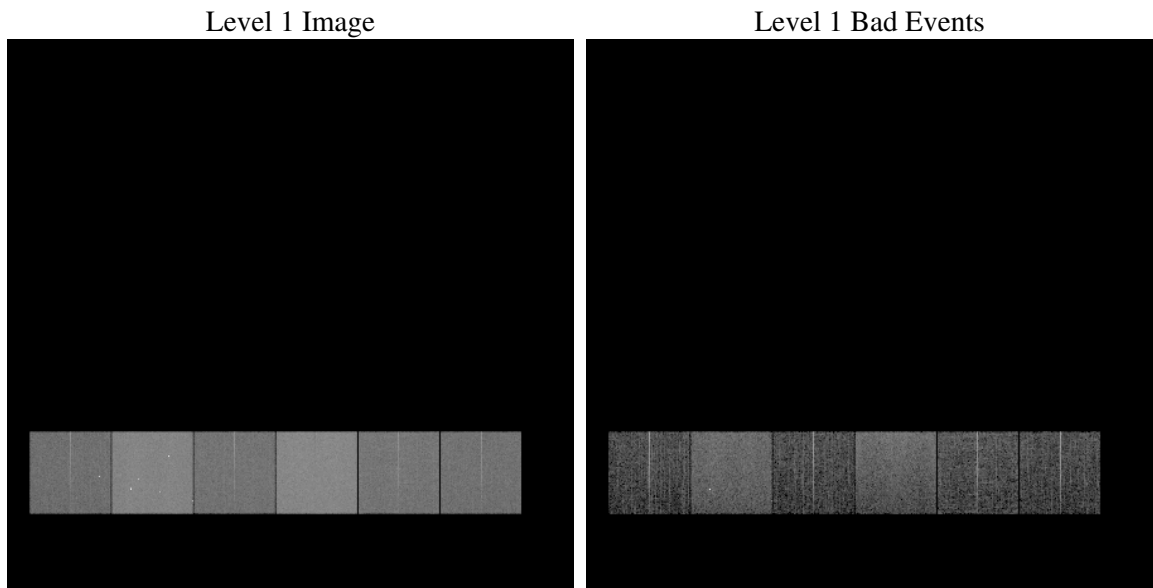
# 1 Front

seq_num	&#160
obs_id	60526
title	ACIS-456789 diagnostics
observer	CHANDRA engineering request/realtime commanding
object	&#160
dtcycle	0
cycle	P
ra_targ	0.0
dec_targ	0.0
ra_nom	277.02801971241
dec_nom	-60.024915329273
roll_nom	266.48784868331
revision	2
ontime	8463.9999684691
livetime	8356.8237044595
ontime4	4488.7497432232
ontime5	8463.9999684691
ontime6	4871.1451148987
ontime7	8463.9999684691
ontime8	4944.3078587651
ontime9	4741.3834942579
l2events	1211533

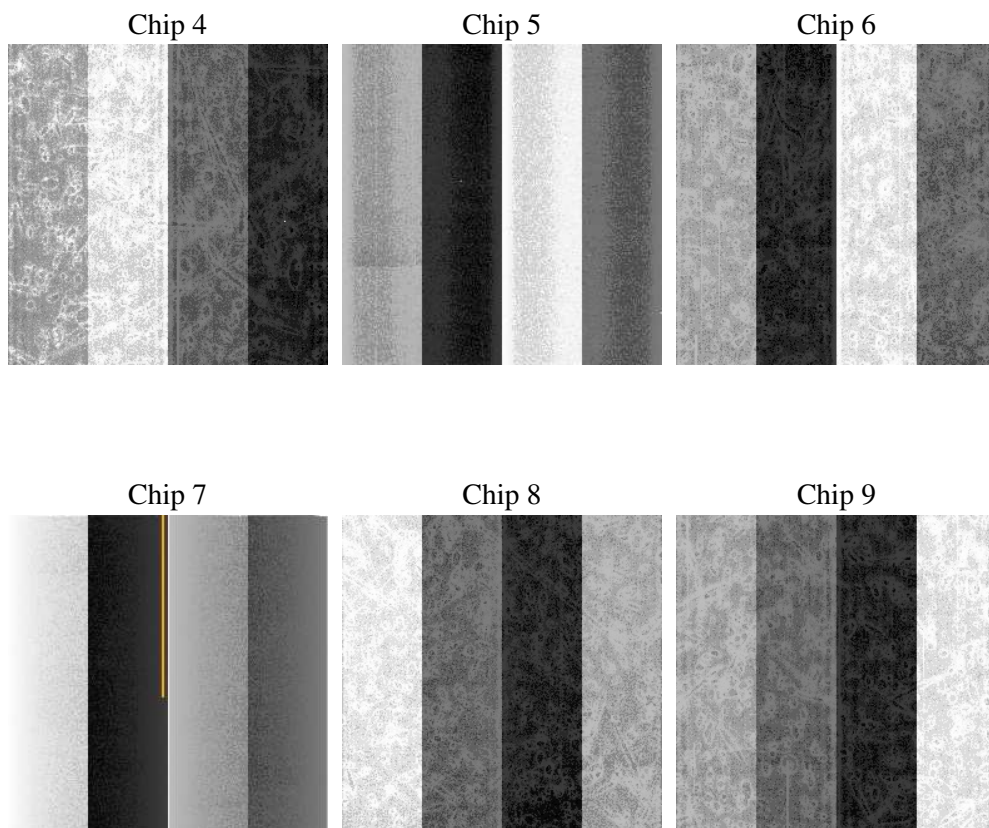
## 2 OBI

### 2.1 OBI

#### 2.1.1 Images



#### 2.1.2 Bias



### 2.1.3 Parameters

obi_num	0
ascdsver	7.6.8
caldbver	3.2.2
date	2006-07-02T03:18:47
revision	2

sched_exp_time	0.0
ontime	8465.4928438067
ontime4	4488.8211302757
ontime5	8465.4928438067
ontime6	4871.2575419545
ontime7	8465.4928438067
ontime8	4945.8007341027
ontime9	4741.6190413237
l1events	1536377

### 2.1.4 Events

	ccd 4	ccd 5	ccd 6	ccd 7	ccd 8	ccd 9
level 1 events	189000	340812	214542	364782	225261	201980
rejected events	33323	64434	32944	57548	37949	32051
rejected %	17%	18%	15%	15%	16%	15%

	ccd 4	ccd 5	ccd 6	ccd 7	ccd 8	ccd 9
grade 0 events	90638	32755	99376	54032	101963	93629
	47%	9%	46%	14%	45%	46%
grade 1 events	625	143	481	108	545	546
	0%	0%	0%	0%	0%	0%
grade 2 events	24712	131094	31319	93176	32974	29155
	13%	38%	14%	25%	14%	14%
grade 3 events	10495	8553	11185	22269	12292	10810
	5%	2%	5%	6%	5%	5%
grade 4 events	10198	8389	11079	21794	12149	11010
	5%	2%	5%	5%	5%	5%
grade 5 events	2072	7034	2276	7168	2725	2407
	1%	2%	1%	1%	1%	1%
grade 6 events	19634	95587	28639	115963	27934	25325
	10%	28%	13%	31%	12%	12%
grade 7 events	30626	57257	30187	50272	34679	29098
	16%	16%	14%	13%	15%	14%

## 2.2 Compared Parameters

Parameter	Planned	Actual	Parameter	Planned	Actual
Instrument	ACIS	ACIS	Obspar format version number	6	6
Detector	ACIS-456789	ACIS-456789	Obspar file type	PREDICTED	ACTUAL
Grating	NONE	NONE	Obspar update status	NONE	UPDATED
Data mode	FAINT	FAINT	On-chip summing requested	N	N
Observation mode	SECONDARY	SECONDARY	Subarray requested	NONE	NONE
Pointing RA	0	277.0280197124086	Alternating exposures requested	N	N
Pointing Dec	0	-60.02491532927252	Primary exposure time	0.000000	3.2
Pointing Roll	0.0	266.4878486833135			
SIM focus pos (mm)	-0.684267	-0.6828225247311905			
SIM defocus (mm)	0	0.8505141146731063			
SIM translation stage pos (mm)	-190.132523	250.466033080201			
SIM translation stage offset (mm)	0	-0.01005468664627074			
Observation start time	182116616.874113	182116615.84941			
Observation start date	2003-10-09T19:56:57	2003-10-09T19:56:55			
Observation end time	182137926.625028	182137925.60033			
Observation end date	2003-10-10T01:52:07	2003-10-10T01:52:05			
Read mode	TIMED	TIMED			

## 2.3 Aspect



## **2.4 Star Slots**

## **2.5 FID Slots**



## A Summary

### A.1 Status

V&V Scientist	Doug Morgan
V&V Date (YYYY-MM-DD)	2006.07.02
V&V Edition	1
V&V Disposition and Status	OK
V&V Charge Time	8.46399996

### A.2 Comments