

# V&V Reference Report

## L2 ASCDS Version : 7.6.8

Observation 60509 - L2 Version 001  
Chandra X-Ray Center

L2 Processing Date : Jul 2 2006

## Contents

<b>1</b>	<b>Front</b>	<b>2</b>
<b>2</b>	<b>OBI</b>	<b>3</b>
2.1	OBI . . . . .	3
2.1.1	Images . . . . .	3
2.1.2	Bias . . . . .	3
2.1.3	Parameters . . . . .	4
2.1.4	Events . . . . .	4
2.2	Compared Parameters . . . . .	5
2.3	Aspect . . . . .	6
2.4	Star Slots . . . . .	8
2.5	FID Slots . . . . .	8
<b>A</b>	<b>Summary</b>	<b>9</b>
A.1	Status . . . . .	9
A.2	Comments . . . . .	9

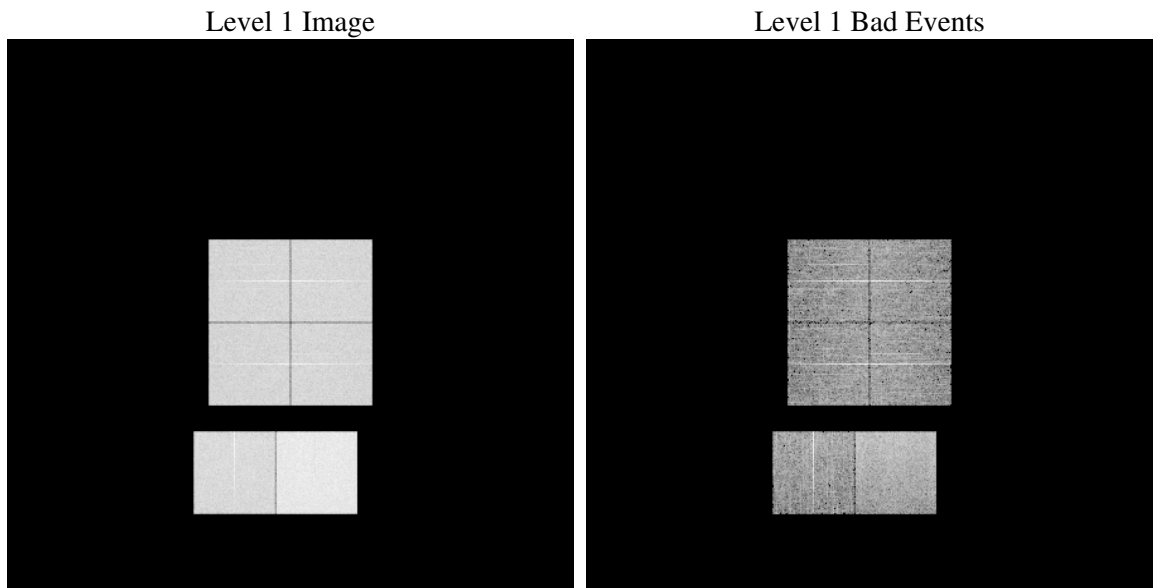
# 1 Front

seq_num	&#160
obs_id	60509
title	ACIS-012367 diagnostics
observer	CHANDRA engineering request/realtime commanding
object	&#160
dtcycle	0
cycle	P
ra_targ	0.0
dec_targ	0.0
ra_nom	88.968698208164
dec_nom	50.720596231537
roll_nom	101.03845912295
revision	2
ontime	8463.9999684691
livetime	8356.8237044595
ontime0	5485.5492320657
ontime1	5595.7415442467
ontime2	5242.8155451119
ontime3	5365.6323652565
ontime6	5767.5143320262
ontime7	8463.9999684691
l2events	1238635

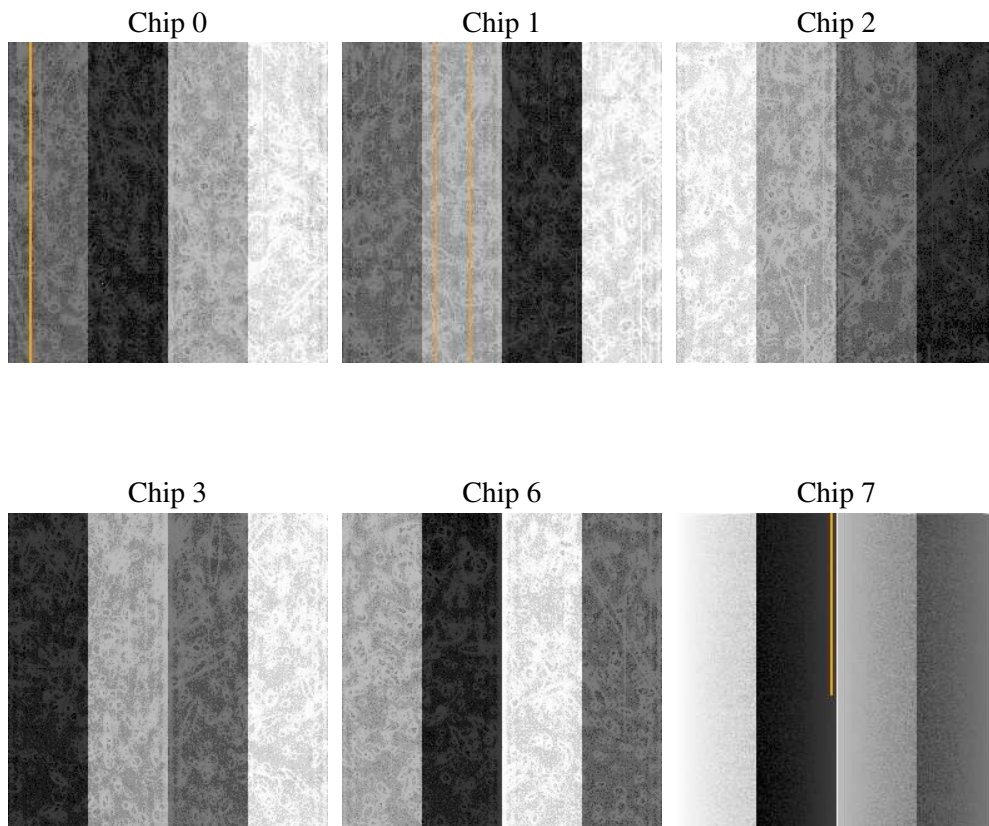
## 2 OBI

### 2.1 OBI

#### 2.1.1 Images



#### 2.1.2 Bias



### 2.1.3 Parameters

obi_num	0
ascdsver	7.6.8
caldbver	3.2.2
date	2006-07-02T03:49:59
revision	2

sched_exp_time	0.0
ontime	8465.4976039231
ontime0	5487.0468675196
ontime1	5597.2391797006
ontime2	5243.9729322791
ontime3	5367.1300007105
ontime6	5769.0119674802
ontime7	8465.4976039231
l1events	1537436

### 2.1.4 Events

	ccd 0	ccd 1	ccd 2	ccd 3	ccd 6	ccd 7
level 1 events	228725	234620	223487	229723	254046	366835
rejected events	34878	35849	34600	36864	38935	58434
rejected %	15%	15%	15%	16%	15%	15%

	ccd 0	ccd 1	ccd 2	ccd 3	ccd 6	ccd 7
grade 0 events	107021	109313	106298	108739	117270	53815
	46%	46%	47%	47%	46%	14%
grade 1 events	582	557	588	565	624	135
	0%	0%	0%	0%	0%	0%
grade 2 events	33802	35160	31639	32873	36956	93912
	14%	14%	14%	14%	14%	25%
grade 3 events	12527	12564	12226	12356	13386	22322
	5%	5%	5%	5%	5%	6%
grade 4 events	12427	12652	12323	12366	13345	21905
	5%	5%	5%	5%	5%	5%
grade 5 events	2372	2471	2229	2440	2723	7024
	1%	1%	0%	1%	1%	1%
grade 6 events	28070	29082	26401	26525	34154	116447
	12%	12%	11%	11%	13%	31%
grade 7 events	31924	32821	31783	33859	35588	51275
	13%	13%	14%	14%	14%	13%

## 2.2 Compared Parameters

Parameter	Planned	Actual	Parameter	Planned	Actual
Instrument	ACIS	ACIS	Obspar format version number	6	6
Detector	ACIS-012367	ACIS-012367	Obspar file type	PREDICTED	ACTUAL
Grating	NONE	NONE	Obspar update status	NONE	UPDATED
Data mode	FAINT	FAINT	On-chip summing requested	N	N
Observation mode	SECONDARY	SECONDARY	Subarray requested	NONE	NONE
Pointing RA	0	88.96869820816438	Alternating exposures requested	N	N
Pointing Dec	0	50.7205962315368	Primary exposure time	0.000000	3.2
Pointing Roll	0.0	101.0384591229467			
SIM focus pos (mm)	-0.782348	-0.6828225247311905			
SIM defocus (mm)	0	0.8505141146731063			
SIM translation stage pos (mm)	-233.592463	250.466033080201			
SIM translation stage offset (mm)	0	-0.01005468664627074			
Observation start time	182569636.143622	182569635.1189			
Observation start date	2003-10-15T01:47:16	2003-10-15T01:47:15			
Observation end time	182594268.944683	182594267.91996			
Observation end date	2003-10-15T08:37:49	2003-10-15T08:37:47			
Read mode	TIMED	TIMED			

## 2.3 Aspect



## **2.4 Star Slots**

## **2.5 FID Slots**



## A Summary

### A.1 Status

V&V Scientist	Doug Morgan
V&V Date (YYYY-MM-DD)	2006.07.02
V&V Edition	1
V&V Disposition and Status	OK
V&V Charge Time	8.46399996

### A.2 Comments