

V&V Reference Report

L2 ASCDS Version : 7.6.8

Observation 60506 - L2 Version 001
Chandra X-Ray Center

L2 Processing Date : Jun 29 2006

Contents

1	Front	2
2	OBI	3
2.1	OBI	3
2.1.1	Images	3
2.1.2	Bias	3
2.1.3	Parameters	4
2.1.4	Events	4
2.2	Compared Parameters	5
2.3	Aspect	6
2.4	Star Slots	8
2.5	FID Slots	8
A	Summary	9
A.1	Status	9
A.2	Comments	9

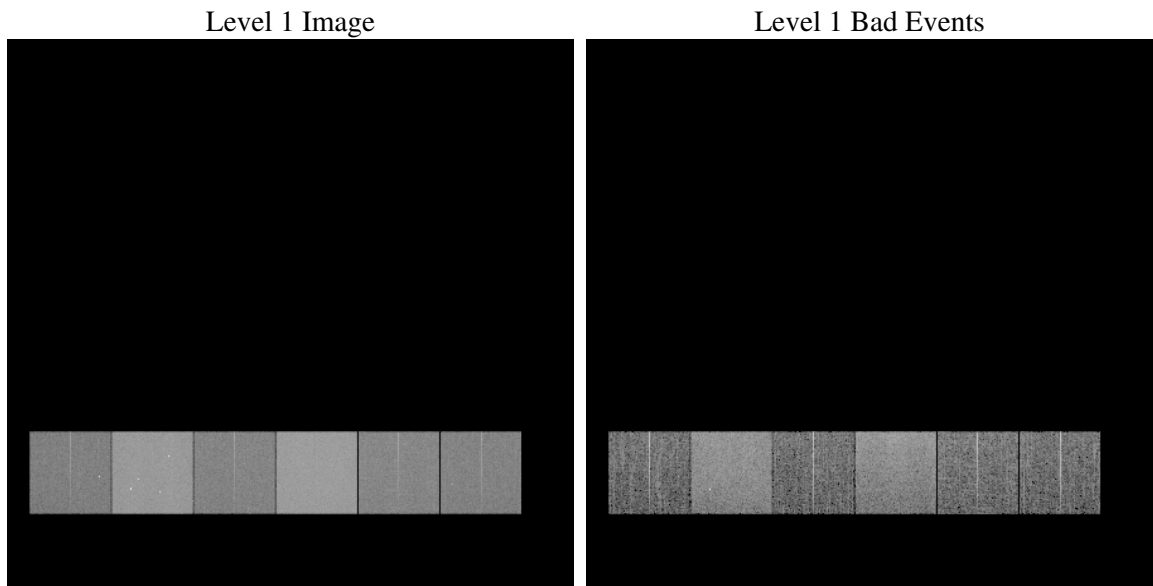
1 Front

seq_num	
obs_id	60506
title	ACIS-456789 diagnostics
observer	CHANDRA engineering request/realtime commanding
object	
dtcycle	0
cycle	P
ra_targ	0.0
dec_targ	0.0
ra_nom	4.3283636936029
dec_nom	-9.1057342655544
roll_nom	315.55963359733
revision	2
ontime	8345.5999689102
livetime	8239.9229569869
ontime4	3863.3213898242
ontime5	8345.5999689102
ontime6	4189.2902196348
ontime7	8345.5999689102
ontime8	4365.6764753163
ontime9	4143.7930476964
l2events	1199637

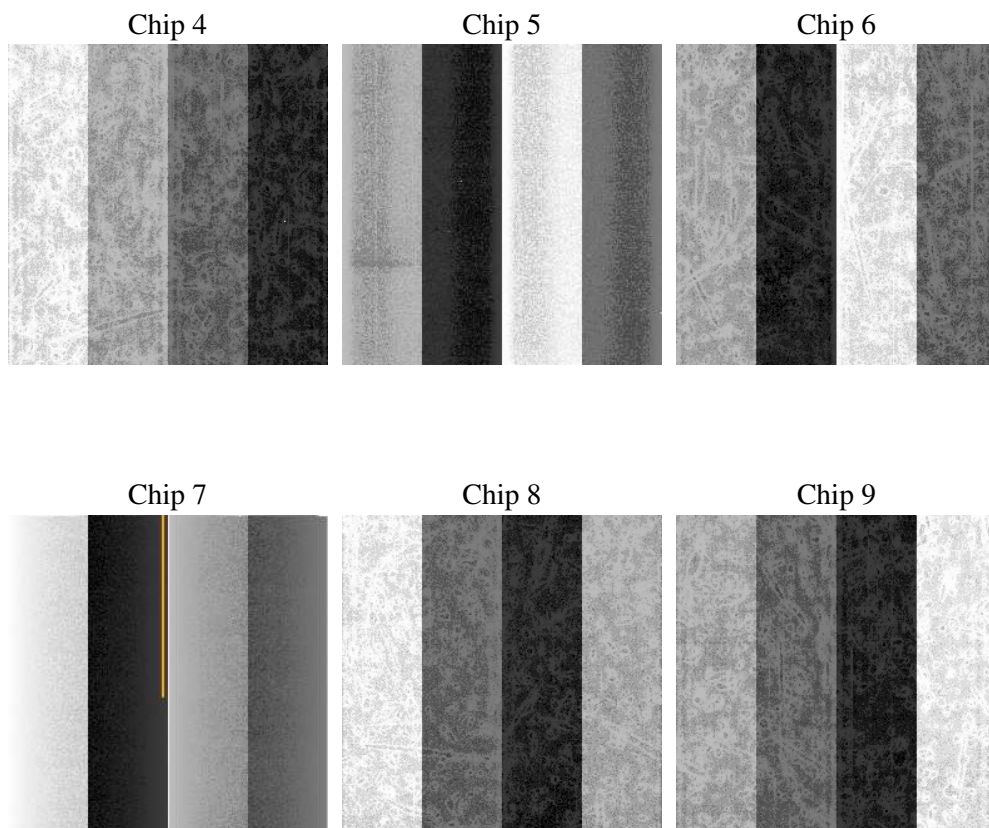
2 OBI

2.1 OBI

2.1.1 Images



2.1.2 Bias



2.1.3 Parameters

obi_num	0
ascdsver	7.6.8
caldbver	3.2.2
date	2006-06-29T17:07:52
revision	2

sched_exp_time	0.0
ontime	8462.2649436891
ontime4	3924.8895907402
ontime5	8462.2649436891
ontime6	4255.4718066752
ontime7	8462.2649436891
ontime8	4430.485756129
ontime9	4210.0977945626
l1events	1538597

2.1.4 Events

	ccd 4	ccd 5	ccd 6	ccd 7	ccd 8	ccd 9
level 1 events	178810	358175	201607	388877	216019	195109
rejected events	34327	69588	34687	64937	38624	34919
rejected %	19%	19%	17%	16%	17%	17%

	ccd 4	ccd 5	ccd 6	ccd 7	ccd 8	ccd 9
grade 0 events	84722	35447	91426	58229	97593	88886
	47%	9%	45%	14%	45%	45%
grade 1 events	644	101	531	157	553	510
	0%	0%	0%	0%	0%	0%
grade 2 events	23158	138100	28954	99896	31084	27666
	12%	38%	14%	25%	14%	14%
grade 3 events	9728	9401	10365	23832	11459	10366
	5%	2%	5%	6%	5%	5%
grade 4 events	9709	9393	10482	23023	11579	10367
	5%	2%	5%	5%	5%	5%
grade 5 events	1948	6822	2182	7510	2536	2226
	1%	1%	1%	1%	1%	1%
grade 6 events	19338	99994	28122	123255	28154	25266
	10%	27%	13%	31%	13%	12%
grade 7 events	29563	58917	29545	52975	33061	29822
	16%	16%	14%	13%	15%	15%

2.2 Compared Parameters

Parameter	Planned	Actual	Parameter	Planned	Actual
Instrument	ACIS	ACIS	Obspar format version number	6	6
Detector	ACIS-456789	ACIS-456789	Obspar file type	PREDICTED	ACTUAL
Grating	NONE	NONE	Obspar update status	NONE	UPDATED
Data mode	FAINT	FAINT	On-chip summing requested	N	N
Observation mode	SECONDARY	SECONDARY	Subarray requested	NONE	NONE
Pointing RA	0	4.328363693602943	Alternating exposures requested	N	N
Pointing Dec	0	-9.105734265554378	Primary exposure time	0.000000	3.2
Pointing Roll	0.0	315.5596335973293			
SIM focus pos (mm)	-0.684267	-0.6828225247311905			
SIM defocus (mm)	0	0.8505141146731063			
SIM translation stage pos (mm)	-190.132523	250.466033080201			
SIM translation stage offset (mm)	0	-0.01005468664627074			
Observation start time	182799051.653496	182799050.62876			
Observation start date	2003-10-17T17:30:52	2003-10-17T17:30:50			
Observation end time	182822997.704541	182822996.67979			
Observation end date	2003-10-18T00:09:58	2003-10-18T00:09:56			
Read mode	TIMED	TIMED			

2.3 Aspect

2.4 Star Slots

2.5 FID Slots

A Summary

A.1 Status

V&V Scientist	Beth Sundheim
V&V Date (YYYY-MM-DD)	2006.06.29
V&V Edition	1
V&V Disposition and Status	OK
V&V Charge Time	8.34559996

A.2 Comments