

V&V Reference Report

L2 ASCDS Version : 8.4.5

Observation 60493 - L2 Version 3
Chandra X-Ray Center

L2 Processing Date : Nov 7 2012

Contents

1	Front	2
2	OBI	3
2.1	OBI	3
2.1.1	Images	3
2.1.2	Bias	3
2.1.3	Parameters	4
2.1.4	Events	4
2.2	Compared Parameters	5
2.3	Star Slots	6
2.4	FID Slots	6
A	Summary	7
A.1	Status	7
A.2	Comments	7

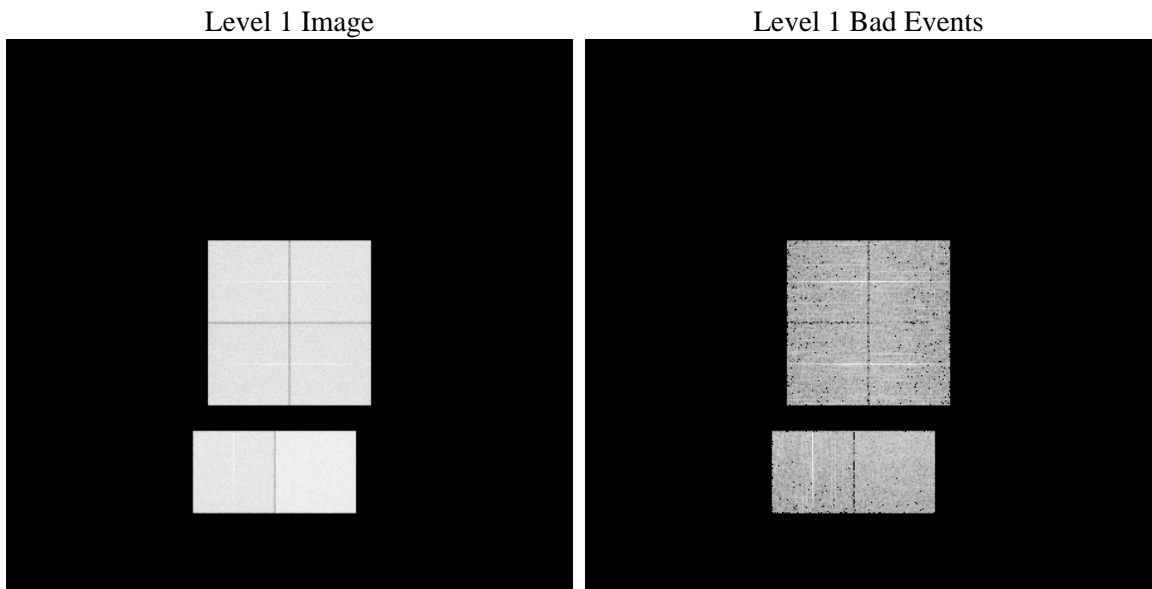
1 Front

seq_num	 	Sequence number
obs_id	60493	Observation id
title	ACIS-012367 diagnostics	Proposal title
observer	CHANDRA engineering request/realtime commanding	Principal investig
object	 	Source name
dtcycle	0	
cycle	P	events from which exps? Prim/Second/Both
ra_targ	0.0	Observer's specified target RA [deg]
dec_targ	0.0	Observer's specified target Dec [deg]
ra_nom	273.46547058834	Nominal RA [deg]
dec_nom	65.889782776532	Nominal Dec [deg]
roll_nom	306.16559446523	Nominal Roll [deg]
revision	3	Processing version of data
ontime	7811.199970901	Sum of GTIs [s]
livetime	7712.2898535295	Livetime [s]
ontime0	5301.4443508983	Sum of GTIs [s]
ontime1	5532.800860405	Sum of GTIs [s]
ontime2	5149.2004603148	Sum of GTIs [s]
ontime3	5260.5581830144	Sum of GTIs [s]
ontime6	5735.8581919372	Sum of GTIs [s]
ontime7	7811.199970901	Sum of GTIs [s]
l2events	1199122	Number of level 2 events

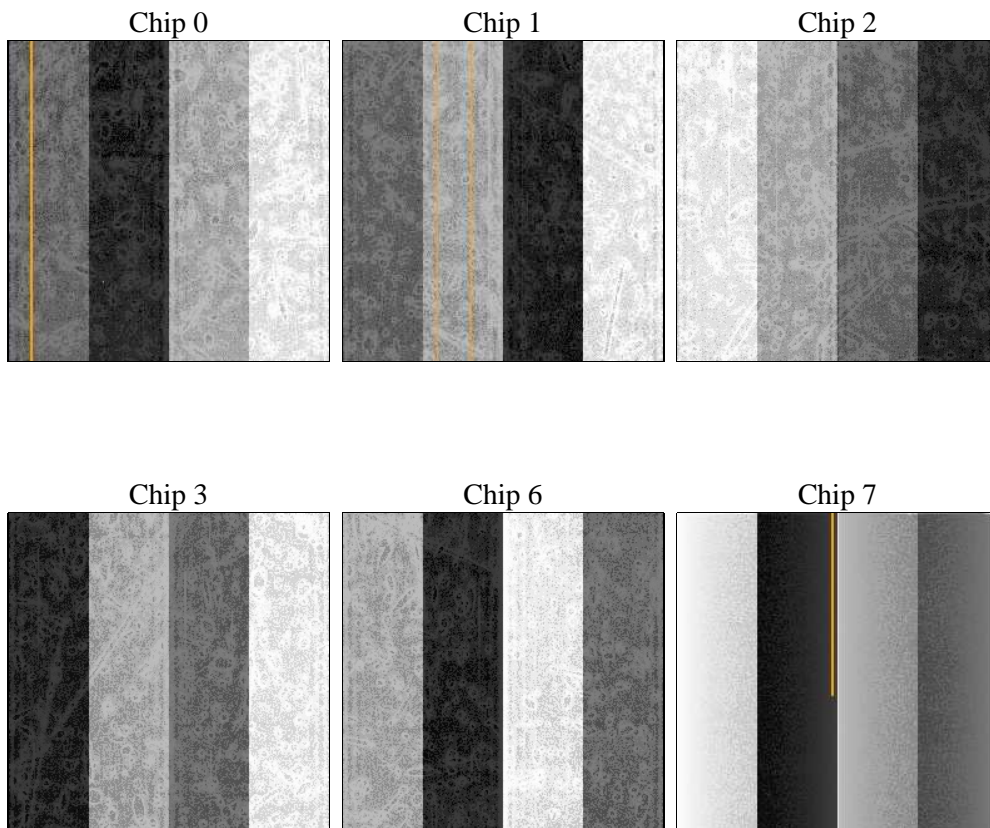
2 OBI

2.1 OBI

2.1.1 Images



2.1.2 Bias



2.1.3 Parameters

obi_num	4	Obi number	sched_exp_time	0.0	[s] Scheduled observation exposure time
ascdsver	8.4.5	Processing system revision	ontime	7811.199970901	Sum of GTIs [s]
caldsver	4.5.2	 	ontime0	5301.4443508983	Sum of GTIs [s]
date	2012-11-07T12:55:52	Date and time of file creation	ontime1	5532.800860405	Sum of GTIs [s]
revision	3	Processing version of data	ontime2	5149.2004603148	Sum of GTIs [s]
			ontime3	5260.5581830144	Sum of GTIs [s]
			ontime6	5735.8581919372	Sum of GTIs [s]
			ontime7	7811.199970901	Sum of GTIs [s]
			l1events	1422225	Number of level 1 events

2.1.4 Events

	ccd 0	ccd 1	ccd 2	ccd 3	ccd 6	ccd 7		ccd 0	ccd 1	ccd 2	ccd 3	ccd 6	ccd 7
level 1 events	213008	222324	209807	215805	242615	318666	grade 0 events	103284	108504	103280	106209	116890	73334
rejected events	25967	26190	26486	27656	28942	30639		48%	48%	49%	49%	48%	23%
rejected %	12%	11%	12%	12%	11%	9%	grade 1 events	465	452	509	484	448	195
								0%	0%	0%	0%	0%	0%
							grade 2 events	32503	34453	30924	31920	36972	64198
								15%	15%	14%	14%	15%	20%
							grade 3 events	12158	12457	11834	12354	13267	29097
								5%	5%	5%	5%	5%	9%
							grade 4 events	12187	12332	11956	12398	13214	29271
								5%	5%	5%	5%	5%	9%
							grade 5 events	1827	1898	1718	1956	2209	5994
								0%	0%	0%	0%	0%	1%
							grade 6 events	26909	28511	25327	25377	33330	92244
								12%	12%	12%	11%	13%	28%
							grade 7 events	23675	23717	24259	25107	26285	24333
								11%	10%	11%	11%	10%	7%

2.2 Compared Parameters

Parameter	Planned	Actual	Parameter	Planned	Actual
Instrument	ACIS	ACIS	Obspar format version number	7	7
Detector	ACIS-012367	ACIS-012367	Obspar file type	PREDICTED	ACTUAL
Grating	NONE	NONE	Obspar update status	NONE	UPDATED
Data mode	FAINT	FAINT	On-chip summing requested	N	N
Observation mode	SECONDARY	SECONDARY	Subarray requested	NONE	NONE
[deg] Pointing RA	0	273.4654705883435	Alternating exposures requested	N	N
[deg] Pointing Dec	0	65.88978277653206	[s] Primary exposure time	0.000000	3.2
[deg] Pointing Roll	0.0	306.1655944652284			
[mm] SIM focus pos	-0.782348	-0.6828225247311905			
[mm] SIM defocus	0	0.8505141146731063			
[mm] SIM translation stage pos	-233.592463	250.466033080201			
[mm] SIM translation stage offset	0	-0.01005468664627074			
[s] Observation start time (MET)	184134780.460935	184134779.43626			
Observation start date	2003-11-02T04:33:00	2003-11-02T04:32:59			
[s] Observation end time (MET)	184171032.662496	184171031.63782			
Observation end date	2003-11-02T14:37:13	2003-11-02T14:37:11			
Read mode	TIMED	TIMED			

2.3 Star Slots

2.4 FID Slots

A Summary

A.1 Status

V&V Scientist	Beth Sundheim
V&V Date (YYYY-MM-DD)	2012.12.07
V&V Edition	1
V&V Disposition and Status	OK
V&V Charge Time	7.811199970901

A.2 Comments