

V&V Reference Report

L2 ASCDS Version : 8.4.5

Observation 60486 - L2 Version 3
Chandra X-Ray Center

L2 Processing Date : Nov 8 2012

Contents

1	Front	2
2	OBI	3
2.1	OBI	3
2.1.1	Images	3
2.1.2	Bias	3
2.1.3	Parameters	4
2.1.4	Events	4
2.2	Compared Parameters	5
2.3	Star Slots	6
2.4	FID Slots	6
A	Summary	7
A.1	Status	7
A.2	Comments	7

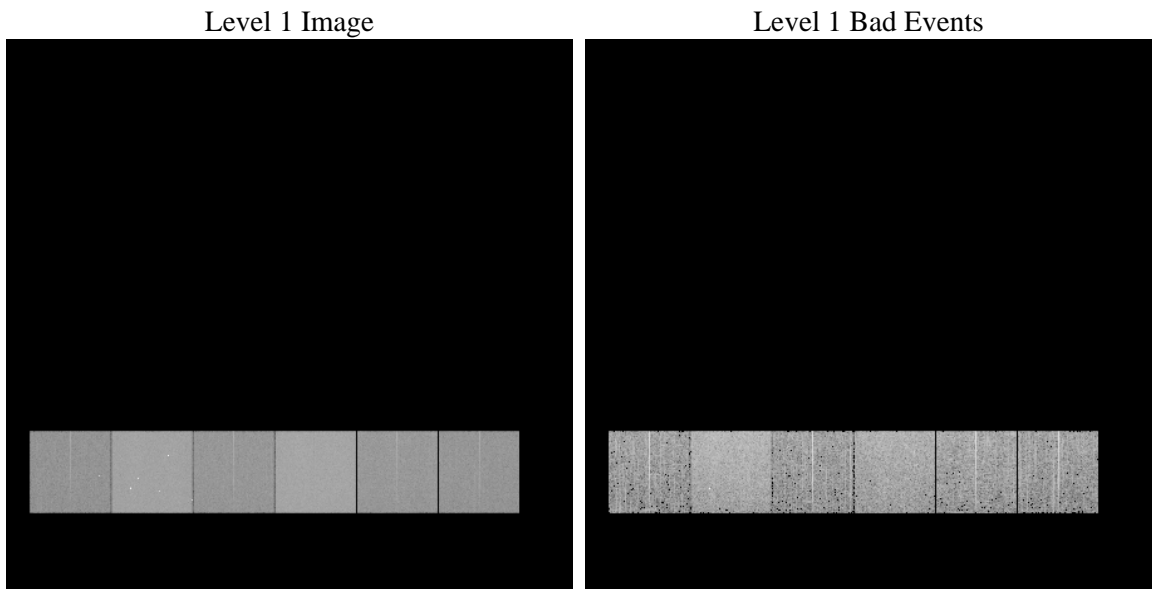
1 Front

seq_num	 	Sequence number
obs_id	60486	Observation id
title	ACIS-456789 diagnostics	Proposal title
observer	CHANDRA engineering request/realtime commanding	Principal investig
object	 	Source name
dtcycle	0	
cycle	P	events from which exps? Prim/Second/Both
ra_targ	0.0	Observer's specified target RA [deg]
dec_targ	0.0	Observer's specified target Dec [deg]
ra_nom	87.006600770753	Nominal RA [deg]
dec_nom	-26.972018477641	Nominal Dec [deg]
roll_nom	45.243300271469	Nominal Roll [deg]
revision	3	Processing version of data
ontime	7804.2382386029	Sum of GTIs [s]
livetime	7705.4162748776	Livetime [s]
ontime4	4268.4296673238	Sum of GTIs [s]
ontime5	7804.1971985996	Sum of GTIs [s]
ontime6	4628.0020079613	Sum of GTIs [s]
ontime7	7804.2382386029	Sum of GTIs [s]
ontime8	4747.8361863196	Sum of GTIs [s]
ontime9	4508.2095170319	Sum of GTIs [s]
l2events	1152205	Number of level 2 events

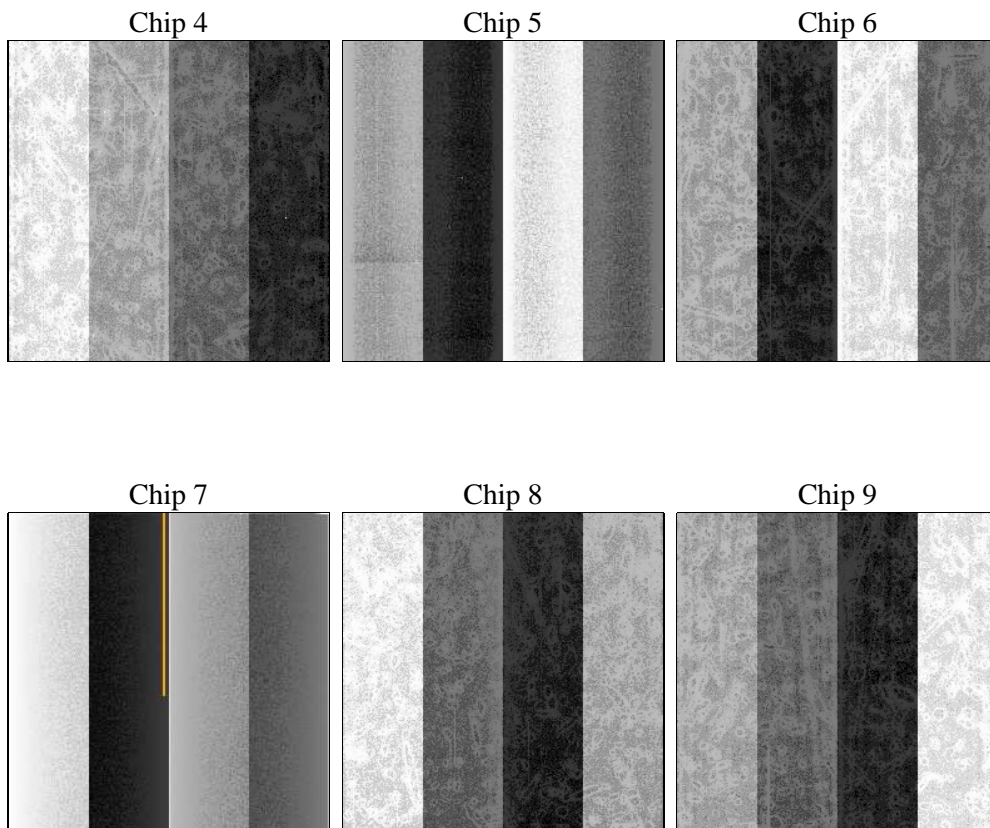
2 OBI

2.1 OBI

2.1.1 Images



2.1.2 Bias



2.1.3 Parameters

obi_num	1	Obi number	sched_exp_time	0.0	[s] Scheduled observation exposure time
ascdsver	8.4.5	Processing system revision	ontime	7804.2382386029	Sum of GTIs [s]
caldsver	4.5.2	 	ontime4	4268.4296673238	Sum of GTIs [s]
date	2012-11-08T02:36:33	Date and time of file creation	ontime5	7804.1971985996	Sum of GTIs [s]
revision	3	Processing version of data	ontime6	4628.0020079613	Sum of GTIs [s]
			ontime7	7804.2382386029	Sum of GTIs [s]
			ontime8	4747.8361863196	Sum of GTIs [s]
			ontime9	4508.2095170319	Sum of GTIs [s]
			l1events	1418159	Number of level 1 events

2.1.4 Events

	ccd 4	ccd 5	ccd 6	ccd 7	ccd 8	ccd 9		ccd 4	ccd 5	ccd 6	ccd 7	ccd 8	ccd 9
level 1 events	175970	308471	200189	332115	211491	189923	grade 0 events	85907	65834	93688	74272	98227	88844
rejected events	28343	45804	28505	37766	32603	28696		48%	21%	46%	22%	46%	46%
rejected %	16%	14%	14%	11%	15%	15%	grade 1 events	578	372	437	192	450	462
								0%	0%	0%	0%	0%	0%
							grade 2 events	23593	91830	29503	65218	31023	27750
								13%	29%	14%	19%	14%	14%
							grade 3 events	9524	16269	10599	29568	11707	10077
								5%	5%	5%	8%	5%	5%
							grade 4 events	9579	16368	10815	29025	11540	10280
								5%	5%	5%	8%	5%	5%
							grade 5 events	1874	7810	2126	7180	2457	2028
								1%	2%	1%	2%	1%	1%
							grade 6 events	19024	72366	27079	96266	26391	24276
								10%	23%	13%	28%	12%	12%
							grade 7 events	25891	37622	25942	30394	29696	26206
								14%	12%	12%	9%	14%	13%

2.2 Compared Parameters

Parameter	Planned	Actual	Parameter	Planned	Actual
Instrument	ACIS	ACIS	Obspar format version number	7	7
Detector	ACIS-456789	ACIS-456789	Obspar file type	PREDICTED	ACTUAL
Grating	NONE	NONE	Obspar update status	NONE	UPDATED
Data mode	FAINT	FAINT	On-chip summing requested	N	N
Observation mode	SECONDARY	SECONDARY	Subarray requested	NONE	NONE
[deg] Pointing RA	0	87.00660077075297	Alternating exposures requested	N	N
[deg] Pointing Dec	0	-26.97201847764139	[s] Primary exposure time	0.000000	3.2
[deg] Pointing Roll	0.0	45.2433002714691			
[mm] SIM focus pos	-0.684267	-0.6828225247311905			
[mm] SIM defocus	0	0.8505141146731063			
[mm] SIM translation stage pos	-190.132523	250.466033080201			
[mm] SIM translation stage offset	0	-0.01005468664627074			
[s] Observation start time (MET)	185044004.700406	185044003.67565			
Observation start date	2003-11-12T17:06:45	2003-11-12T17:06:43			
[s] Observation end time (MET)	185077856.351879	185077855.32712			
Observation end date	2003-11-13T02:30:56	2003-11-13T02:30:55			
Read mode	TIMED	TIMED			

2.3 Star Slots

2.4 FID Slots

A Summary

A.1 Status

V&V Scientist	Beth Sundheim
V&V Date (YYYY-MM-DD)	2012.12.07
V&V Edition	1
V&V Disposition and Status	OK
V&V Charge Time	7.8042382386029

A.2 Comments