

V&V Reference Report

L2 ASCDS Version : 7.6.8

Observation 60486 - L2 Version 001
Chandra X-Ray Center

L2 Processing Date : Jun 30 2006

Contents

| | | |
|----------|-------------------------------|----------|
| 1 | Front | 2 |
| 2 | OBI | 3 |
| 2.1 | OBI | 3 |
| 2.1.1 | Images | 3 |
| 2.1.2 | Bias | 3 |
| 2.1.3 | Parameters | 4 |
| 2.1.4 | Events | 4 |
| 2.2 | Compared Parameters | 5 |
| 2.3 | Aspect | 6 |
| 2.4 | Star Slots | 8 |
| 2.5 | FID Slots | 8 |
| A | Summary | 9 |
| A.1 | Status | 9 |
| A.2 | Comments | 9 |

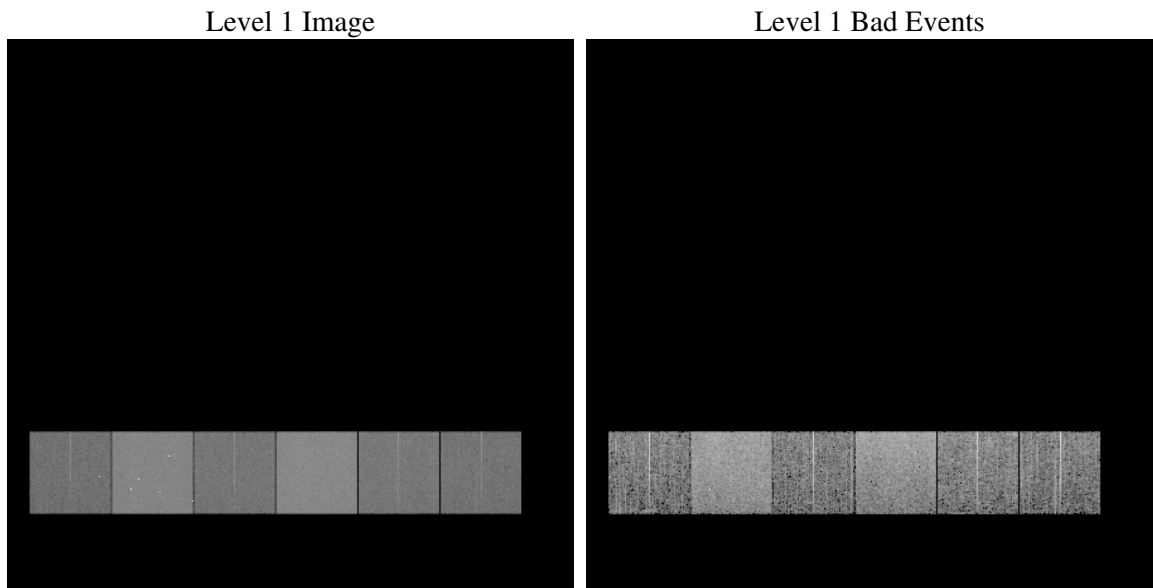
1 Front

| | |
|----------|---|
| seq_num | |
| obs_id | 60486 |
| title | ACIS-456789 diagnostics |
| observer | CHANDRA engineering request/realtime commanding |
| object | |
| dtcycle | 0 |
| cycle | P |
| ra_targ | 0.0 |
| dec_targ | 0.0 |
| ra_nom | 87.00657880223 |
| dec_nom | -26.972038178027 |
| roll_nom | 45.243290299872 |
| revision | 2 |
| ontime | 7803.2955905497 |
| livetime | 7704.4855632017 |
| ontime4 | 4267.5145196617 |
| ontime5 | 7803.336630553 |
| ontime6 | 4627.2235199213 |
| ontime7 | 7803.2955905497 |
| ontime8 | 4747.2218582332 |
| ontime9 | 4507.1847889721 |
| l2events | 1135083 |

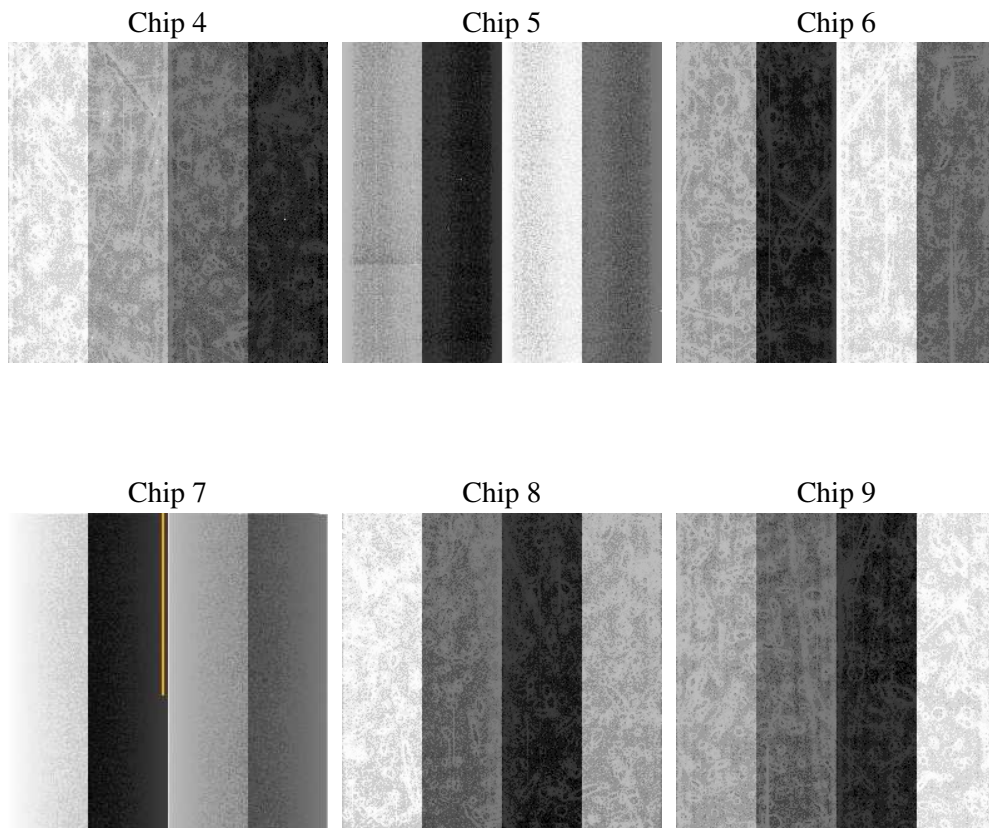
2 OBI

2.1 OBI

2.1.1 Images



2.1.2 Bias



2.1.3 Parameters

| | |
|----------|---------------------|
| obi_num | 1 |
| ascdsver | 7.6.8 |
| caldbver | 3.2.2 |
| date | 2006-06-30T15:59:41 |
| revision | 2 |

| | |
|----------------|-----------------|
| sched_exp_time | 0.0 |
| ontime | 7804.3338582218 |
| ontime4 | 4268.4296673238 |
| ontime5 | 7804.3338582218 |
| ontime6 | 4628.1797075868 |
| ontime7 | 7804.3338582218 |
| ontime8 | 4748.0959659219 |
| ontime9 | 4508.2640966475 |
| l1events | 1418159 |

2.1.4 Events

| | ccd 4 | ccd 5 | ccd 6 | ccd 7 | ccd 8 | ccd 9 |
|-----------------|--------|--------|--------|--------|--------|--------|
| level 1 events | 175970 | 308471 | 200189 | 332115 | 211491 | 189923 |
| rejected events | 28343 | 53087 | 28505 | 47965 | 32603 | 28696 |
| rejected % | 16% | 17% | 14% | 14% | 15% | 15% |

| | ccd 4 | ccd 5 | ccd 6 | ccd 7 | ccd 8 | ccd 9 |
|----------------|-------|--------|-------|--------|-------|-------|
| grade 0 events | 85907 | 35758 | 93689 | 52384 | 98227 | 88844 |
| | 48% | 11% | 46% | 15% | 46% | 46% |
| grade 1 events | 578 | 266 | 437 | 114 | 450 | 462 |
| | 0% | 0% | 0% | 0% | 0% | 0% |
| grade 2 events | 23593 | 118722 | 29502 | 85486 | 31023 | 27750 |
| | 13% | 38% | 14% | 25% | 14% | 14% |
| grade 3 events | 9524 | 8509 | 10599 | 21184 | 11707 | 10077 |
| | 5% | 2% | 5% | 6% | 5% | 5% |
| grade 4 events | 9579 | 8570 | 10815 | 20790 | 11540 | 10280 |
| | 5% | 2% | 5% | 6% | 5% | 5% |
| grade 5 events | 1874 | 5675 | 2125 | 6141 | 2457 | 2028 |
| | 1% | 1% | 1% | 1% | 1% | 1% |
| grade 6 events | 19024 | 83825 | 27079 | 104306 | 26391 | 24276 |
| | 10% | 27% | 13% | 31% | 12% | 12% |
| grade 7 events | 25891 | 47146 | 25943 | 41710 | 29696 | 26206 |
| | 14% | 15% | 12% | 12% | 14% | 13% |

2.2 Compared Parameters

| Parameter | Planned | Actual | Parameter | Planned | Actual |
|-----------------------------------|---------------------|----------------------|---------------------------------|-----------|---------|
| Instrument | ACIS | ACIS | Obspar format version number | 6 | 6 |
| Detector | ACIS-456789 | ACIS-456789 | Obspar file type | PREDICTED | ACTUAL |
| Grating | NONE | NONE | Obspar update status | NONE | UPDATED |
| Data mode | FAINT | FAINT | On-chip summing requested | N | N |
| Observation mode | SECONDARY | SECONDARY | Subarray requested | NONE | NONE |
| Pointing RA | 0 | 87.00657880223001 | Alternating exposures requested | N | N |
| Pointing Dec | 0 | -26.97203817802747 | Primary exposure time | 0.000000 | 3.2 |
| Pointing Roll | 0.0 | 45.2432902998723 | | | |
| SIM focus pos (mm) | -0.684267 | -0.6828225247311905 | | | |
| SIM defocus (mm) | 0 | 0.8505141146731063 | | | |
| SIM translation stage pos (mm) | -190.132523 | 250.466033080201 | | | |
| SIM translation stage offset (mm) | 0 | -0.01005468664627074 | | | |
| Observation start time | 185044004.700406 | 185044003.67565 | | | |
| Observation start date | 2003-11-12T17:06:45 | 2003-11-12T17:06:43 | | | |
| Observation end time | 185077856.351879 | 185077855.32712 | | | |
| Observation end date | 2003-11-13T02:30:56 | 2003-11-13T02:30:55 | | | |
| Read mode | TIMED | TIMED | | | |

2.3 Aspect

2.4 Star Slots

2.5 FID Slots

A Summary

A.1 Status

| | |
|----------------------------|---------------|
| V&V Scientist | Beth Sundheim |
| V&V Date (YYYY-MM-DD) | 2006.06.30 |
| V&V Edition | 1 |
| V&V Disposition and Status | OK |
| V&V Charge Time | 7.80329559 |

A.2 Comments