

V&V Reference Report

L2 ASCDS Version : 8.4.5

Observation 60483 - L2 Version 3
Chandra X-Ray Center

L2 Processing Date : Nov 8 2012

Contents

1	Front	2
2	OBI	3
2.1	OBI	3
2.1.1	Images	3
2.1.2	Bias	3
2.1.3	Parameters	4
2.1.4	Events	4
2.2	Compared Parameters	5
2.3	Star Slots	6
2.4	FID Slots	6
A	Summary	7
A.1	Status	7
A.2	Comments	7

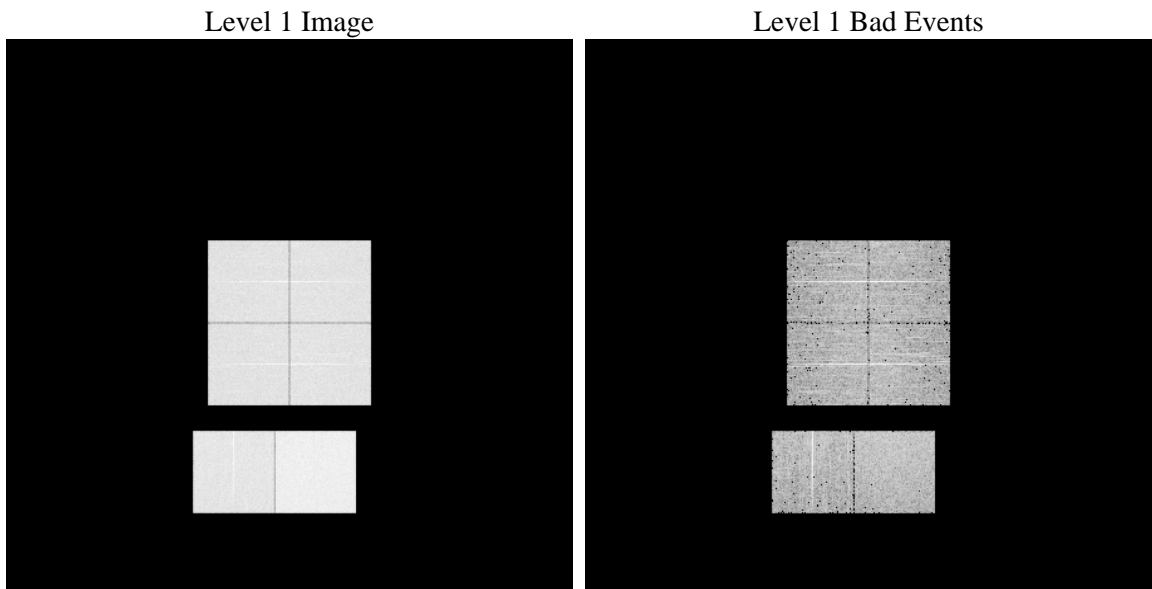
1 Front

seq_num	 	Sequence number
obs_id	60483	Observation id
title	ACIS-012367 diagnostics	Proposal title
observer	CHANDRA engineering request/realtime commanding	Principal investig
object	 	Source name
dtcycle	0	
cycle	P	events from which exps? Prim/Second/Both
ra_targ	0.0	Observer's specified target RA [deg]
dec_targ	0.0	Observer's specified target Dec [deg]
ra_nom	164.98615468091	Nominal RA [deg]
dec_nom	-25.974225000626	Nominal Dec [deg]
roll_nom	82.8493863478	Nominal Roll [deg]
revision	3	Processing version of data
ontime	7807.9585854709	Sum of GTIs [s]
livetime	7709.0895124735	Livetime [s]
ontime0	5318.8563871086	Sum of GTIs [s]
ontime1	5344.7421635389	Sum of GTIs [s]
ontime2	5121.0737668574	Sum of GTIs [s]
ontime3	5299.492446959	Sum of GTIs [s]
ontime6	5658.8094286621	Sum of GTIs [s]
ontime7	7807.9585854709	Sum of GTIs [s]
l2events	1175984	Number of level 2 events

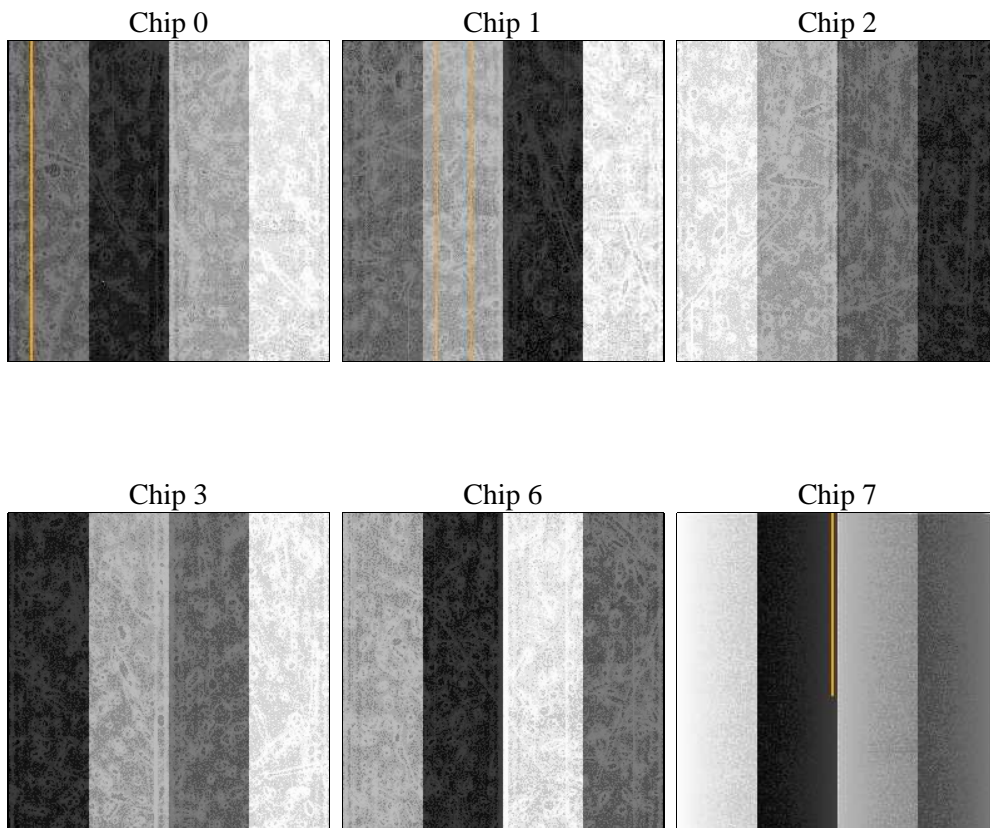
2 OBI

2.1 OBI

2.1.1 Images



2.1.2 Bias



2.1.3 Parameters

obi_num	0	Obi number	sched_exp_time	0.0	[s] Scheduled observation exposure time
ascdsver	8.4.5	Processing system revision	ontime	7807.9585854709	Sum of GTIs [s]
caldsver	4.5.2	 	ontime0	5318.8563871086	Sum of GTIs [s]
date	2012-11-08T06:19:11	Date and time of file creation	ontime1	5344.7421635389	Sum of GTIs [s]
revision	3	Processing version of data	ontime2	5121.0737668574	Sum of GTIs [s]
			ontime3	5299.492446959	Sum of GTIs [s]
			ontime6	5658.8094286621	Sum of GTIs [s]
			ontime7	7807.9585854709	Sum of GTIs [s]
			l1events	1420547	Number of level 1 events

2.1.4 Events

	ccd 0	ccd 1	ccd 2	ccd 3	ccd 6	ccd 7		ccd 0	ccd 1	ccd 2	ccd 3	ccd 6	ccd 7
level 1 events	213456	215518	210497	218895	238738	323443	grade 0 events	101959	102378	101719	105758	113014	71386
rejected events	28836	29379	30123	31341	32402	36693		47%	47%	48%	48%	47%	22%
rejected %	13%	13%	14%	14%	13%	11%	grade 1 events	468	404	526	547	459	201
								0%	0%	0%	0%	0%	0%
							grade 2 events	32606	33118	30664	31877	35611	63672
								15%	15%	14%	14%	14%	19%
							grade 3 events	11848	11642	11531	12202	12791	29012
								5%	5%	5%	5%	5%	8%
							grade 4 events	11839	11819	11728	12269	12768	28947
								5%	5%	5%	5%	5%	8%
							grade 5 events	2036	2066	1955	2172	2404	7059
								0%	0%	0%	0%	1%	2%
							grade 6 events	26479	27306	24848	25571	32152	93845
								12%	12%	11%	11%	13%	29%
							grade 7 events	26221	26785	27526	28499	29539	29321
								12%	12%	13%	13%	12%	9%

2.2 Compared Parameters

Parameter	Planned	Actual	Parameter	Planned	Actual
Instrument	ACIS	ACIS	Obspar format version number	7	7
Detector	ACIS-012367	ACIS-012367	Obspar file type	PREDICTED	ACTUAL
Grating	NONE	NONE	Obspar update status	NONE	UPDATED
Data mode	FAINT	FAINT	On-chip summing requested	N	N
Observation mode	SECONDARY	SECONDARY	Subarray requested	NONE	NONE
[deg] Pointing RA	0	164.9861546809113	Alternating exposures requested	N	N
[deg] Pointing Dec	0	-25.97422500062638	[s] Primary exposure time	0.000000	3.2
[deg] Pointing Roll	0.0	82.84938634780048			
[mm] SIM focus pos	-0.782348	-0.6828225247311905			
[mm] SIM defocus	0	0.8505141146731063			
[mm] SIM translation stage pos	-233.592463	250.466033080201			
[mm] SIM translation stage offset	0	-0.01005468664627074			
[s] Observation start time (MET)	185277309.060491	185277308.03576			
Observation start date	2003-11-15T09:55:09	2003-11-15T09:55:08			
[s] Observation end time (MET)	185291784.111119	185291783.08639			
Observation end date	2003-11-15T13:56:24	2003-11-15T13:56:23			
Read mode	TIMED	TIMED			

2.3 Star Slots

2.4 FID Slots

A Summary

A.1 Status

V&V Scientist	Beth Sundheim
V&V Date (YYYY-MM-DD)	2012.12.10
V&V Edition	1
V&V Disposition and Status	OK
V&V Charge Time	7.8079585854709

A.2 Comments