

V&V Reference Report

L2 ASCDS Version : 7.6.8

Observation 60467 - L2 Version 001
Chandra X-Ray Center

L2 Processing Date : Jun 27 2006

Contents

1	Front	2
2	OBI	3
2.1	OBI	3
2.1.1	Images	3
2.1.2	Bias	3
2.1.3	Parameters	4
2.1.4	Events	4
2.2	Compared Parameters	5
2.3	Aspect	6
2.4	Star Slots	8
2.5	FID Slots	8
A	Summary	9
A.1	Status	9
A.2	Comments	9

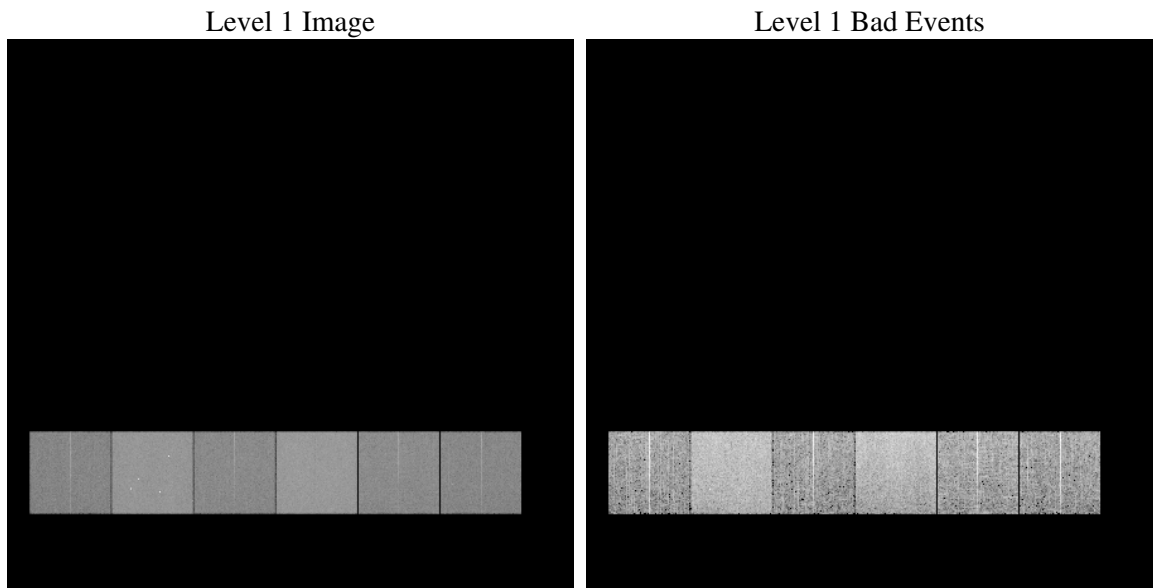
1 Front

seq_num	
obs_id	60467
title	ACIS-456789 diagnostics
observer	CHANDRA engineering request/realtime commanding
object	
dtcycle	0
cycle	P
ra_targ	0.0
dec_targ	0.0
ra_nom	235.02731841483
dec_nom	40.01947925756
roll_nom	10.069447983358
revision	2
ontime	8351.9999688864
livetime	8246.2419163097
ontime4	5010.5642629862
ontime5	8351.9999688864
ontime6	5331.1159619987
ontime7	8351.9999688864
ontime8	5480.5055850148
ontime9	5172.6140403152
l2events	1220517

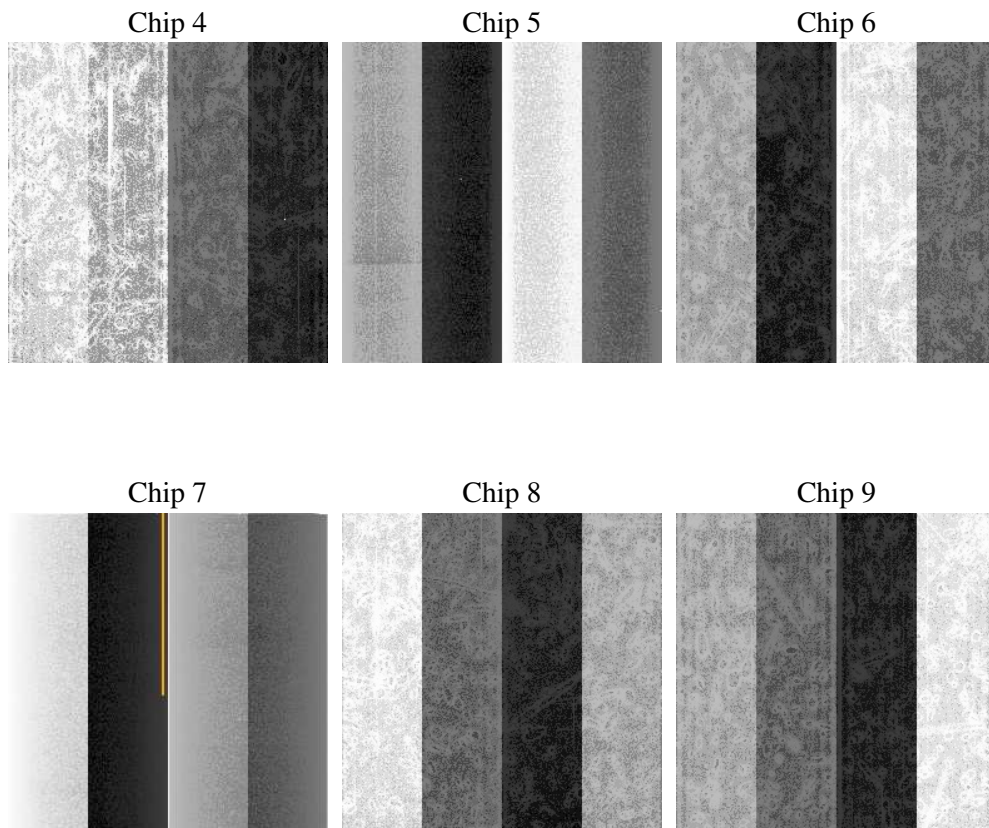
2 OBI

2.1 OBI

2.1.1 Images



2.1.2 Bias



2.1.3 Parameters

obi_num	1
ascdsver	7.6.8
caldbver	3.2.2
date	2006-06-27T03:12:53
revision	2

sched_exp_time	0.0
ontime	8468.7290870547
ontime4	5062.4740460515
ontime5	8468.7290870547
ontime6	5406.017678678
ontime7	8468.7290870547
ontime8	5555.1020999849
ontime9	5250.4516152442
l1events	1535820

2.1.4 Events

	ccd 4	ccd 5	ccd 6	ccd 7	ccd 8	ccd 9
level 1 events	200612	317459	225398	344273	236087	211991
rejected events	32769	59319	32516	54819	36934	32461
rejected %	16%	18%	14%	15%	15%	15%

	ccd 4	ccd 5	ccd 6	ccd 7	ccd 8	ccd 9
grade 0 events	98723	31066	107270	51751	111000	100877
	49%	9%	47%	15%	47%	47%
grade 1 events	621	82	505	124	512	467
	0%	0%	0%	0%	0%	0%
grade 2 events	27180	125004	33619	89789	35163	31083
	13%	39%	14%	26%	14%	14%
grade 3 events	11016	8115	12038	21096	12970	11572
	5%	2%	5%	6%	5%	5%
grade 4 events	11096	7787	11983	20786	12967	11628
	5%	2%	5%	6%	5%	5%
grade 5 events	1992	5866	2254	6287	2628	2308
	0%	1%	1%	1%	1%	1%
grade 6 events	21578	89741	30735	110107	29744	27089
	10%	28%	13%	31%	12%	12%
grade 7 events	28406	49798	26994	44333	31103	26967
	14%	15%	11%	12%	13%	12%

2.2 Compared Parameters

Parameter	Planned	Actual	Parameter	Planned	Actual
Instrument	ACIS	ACIS	Obspar format version number	6	6
Detector	ACIS-456789	ACIS-456789	Obspar file type	PREDICTED	ACTUAL
Grating	NONE	NONE	Obspar update status	NONE	UPDATED
Data mode	FAINT	FAINT	On-chip summing requested	N	N
Observation mode	SECONDARY	SECONDARY	Subarray requested	NONE	NONE
Pointing RA	0	235.0273184148256	Alternating exposures requested	N	N
Pointing Dec	0	40.01947925755997	Primary exposure time	0.000000	3.2
Pointing Roll	0.0	10.06944798335818			
SIM focus pos (mm)	-0.684267	-0.6828225247311905			
SIM defocus (mm)	0	0.8505141146731063			
SIM translation stage pos (mm)	-190.132523	250.466033080201			
SIM translation stage offset (mm)	0	-0.01005468664627074			
Observation start time	186454757.361507	186454756.3368			
Observation start date	2003-11-29T00:59:17	2003-11-29T00:59:16			
Observation end time	186477299.162484	186477298.13778			
Observation end date	2003-11-29T07:14:59	2003-11-29T07:14:58			
Read mode	TIMED	TIMED			

2.3 Aspect

2.4 Star Slots

2.5 FID Slots

A Summary

A.1 Status

V&V Scientist	Jen Lauer
V&V Date (YYYY-MM-DD)	2006.06.27
V&V Edition	1
V&V Disposition and Status	OK
V&V Charge Time	8.35199996

A.2 Comments