

# V&V Reference Report

## L2 ASCDS Version : 7.6.8

Observation 60463 - L2 Version 001  
Chandra X-Ray Center

L2 Processing Date : Jun 27 2006

## Contents

<b>1</b>	<b>Front</b>	<b>2</b>
<b>2</b>	<b>OBI</b>	<b>3</b>
2.1	OBI . . . . .	3
2.1.1	Images . . . . .	3
2.1.2	Bias . . . . .	3
2.1.3	Parameters . . . . .	4
2.1.4	Events . . . . .	4
2.2	Compared Parameters . . . . .	5
2.3	Aspect . . . . .	6
2.4	Star Slots . . . . .	8
2.5	FID Slots . . . . .	8
<b>A</b>	<b>Summary</b>	<b>9</b>
A.1	Status . . . . .	9
A.2	Comments . . . . .	9

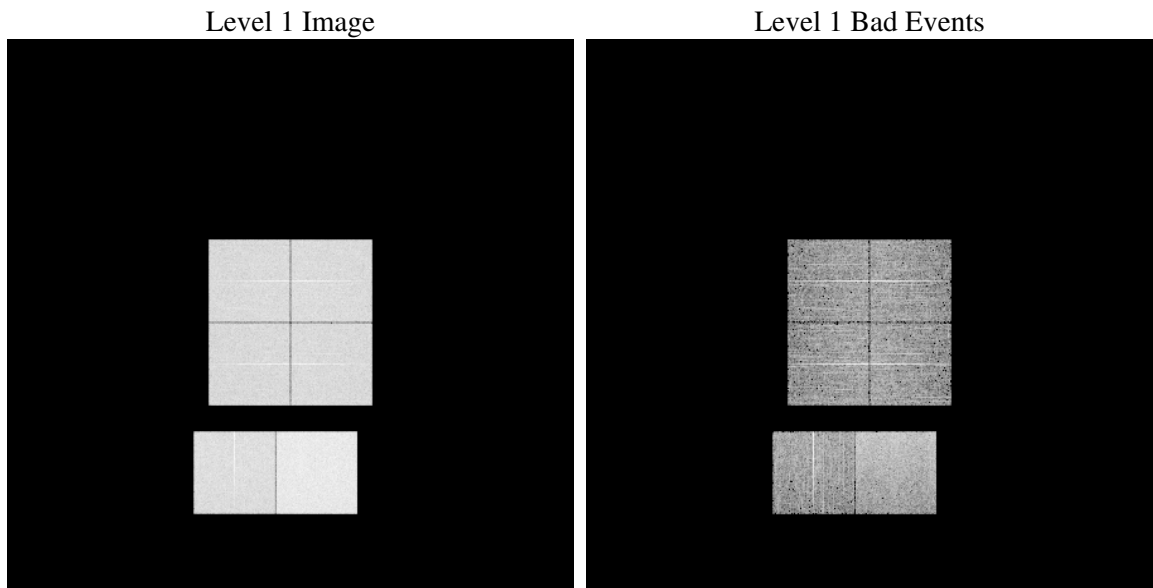
# 1 Front

seq_num	&#160
obs_id	60463
title	ACIS-012367 diagnostics
observer	CHANDRA engineering request/realtime commanding
object	&#160
dtcycle	0
cycle	P
ra_targ	0.0
dec_targ	0.0
ra_nom	89.020521320681
dec_nom	-37.976412467325
roll_nom	22.641759211618
revision	2
ontime	8451.1999685168
livetime	8344.1857858138
ontime0	5884.3496150374
ontime1	5981.8338450789
ontime2	5586.1795422435
ontime3	5741.7465543449
ontime6	6156.9283092618
ontime7	8451.1999685168
l2events	1259102

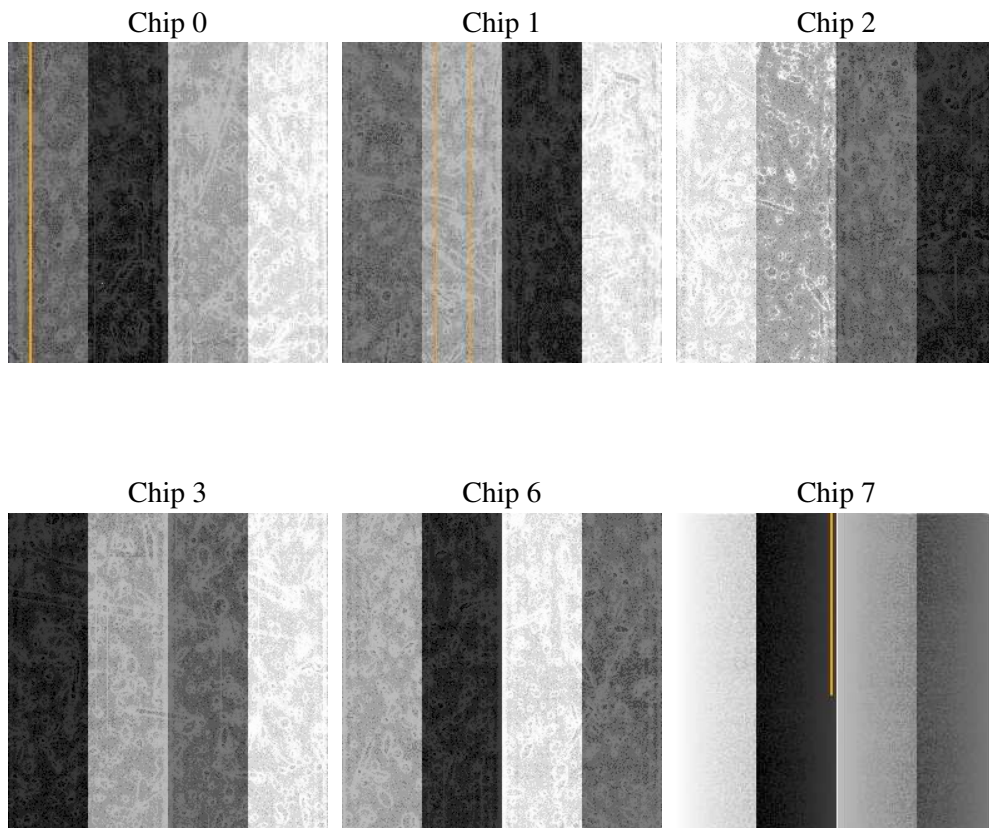
## 2 OBI

### 2.1 OBI

#### 2.1.1 Images



#### 2.1.2 Bias



### 2.1.3 Parameters

obi_num	0
ascdsver	7.6.8
caldbver	3.2.2
date	2006-06-27T04:05:45
revision	2

sched_exp_time	0.0
ontime	8468.7431669831
ontime0	5895.4108729661
ontime1	5995.8815295696
ontime2	5597.2407901287
ontime3	5756.0487825274
ontime6	6174.1349338591
ontime7	8468.7431669831
l1events	1538415

### 2.1.4 Events

	ccd 0	ccd 1	ccd 2	ccd 3	ccd 6	ccd 7
level 1 events	233299	239324	227929	233503	258558	345802
rejected events	31286	32703	33030	33127	35918	52702
rejected %	13%	13%	14%	14%	13%	15%

	ccd 0	ccd 1	ccd 2	ccd 3	ccd 6	ccd 7
grade 0 events	112115	114042	109865	112694	121555	51991
	48%	47%	48%	48%	47%	15%
grade 1 events	541	506	520	595	521	122
	0%	0%	0%	0%	0%	0%
grade 2 events	35355	36577	33091	34321	38440	89209
	15%	15%	14%	14%	14%	25%
grade 3 events	12803	12970	12693	12901	13873	21472
	5%	5%	5%	5%	5%	6%
grade 4 events	12994	13058	12603	13226	14026	20832
	5%	5%	5%	5%	5%	6%
grade 5 events	2275	2280	2080	2361	2633	6549
	0%	0%	0%	1%	1%	1%
grade 6 events	29115	30421	27016	27685	35339	110187
	12%	12%	11%	11%	13%	31%
grade 7 events	28101	29470	30061	29720	32171	45440
	12%	12%	13%	12%	12%	13%

## 2.2 Compared Parameters

Parameter	Planned	Actual	Parameter	Planned	Actual
Instrument	ACIS	ACIS	Obspar format version number	6	6
Detector	ACIS-012367	ACIS-012367	Obspar file type	PREDICTED	ACTUAL
Grating	NONE	NONE	Obspar update status	NONE	UPDATED
Data mode	FAINT	FAINT	On-chip summing requested	N	N
Observation mode	SECONDARY	SECONDARY	Subarray requested	NONE	NONE
Pointing RA	0	89.02052132068106	Alternating exposures requested	N	N
Pointing Dec	0	-37.97641246732525	Primary exposure time	0.000000	3.2
Pointing Roll	0.0	22.64175921161837			
SIM focus pos (mm)	-0.782348	-0.6828225247311905			
SIM defocus (mm)	0	0.8505141146731063			
SIM translation stage pos (mm)	-233.592463	250.466033080201			
SIM translation stage offset (mm)	0	-0.01005468664627074			
Observation start time	186685097.421487	186685096.39678			
Observation start date	2003-12-01T16:58:17	2003-12-01T16:58:16			
Observation end time	186707600.272462	186707599.24776			
Observation end date	2003-12-01T23:13:20	2003-12-01T23:13:19			
Read mode	TIMED	TIMED			

## 2.3 Aspect



## **2.4 Star Slots**

## **2.5 FID Slots**



## A Summary

### A.1 Status

V&V Scientist	Jen Lauer
V&V Date (YYYY-MM-DD)	2006.06.27
V&V Edition	1
V&V Disposition and Status	OK
V&V Charge Time	8.45119996

### A.2 Comments