

# V&V Reference Report

## L2 ASCDS Version : 7.6.8

Observation 60461 - L2 Version 001  
Chandra X-Ray Center

L2 Processing Date : Jun 23 2006

## Contents

<b>1</b>	<b>Front</b>	<b>2</b>
<b>2</b>	<b>OBI</b>	<b>3</b>
2.1	OBI . . . . .	3
2.1.1	Images . . . . .	3
2.1.2	Bias . . . . .	3
2.1.3	Parameters . . . . .	4
2.1.4	Events . . . . .	4
2.2	Compared Parameters . . . . .	5
2.3	Aspect . . . . .	6
2.4	Star Slots . . . . .	8
2.5	FID Slots . . . . .	8
<b>A</b>	<b>Summary</b>	<b>9</b>
A.1	Status . . . . .	9
A.2	Comments . . . . .	9

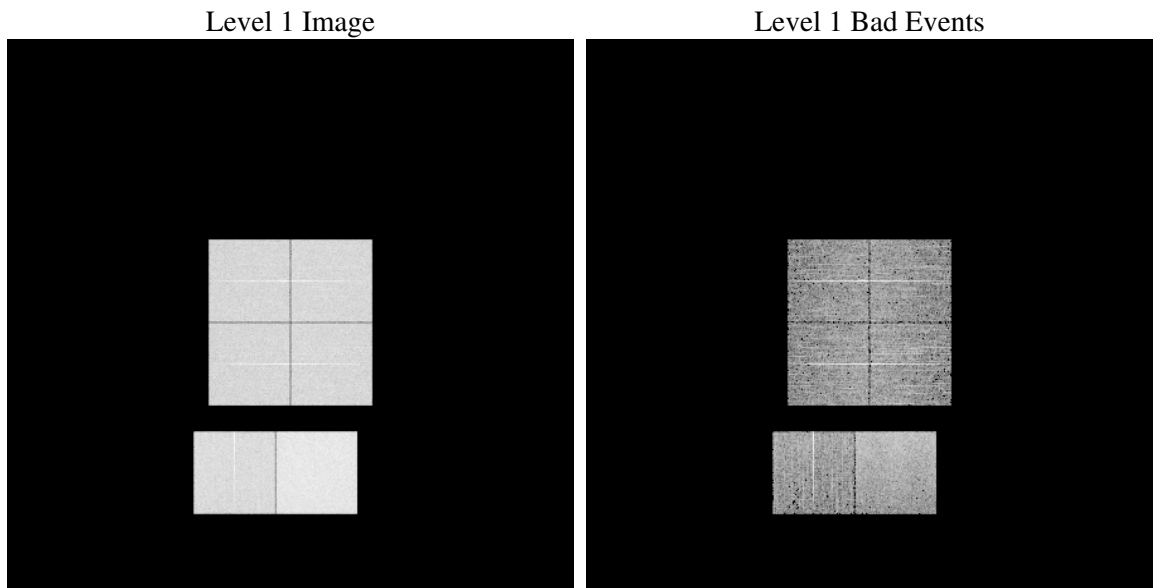
# 1 Front

seq_num	&#160
obs_id	60461
title	ACIS-012367 diagnostics
observer	CHANDRA engineering request/realtime commanding
object	&#160
dtcycle	0
cycle	P
ra_targ	0.0
dec_targ	0.0
ra_nom	111.95181461144
dec_nom	57.011361399772
roll_nom	123.69765151773
revision	2
ontime	7807.9999709129
livetime	7709.1303738681
ontime0	5339.5037197471
ontime1	5487.4551183581
ontime2	5208.7304749191
ontime3	5289.7550918758
ontime6	5753.2165177763
ontime7	7807.9999709129
l2events	1155172

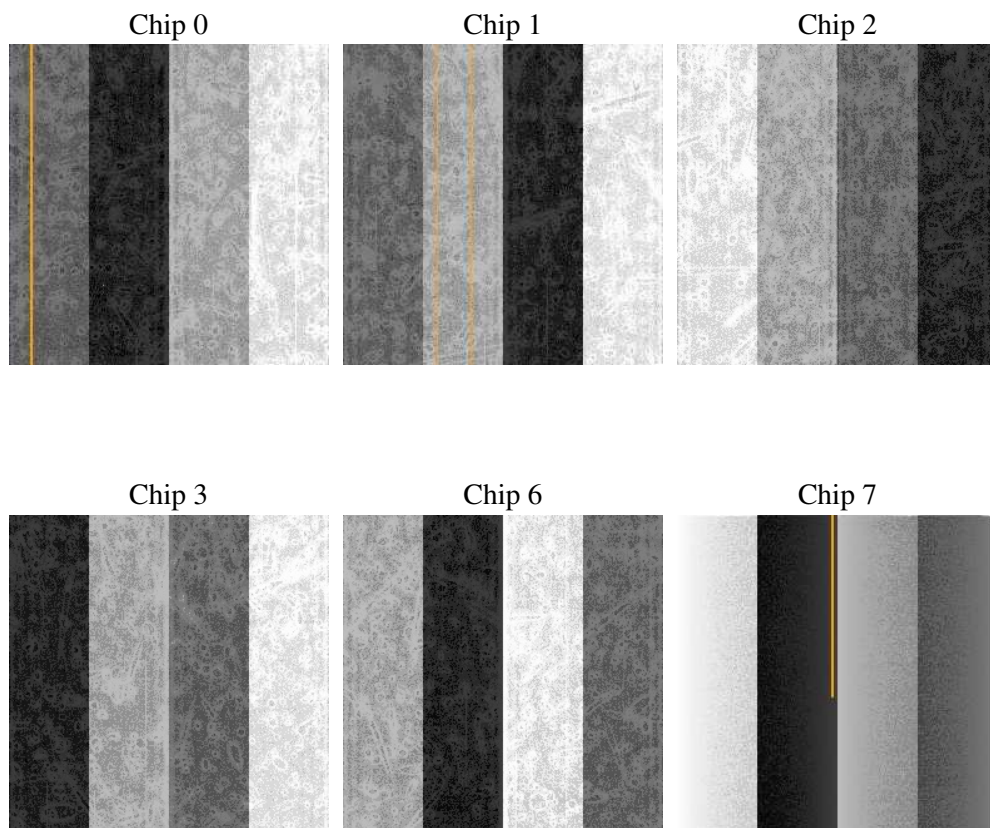
## 2 OBI

### 2.1 OBI

#### 2.1.1 Images



#### 2.1.2 Bias



### 2.1.3 Parameters

obi_num	1
ascdsver	7.6.8
caldbver	3.2.2
date	2006-06-23T22:30:53
revision	2

sched_exp_time	0.0
ontime	7810.8345685005
ontime0	5341.2049305737
ontime1	5490.2897159457
ontime2	5211.5650725067
ontime3	5292.5896894634
ontime6	5756.0511153638
ontime7	7810.8345685005
l1events	1420115

### 2.1.4 Events

	ccd 0	ccd 1	ccd 2	ccd 3	ccd 6	ccd 7
level 1 events	211426	217488	211516	217422	240431	321832
rejected events	29805	30350	32166	34096	34540	48792
rejected %	14%	13%	15%	15%	14%	15%

	ccd 0	ccd 1	ccd 2	ccd 3	ccd 6	ccd 7
grade 0 events	100695	103286	101047	103562	112399	49239
	47%	47%	47%	47%	46%	15%
grade 1 events	480	413	543	535	515	99
	0%	0%	0%	0%	0%	0%
grade 2 events	31442	33381	30123	31246	35608	82811
	14%	15%	14%	14%	14%	25%
grade 3 events	11672	11885	11797	11960	12696	20174
	5%	5%	5%	5%	5%	6%
grade 4 events	11614	11878	11699	11728	12640	19687
	5%	5%	5%	5%	5%	6%
grade 5 events	2090	2119	2011	2260	2454	6084
	0%	0%	0%	1%	1%	1%
grade 6 events	26333	26827	24684	24951	32548	101234
	12%	12%	11%	11%	13%	31%
grade 7 events	27100	27699	29612	31180	31571	42504
	12%	12%	13%	14%	13%	13%

## 2.2 Compared Parameters

Parameter	Planned	Actual	Parameter	Planned	Actual
Instrument	ACIS	ACIS	Obspar format version number	6	6
Detector	ACIS-012367	ACIS-012367	Obspar file type	PREDICTED	ACTUAL
Grating	NONE	NONE	Obspar update status	NONE	UPDATED
Data mode	FAINT	FAINT	On-chip summing requested	N	N
Observation mode	SECONDARY	SECONDARY	Subarray requested	NONE	NONE
Pointing RA	0	111.9518146114393	Alternating exposures requested	N	N
Pointing Dec	0	57.01136139977235	Primary exposure time	0.000000	3.2
Pointing Roll	0.0	123.6976515177348			
SIM focus pos (mm)	-0.782348	-0.6828225247311905			
SIM defocus (mm)	0	0.8505141146731063			
SIM translation stage pos (mm)	-233.592463	250.4635187648994			
SIM translation stage offset (mm)	0	-0.007540371344731511			
Observation start time	187101749.689568	187101748.66485			
Observation start date	2003-12-06T12:42:30	2003-12-06T12:42:28			
Observation end time	187140648.441255	187140647.41653			
Observation end date	2003-12-06T23:30:48	2003-12-06T23:30:47			
Read mode	TIMED	TIMED			

## 2.3 Aspect



## **2.4 Star Slots**

## **2.5 FID Slots**



# A Summary

## A.1 Status

V&V Scientist	Jen Lauer
V&V Date (YYYY-MM-DD)	2006.06.26
V&V Edition	1
V&V Disposition and Status	OK
V&V Charge Time	7.80799997

## A.2 Comments

The ACIS focal plane temperature was above calibration limits for the first 4 ksec of the observation.