

# V&V Reference Report

## L2 ASCDS Version : 7.6.8

Observation 60459 - L2 Version 001  
Chandra X-Ray Center

L2 Processing Date : Jun 23 2006

## Contents

<b>1</b>	<b>Front</b>	<b>2</b>
<b>2</b>	<b>OBI</b>	<b>3</b>
2.1	OBI . . . . .	3
2.1.1	Images . . . . .	3
2.1.2	Bias . . . . .	3
2.1.3	Parameters . . . . .	4
2.1.4	Events . . . . .	4
2.2	Compared Parameters . . . . .	5
2.3	Aspect . . . . .	6
2.4	Star Slots . . . . .	8
2.5	FID Slots . . . . .	8
<b>A</b>	<b>Summary</b>	<b>9</b>
A.1	Status . . . . .	9
A.2	Comments . . . . .	9

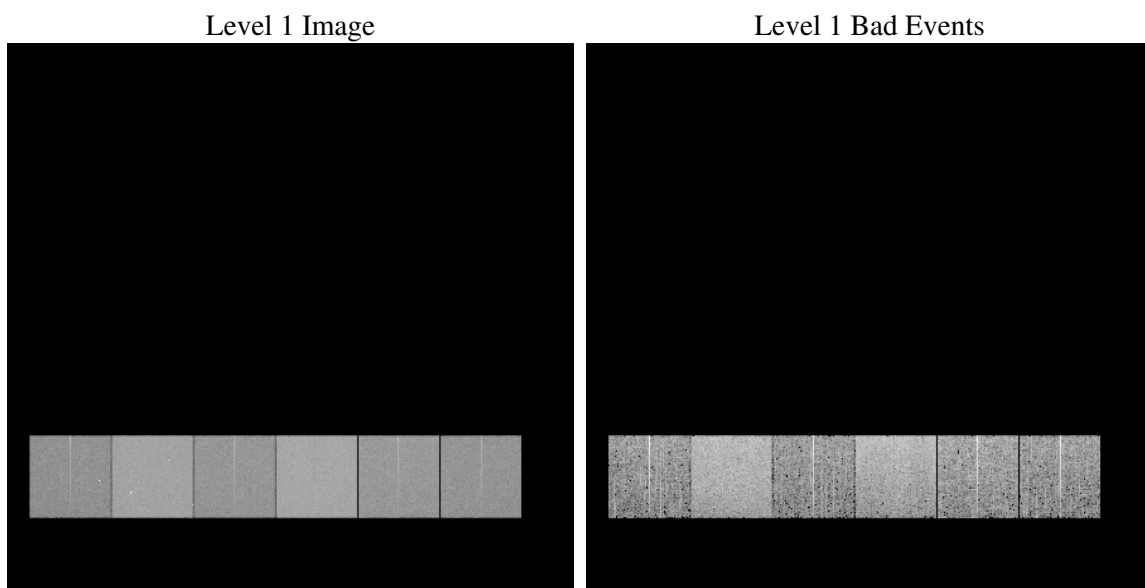
# 1 Front

seq_num	&#160
obs_id	60459
title	ACIS-456789 diagnostics
observer	CHANDRA engineering request/realtime commanding
object	&#160
dtcycle	0
cycle	P
ra_targ	0.0
dec_targ	0.0
ra_nom	133.19826652175
dec_nom	-6.6714099468066
roll_nom	60.523341435724
revision	2
ontime	7800.174608171
livetime	7701.4041005811
ontime4	4526.9150804877
ontime5	7800.2156481743
ontime6	4922.2737168074
ontime7	7800.174608171
ontime8	5097.3697853386
ontime9	4792.5117173791
l2events	1132640

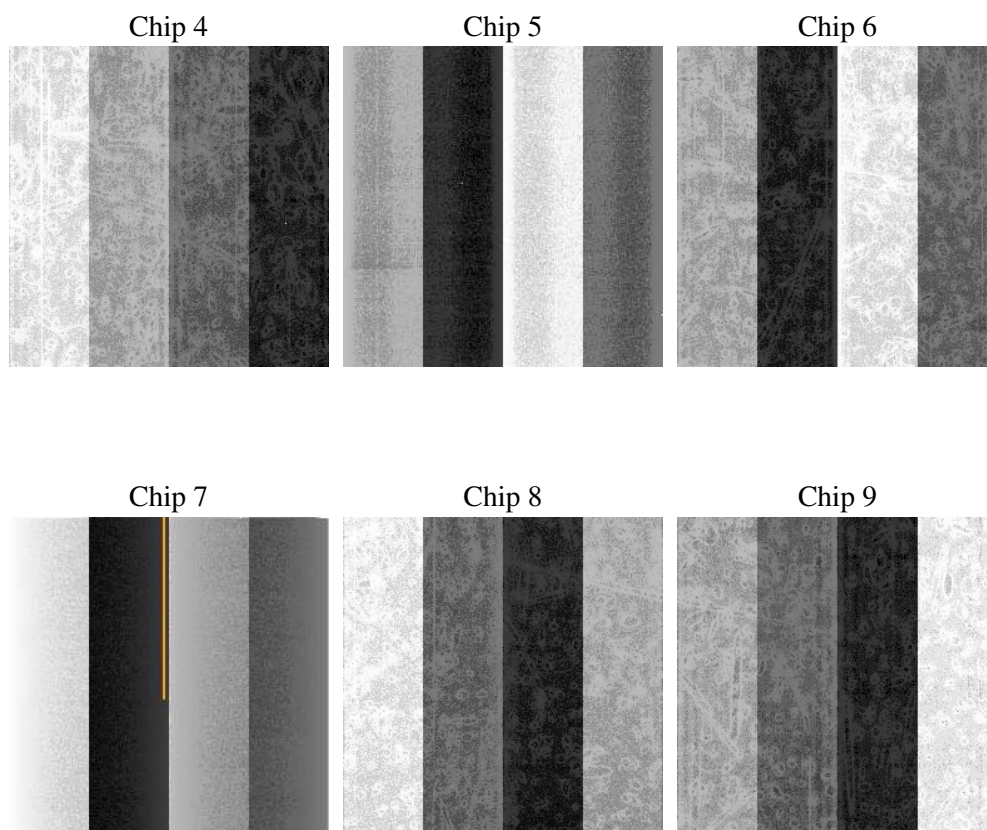
## 2 OBI

### 2.1 OBI

#### 2.1.1 Images



#### 2.1.2 Bias



### 2.1.3 Parameters

obi_num	1
ascdsver	7.6.8
caldbver	3.2.2
date	2006-06-23T22:36:49
revision	2

sched_exp_time	0.0
ontime	7801.0919881165
ontime4	4527.7093404233
ontime5	7801.0919881165
ontime6	4923.1090167463
ontime7	7801.0919881165
ontime8	5098.1230053008
ontime9	4793.4701373279
l1events	1416277

### 2.1.4 Events

	ccd 4	ccd 5	ccd 6	ccd 7	ccd 8	ccd 9
level 1 events	180042	295722	205516	320851	219273	194873
rejected events	29501	52394	28800	48042	34345	29325
rejected %	16%	17%	14%	14%	15%	15%

	ccd 4	ccd 5	ccd 6	ccd 7	ccd 8	ccd 9
grade 0 events	87845	30577	96942	49252	101206	91696
	48%	10%	47%	15%	46%	47%
grade 1 events	559	88	394	123	472	427
	0%	0%	0%	0%	0%	0%
grade 2 events	23982	114377	30412	82347	32346	28479
	13%	38%	14%	25%	14%	14%
grade 3 events	10063	8472	11092	20056	12071	10632
	5%	2%	5%	6%	5%	5%
grade 4 events	9811	8251	10900	20061	11920	10521
	5%	2%	5%	6%	5%	5%
grade 5 events	1906	5636	2167	5985	2547	2254
	1%	1%	1%	1%	1%	1%
grade 6 events	18840	81651	27370	101101	27385	24220
	10%	27%	13%	31%	12%	12%
grade 7 events	27036	46670	26239	41926	31326	26644
	15%	15%	12%	13%	14%	13%

## 2.2 Compared Parameters

Parameter	Planned	Actual	Parameter	Planned	Actual
Instrument	ACIS	ACIS	Obspar format version number	6	6
Detector	ACIS-456789	ACIS-456789	Obspar file type	PREDICTED	ACTUAL
Grating	NONE	NONE	Obspar update status	NONE	UPDATED
Data mode	FAINT	FAINT	On-chip summing requested	N	N
Observation mode	SECONDARY	SECONDARY	Subarray requested	NONE	NONE
Pointing RA	0	133.1982665217503	Alternating exposures requested	N	N
Pointing Dec	0	-6.671409946806594	Primary exposure time	0.000000	3.2
Pointing Roll	0.0	60.52334143572355			
SIM focus pos (mm)	-0.684267	-0.6828225247311905			
SIM defocus (mm)	0	0.8505141146731063			
SIM translation stage pos (mm)	-190.132523	250.466033080201			
SIM translation stage offset (mm)	0	-0.01005468664627074			
Observation start time	187333545.24962	187333544.2249			
Observation start date	2003-12-09T05:05:45	2003-12-09T05:05:44			
Observation end time	187346388.500177	187346387.47545			
Observation end date	2003-12-09T08:39:49	2003-12-09T08:39:47			
Read mode	TIMED	TIMED			

## 2.3 Aspect



## **2.4 Star Slots**

## **2.5 FID Slots**



## A Summary

### A.1 Status

V&V Scientist	Jen Lauer
V&V Date (YYYY-MM-DD)	2006.06.26
V&V Edition	1
V&V Disposition and Status	OK
V&V Charge Time	7.8001746

### A.2 Comments