

V&V Reference Report

L2 ASCDS Version : 8.4.5

Observation 60451 - L2 Version 3
Chandra X-Ray Center

L2 Processing Date : Nov 9 2012

Contents

1	Front	2
2	OBI	3
2.1	OBI	3
2.1.1	Images	3
2.1.2	Bias	3
2.1.3	Parameters	4
2.1.4	Events	4
2.2	Compared Parameters	5
2.3	Star Slots	6
2.4	FID Slots	6
A	Summary	7
A.1	Status	7
A.2	Comments	7

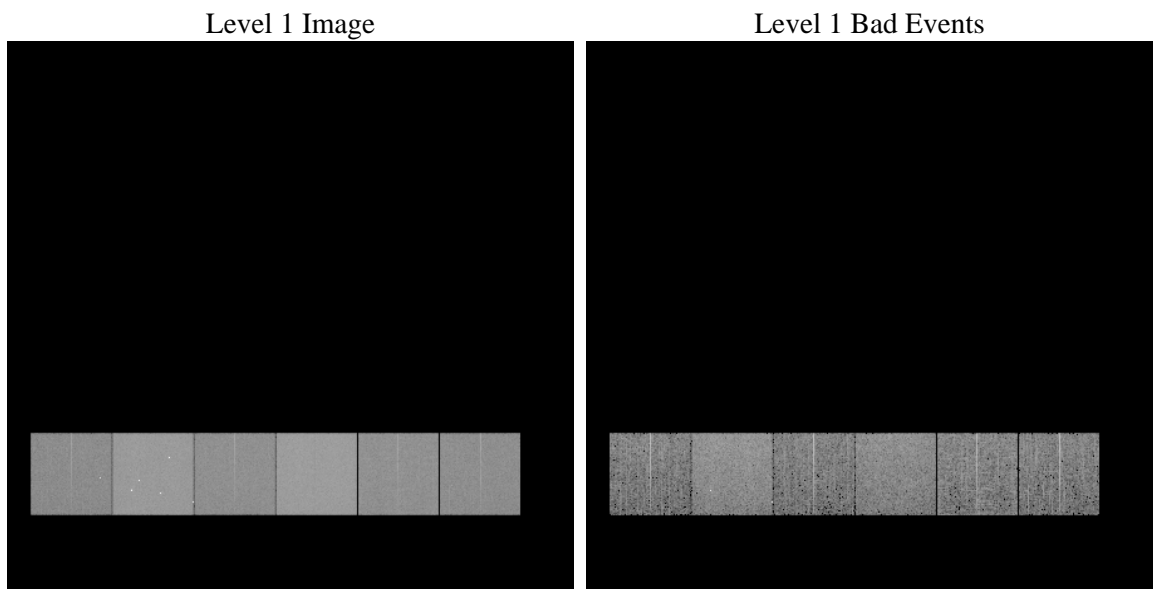
1 Front

seq_num	 	Sequence number
obs_id	60451	Observation id
title	ACIS-456789 diagnostics	Proposal title
observer	CHANDRA engineering request/realtime commanding	Principal investig
object	 	Source name
dtcycle	0	
cycle	P	events from which exps? Prim/Second/Both
ra_targ	0.0	Observer's specified target RA [deg]
dec_targ	0.0	Observer's specified target Dec [deg]
ra_nom	211.00341995068	Nominal RA [deg]
dec_nom	26.028441557792	Nominal Dec [deg]
roll_nom	50.991069480887	Nominal Roll [deg]
revision	3	Processing version of data
ontime	7801.5999709368	Sum of GTIs [s]
livetime	7702.8114145452	Livetime [s]
ontime4	4468.9188811481	Sum of GTIs [s]
ontime5	7801.5999709368	Sum of GTIs [s]
ontime6	4903.1696290672	Sum of GTIs [s]
ontime7	7801.5999709368	Sum of GTIs [s]
ontime8	4958.3480829597	Sum of GTIs [s]
ontime9	4724.7936228514	Sum of GTIs [s]
l2events	1132569	Number of level 2 events

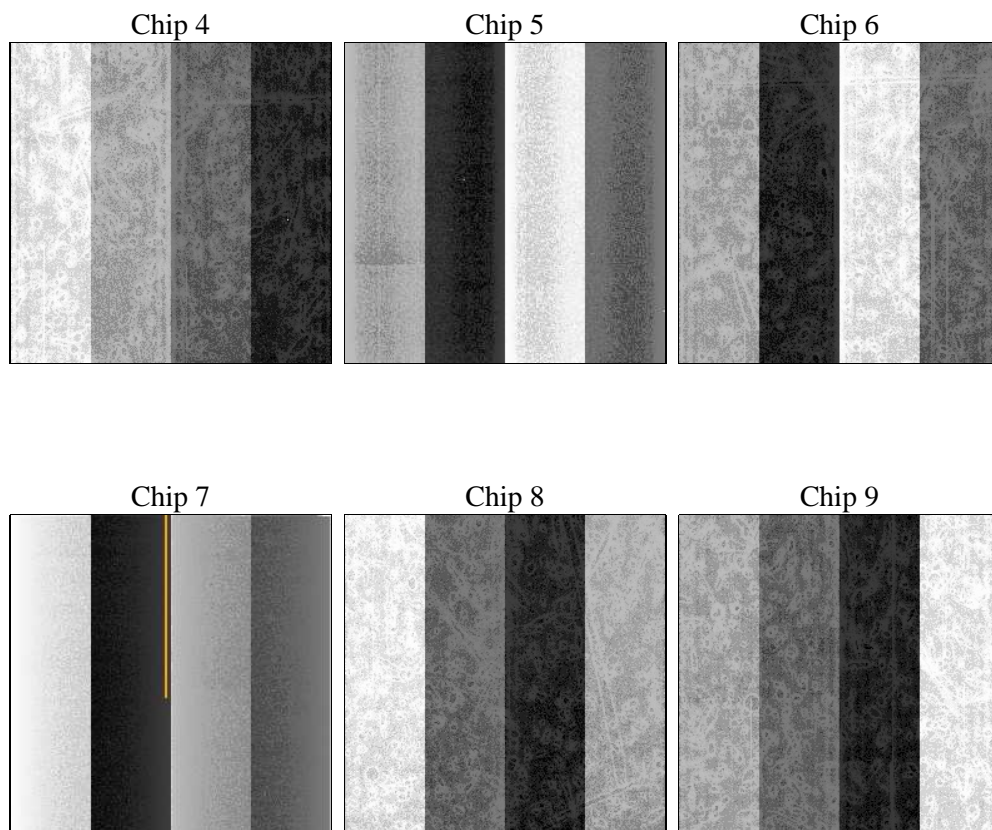
2 OBI

2.1 OBI

2.1.1 Images



2.1.2 Bias



2.1.3 Parameters

obi_num	0	Obi number	sched_exp_time	0.0	[s] Scheduled observation exposure time
ascdsver	8.4.5	Processing system revision	ontime	7801.5999709368	Sum of GTIs [s]
caldsver	4.5.2	 	ontime4	4468.9188811481	Sum of GTIs [s]
date	2012-11-09T06:33:16	Date and time of file creation	ontime5	7801.5999709368	Sum of GTIs [s]
revision	3	Processing version of data	ontime6	4903.1696290672	Sum of GTIs [s]
			ontime7	7801.5999709368	Sum of GTIs [s]
			ontime8	4958.3480829597	Sum of GTIs [s]
			ontime9	4724.7936228514	Sum of GTIs [s]
			l1events	1417380	Number of level 1 events

2.1.4 Events

	ccd 4	ccd 5	ccd 6	ccd 7	ccd 8	ccd 9		ccd 4	ccd 5	ccd 6	ccd 7	ccd 8	ccd 9
level 1 events	179317	304779	204726	322135	213739	192684	grade 0 events	87794	61026	95428	70375	98193	89464
rejected events	30301	49086	30224	39743	34635	31006		48%	20%	46%	21%	45%	46%
rejected %	16%	16%	14%	12%	16%	16%	grade 1 events	573	756	392	158	442	439
								0%	0%	0%	0%	0%	0%
							grade 2 events	23016	93240	30203	62295	31189	27741
								12%	30%	14%	19%	14%	14%
							grade 3 events	9911	14871	10722	28220	11572	10225
								5%	4%	5%	8%	5%	5%
							grade 4 events	9766	14457	10687	28040	11705	10227
								5%	4%	5%	8%	5%	5%
							grade 5 events	1940	8364	2272	7398	2500	2227
								1%	2%	1%	2%	1%	1%
							grade 6 events	18529	72230	27462	93581	26445	24021
								10%	23%	13%	29%	12%	12%
							grade 7 events	27788	39835	27560	32068	31693	28340
								15%	13%	13%	9%	14%	14%

2.2 Compared Parameters

Parameter	Planned	Actual
Instrument	ACIS	ACIS
Detector	ACIS-456789	ACIS-456789
Grating	NONE	NONE
Data mode	FAINT	FAINT
Observation mode	SECONDARY	SECONDARY
[deg] Pointing RA	0	211.0034199506787
[deg] Pointing Dec	0	26.02844155779212
[deg] Pointing Roll	0.0	50.99106948088697
[mm] SIM focus pos	-0.684267	-0.7809083437167272
[mm] SIM defocus	0	0.7524282956875696
[mm] SIM translation stage pos	-190.132523	250.466033080201
[mm] SIM translation stage offset	0	-0.01005468664627074
[s] Observation start time (MET)	188018977.129364	188018976.10465
Observation start date	2003-12-17T03:29:37	2003-12-17T03:29:36
[s] Observation end time (MET)	188033890.880012	188033889.8553
Observation end date	2003-12-17T07:38:11	2003-12-17T07:38:09
Read mode	TIMED	TIMED

Parameter	Planned	Actual
Obspar format version number	7	7
Obspar file type	PREDICTED	ACTUAL
Obspar update status	NONE	UPDATED
On-chip summing requested	N	N
Subarray requested	NONE	NONE
Alternating exposures requested	N	N
[s] Primary exposure time	0.000000	3.2

2.3 Star Slots

2.4 FID Slots

A Summary

A.1 Status

V&V Scientist	Beth Sundheim
V&V Date (YYYY-MM-DD)	2012.12.14
V&V Edition	1
V&V Disposition and Status	OK
V&V Charge Time	7.8015999709368

A.2 Comments