

V&V Reference Report

L2 ASCDS Version : 7.6.8

Observation 60451 - L2 Version 001
Chandra X-Ray Center

L2 Processing Date : Jun 23 2006

Contents

1	Front	2
2	OBI	3
2.1	OBI	3
2.1.1	Images	3
2.1.2	Bias	3
2.1.3	Parameters	4
2.1.4	Events	4
2.2	Compared Parameters	5
2.3	Aspect	6
2.4	Star Slots	8
2.5	FID Slots	8
A	Summary	9
A.1	Status	9
A.2	Comments	9

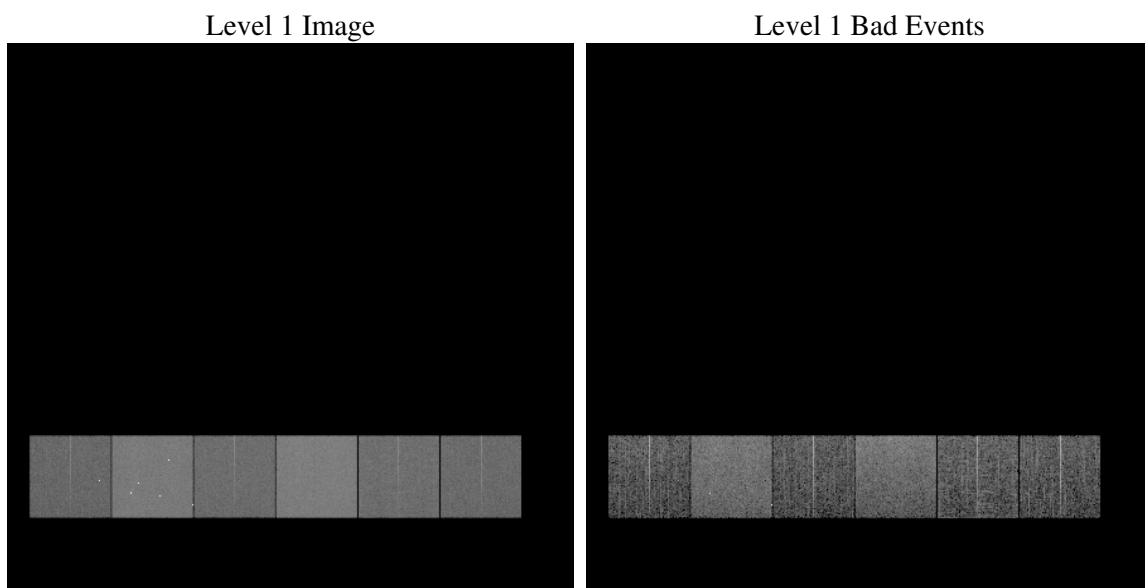
1 Front

seq_num	
obs_id	60451
title	ACIS-456789 diagnostics
observer	CHANDRA engineering request/realtime commanding
object	
dtcycle	0
cycle	P
ra_targ	0.0
dec_targ	0.0
ra_nom	211.00340046448
dec_nom	26.02841999369
roll_nom	50.991078024225
revision	2
ontime	7801.5999709368
livetime	7702.8114145452
ontime4	4467.3188811541
ontime5	7801.5999709368
ontime6	4901.5696290731
ontime7	7801.5999709368
ontime8	4956.7480829656
ontime9	4723.1936228573
l2events	1115323

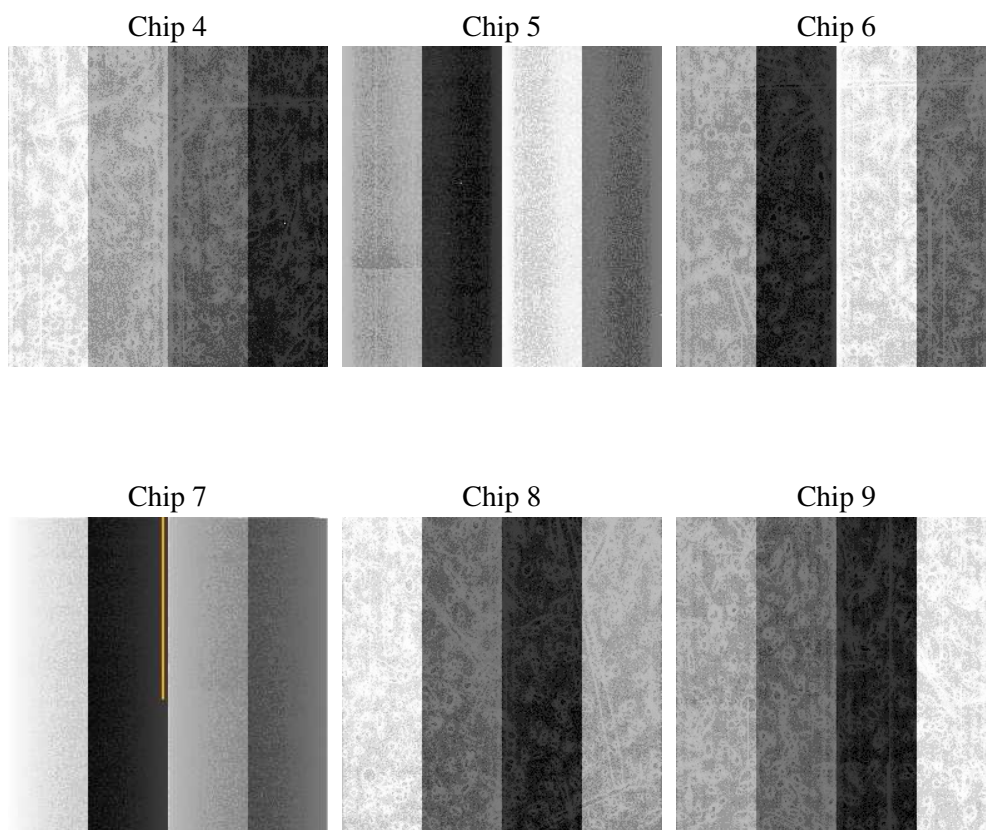
2 OBI

2.1 OBI

2.1.1 Images



2.1.2 Bias



2.1.3 Parameters

obi_num	0
ascdsver	7.6.8
caldbver	3.2.2
date	2006-06-23T23:59:44
revision	2

sched_exp_time	0.0
ontime	7804.3287988901
ontime4	4469.3706063628
ontime5	7804.3287988901
ontime6	4903.6623942852
ontime7	7804.3287988901
ontime8	4958.7587682009
ontime9	4725.4095080793
l1events	1417380

2.1.4 Events

	ccd 4	ccd 5	ccd 6	ccd 7	ccd 8	ccd 9
level 1 events	179317	304779	204726	322135	213739	192684
rejected events	30423	55503	30357	50459	34741	31123
rejected %	16%	18%	14%	15%	16%	16%

	ccd 4	ccd 5	ccd 6	ccd 7	ccd 8	ccd 9
grade 0 events	87749	33802	95367	48383	98164	89425
	48%	11%	46%	15%	45%	46%
grade 1 events	568	632	390	102	442	437
	0%	0%	0%	0%	0%	0%
grade 2 events	23062	116833	30266	82667	31217	27781
	12%	38%	14%	25%	14%	14%
grade 3 events	9900	8062	10706	19741	11559	10210
	5%	2%	5%	6%	5%	5%
grade 4 events	9750	7707	10672	19569	11689	10210
	5%	2%	5%	6%	5%	5%
grade 5 events	1942	6153	2268	6214	2496	2217
	1%	2%	1%	1%	1%	1%
grade 6 events	18549	82951	27483	101425	26472	24055
	10%	27%	13%	31%	12%	12%
grade 7 events	27797	48639	27574	44034	31700	28349
	15%	15%	13%	13%	14%	14%

2.2 Compared Parameters

Parameter	Planned	Actual	Parameter	Planned	Actual
Instrument	ACIS	ACIS	Obspar format version number	6	6
Detector	ACIS-456789	ACIS-456789	Obspar file type	PREDICTED	ACTUAL
Grating	NONE	NONE	Obspar update status	NONE	UPDATED
Data mode	FAINT	FAINT	On-chip summing requested	N	N
Observation mode	SECONDARY	SECONDARY	Subarray requested	NONE	NONE
Pointing RA	0	211.0034004644801	Alternating exposures requested	N	N
Pointing Dec	0	26.02841999368992	Primary exposure time	0.000000	3.2
Pointing Roll	0.0	50.99107802422452			
SIM focus pos (mm)	-0.684267	-0.7809083437167272			
SIM defocus (mm)	0	0.7524282956875696			
SIM translation stage pos (mm)	-190.132523	250.466033080201			
SIM translation stage offset (mm)	0	-0.01005468664627074			
Observation start time	188018977.129364	188018976.10465			
Observation start date	2003-12-17T03:29:37	2003-12-17T03:29:36			
Observation end time	188033890.880012	188033889.8553			
Observation end date	2003-12-17T07:38:11	2003-12-17T07:38:09			
Read mode	TIMED	TIMED			

2.3 Aspect

2.4 Star Slots

2.5 FID Slots

A Summary

A.1 Status

V&V Scientist	Jen Lauer
V&V Date (YYYY-MM-DD)	2006.06.26
V&V Edition	1
V&V Disposition and Status	OK
V&V Charge Time	7.80159997

A.2 Comments