

V&V Reference Report

L2 ASCDS Version : 7.6.8

Observation 60446 - L2 Version 001
Chandra X-Ray Center

L2 Processing Date : Jun 22 2006

Contents

1	Front	2
2	OBI	3
2.1	OBI	3
2.1.1	Images	3
2.1.2	Bias	3
2.1.3	Parameters	4
2.1.4	Events	4
2.2	Compared Parameters	5
2.3	Aspect	6
2.4	Star Slots	8
2.5	FID Slots	8
A	Summary	9
A.1	Status	9
A.2	Comments	9

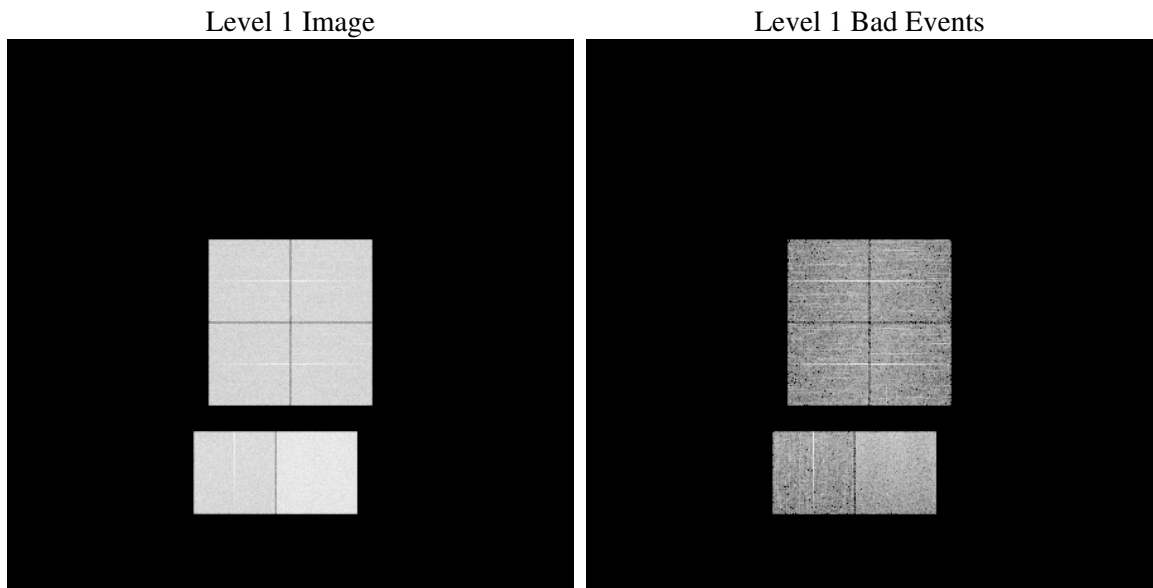
1 Front

seq_num	
obs_id	60446
title	ACIS-012367 diagnostics
observer	CHANDRA engineering request/realtime commanding
object	
dtcycle	0
cycle	P
ra_targ	0.0
dec_targ	0.0
ra_nom	71.030058764632
dec_nom	-19.995600373778
roll_nom	335.95793600144
revision	2
ontime	7806.5450748503
livetime	7707.6939005755
ontime0	5174.9174651504
ontime1	5298.1156847775
ontime2	5019.4326743782
ontime3	5139.1846429706
ontime6	5505.6200611293
ontime7	7806.5450748503
l2events	1148799

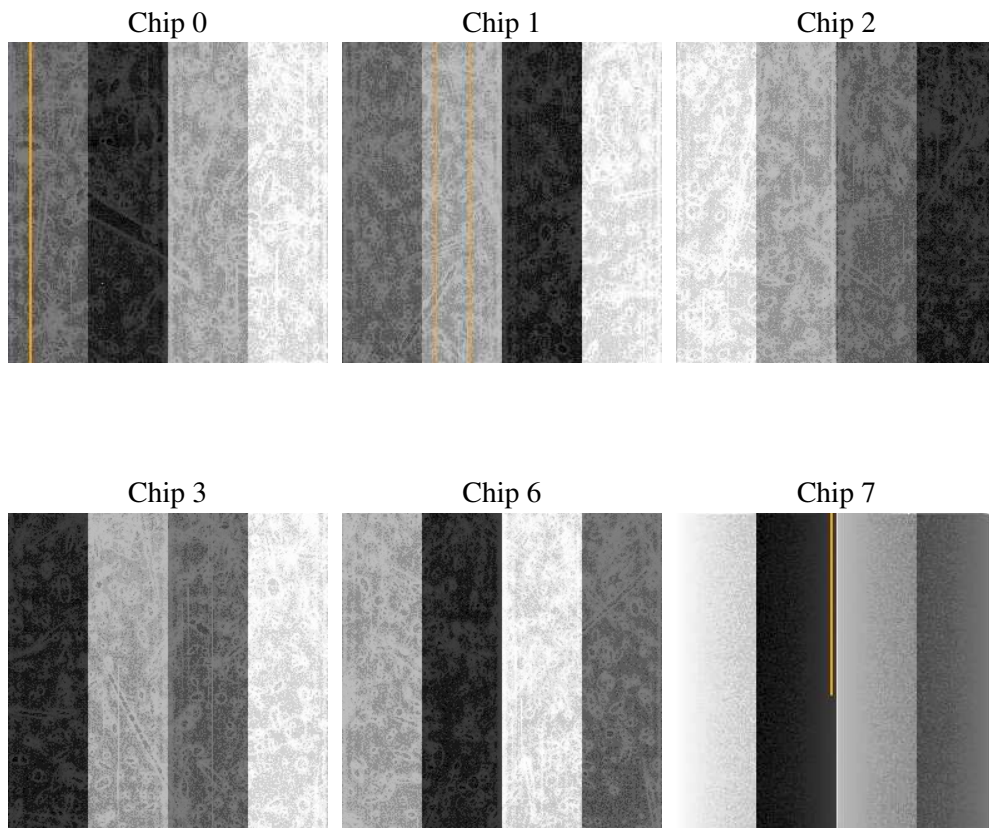
2 OBI

2.1 OBI

2.1.1 Images



2.1.2 Bias



2.1.3 Parameters

obi_num	0
ascdsver	7.6.8
caldbver	3.2.2
date	2006-06-22T17:29:40
revision	2

sched_exp_time	0.0
ontime	7807.5757692754
ontime0	5175.9071195722
ontime1	5299.064299196
ontime2	5020.3402487934
ontime3	5140.256377399
ontime6	5506.486595571
ontime7	7807.5757692754
l1events	1420179

2.1.4 Events

	ccd 0	ccd 1	ccd 2	ccd 3	ccd 6	ccd 7
level 1 events	212419	218144	208266	215599	235079	330672
rejected events	31832	32514	32173	34033	34329	51695
rejected %	14%	14%	15%	15%	14%	15%

	ccd 0	ccd 1	ccd 2	ccd 3	ccd 6	ccd 7
grade 0 events	99653	101625	98472	102364	108783	49297
	46%	46%	47%	47%	46%	14%
grade 1 events	534	428	603	589	453	125
	0%	0%	0%	0%	0%	0%
grade 2 events	31603	32948	29729	30726	34534	85185
	14%	15%	14%	14%	14%	25%
grade 3 events	11445	11864	11532	11707	12536	19883
	5%	5%	5%	5%	5%	6%
grade 4 events	11769	11811	11519	11818	12474	19699
	5%	5%	5%	5%	5%	5%
grade 5 events	2196	2245	1988	2281	2558	6370
	1%	1%	0%	1%	1%	1%
grade 6 events	26117	27382	24841	24951	32423	104913
	12%	12%	11%	11%	13%	31%
grade 7 events	29102	29841	29582	31163	31318	45200
	13%	13%	14%	14%	13%	13%

2.2 Compared Parameters

Parameter	Planned	Actual	Parameter	Planned	Actual
Instrument	ACIS	ACIS	Obspar format version number	6	6
Detector	ACIS-012367	ACIS-012367	Obspar file type	PREDICTED	ACTUAL
Grating	NONE	NONE	Obspar update status	NONE	UPDATED
Data mode	FAINT	FAINT	On-chip summing requested	N	N
Observation mode	SECONDARY	SECONDARY	Subarray requested	NONE	NONE
Pointing RA	0	71.0300587646325	Alternating exposures requested	N	N
Pointing Dec	0	-19.99560037377792	Primary exposure time	0.000000	3.2
Pointing Roll	0.0	335.9579360014434			
SIM focus pos (mm)	-0.782348	-0.7809083437167272			
SIM defocus (mm)	0	0.7524282956875696			
SIM translation stage pos (mm)	-233.592463	250.466033080201			
SIM translation stage offset (mm)	0	-0.01005468664627074			
Observation start time	188476738.049267	188476737.02455			
Observation start date	2003-12-22T10:38:58	2003-12-22T10:38:57			
Observation end time	188512397.800818	188512396.7761			
Observation end date	2003-12-22T20:33:18	2003-12-22T20:33:16			
Read mode	TIMED	TIMED			

2.3 Aspect

2.4 Star Slots

2.5 FID Slots

A Summary

A.1 Status

V&V Scientist	Jen Lauer
V&V Date (YYYY-MM-DD)	2006.06.22
V&V Edition	1
V&V Disposition and Status	OK
V&V Charge Time	7.80654507

A.2 Comments