

V&V Reference Report

L2 ASCDS Version : 8.4.5

Observation 60444 - L2 Version 3
Chandra X-Ray Center

L2 Processing Date : Nov 9 2012

Contents

1	Front	2
2	OBI	3
2.1	OBI	3
2.1.1	Images	3
2.1.2	Bias	3
2.1.3	Parameters	4
2.1.4	Events	4
2.2	Compared Parameters	5
2.3	Star Slots	6
2.4	FID Slots	6
A	Summary	7
A.1	Status	7
A.2	Comments	7

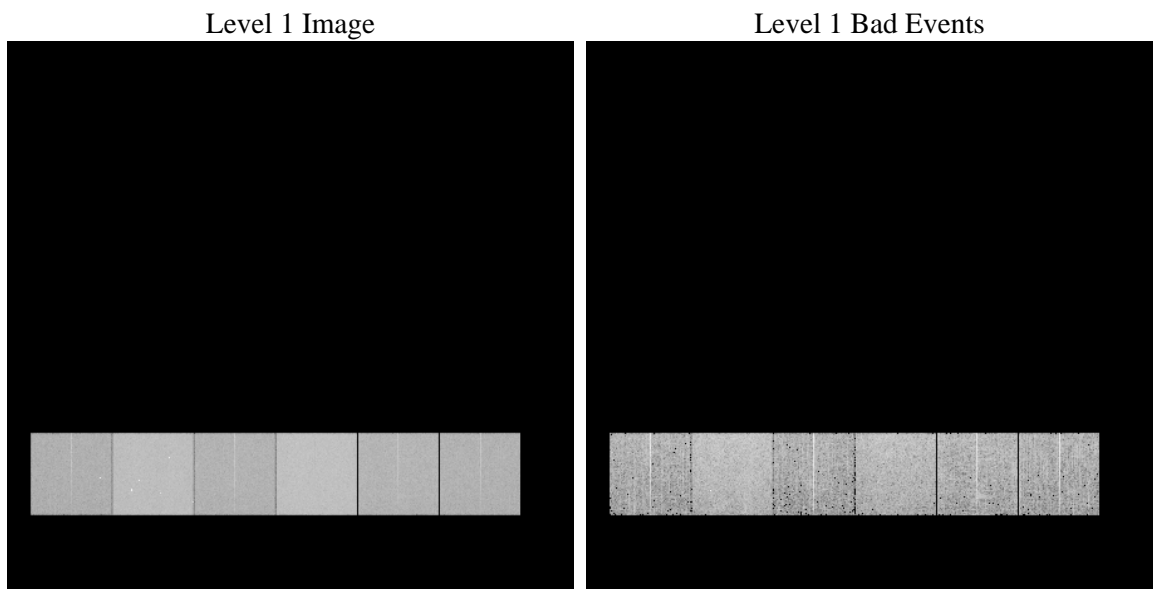
1 Front

seq_num	 	Sequence number
obs_id	60444	Observation id
title	ACIS-456789 diagnostics	Proposal title
observer	CHANDRA engineering request/realtime commanding	Principal investig
object	 	Source name
dtcycle	0	
cycle	P	events from which exps? Prim/Second/Both
ra_targ	0.0	Observer's specified target RA [deg]
dec_targ	0.0	Observer's specified target Dec [deg]
ra_nom	335.0232025344	Nominal RA [deg]
dec_nom	-15.017811210099	Nominal Dec [deg]
roll_nom	288.6525175614	Nominal Roll [deg]
revision	3	Processing version of data
ontime	7804.3264192045	Sum of GTIs [s]
livetime	7705.5033388833	Livetime [s]
ontime4	4495.1796570122	Sum of GTIs [s]
ontime5	7804.2890715599	Sum of GTIs [s]
ontime6	4838.7636736035	Sum of GTIs [s]
ontime7	7804.3264192045	Sum of GTIs [s]
ontime8	5003.9714835584	Sum of GTIs [s]
ontime9	4744.8538436592	Sum of GTIs [s]
l2events	1135255	Number of level 2 events

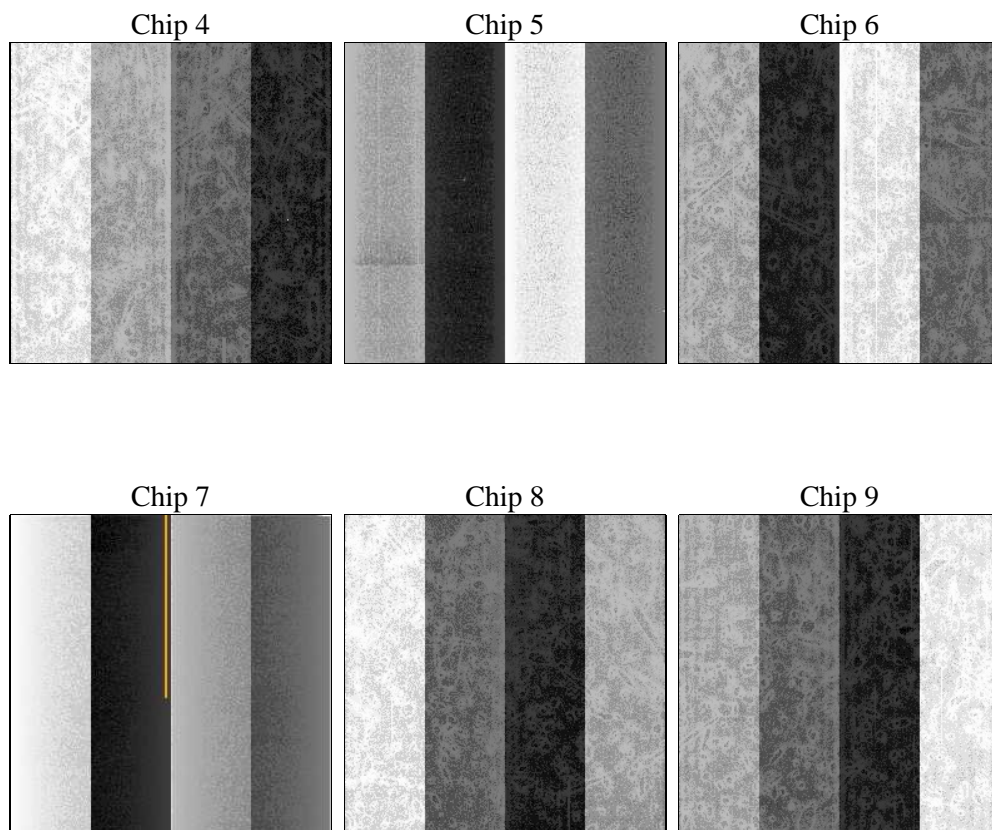
2 OBI

2.1 OBI

2.1.1 Images



2.1.2 Bias



2.1.3 Parameters

obi_num	1	Obi number	sched_exp_time	0.0	[s] Scheduled observation exposure time
ascdsver	8.4.5	Processing system revision	ontime	7804.3264192045	Sum of GTIs [s]
caldsver	4.5.2	 	ontime4	4495.1796570122	Sum of GTIs [s]
date	2012-11-09T15:44:49	Date and time of file creation	ontime5	7804.2890715599	Sum of GTIs [s]
revision	3	Processing version of data	ontime6	4838.7636736035	Sum of GTIs [s]
			ontime7	7804.3264192045	Sum of GTIs [s]
			ontime8	5003.9714835584	Sum of GTIs [s]
			ontime9	4744.8538436592	Sum of GTIs [s]
			l1events	1417037	Number of level 1 events

2.1.4 Events

	ccd 4	ccd 5	ccd 6	ccd 7	ccd 8	ccd 9		ccd 4	ccd 5	ccd 6	ccd 7	ccd 8	ccd 9
level 1 events	180965	298789	202809	324032	215820	194622	grade 0 events	87218	59837	94251	71179	99073	90141
rejected events	31620	47589	30291	40562	35223	31900		48%	20%	46%	21%	45%	46%
rejected %	17%	15%	14%	12%	16%	16%	grade 1 events	552	291	393	192	497	479
								0%	0%	0%	0%	0%	0%
							grade 2 events	23817	88304	29764	62708	31730	27877
								13%	29%	14%	19%	14%	14%
							grade 3 events	9698	15755	10661	28518	11679	10299
								5%	5%	5%	8%	5%	5%
							grade 4 events	9836	15584	10843	28327	11527	10282
								5%	5%	5%	8%	5%	5%
							grade 5 events	2055	8080	2059	7530	2638	2342
								1%	2%	1%	2%	1%	1%
							grade 6 events	18776	71720	26999	92738	26588	24123
								10%	24%	13%	28%	12%	12%
							grade 7 events	29013	39218	27839	32840	32088	29079
								16%	13%	13%	10%	14%	14%

2.2 Compared Parameters

Parameter	Planned	Actual	Parameter	Planned	Actual
Instrument	ACIS	ACIS	Obspar format version number	7	7
Detector	ACIS-456789	ACIS-456789	Obspar file type	PREDICTED	ACTUAL
Grating	NONE	NONE	Obspar update status	NONE	UPDATED
Data mode	FAINT	FAINT	On-chip summing requested	N	N
Observation mode	SECONDARY	SECONDARY	Subarray requested	NONE	NONE
[deg] Pointing RA	0	335.0232025344048	Alternating exposures requested	N	N
[deg] Pointing Dec	0	-15.01781121009859	[s] Primary exposure time	0.000000	3.2
[deg] Pointing Roll	0.0	288.6525175614005			
[mm] SIM focus pos	-0.684267	-0.6828225247311905			
[mm] SIM defocus	0	0.8505141146731063			
[mm] SIM translation stage pos	-190.132523	250.466033080201			
[mm] SIM translation stage offset	0	-0.01005468664627074			
[s] Observation start time (MET)	188704312.65917	188704311.63445			
Observation start date	2003-12-25T01:51:53	2003-12-25T01:51:51			
[s] Observation end time (MET)	188719392.459826	188719391.4351			
Observation end date	2003-12-25T06:03:12	2003-12-25T06:03:11			
Read mode	TIMED	TIMED			

2.3 Star Slots

2.4 FID Slots

A Summary

A.1 Status

V&V Scientist	Beth Sundheim
V&V Date (YYYY-MM-DD)	2012.12.17
V&V Edition	1
V&V Disposition and Status	OK
V&V Charge Time	7.8043264192045

A.2 Comments