

V&V Reference Report

L2 ASCDS Version : 7.6.8

Observation 60436 - L2 Version 001
Chandra X-Ray Center

L2 Processing Date : Jun 22 2006

Contents

1	Front	2
2	OBI	3
2.1	OBI	3
2.1.1	Images	3
2.1.2	Bias	3
2.1.3	Parameters	4
2.1.4	Events	4
2.2	Compared Parameters	5
2.3	Aspect	6
2.4	Star Slots	8
2.5	FID Slots	8
A	Summary	9
A.1	Status	9
A.2	Comments	9

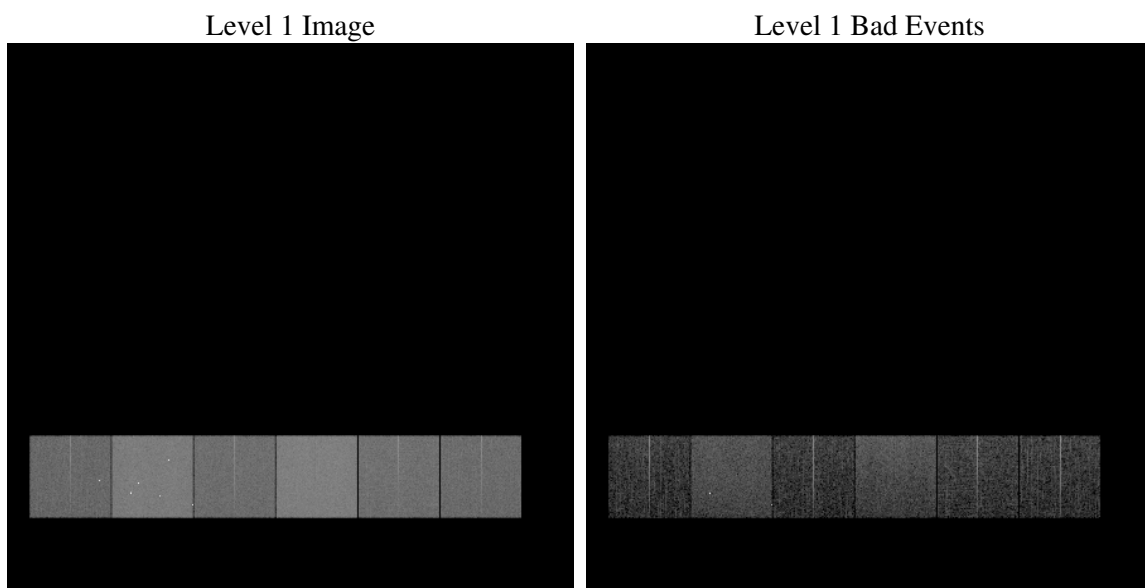
1 Front

seq_num	
obs_id	60436
title	ACIS-456789 diagnostics
observer	CHANDRA engineering request/realtime commanding
object	
dtcycle	0
cycle	P
ra_targ	0.0
dec_targ	0.0
ra_nom	128.95917403106
dec_nom	49.009991287826
roll_nom	126.63884720339
revision	2
ontime	7803.4454062879
livetime	7704.6334818828
ontime4	4361.6404271424
ontime5	7803.4864462912
ontime6	4821.8208656311
ontime7	7803.4454062879
ontime8	4958.0247952342
ontime9	4630.4796208143
l2events	1111581

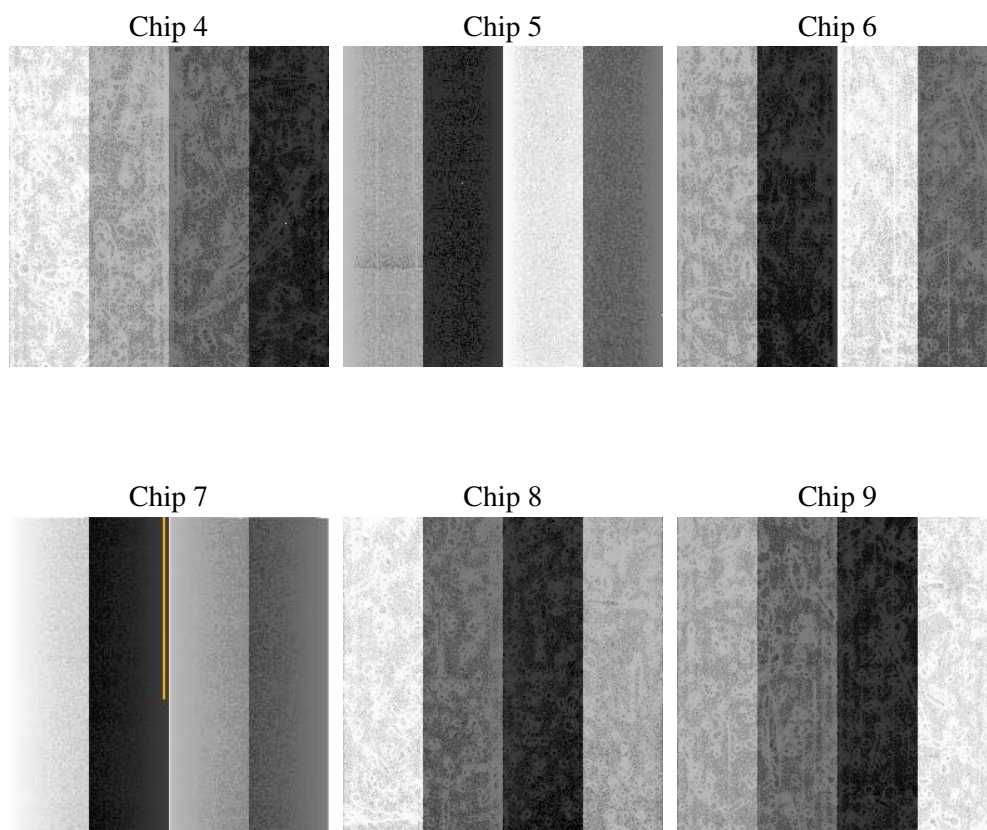
2 OBI

2.1 OBI

2.1.1 Images



2.1.2 Bias



2.1.3 Parameters

obi_num	0
ascdsver	7.6.8
caldbver	3.2.2
date	2006-06-22T19:26:53
revision	2

sched_exp_time	0.0
ontime	7804.3515592813
ontime4	4362.4234601259
ontime5	7804.3515592813
ontime6	4822.6449386179
ontime7	7804.3515592813
ontime8	4958.7667882442
ontime9	4631.4268138111
l1events	1417065

2.1.4 Events

	ccd 4	ccd 5	ccd 6	ccd 7	ccd 8	ccd 9
level 1 events	176230	308102	203568	323785	214567	190813
rejected events	30814	58065	31136	52591	35294	31708
rejected %	17%	18%	15%	16%	16%	16%

	ccd 4	ccd 5	ccd 6	ccd 7	ccd 8	ccd 9
grade 0 events	84821	33113	94155	47270	98317	88049
	48%	10%	46%	14%	45%	46%
grade 1 events	616	295	449	126	457	507
	0%	0%	0%	0%	0%	0%
grade 2 events	22755	116561	29821	82977	31253	27057
	12%	37%	14%	25%	14%	14%
grade 3 events	9616	8067	10714	19342	11463	10032
	5%	2%	5%	5%	5%	5%
grade 4 events	9555	7939	10578	18926	11363	10171
	5%	2%	5%	5%	5%	5%
grade 5 events	1910	6294	2254	6541	2675	2257
	1%	2%	1%	2%	1%	1%
grade 6 events	18669	84357	27164	102679	26877	23796
	10%	27%	13%	31%	12%	12%
grade 7 events	28288	51476	28433	45924	32162	28944
	16%	16%	13%	14%	14%	15%

2.2 Compared Parameters

Parameter	Planned	Actual	Parameter	Planned	Actual
Instrument	ACIS	ACIS	Obspar format version number	6	6
Detector	ACIS-456789	ACIS-456789	Obspar file type	PREDICTED	ACTUAL
Grating	NONE	NONE	Obspar update status	NONE	UPDATED
Data mode	FAINT	FAINT	On-chip summing requested	N	N
Observation mode	SECONDARY	SECONDARY	Subarray requested	NONE	NONE
Pointing RA	0	128.9591740310607	Alternating exposures requested	N	N
Pointing Dec	0	49.00999128782573	Primary exposure time	0.000000	3.2
Pointing Roll	0.0	126.6388472033869			
SIM focus pos (mm)	-0.684267	-0.7809083437167272			
SIM defocus (mm)	0	0.7524282956875696			
SIM translation stage pos (mm)	-190.132523	250.466033080201			
SIM translation stage offset (mm)	0	-0.01005468664627074			
Observation start time	189161220.779028	189161219.75431			
Observation start date	2003-12-30T08:47:01	2003-12-30T08:46:59			
Observation end time	189199611.130697	189199610.10598			
Observation end date	2003-12-30T19:26:51	2003-12-30T19:26:50			
Read mode	TIMED	TIMED			

2.3 Aspect

2.4 Star Slots

2.5 FID Slots

A Summary

A.1 Status

V&V Scientist	Jen Lauer
V&V Date (YYYY-MM-DD)	2006.06.23
V&V Edition	1
V&V Disposition and Status	OK
V&V Charge Time	7.8034454

A.2 Comments