

V&V Reference Report

L2 ASCDS Version : 7.6.8.1

Observation 62854 - L2 Version 001
Chandra X-Ray Center

L2 Processing Date : Aug 29 2006

Contents

1	Front	2
2	OBI	3
2.1	OBI	3
2.1.1	Images	3
2.1.2	Bias	3
2.1.3	Parameters	4
2.1.4	Events	4
2.2	Compared Parameters	5
2.3	Aspect	6
2.4	Star Slots	8
2.5	FID Slots	8
A	Summary	9
A.1	Status	9
A.2	Comments	9

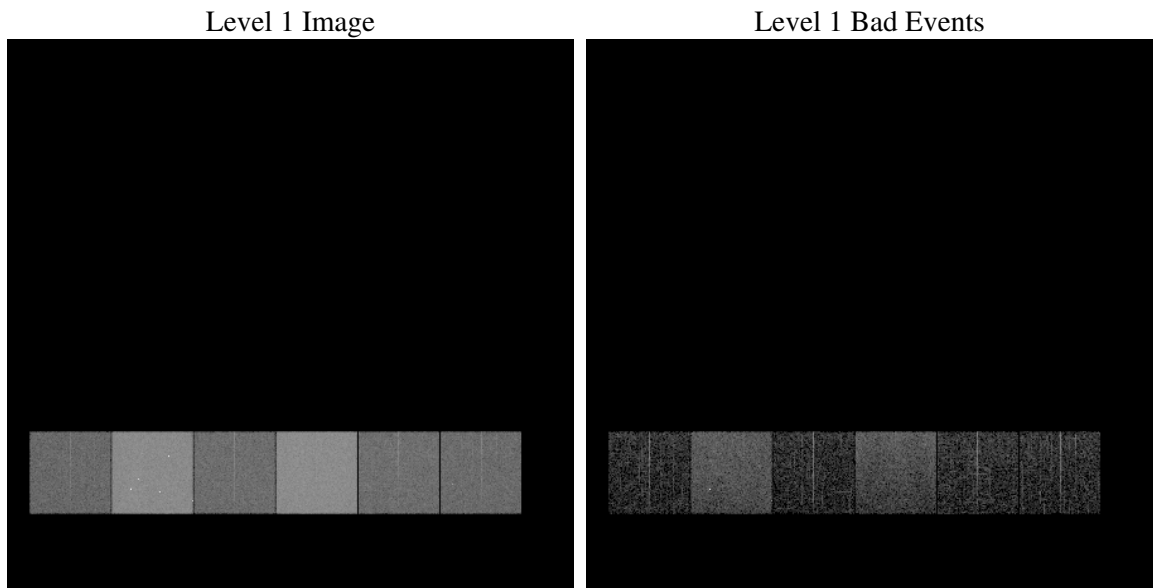
1 Front

seq_num	
obs_id	62854
title	ACIS-456789 diagnostics
observer	CHANDRA engineering request/realtime commanding
object	
dtcycle	0
cycle	P
ra_targ	0.0
dec_targ	0.0
ra_nom	96.023789843861
dec_nom	5.9838143900826
roll_nom	292.8768342953
revision	2
ontime	3856.957117781
livetime	3808.1180043749
ontime4	1469.0918792784
ontime5	4106.5112082362
ontime6	1605.1743195802
ontime7	3856.957117781
ontime8	1618.2203402966
ontime9	1553.1946593821
l2events	723259

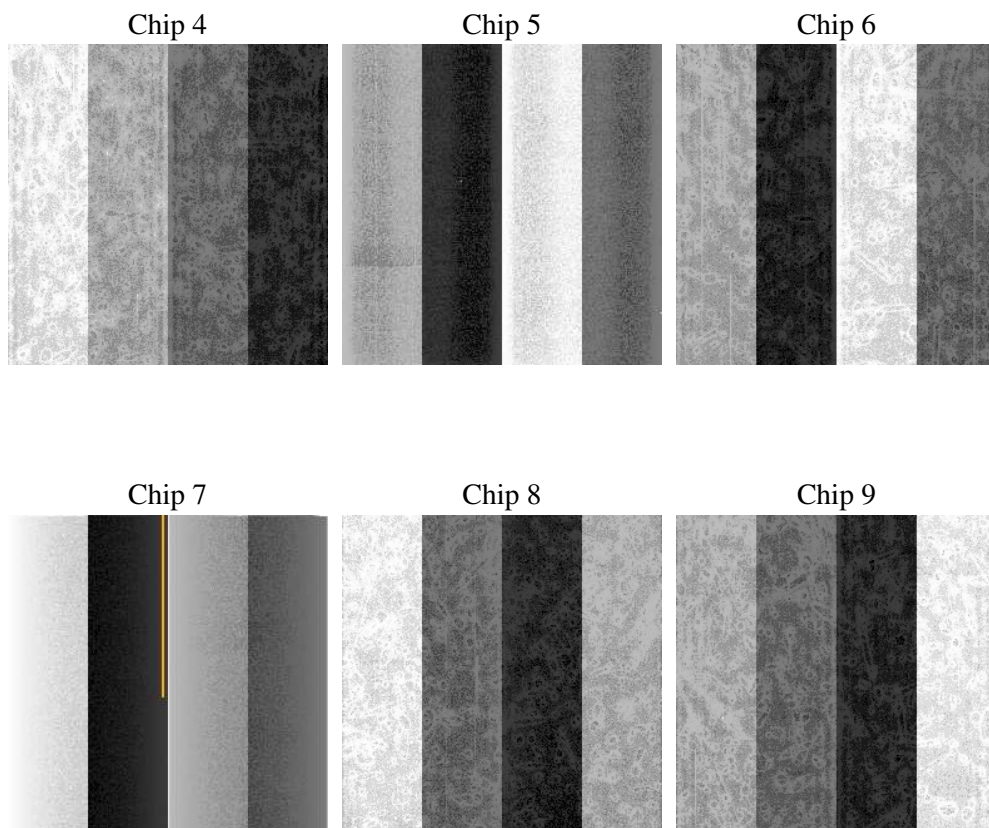
2 OBI

2.1 OBI

2.1.1 Images



2.1.2 Bias



2.1.3 Parameters

obi_num	0
ascdsver	7.6.8.1
caldsver	3.2.3
date	2006-08-30T00:16:08
revision	2

sched_exp_time	0.0
ontime	3860.039296478
ontime4	1471.4296845645
ontime5	4109.5933869332
ontime6	1607.5531648695
ontime7	3860.039296478
ontime8	1620.5171055794
ontime9	1555.6966246665
l1events	866885

2.1.4 Events

	ccd 4	ccd 5	ccd 6	ccd 7	ccd 8	ccd 9
level 1 events	89925	233405	103269	237723	105618	96945
rejected events	11621	34148	11471	26842	13095	12268
rejected %	12%	14%	11%	11%	12%	12%

	ccd 4	ccd 5	ccd 6	ccd 7	ccd 8	ccd 9
grade 0 events	44357	26729	49978	40200	51127	46687
	49%	11%	48%	16%	48%	48%
grade 1 events	230	92	260	84	228	217
	0%	0%	0%	0%	0%	0%
grade 2 events	13900	94183	16003	62877	16396	14902
	15%	40%	15%	26%	15%	15%
grade 3 events	4866	6967	5681	16017	5841	5154
	5%	2%	5%	6%	5%	5%
grade 4 events	4771	6837	5718	16091	5757	5176
	5%	2%	5%	6%	5%	5%
grade 5 events	738	4212	879	3690	941	880
	0%	1%	0%	1%	0%	0%
grade 6 events	10554	64689	14592	75858	13595	12946
	11%	27%	14%	31%	12%	13%
grade 7 events	10509	29696	10158	22906	11733	10983
	11%	12%	9%	9%	11%	11%

2.2 Compared Parameters

Parameter	Planned	Actual	Parameter	Planned	Actual
Instrument	ACIS	ACIS	Obspar format version number	6	6
Detector	ACIS-456789	ACIS-456789	Obspar file type	PREDICTED	ACTUAL
Grating	NONE	NONE	Obspar update status	NONE	UPDATED
Data mode	FAINT	FAINT	On-chip summing requested	N	N
Observation mode	SECONDARY	SECONDARY	Subarray requested	NONE	NONE
Pointing RA	0	96.02378984386074	Alternating exposures requested	N	N
Pointing Dec	0	5.983814390082642	Primary exposure time	0.000000	3.2
Pointing Roll	0.0	292.8768342952985			
SIM focus pos (mm)	-0.684267	-0.6828225247311905			
SIM defocus (mm)	0	0.8505141146731063			
SIM translation stage pos (mm)	-190.132523	250.466033080201			
SIM translation stage offset (mm)	0	-0.01005468664627074			
Observation start time	128616643.039	128616642.27035			
Observation start date	2002-01-28T14:50:43	2002-01-28T14:50:42			
Observation end time	128624625.739	128624624.97067			
Observation end date	2002-01-28T17:03:46	2002-01-28T17:03:44			
Read mode	TIMED	TIMED			

2.3 Aspect

2.4 Star Slots

2.5 FID Slots

A Summary

A.1 Status

V&V Scientist	Jen Lauer
V&V Date (YYYY-MM-DD)	2006.08.30
V&V Edition	1
V&V Disposition and Status	OK
V&V Charge Time	3.85695711

A.2 Comments