

# V&V Reference Report

## L2 ASCDS Version : 8.4.5

Observation 61360 - L2 Version 3  
Chandra X-Ray Center

L2 Processing Date : Sep 30 2012

## Contents

<b>1</b>	<b>Front</b>	<b>2</b>
<b>2</b>	<b>OBI</b>	<b>3</b>
2.1	OBI . . . . .	3
2.1.1	Images . . . . .	3
2.1.2	Bias . . . . .	3
2.1.3	Parameters . . . . .	4
2.1.4	Events . . . . .	4
2.2	Compared Parameters . . . . .	5
2.3	Star Slots . . . . .	6
2.4	FID Slots . . . . .	6
<b>A</b>	<b>Summary</b>	<b>7</b>
A.1	Status . . . . .	7
A.2	Comments . . . . .	7

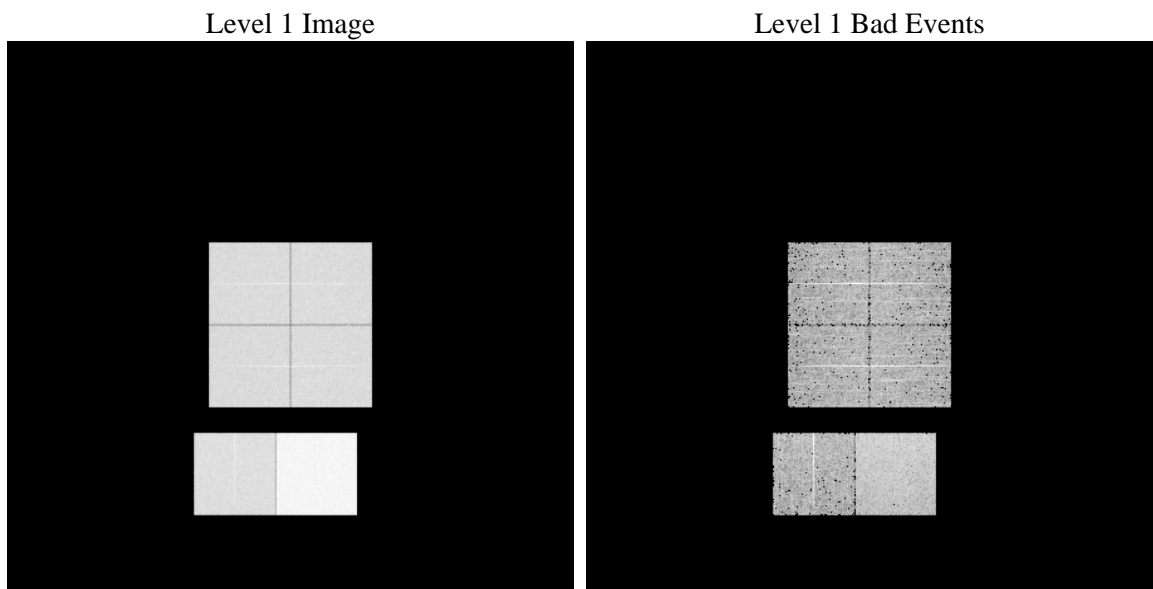
# 1 Front

seq_num	&#160	Sequence number
obs_id	61360	Observation id
title	ACIS-012367 diagnostics	Proposal title
observer	CHANDRA engineering request/realtime commanding	Principal investig
object	&#160	Source name
dtcycle	0	&#160
cycle	P	events from which exps? Prim/Second/Both
ra_targ	0.0	Observer's specified target RA [deg]
dec_targ	0.0	Observer's specified target Dec [deg]
ra_nom	354.02545439053	Nominal RA [deg]
dec_nom	11.985879029263	Nominal Dec [deg]
roll_nom	297.6685384874	Nominal Roll [deg]
revision	3	Processing version of data
ontime	8170.6279659271	Sum of GTIs [s]
livetime	8067.166554861	Livetime [s]
ontime0	3231.3121866435	Sum of GTIs [s]
ontime1	3247.5165991187	Sum of GTIs [s]
ontime2	3098.4301153272	Sum of GTIs [s]
ontime3	3198.9020658731	Sum of GTIs [s]
ontime6	3484.0203303695	Sum of GTIs [s]
ontime7	8170.6279659271	Sum of GTIs [s]
l2events	1321656	Number of level 2 events

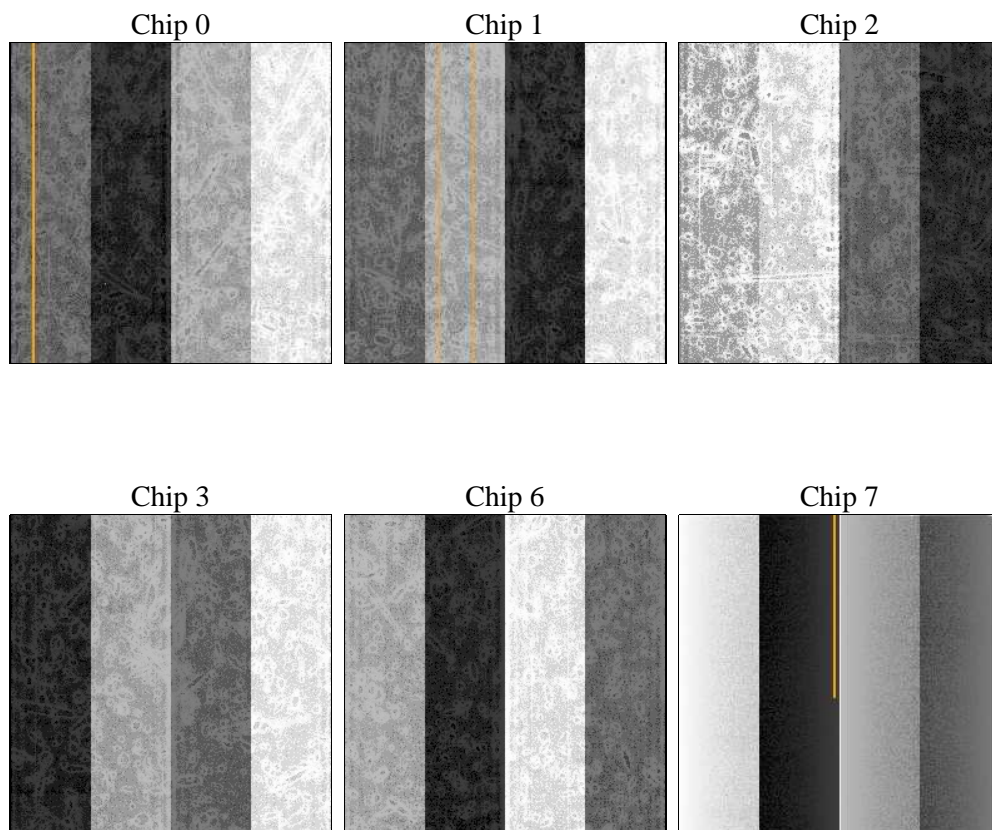
## 2 OBI

### 2.1 OBI

#### 2.1.1 Images



#### 2.1.2 Bias



### 2.1.3 Parameters

obi_num	1	Obi number	sched_exp_time	0.0	[s] Scheduled observation exposure time
ascdsver	8.4.5	Processing system revision	ontime	8170.6279659271	Sum of GTIs [s]
caldbver	4.5.2	&#160	ontime0	3231.3121866435	Sum of GTIs [s]
date	2012-09-30T04:24:49	Date and time of file creation	ontime1	3247.5165991187	Sum of GTIs [s]
revision	3	Processing version of data	ontime2	3098.4301153272	Sum of GTIs [s]
			ontime3	3198.9020658731	Sum of GTIs [s]
			ontime6	3484.0203303695	Sum of GTIs [s]
			ontime7	8170.6279659271	Sum of GTIs [s]
			l1events	1542652	Number of level 1 events

### 2.1.4 Events

	ccd 0	ccd 1	ccd 2	ccd 3	ccd 6	ccd 7		ccd 0	ccd 1	ccd 2	ccd 3	ccd 6	ccd 7
level 1 events	201204	203557	196618	202862	226922	511489	grade 0 events	98627	99965	96609	100455	110487	119920
rejected events	23524	24511	23739	24760	25293	44128		49%	49%	49%	49%	48%	23%
rejected %	11%	12%	12%	12%	11%	8%	grade 1 events	521	487	499	523	511	315
								0%	0%	0%	0%	0%	0%
							grade 2 events	31441	31882	30827	31540	35206	104246
								15%	15%	15%	15%	15%	20%
							grade 3 events	11294	11248	10883	11357	12499	47756
								5%	5%	5%	5%	5%	9%
							grade 4 events	11411	11387	10887	11411	12459	47572
								5%	5%	5%	5%	5%	9%
							grade 5 events	1619	1569	1474	1661	1853	8364
								0%	0%	0%	0%	0%	1%
							grade 6 events	26191	26456	25111	25019	32648	151734
								13%	12%	12%	12%	14%	29%
							grade 7 events	20100	20563	20328	20896	21259	31582
								9%	10%	10%	10%	9%	6%

## 2.2 Compared Parameters

Parameter	Planned	Actual	Parameter	Planned	Actual
Instrument	ACIS	ACIS	Obspar format version number	7	7
Detector	ACIS-012367	ACIS-012367	Obspar file type	PREDICTED	ACTUAL
Grating	NONE	NONE	Obspar update status	NONE	UPDATED
Data mode	FAINT	FAINT	On-chip summing requested	N	N
Observation mode	SECONDARY	SECONDARY	Subarray requested	NONE	NONE
[deg] Pointing RA	0	354.0254543905303	Alternating exposures requested	N	N
[deg] Pointing Dec	0	11.98587902926304	[s] Primary exposure time	3.2	3.2
[deg] Pointing Roll	0.0	297.6685384873988			
[mm] SIM focus pos	-0.782348	-0.7809083437167272			
[mm] SIM defocus	0	0.7524282956875696			
[mm] SIM translation stage pos	-233.592463	250.466033080201			
[mm] SIM translation stage offset	0	-0.01005468664627074			
[s] Observation start time (MET)	126591841.557328	126591840.78886			
Observation start date	2002-01-05T04:24:02	2002-01-05T04:24:00			
[s] Observation end time (MET)	126613151.308185	126613150.53972			
Observation end date	2002-01-05T10:19:11	2002-01-05T10:19:10			
Read mode	TIMED	TIMED			

## 2.3 Star Slots

## 2.4 FID Slots

## **A Summary**

### **A.1 Status**

V&V Scientist	Jen Lauer
V&V Date (YYYY-MM-DD)	2012.10.02
V&V Edition	1
V&V Disposition and Status	OK
V&V Charge Time	8.1706279659271

### **A.2 Comments**