

V&V Reference Report

L2 ASCDS Version : 7.6.8.1

Observation 61358 - L2 Version 001
Chandra X-Ray Center

L2 Processing Date : Aug 26 2006

Contents

1	Front	2
2	OBI	3
2.1	OBI	3
2.1.1	Images	3
2.1.2	Bias	3
2.1.3	Parameters	4
2.1.4	Events	4
2.2	Compared Parameters	5
2.3	Aspect	6
2.4	Star Slots	8
2.5	FID Slots	8
A	Summary	9
A.1	Status	9
A.2	Comments	9

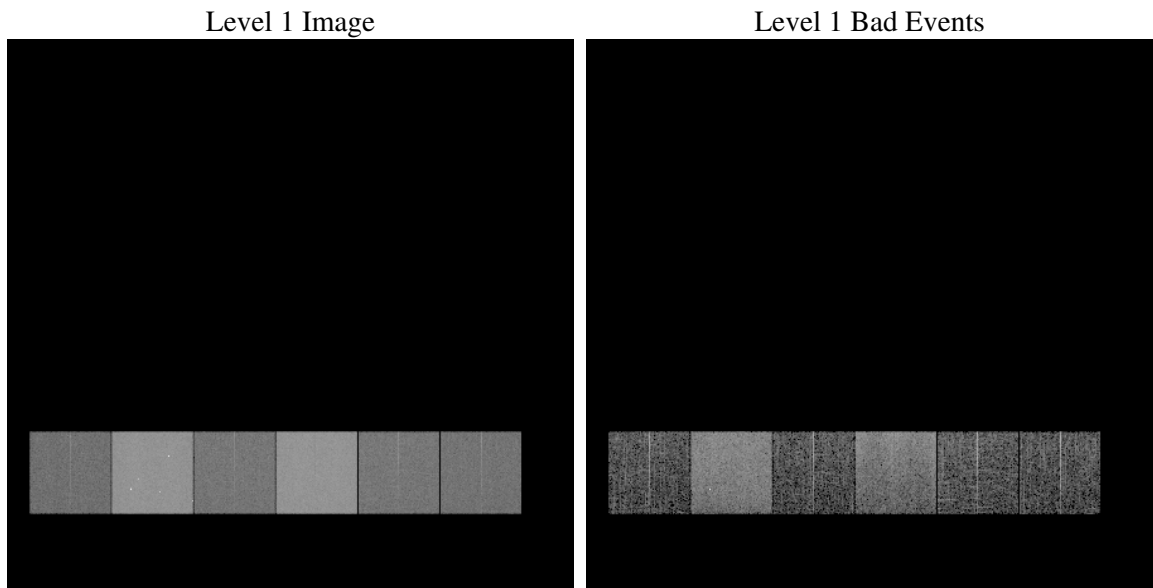
1 Front

seq_num	
obs_id	61358
title	ACIS-456789 diagnostics
observer	CHANDRA engineering request/realtime commanding
object	
dtcycle	0
cycle	P
ra_targ	0.0
dec_targ	0.0
ra_nom	352.02309215269
dec_nom	-11.517548609061
roll_nom	289.44146860528
revision	2
ontime	6241.422812447
livetime	6162.3901586621
ontime4	2375.0474627316
ontime5	6708.1613208503
ontime6	2644.0122138411
ontime7	6241.422812447
ontime8	2657.058493644
ontime9	2511.0067730844
l2events	1194007

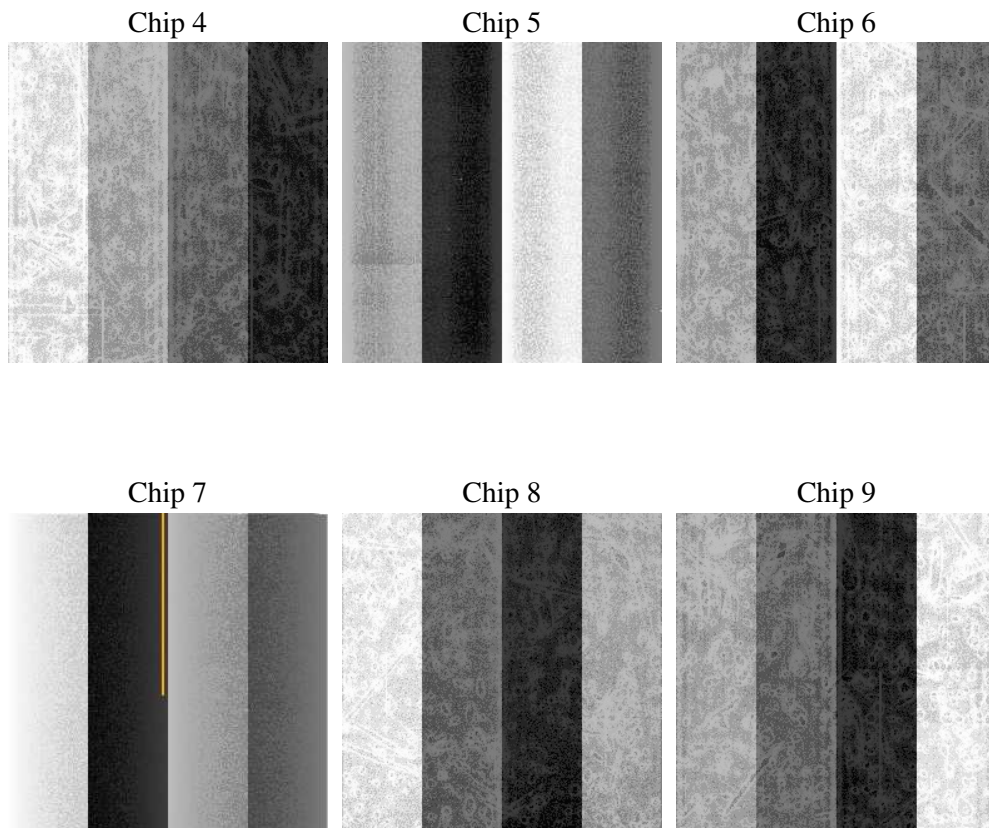
2 OBI

2.1 OBI

2.1.1 Images



2.1.2 Bias



2.1.3 Parameters

obi_num	1
ascdsver	7.6.8.1
caldbver	3.2.3
date	2006-08-26T16:33:34
revision	2

sched_exp_time	0.0
ontime	6242.1781318337
ontime4	2375.6796621233
ontime5	6708.8756002337
ontime6	2644.6854532361
ontime7	6242.1781318337
ontime8	2657.6496530324
ontime9	2511.8031324744
l1events	1423091

2.1.4 Events

	ccd 4	ccd 5	ccd 6	ccd 7	ccd 8	ccd 9
level 1 events	145504	382179	172550	389103	175220	158535
rejected events	18681	54567	18645	42633	21272	18865
rejected %	12%	14%	10%	10%	12%	11%

	ccd 4	ccd 5	ccd 6	ccd 7	ccd 8	ccd 9
grade 0 events	71760	43197	84349	66111	84827	76597
	49%	11%	48%	16%	48%	48%
grade 1 events	387	398	404	144	418	392
	0%	0%	0%	0%	0%	0%
grade 2 events	22420	155333	26695	103040	27187	24696
	15%	40%	15%	26%	15%	15%
grade 3 events	7778	11595	9488	26420	9711	8648
	5%	3%	5%	6%	5%	5%
grade 4 events	7743	11232	9416	26394	9812	8655
	5%	2%	5%	6%	5%	5%
grade 5 events	1183	6268	1495	6003	1599	1441
	0%	1%	0%	1%	0%	0%
grade 6 events	17122	106255	23957	124505	22411	21074
	11%	27%	13%	31%	12%	13%
grade 7 events	17111	47901	16746	36486	19255	17032
	11%	12%	9%	9%	10%	10%

2.2 Compared Parameters

Parameter	Planned	Actual	Parameter	Planned	Actual
Instrument	ACIS	ACIS	Obspar format version number	6	6
Detector	ACIS-456789	ACIS-456789	Obspar file type	PREDICTED	ACTUAL
Grating	NONE	NONE	Obspar update status	NONE	UPDATED
Data mode	FAINT	FAINT	On-chip summing requested	N	N
Observation mode	SECONDARY	SECONDARY	Subarray requested	NONE	NONE
Pointing RA	0	352.0230921526885	Alternating exposures requested	N	N
Pointing Dec	0	-11.51754860906106	Primary exposure time	3.2	3.2
Pointing Roll	0.0	289.4414686052756			
SIM focus pos (mm)	-0.684267	-0.7809083437167272			
SIM defocus (mm)	0	0.7524282956875696			
SIM translation stage pos (mm)	-190.132523	250.466033080201			
SIM translation stage offset (mm)	0	-0.01005468664627074			
Observation start time	126786111.865141	126786111.09667			
Observation start date	2002-01-07T10:21:52	2002-01-07T10:21:51			
Observation end time	126798182.265627	126798181.49716			
Observation end date	2002-01-07T13:43:02	2002-01-07T13:43:01			
Read mode	TIMED	TIMED			

2.3 Aspect

2.4 Star Slots

2.5 FID Slots

A Summary

A.1 Status

V&V Scientist	Jen Lauer
V&V Date (YYYY-MM-DD)	2006.08.28
V&V Edition	1
V&V Disposition and Status	OK
V&V Charge Time	6.24142281

A.2 Comments