

V&V Reference Report

L2 ASCDS Version : 8.4.5

Observation 61331 - L2 Version 3
Chandra X-Ray Center

L2 Processing Date : Oct 1 2012

Contents

1	Front	2
2	OBI	3
2.1	OBI	3
2.1.1	Images	3
2.1.2	Bias	3
2.1.3	Parameters	4
2.1.4	Events	4
2.2	Compared Parameters	5
2.3	Star Slots	6
2.4	FID Slots	6
A	Summary	7
A.1	Status	7
A.2	Comments	7

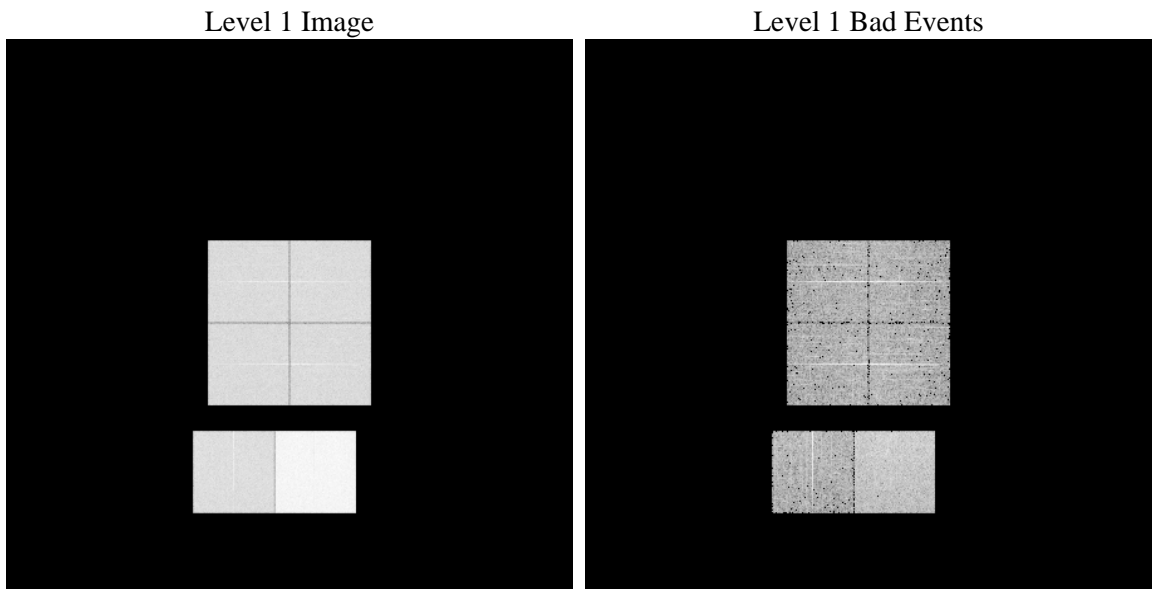
1 Front

seq_num	 	Sequence number
obs_id	61331	Observation id
title	ACIS-012367 diagnostics	Proposal title
observer	CHANDRA engineering request/realtime commanding	Principal investig
object	 	Source name
dtcycle	0	
cycle	P	events from which exps? Prim/Second/Both
ra_targ	0.0	Observer's specified target RA [deg]
dec_targ	0.0	Observer's specified target Dec [deg]
ra_nom	179.96970973764	Nominal RA [deg]
dec_nom	44.018593615432	Nominal Dec [deg]
roll_nom	106.72465677037	Nominal Roll [deg]
revision	3	Processing version of data
ontime	8204.0198399276	Sum of GTIs [s]
livetime	8100.1356008467	Livetime [s]
ontime0	3260.4814584404	Sum of GTIs [s]
ontime1	3335.9883971214	Sum of GTIs [s]
ontime2	3147.967964232	Sum of GTIs [s]
ontime3	3164.3370650858	Sum of GTIs [s]
ontime6	3452.582660675	Sum of GTIs [s]
ontime7	8204.0198399276	Sum of GTIs [s]
l2events	1305190	Number of level 2 events

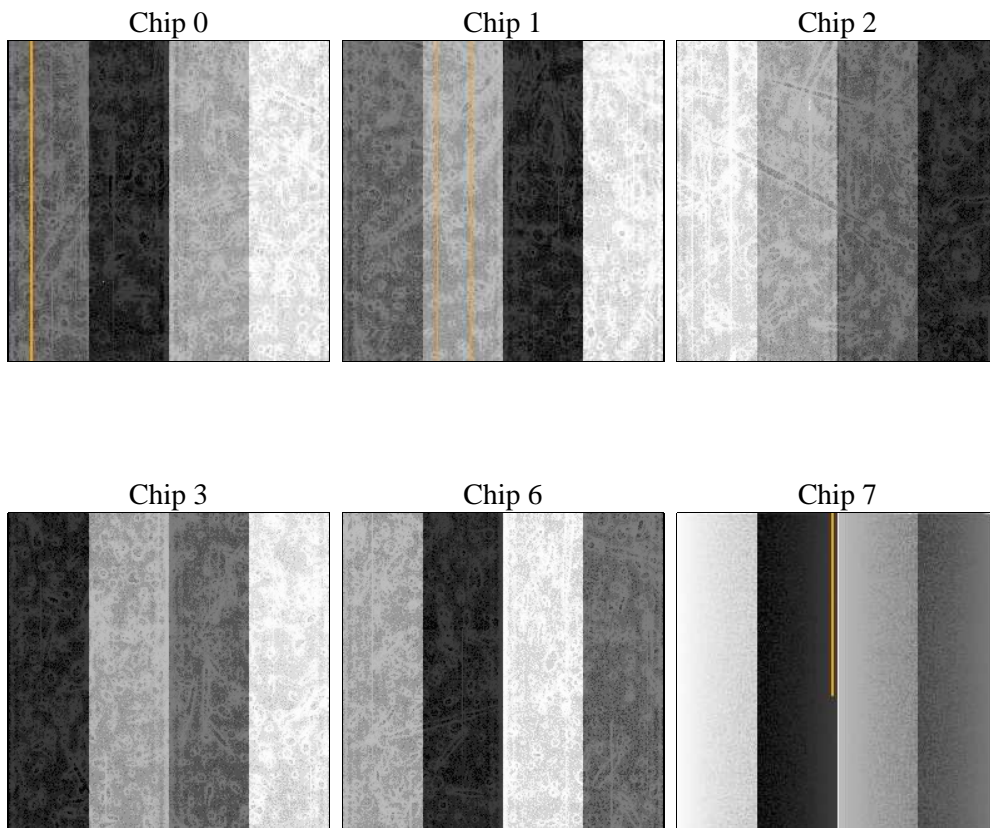
2 OBI

2.1 OBI

2.1.1 Images



2.1.2 Bias



2.1.3 Parameters

obi_num	0	Obi number	sched_exp_time	0.0	[s] Scheduled observation exposure time
ascdsver	8.4.5	Processing system revision	ontime	8204.0198399276	Sum of GTIs [s]
caldbver	4.5.2	 	ontime0	3260.4814584404	Sum of GTIs [s]
date	2012-10-01T11:22:43	Date and time of file creation	ontime1	3335.9883971214	Sum of GTIs [s]
revision	3	Processing version of data	ontime2	3147.967964232	Sum of GTIs [s]
			ontime3	3164.3370650858	Sum of GTIs [s]
			ontime6	3452.582660675	Sum of GTIs [s]
			ontime7	8204.0198399276	Sum of GTIs [s]
			l1events	1534039	Number of level 1 events

2.1.4 Events

	ccd 0	ccd 1	ccd 2	ccd 3	ccd 6	ccd 7		ccd 0	ccd 1	ccd 2	ccd 3	ccd 6	ccd 7
level 1 events	201595	204650	197944	198792	222706	508352	grade 0 events	98380	100743	97206	97882	108194	118049
rejected events	24558	23976	24694	25919	26759	48159		48%	49%	49%	49%	48%	23%
rejected %	12%	11%	12%	13%	12%	9%	grade 1 events	487	489	438	504	514	317
								0%	0%	0%	0%	0%	0%
							grade 2 events	31614	32190	30885	30577	34015	102819
								15%	15%	15%	15%	15%	20%
							grade 3 events	11553	11530	10909	11099	12112	47255
								5%	5%	5%	5%	5%	9%
							grade 4 events	11445	11548	10998	10913	12273	46920
								5%	5%	5%	5%	5%	9%
							grade 5 events	1635	1661	1558	1670	1970	8794
								0%	0%	0%	0%	0%	1%
							grade 6 events	25963	26414	25076	24181	31319	150226
								12%	12%	12%	12%	14%	29%
							grade 7 events	20518	20075	20874	21966	22309	33972
								10%	9%	10%	11%	10%	6%

2.2 Compared Parameters

Parameter	Planned	Actual	Parameter	Planned	Actual
Instrument	ACIS	ACIS	Obspar format version number	7	7
Detector	ACIS-012367	ACIS-012367	Obspar file type	PREDICTED	ACTUAL
Grating	NONE	NONE	Obspar update status	NONE	UPDATED
Data mode	FAINT	FAINT	On-chip summing requested	N	N
Observation mode	SECONDARY	SECONDARY	Subarray requested	NONE	NONE
[deg] Pointing RA	0	179.9697097376364	Alternating exposures requested	N	N
[deg] Pointing Dec	0	44.01859361543184	[s] Primary exposure time	0.000000	3.2
[deg] Pointing Roll	0.0	106.7246567703684			
[mm] SIM focus pos	-0.782348	-0.6828225247311905			
[mm] SIM defocus	0	0.8505141146731063			
[mm] SIM translation stage pos	-233.592463	250.466033080201			
[mm] SIM translation stage offset	0	-0.01005468664627074			
[s] Observation start time (MET)	128649041.24	128649040.47165			
Observation start date	2002-01-28T23:50:41	2002-01-28T23:50:40			
[s] Observation end time (MET)	128671470.291	128671469.52255			
Observation end date	2002-01-29T06:04:30	2002-01-29T06:04:29			
Read mode	TIMED	TIMED			

2.3 Star Slots

2.4 FID Slots

A Summary

A.1 Status

V&V Scientist	Beth Sundheim
V&V Date (YYYY-MM-DD)	2012.10.03
V&V Edition	1
V&V Disposition and Status	OK
V&V Charge Time	8.2040198399276

A.2 Comments