

V&V Reference Report

L2 ASCDS Version : 7.6.8.1

Observation 61327 - L2 Version _e1
Chandra X-Ray Center

L2 Processing Date : Aug 29 2006

Contents

1	Front	2
2	OBI Primary	3
2.1	OBI	3
2.1.1	Images	3
2.1.2	Bias	3
2.1.3	Parameters	4
2.1.4	Events	4
2.2	Compared Parameters	5
2.3	Aspect	6
2.4	Star Slots	8
2.5	FID Slots	8
3	OBI Secondary	8
3.1	OBI	8
3.1.1	Images	8
3.1.2	Bias	8
3.1.3	Parameters	9
3.1.4	Events	9
A	Summary	10
A.1	Status	10
A.2	Comments	10

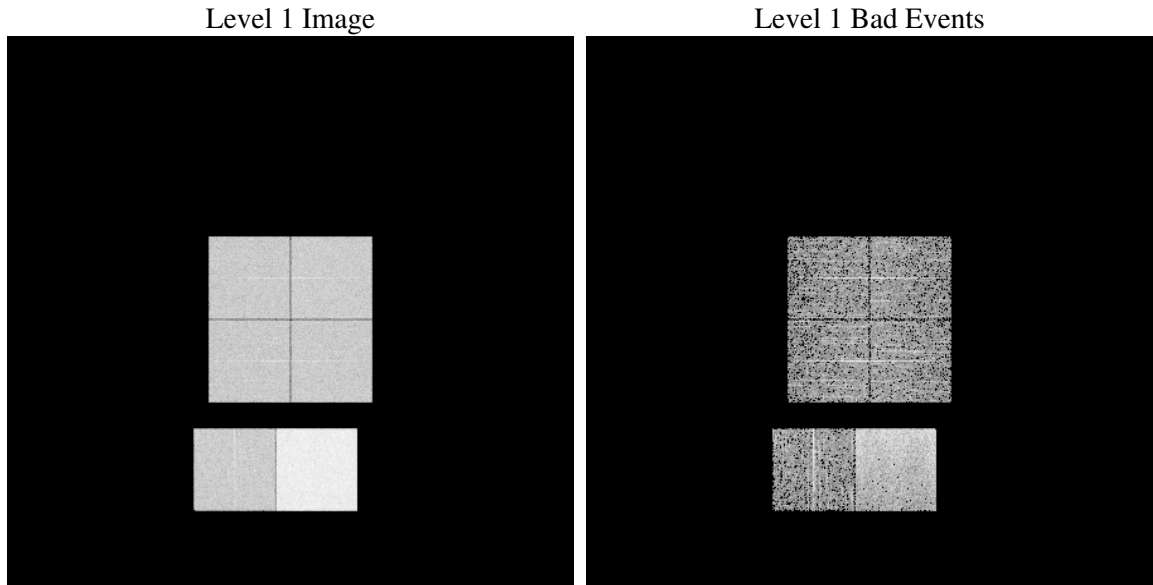
1 Front

seq_num	
obs_id	61327
title	ACIS-012367 diagnostics
observer	CHANDRA engineering request/realtime commanding
object	
dtcycle	0
cycle	P
ra_targ	0.0
dec_targ	0.0
ra_nom	134.95116950635
dec_nom	59.985006547731
roll_nom	178.85193334441
revision	2
ontime	4560.9636923373
livetime	4514.6434505348
ontime0	1848.6909793466
ontime1	1946.4108102024
ontime2	1792.0343392938
ontime3	1817.0975300968
ontime6	1840.4036993384
ontime7	4560.9636923373
l2events	720314

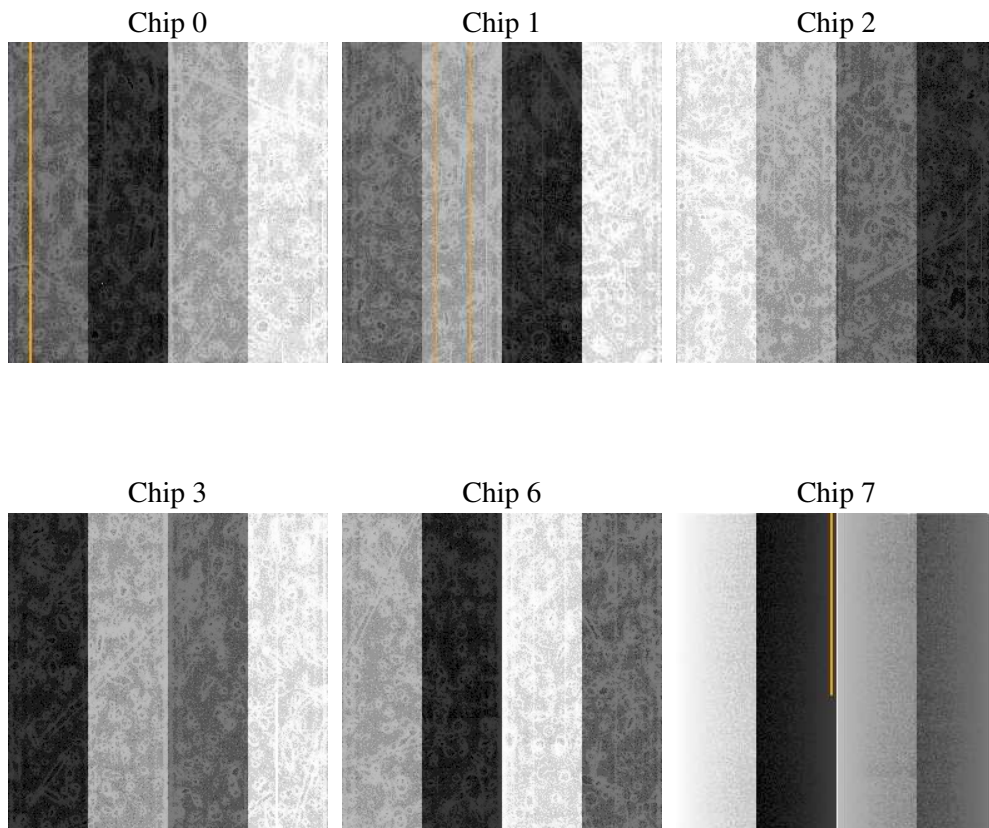
2 OBI Primary

2.1 OBI

2.1.1 Images



2.1.2 Bias



2.1.3 Parameters

obi_num	1
ascdsver	7.6.8.1
caldbver	3.2.3
date	2006-08-30T01:16:18
revision	2

sched_exp_time	0.0
ontime	4586.5804037452
ontime0	1858.8784015179
ontime1	1959.9044016004
ontime2	1798.2628014684
ontime3	1830.5911214948
ontime6	1846.755281508
ontime7	4586.5804037452
l1events	849470

2.1.4 Events

	ccd 0	ccd 1	ccd 2	ccd 3	ccd 6	ccd 7
level 1 events	111680	117341	111230	112698	117616	278905
rejected events	12591	13134	13722	13709	13790	31562
rejected %	11%	11%	12%	12%	11%	11%

	ccd 0	ccd 1	ccd 2	ccd 3	ccd 6	ccd 7
grade 0 events	54704	57830	54257	55627	56651	47305
	48%	49%	48%	49%	48%	16%
grade 1 events	330	348	306	291	308	108
	0%	0%	0%	0%	0%	0%
grade 2 events	17839	18590	17245	17596	17961	74439
	15%	15%	15%	15%	15%	26%
grade 3 events	6414	6697	6297	6358	6533	19000
	5%	5%	5%	5%	5%	6%
grade 4 events	6304	6490	6227	6330	6467	18835
	5%	5%	5%	5%	5%	6%
grade 5 events	897	968	891	973	1040	4378
	0%	0%	0%	0%	0%	1%
grade 6 events	14496	15447	13915	13951	16630	89248
	12%	13%	12%	12%	14%	31%
grade 7 events	10696	10971	12092	11572	12026	25592
	9%	9%	10%	10%	10%	9%

2.2 Compared Parameters

Parameter	Planned	Actual	Parameter	Planned	Actual
Instrument	ACIS	ACIS	Obspar format version number	6	6
Detector	ACIS-012367	ACIS-012367	Obspar file type	PREDICTED	ACTUAL
Grating	NONE	NONE	Obspar update status	NONE	UPDATED
Data mode	FAINT	FAINT	On-chip summing requested	N	N
Observation mode	SECONDARY	SECONDARY	Subarray requested	NONE	NONE
Pointing RA	0	134.9511695063499	Alternating exposures requested	Y	Y
Pointing Dec	0	59.98500654773071	Primary exposure time	4	4
Pointing Roll	0.0	178.85193334441	Secondary exposure time	3.2	3.2
SIM focus pos (mm)	-0.782348	-0.7809083437167272	Duty cycle	1	1
SIM defocus (mm)	0	0.7524282956875696			
SIM translation stage pos (mm)	-233.592463	250.466033080201			
SIM translation stage offset (mm)	0	-0.01005468664627074			
Observation start time	128883653.499579	128883652.7311			
Observation start date	2002-01-31T17:00:53	2002-01-31T17:00:52			
Observation end time	128902425.350336	128902424.58186			
Observation end date	2002-01-31T22:13:45	2002-01-31T22:13:44			
Read mode	TIMED	TIMED			

2.3 Aspect

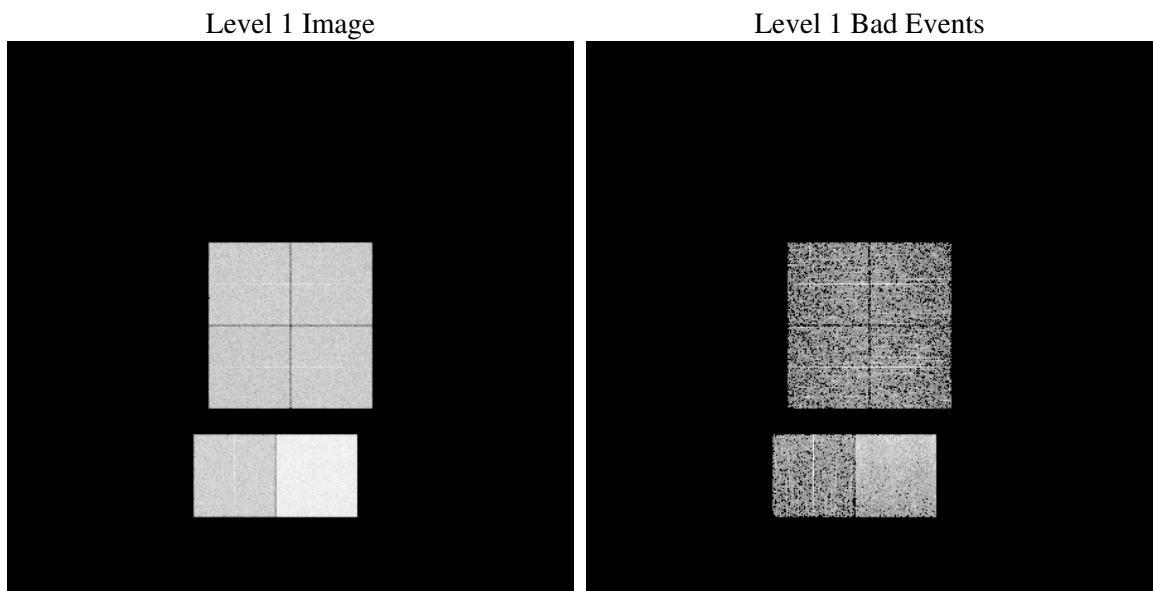
2.4 Star Slots

2.5 FID Slots

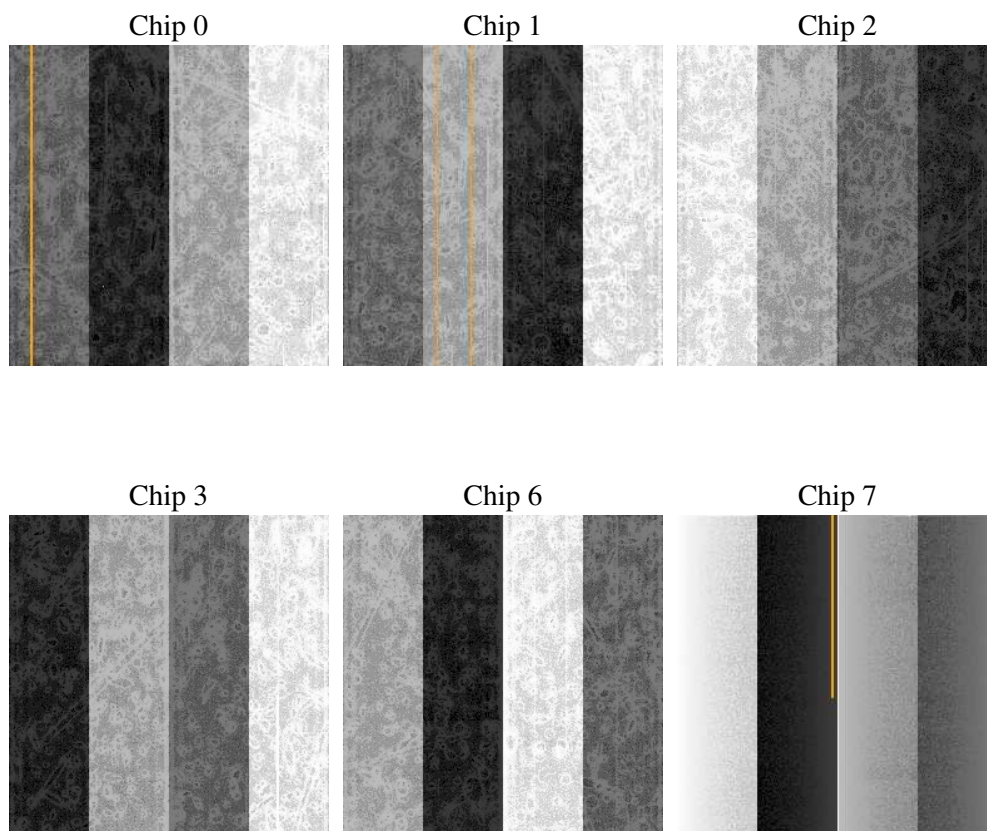
3 OBI Secondary

3.1 OBI

3.1.1 Images



3.1.2 Bias



3.1.3 Parameters

obi_num	1
ascdsver	7.6.8.1
caldsver	3.2.3
date	2006-08-30T01:27:13
revision	2

sched_exp_time	0.0
ontime	3681.8214302063
ontime0	1507.0835959911
ontime1	1510.3246359825
ontime2	1380.6830363274
ontime3	1464.9500761032
ontime6	1581.6275157928
ontime7	3681.8214302063
l1events	687094

3.1.4 Events

	ccd 0	ccd 1	ccd 2	ccd 3	ccd 6	ccd 7
level 1 events	91695	91188	85410	91215	101457	226129
rejected events	10509	10211	10596	11195	12622	26548
rejected %	11%	11%	12%	12%	12%	11%

	ccd 0	ccd 1	ccd 2	ccd 3	ccd 6	ccd 7
grade 0 events	44933	44848	41677	44867	48582	38033
	49%	49%	48%	49%	47%	16%
grade 1 events	225	208	248	207	255	106
	0%	0%	0%	0%	0%	0%
grade 2 events	14517	14171	13437	14036	15427	59855
	15%	15%	15%	15%	15%	26%
grade 3 events	5132	5183	4751	5062	5576	15277
	5%	5%	5%	5%	5%	6%
grade 4 events	5236	5225	4804	5227	5560	15224
	5%	5%	5%	5%	5%	6%
grade 5 events	713	740	667	762	861	3608
	0%	0%	0%	0%	0%	1%
grade 6 events	11934	11891	10848	11158	14425	72428
	13%	13%	12%	12%	14%	32%
grade 7 events	9005	8922	8978	9896	10771	21598
	9%	9%	10%	10%	10%	9%

A Summary

A.1 Status

V&V Scientist	Jen Lauer
V&V Date (YYYY-MM-DD)	2006.08.30
V&V Edition	1
V&V Disposition and Status	OK
V&V Charge Time	8.22009784

A.2 Comments