

V&V Reference Report

L2 ASCDS Version : 8.4.5

Observation 61325 - L2 Version 3
Chandra X-Ray Center

L2 Processing Date : Oct 1 2012

Contents

1	Front	2
2	OBI	3
2.1	OBI	3
2.1.1	Images	3
2.1.2	Bias	3
2.1.3	Parameters	4
2.1.4	Events	4
2.2	Compared Parameters	5
2.3	Star Slots	6
2.4	FID Slots	6
A	Summary	7
A.1	Status	7
A.2	Comments	7

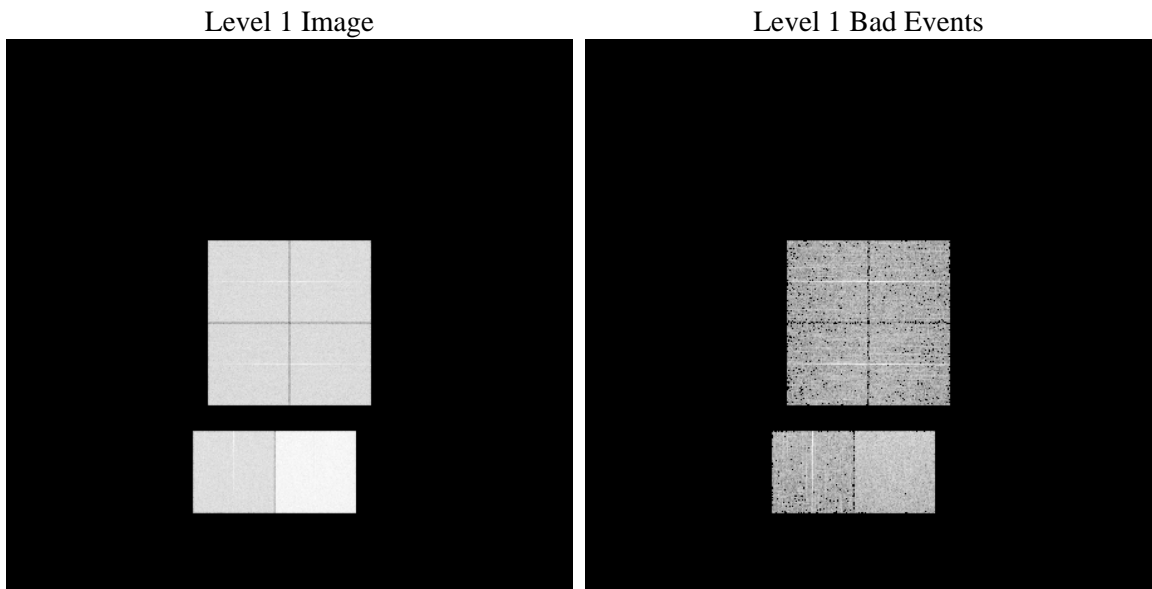
1 Front

seq_num	 	Sequence number
obs_id	61325	Observation id
title	ACIS-012367 diagnostics	Proposal title
observer	CHANDRA engineering request/realtime commanding	Principal investig
object	 	Source name
dtcycle	0	
cycle	P	events from which exps? Prim/Second/Both
ra_targ	0.0	Observer's specified target RA [deg]
dec_targ	0.0	Observer's specified target Dec [deg]
ra_nom	180.99674164736	Nominal RA [deg]
dec_nom	-3.9715772491127	Nominal Dec [deg]
roll_nom	63.705259333969	Nominal Roll [deg]
revision	3	Processing version of data
ontime	7622.400007084	Sum of GTIs [s]
livetime	7525.8805885361	Livetime [s]
ontime0	3059.1037093699	Sum of GTIs [s]
ontime1	3130.406519562	Sum of GTIs [s]
ontime2	2899.4615235031	Sum of GTIs [s]
ontime3	2965.1138983965	Sum of GTIs [s]
ontime6	3239.8098792285	Sum of GTIs [s]
ontime7	7622.400007084	Sum of GTIs [s]
l2events	1215184	Number of level 2 events

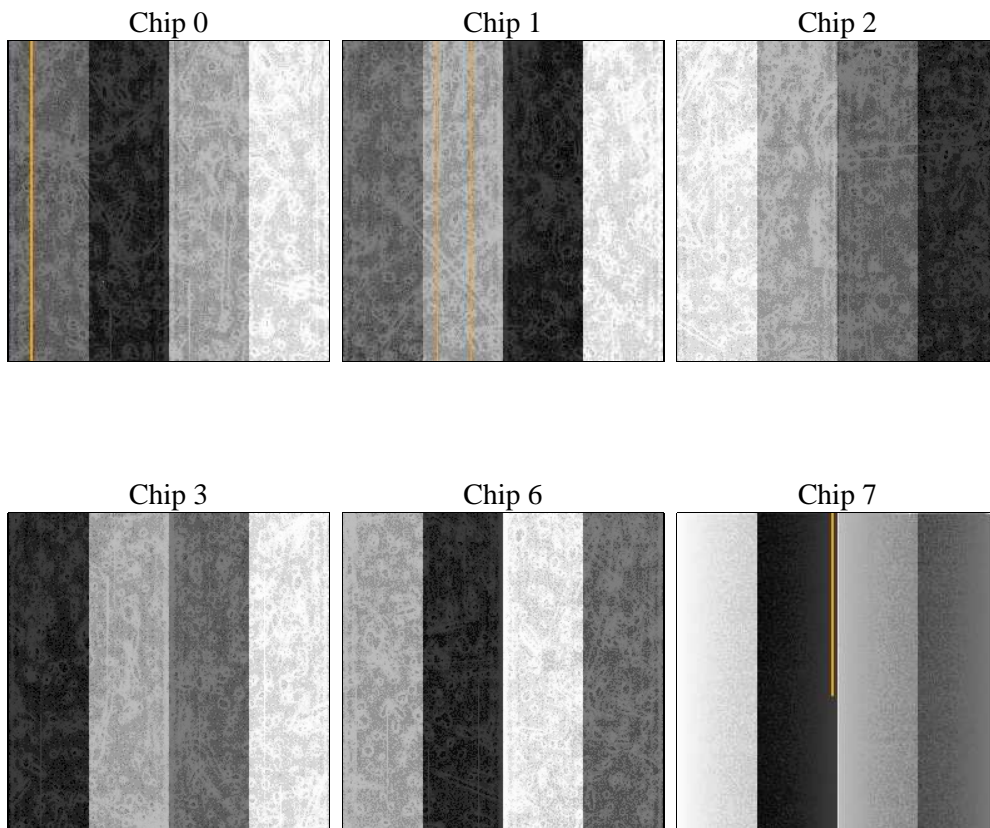
2 OBI

2.1 OBI

2.1.1 Images



2.1.2 Bias



2.1.3 Parameters

obi_num	1	Obi number	sched_exp_time	0.0	[s] Scheduled observation exposure time
ascdsver	8.4.5	Processing system revision	ontime	7622.400007084	Sum of GTIs [s]
caldsver	4.5.2	 	ontime0	3059.1037093699	Sum of GTIs [s]
date	2012-10-01T13:21:05	Date and time of file creation	ontime1	3130.406519562	Sum of GTIs [s]
revision	3	Processing version of data	ontime2	2899.4615235031	Sum of GTIs [s]
			ontime3	2965.1138983965	Sum of GTIs [s]
			ontime6	3239.8098792285	Sum of GTIs [s]
			ontime7	7622.400007084	Sum of GTIs [s]
			l1events	1413717	Number of level 1 events

2.1.4 Events

	ccd 0	ccd 1	ccd 2	ccd 3	ccd 6	ccd 7		ccd 0	ccd 1	ccd 2	ccd 3	ccd 6	ccd 7
level 1 events	186276	189868	179211	184062	208108	466192	grade 0 events	91550	93631	87637	90765	100898	109338
rejected events	20898	20755	21230	22355	23744	38687		49%	49%	48%	49%	48%	23%
rejected %	11%	10%	11%	12%	11%	8%	grade 1 events	457	421	452	449	449	258
								0%	0%	0%	0%	0%	0%
							grade 2 events	28984	29818	28122	28242	31772	94723
								15%	15%	15%	15%	15%	20%
							grade 3 events	10450	10659	9844	10203	11393	43795
								5%	5%	5%	5%	5%	9%
							grade 4 events	10582	10726	9838	10302	11469	43065
								5%	5%	5%	5%	5%	9%
							grade 5 events	1500	1577	1385	1468	1751	7994
								0%	0%	0%	0%	0%	1%
							grade 6 events	23975	24471	22540	22352	28832	136786
								12%	12%	12%	12%	13%	29%
							grade 7 events	18778	18565	19393	20281	21544	30233
								10%	9%	10%	11%	10%	6%

2.2 Compared Parameters

Parameter	Planned	Actual	Parameter	Planned	Actual
Instrument	ACIS	ACIS	Obspar format version number	7	7
Detector	ACIS-012367	ACIS-012367	Obspar file type	PREDICTED	ACTUAL
Grating	NONE	NONE	Obspar update status	NONE	UPDATED
Data mode	FAINT	FAINT	On-chip summing requested	N	N
Observation mode	SECONDARY	SECONDARY	Subarray requested	NONE	NONE
[deg] Pointing RA	0	180.9967416473606	Alternating exposures requested	N	N
[deg] Pointing Dec	0	-3.97157724911267	[s] Primary exposure time	0.000000	3.2
[deg] Pointing Roll	0.0	63.70525933396929			
[mm] SIM focus pos	-0.782348	-0.6828225247311905			
[mm] SIM defocus	0	0.8505141146731063			
[mm] SIM translation stage pos	-233.592463	250.466033080201			
[mm] SIM translation stage offset	0	-0.01005468664627074			
[s] Observation start time (MET)	129072394.957	129072394.18871			
Observation start date	2002-02-02T21:26:35	2002-02-02T21:26:34			
[s] Observation end time (MET)	129104049.008	129104048.23999			
Observation end date	2002-02-03T06:14:09	2002-02-03T06:14:08			
Read mode	TIMED	TIMED			

2.3 Star Slots

2.4 FID Slots

A Summary

A.1 Status

V&V Scientist	Beth Sundheim
V&V Date (YYYY-MM-DD)	2012.10.02
V&V Edition	1
V&V Disposition and Status	OK
V&V Charge Time	7.622400007084

A.2 Comments