

V&V Reference Report

L2 ASCDS Version : 8.4.5

Observation 61323 - L2 Version 3
Chandra X-Ray Center

L2 Processing Date : Oct 1 2012

Contents

1	Front	2
2	OBI	3
2.1	OBI	3
2.1.1	Images	3
2.1.2	Bias	3
2.1.3	Parameters	4
2.1.4	Events	4
2.2	Compared Parameters	5
2.3	Star Slots	6
2.4	FID Slots	6
A	Summary	7
A.1	Status	7
A.2	Comments	7

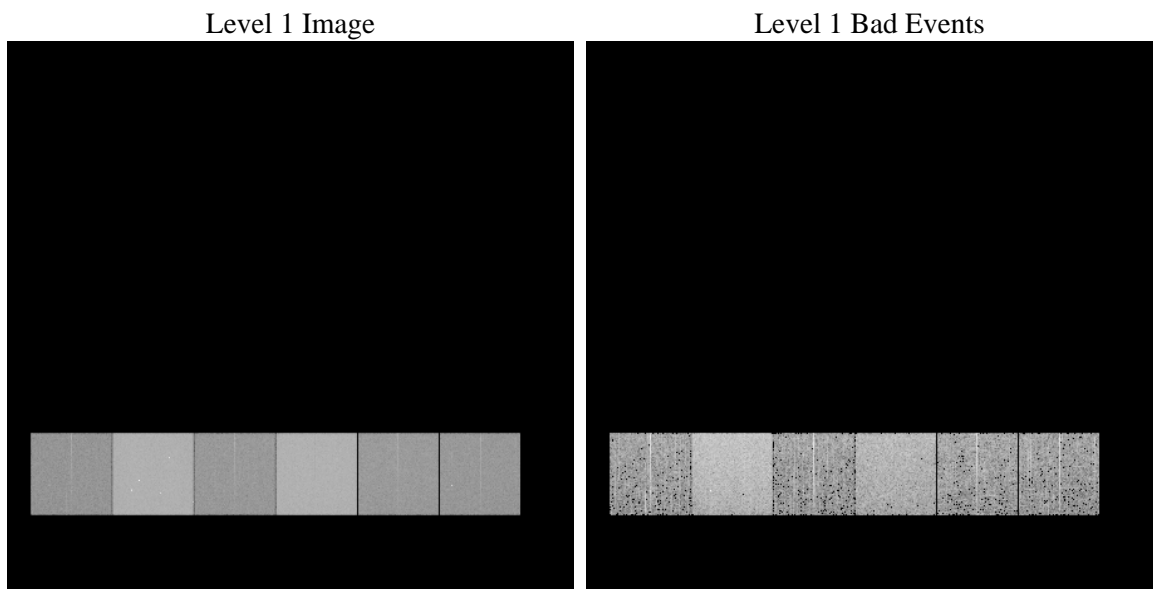
1 Front

seq_num	 	Sequence number
obs_id	61323	Observation id
title	ACIS-456789 diagnostics	Proposal title
observer	CHANDRA engineering request/realtime commanding	Principal investig
object	 	Source name
dtcycle	0	
cycle	P	events from which exps? Prim/Second/Both
ra_targ	0.0	Observer's specified target RA [deg]
dec_targ	0.0	Observer's specified target Dec [deg]
ra_nom	140.02997942632	Nominal RA [deg]
dec_nom	-39.982921291999	Nominal Dec [deg]
roll_nom	3.7667115719827	Nominal Roll [deg]
revision	3	Processing version of data
ontime	6947.6146603972	Sum of GTIs [s]
livetime	6859.6397802159	Livetime [s]
ontime4	2585.363800168	Sum of GTIs [s]
ontime5	7445.3090771139	Sum of GTIs [s]
ontime6	2792.7488214225	Sum of GTIs [s]
ontime7	6947.6146603972	Sum of GTIs [s]
ontime8	2964.6058414578	Sum of GTIs [s]
ontime9	2805.5900606662	Sum of GTIs [s]
l2events	1310916	Number of level 2 events

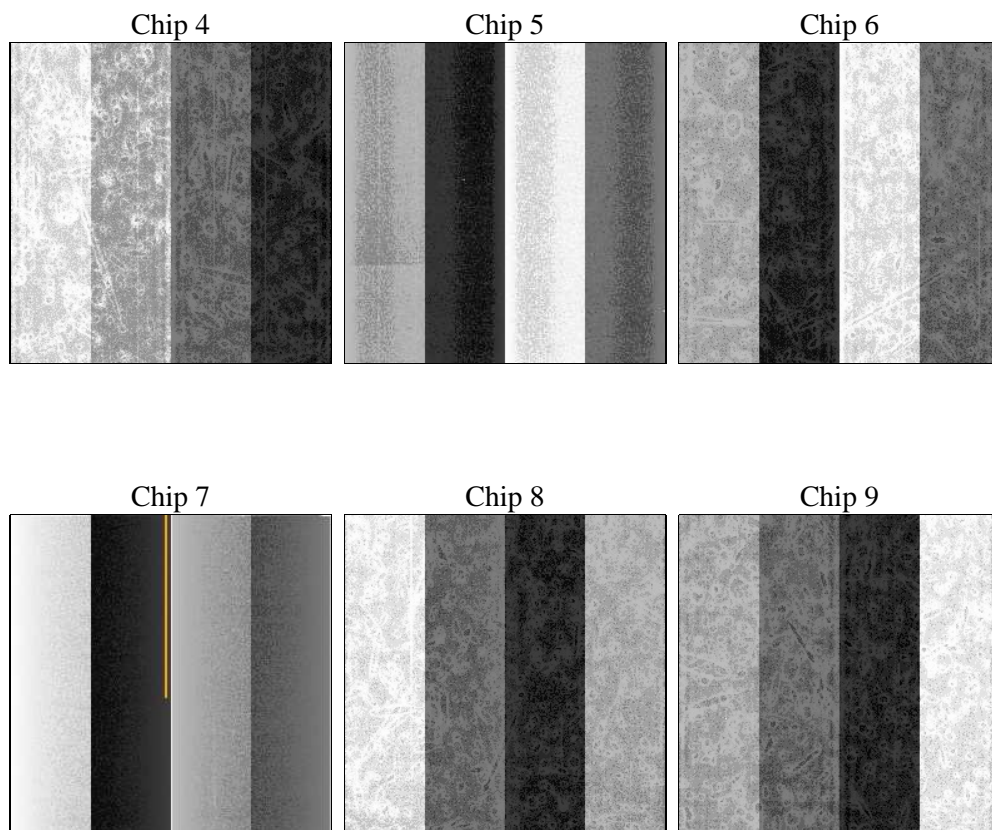
2 OBI

2.1 OBI

2.1.1 Images



2.1.2 Bias



2.1.3 Parameters

obi_num	0	Obi number	sched_exp_time	0.0	[s] Scheduled observation exposure time
ascdsver	8.4.5	Processing system revision	ontime	6947.6146603972	Sum of GTIs [s]
caldsver	4.5.2	 	ontime4	2585.363800168	Sum of GTIs [s]
date	2012-10-01T13:21:59	Date and time of file creation	ontime5	7445.3090771139	Sum of GTIs [s]
revision	3	Processing version of data	ontime6	2792.7488214225	Sum of GTIs [s]
			ontime7	6947.6146603972	Sum of GTIs [s]
			ontime8	2964.6058414578	Sum of GTIs [s]
			ontime9	2805.5900606662	Sum of GTIs [s]
			l1events	1542243	Number of level 1 events

2.1.4 Events

	ccd 4	ccd 5	ccd 6	ccd 7	ccd 8	ccd 9		ccd 4	ccd 5	ccd 6	ccd 7	ccd 8	ccd 9
level 1 events	157329	415699	179732	424983	190555	173945	grade 0 events	76888	88390	86335	98588	92690	84124
rejected events	21695	50904	20978	35909	22522	20795		48%	21%	48%	23%	48%	48%
rejected %	13%	12%	11%	8%	11%	11%	grade 1 events	440	319	389	224	395	416
								0%	0%	0%	0%	0%	0%
							grade 2 events	23922	130419	27544	85974	29572	27021
								15%	31%	15%	20%	15%	15%
							grade 3 events	8220	23191	9937	39690	10504	9593
								5%	5%	5%	9%	5%	5%
							grade 4 events	8187	22551	9941	39296	10712	9521
								5%	5%	5%	9%	5%	5%
							grade 5 events	1341	9636	1600	7370	1774	1518
								0%	2%	0%	1%	0%	0%
							grade 6 events	18417	100244	24997	125526	24555	22891
								11%	24%	13%	29%	12%	13%
							grade 7 events	19914	40949	18989	28315	20353	18861
								12%	9%	10%	6%	10%	10%

2.2 Compared Parameters

Parameter	Planned	Actual	Parameter	Planned	Actual
Instrument	ACIS	ACIS	Obspar format version number	7	7
Detector	ACIS-456789	ACIS-456789	Obspar file type	PREDICTED	ACTUAL
Grating	NONE	NONE	Obspar update status	NONE	UPDATED
Data mode	FAINT	FAINT	On-chip summing requested	N	N
Observation mode	SECONDARY	SECONDARY	Subarray requested	NONE	NONE
[deg] Pointing RA	0	140.0299794263156	Alternating exposures requested	N	N
[deg] Pointing Dec	0	-39.98292129199928	[s] Primary exposure time	0.000000	3.2
[deg] Pointing Roll	0.0	3.766711571982653			
[mm] SIM focus pos	-0.684267	-0.6828225247311905			
[mm] SIM defocus	0	0.8505141146731063			
[mm] SIM translation stage pos	-190.132523	250.466033080201			
[mm] SIM translation stage offset	0	-0.01005468664627074			
[s] Observation start time (MET)	129112158.809	129112158.04031			
Observation start date	2002-02-03T08:29:19	2002-02-03T08:29:18			
[s] Observation end time (MET)	129126414.509	129126413.74089			
Observation end date	2002-02-03T12:26:55	2002-02-03T12:26:53			
Read mode	TIMED	TIMED			

2.3 Star Slots

2.4 FID Slots

A Summary

A.1 Status

V&V Scientist	Beth Sundheim
V&V Date (YYYY-MM-DD)	2012.10.02
V&V Edition	1
V&V Disposition and Status	OK
V&V Charge Time	6.9476146603972

A.2 Comments