

V&V Reference Report

L2 ASCDS Version : 7.6.8.1

Observation 61319 - L2 Version 001
Chandra X-Ray Center

L2 Processing Date : Aug 31 2006

Contents

1	Front	2
2	OBI	3
2.1	OBI	3
2.1.1	Images	3
2.1.2	Bias	3
2.1.3	Parameters	4
2.1.4	Events	4
2.2	Compared Parameters	5
2.3	Aspect	6
2.4	Star Slots	8
2.5	FID Slots	8
A	Summary	9
A.1	Status	9
A.2	Comments	9

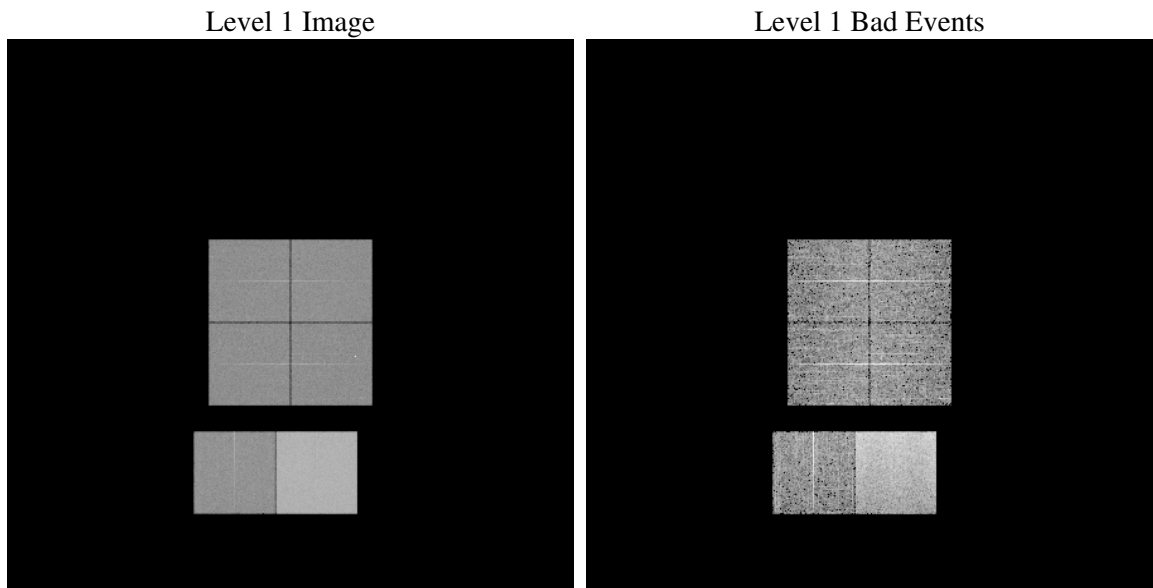
1 Front

seq_num	
obs_id	61319
title	ACIS-012367 diagnostics
observer	CHANDRA engineering request/realtime commanding
object	
dtcycle	0
cycle	P
ra_targ	0.0
dec_targ	0.0
ra_nom	285.35037564467
dec_nom	71.217499415465
roll_nom	32.69326777014
revision	2
ontime	8297.1758258641
livetime	8192.1119895975
ontime0	3315.8395998925
ontime1	3387.1832806766
ontime2	3205.7270579338
ontime3	3182.8757973015
ontime6	3484.4959126562
ontime7	8297.1758258641
l2events	1299954

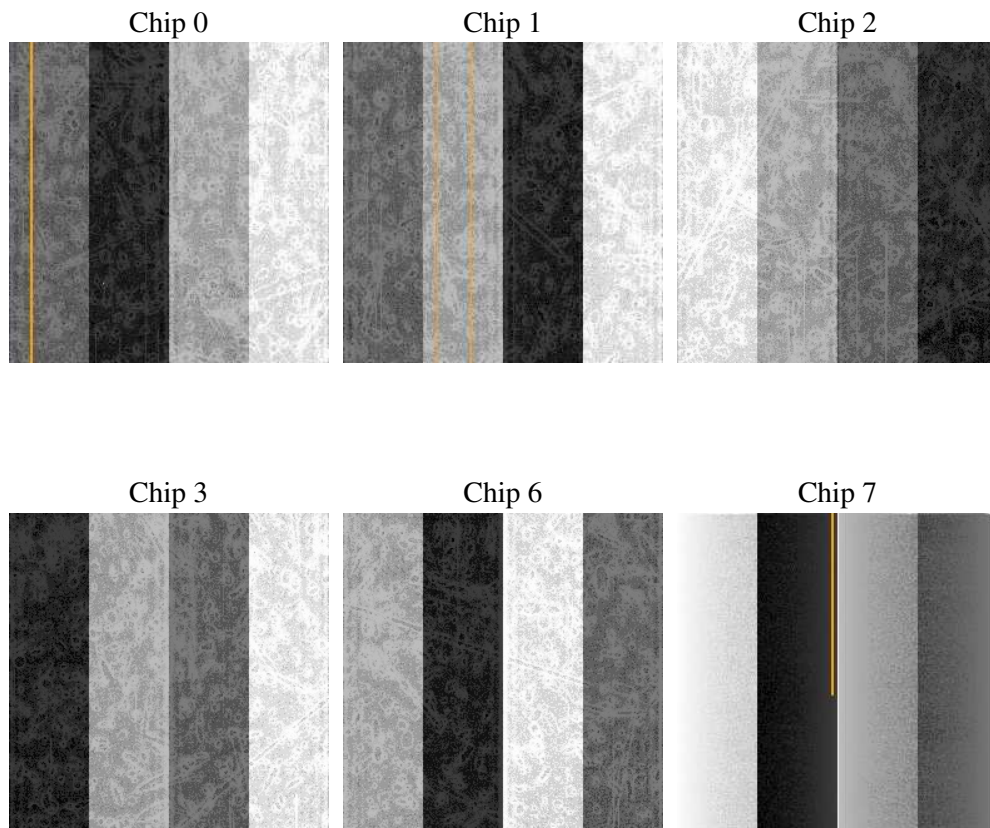
2 OBI

2.1 OBI

2.1.1 Images



2.1.2 Bias



2.1.3 Parameters

obi_num	0
ascdsver	7.6.8.1
caldsver	3.2.3
date	2006-09-01T02:07:46
revision	2

sched_exp_time	0.0
ontime	8300.1969146729
ontime0	3318.819648698
ontime1	3390.1222894937
ontime2	3208.6250267476
ontime3	3185.9379261136
ontime6	3487.3528414667
ontime7	8300.1969146729
l1events	1534666

2.1.4 Events

	ccd 0	ccd 1	ccd 2	ccd 3	ccd 6	ccd 7
level 1 events	200455	205861	198654	198172	222188	509336
rejected events	22660	23091	23782	24400	25372	58963
rejected %	11%	11%	11%	12%	11%	11%

	ccd 0	ccd 1	ccd 2	ccd 3	ccd 6	ccd 7
grade 0 events	98274	101098	97374	97672	107565	84565
	49%	49%	49%	49%	48%	16%
grade 1 events	471	483	470	529	495	179
	0%	0%	0%	0%	0%	0%
grade 2 events	31445	32258	30880	30399	34125	134252
	15%	15%	15%	15%	15%	26%
grade 3 events	11233	11616	10933	11050	12126	34189
	5%	5%	5%	5%	5%	6%
grade 4 events	11176	11897	10754	10833	12139	33745
	5%	5%	5%	5%	5%	6%
grade 5 events	1612	1780	1702	1737	1962	8123
	0%	0%	0%	0%	0%	1%
grade 6 events	25843	26354	25102	24110	31032	163792
	12%	12%	12%	12%	13%	32%
grade 7 events	20401	20375	21439	21842	22744	50491
	10%	9%	10%	11%	10%	9%

2.2 Compared Parameters

Parameter	Planned	Actual	Parameter	Planned	Actual
Instrument	ACIS	ACIS	Obspar format version number	6	6
Detector	ACIS-012367	ACIS-012367	Obspar file type	PREDICTED	ACTUAL
Grating	NONE	NONE	Obspar update status	NONE	UPDATED
Data mode	FAINT	FAINT	On-chip summing requested	N	N
Observation mode	SECONDARY	SECONDARY	Subarray requested	NONE	NONE
Pointing RA	0	285.3503756446656	Alternating exposures requested	N	N
Pointing Dec	0	71.21749941546523	Primary exposure time	3.2	3.2
Pointing Roll	0.0	32.69326777014027			
SIM focus pos (mm)	-0.782348	-0.6828225247311905			
SIM defocus (mm)	0	0.8505141146731063			
SIM translation stage pos (mm)	-233.592463	250.466033080201			
SIM translation stage offset (mm)	0	-0.01005468664627074			
Observation start time	129336113.117799	129336112.34935			
Observation start date	2002-02-05T22:41:53	2002-02-05T22:41:52			
Observation end time	129357422.868668	129357422.10021			
Observation end date	2002-02-06T04:37:03	2002-02-06T04:37:02			
Read mode	TIMED	TIMED			

2.3 Aspect

2.4 Star Slots

2.5 FID Slots

A Summary

A.1 Status

V&V Scientist	Jen Lauer
V&V Date (YYYY-MM-DD)	2006.09.01
V&V Edition	1
V&V Disposition and Status	OK
V&V Charge Time	8.29717582

A.2 Comments