

V&V Reference Report

L2 ASCDS Version : 8.4.5

Observation 61279 - L2 Version 3
Chandra X-Ray Center

L2 Processing Date : Oct 3 2012

Contents

1	Front	2
2	OBI	3
2.1	OBI	3
2.1.1	Images	3
2.1.2	Bias	3
2.1.3	Parameters	4
2.1.4	Events	4
2.2	Compared Parameters	5
2.3	Star Slots	6
2.4	FID Slots	6
A	Summary	7
A.1	Status	7
A.2	Comments	7

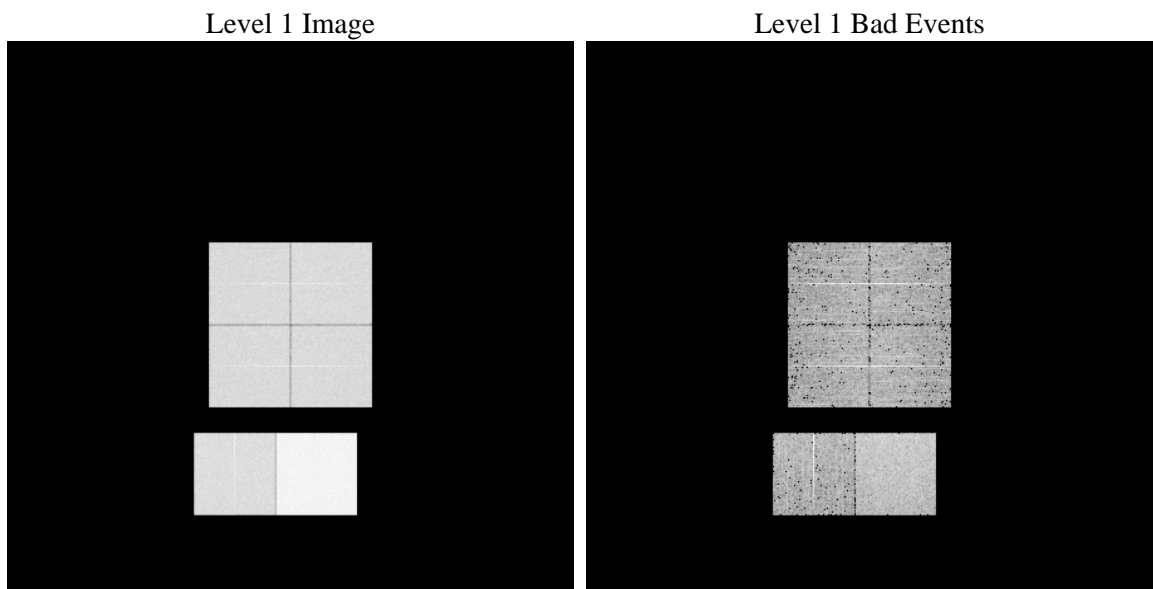
1 Front

seq_num	 	Sequence number
obs_id	61279	Observation id
title	ACIS-012367 diagnostics	Proposal title
observer	CHANDRA engineering request/realtime commanding	Principal investig
object	 	Source name
dtcycle	0	
cycle	P	events from which exps? Prim/Second/Both
ra_targ	0.0	Observer's specified target RA [deg]
dec_targ	0.0	Observer's specified target Dec [deg]
ra_nom	150.03217336743	Nominal RA [deg]
dec_nom	-29.993482956172	Nominal Dec [deg]
roll_nom	340.38972350313	Nominal Roll [deg]
revision	3	Processing version of data
ontime	8463.823715046	Sum of GTIs [s]
livetime	8356.6496828633	Livetime [s]
ontime0	3386.8813405484	Sum of GTIs [s]
ontime1	3514.766455397	Sum of GTIs [s]
ontime2	3323.5055904239	Sum of GTIs [s]
ontime3	3315.5794277787	Sum of GTIs [s]
ontime6	3644.324909091	Sum of GTIs [s]
ontime7	8463.823715046	Sum of GTIs [s]
l2events	1331441	Number of level 2 events

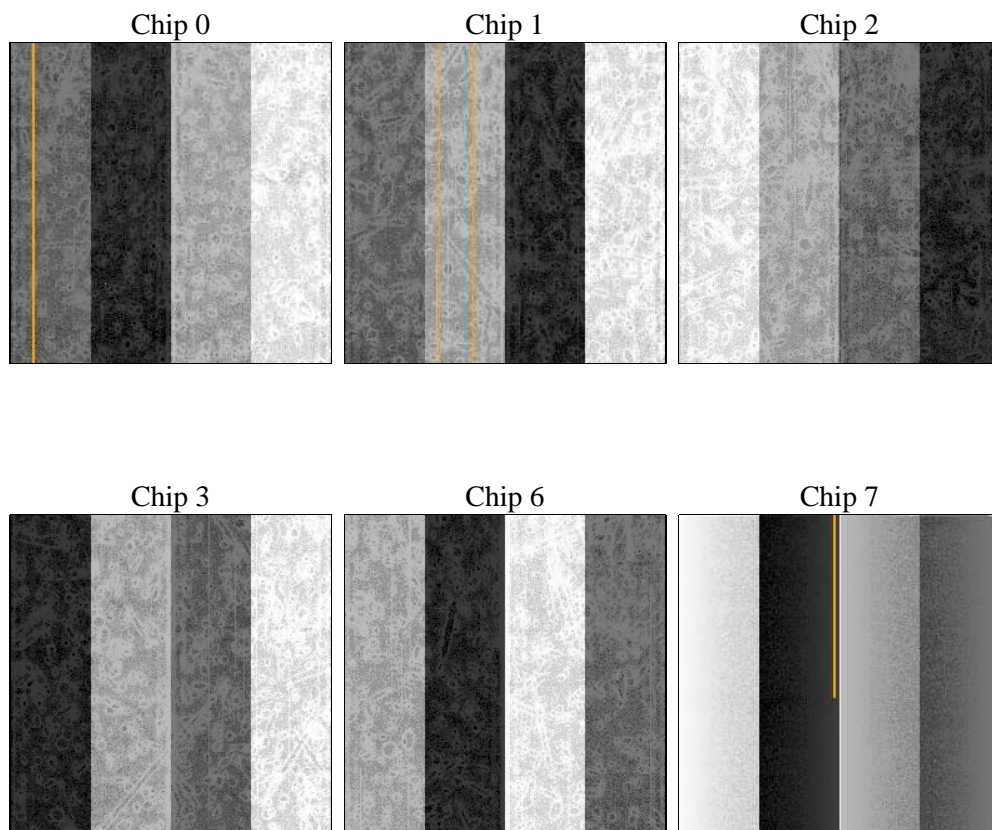
2 OBI

2.1 OBI

2.1.1 Images



2.1.2 Bias



2.1.3 Parameters

obi_num	0	Obi number	sched_exp_time	0.0	[s] Scheduled observation exposure time
ascdsver	8.4.5	Processing system revision	ontime	8463.823715046	Sum of GTIs [s]
caldsver	4.5.2	 	ontime0	3386.8813405484	Sum of GTIs [s]
date	2012-10-03T06:35:14	Date and time of file creation	ontime1	3514.766455397	Sum of GTIs [s]
revision	3	Processing version of data	ontime2	3323.5055904239	Sum of GTIs [s]
			ontime3	3315.5794277787	Sum of GTIs [s]
			ontime6	3644.324909091	Sum of GTIs [s]
			ontime7	8463.823715046	Sum of GTIs [s]
			l1events	1563912	Number of level 1 events

2.1.4 Events

	ccd 0	ccd 1	ccd 2	ccd 3	ccd 6	ccd 7		ccd 0	ccd 1	ccd 2	ccd 3	ccd 6	ccd 7
level 1 events	203305	210404	203221	203478	230190	513314	grade 0 events	98311	102144	98759	98703	109750	117052
rejected events	24375	25175	25522	26656	28107	46193		48%	48%	48%	48%	47%	22%
rejected %	11%	11%	12%	13%	12%	8%	grade 1 events	533	539	513	538	574	357
								0%	0%	0%	0%	0%	0%
							grade 2 events	31636	32435	31244	31186	35111	102304
								15%	15%	15%	15%	15%	19%
							grade 3 events	11387	11929	11223	11161	12561	47530
								5%	5%	5%	5%	5%	9%
							grade 4 events	11433	11863	11205	11243	12679	47351
								5%	5%	5%	5%	5%	9%
							grade 5 events	1669	1912	1647	1844	2075	9241
								0%	0%	0%	0%	0%	1%
							grade 6 events	26163	27023	25450	24529	32181	153050
								12%	12%	12%	12%	13%	29%
							grade 7 events	22173	22559	23180	24274	25259	36429
								10%	10%	11%	11%	10%	7%

2.2 Compared Parameters

Parameter	Planned	Actual	Parameter	Planned	Actual
Instrument	ACIS	ACIS	Obspar format version number	7	7
Detector	ACIS-012367	ACIS-012367	Obspar file type	PREDICTED	ACTUAL
Grating	NONE	NONE	Obspar update status	NONE	UPDATED
Data mode	FAINT	FAINT	On-chip summing requested	N	N
Observation mode	SECONDARY	SECONDARY	Subarray requested	NONE	NONE
[deg] Pointing RA	0	150.0321733674324	Alternating exposures requested	N	N
[deg] Pointing Dec	0	-29.99348295617206	[s] Primary exposure time	0.000000	3.2
[deg] Pointing Roll	0.0	340.3897235031335			
[mm] SIM focus pos	-0.782348	-0.6828225247311905			
[mm] SIM defocus	0	0.8505141146731063			
[mm] SIM translation stage pos	-233.592463	250.466033080201			
[mm] SIM translation stage offset	0	-0.01005468664627074			
[s] Observation start time (MET)	131394046.701	131394045.93245			
Observation start date	2002-03-01T18:20:47	2002-03-01T18:20:45			
[s] Observation end time (MET)	131415356.452	131415355.68331			
Observation end date	2002-03-02T00:15:56	2002-03-02T00:15:55			
Read mode	TIMED	TIMED			

2.3 Star Slots

2.4 FID Slots

A Summary

A.1 Status

V&V Scientist	Jen Lauer
V&V Date (YYYY-MM-DD)	2012.10.04
V&V Edition	1
V&V Disposition and Status	OK
V&V Charge Time	8.463823715046

A.2 Comments