

V&V Reference Report

L2 ASCDS Version : 7.6.8.1

Observation 61279 - L2 Version 001
Chandra X-Ray Center

L2 Processing Date : Sep 6 2006

Contents

1	Front	2
2	OBI	3
2.1	OBI	3
2.1.1	Images	3
2.1.2	Bias	3
2.1.3	Parameters	4
2.1.4	Events	4
2.2	Compared Parameters	5
2.3	Aspect	6
2.4	Star Slots	8
2.5	FID Slots	8
A	Summary	9
A.1	Status	9
A.2	Comments	9

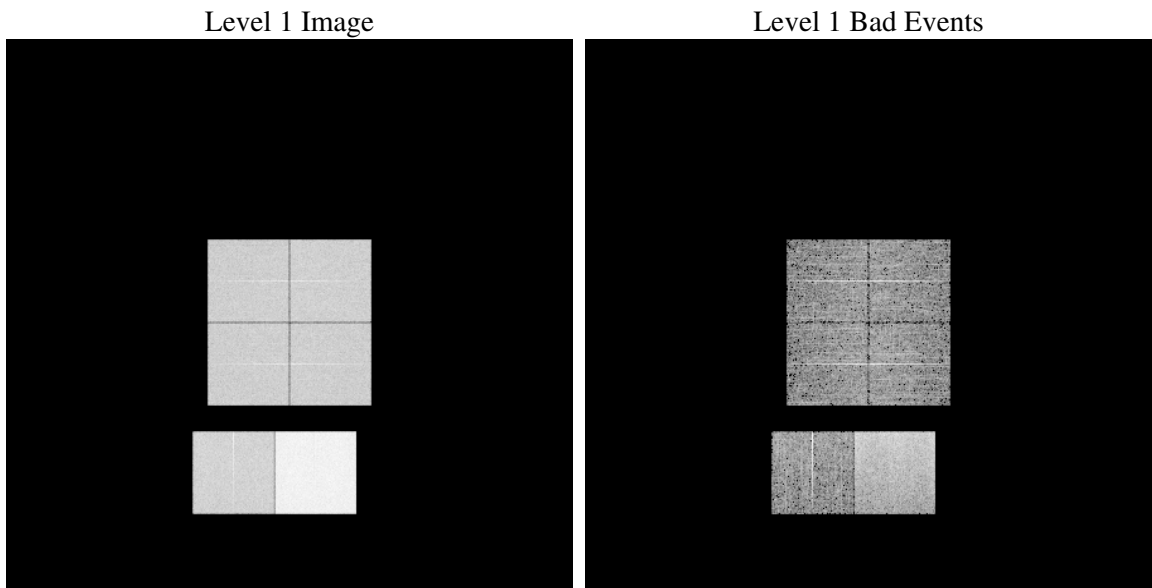
1 Front

seq_num	
obs_id	61279
title	ACIS-012367 diagnostics
observer	CHANDRA engineering request/realtime commanding
object	
dtcycle	0
cycle	P
ra_targ	0.0
dec_targ	0.0
ra_nom	150.03217336743
dec_nom	-29.993482956172
roll_nom	340.38972350313
revision	2
ontime	8464.0000078827
livetime	8356.823743374
ontime0	3385.4986733794
ontime1	3515.0248282254
ontime2	3323.8050032556
ontime3	3314.1146806031
ontime6	3644.665361926
ontime7	8464.0000078827
l2events	1315347

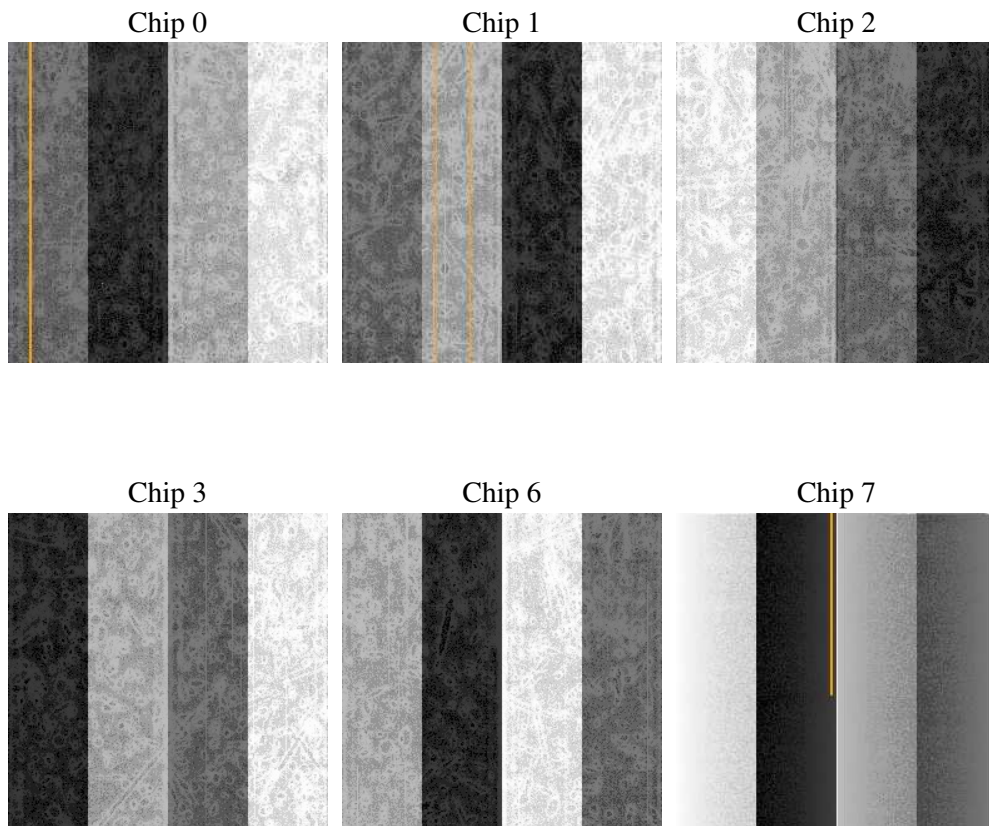
2 OBI

2.1 OBI

2.1.1 Images



2.1.2 Bias



2.1.3 Parameters

obi_num	0
ascdsver	7.6.8.1
caldsver	3.2.3
date	2006-09-06T07:02:58
revision	2

sched_exp_time	0.0
ontime	8465.4975321889
ontime0	3386.8813405484
ontime1	3516.5223525316
ontime2	3325.3025275618
ontime3	3315.5794277787
ontime6	3646.1628862321
ontime7	8465.4975321889
l1events	1563912

2.1.4 Events

	ccd 0	ccd 1	ccd 2	ccd 3	ccd 6	ccd 7
level 1 events	203305	210404	203221	203478	230190	513314
rejected events	24375	25011	25340	26656	27909	62951
rejected %	11%	11%	12%	13%	12%	12%

	ccd 0	ccd 1	ccd 2	ccd 3	ccd 6	ccd 7
grade 0 events	98310	102140	98755	98701	109746	81370
	48%	48%	48%	48%	47%	15%
grade 1 events	532	539	513	538	574	222
	0%	0%	0%	0%	0%	0%
grade 2 events	31637	32439	31248	31188	35115	135285
	15%	15%	15%	15%	15%	26%
grade 3 events	11386	11927	11223	11161	12559	33648
	5%	5%	5%	5%	5%	6%
grade 4 events	11433	11863	11205	11243	12678	33208
	5%	5%	5%	5%	5%	6%
grade 5 events	1670	1912	1647	1844	2075	8455
	0%	0%	0%	0%	0%	1%
grade 6 events	26164	27024	25450	24529	32183	166852
	12%	12%	12%	12%	13%	32%
grade 7 events	22173	22560	23180	24274	25260	54274
	10%	10%	11%	11%	10%	10%

2.2 Compared Parameters

Parameter	Planned	Actual	Parameter	Planned	Actual
Instrument	ACIS	ACIS	Obspar format version number	6	6
Detector	ACIS-012367	ACIS-012367	Obspar file type	PREDICTED	ACTUAL
Grating	NONE	NONE	Obspar update status	NONE	UPDATED
Data mode	FAINT	FAINT	On-chip summing requested	N	N
Observation mode	SECONDARY	SECONDARY	Subarray requested	NONE	NONE
Pointing RA	0	150.0321733674324	Alternating exposures requested	N	N
Pointing Dec	0	-29.99348295617205	Primary exposure time	0.000000	3.2
Pointing Roll	0.0	340.3897235031335			
SIM focus pos (mm)	-0.782348	-0.6828225247311905			
SIM defocus (mm)	0	0.8505141146731063			
SIM translation stage pos (mm)	-233.592463	250.466033080201			
SIM translation stage offset (mm)	0	-0.01005468664627074			
Observation start time	131394046.701	131394045.93245			
Observation start date	2002-03-01T18:20:47	2002-03-01T18:20:45			
Observation end time	131415356.452	131415355.68331			
Observation end date	2002-03-02T00:15:56	2002-03-02T00:15:55			
Read mode	TIMED	TIMED			

2.3 Aspect

2.4 Star Slots

2.5 FID Slots

A Summary

A.1 Status

V&V Scientist	Jen Lauer
V&V Date (YYYY-MM-DD)	2006.09.06
V&V Edition	1
V&V Disposition and Status	OK
V&V Charge Time	8.464

A.2 Comments