

V&V Reference Report

L2 ASCDS Version : 7.6.8.1

Observation 61277 - L2 Version 001
Chandra X-Ray Center

L2 Processing Date : Sep 6 2006

Contents

1	Front	2
2	OBI	3
2.1	OBI	3
2.1.1	Images	3
2.1.2	Bias	3
2.1.3	Parameters	4
2.1.4	Events	4
2.2	Compared Parameters	5
2.3	Aspect	6
2.4	Star Slots	8
2.5	FID Slots	8
A	Summary	9
A.1	Status	9
A.2	Comments	9

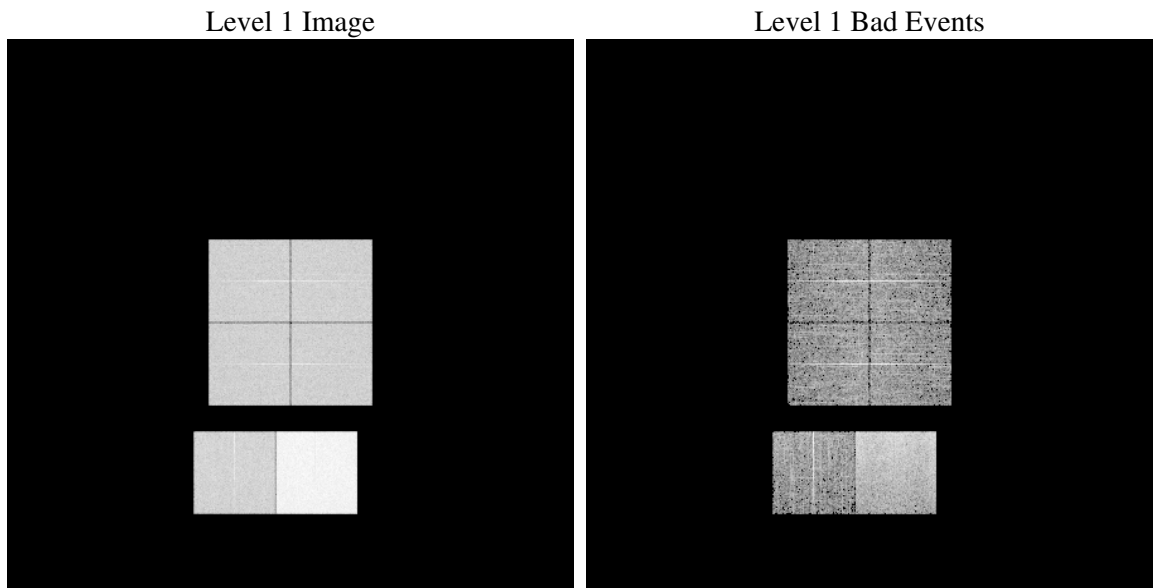
1 Front

seq_num	
obs_id	61277
title	ACIS-012367 diagnostics
observer	CHANDRA engineering request/realtime commanding
object	
dtcycle	0
cycle	P
ra_targ	0.0
dec_targ	0.0
ra_nom	281.97686469275
dec_nom	-32.978965238751
roll_nom	99.902808463649
revision	2
ontime	7792.0000072569
livetime	7693.3330113859
ontime0	3161.5901494175
ontime1	3223.2106301934
ontime2	3064.4414382726
ontime3	3066.6617394239
ontime6	3255.7023430318
ontime7	7792.0000072569
l2events	1215010

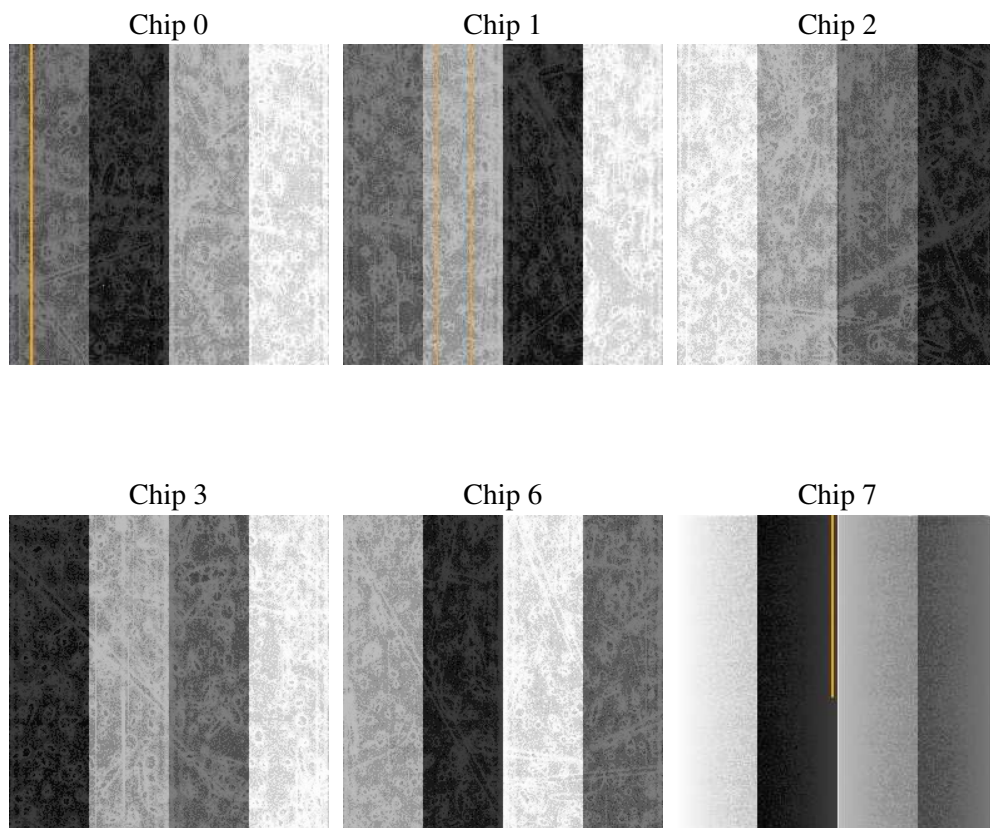
2 OBI

2.1 OBI

2.1.1 Images



2.1.2 Bias



2.1.3 Parameters

obi_num	0
ascdsver	7.6.8.1
caldsver	3.2.3
date	2006-09-06T17:55:04
revision	2

sched_exp_time	0.0
ontime	7794.5984650552
ontime0	3163.2496091425
ontime1	3224.82904993
ontime2	3066.0188180059
ontime3	3069.2601972222
ontime6	3257.2386827618
ontime7	7794.5984650552
l1events	1442650

2.1.4 Events

	ccd 0	ccd 1	ccd 2	ccd 3	ccd 6	ccd 7
level 1 events	190926	192993	187400	188299	206469	476563
rejected events	23188	23289	23770	24031	25486	55838
rejected %	12%	12%	12%	12%	12%	11%

	ccd 0	ccd 1	ccd 2	ccd 3	ccd 6	ccd 7
grade 0 events	92512	93534	91016	92151	98479	81626
	48%	48%	48%	48%	47%	17%
grade 1 events	509	472	481	453	486	196
	0%	0%	0%	0%	0%	0%
grade 2 events	29932	30013	28874	28700	31341	123344
	15%	15%	15%	15%	15%	25%
grade 3 events	10563	10696	10277	10416	11263	33119
	5%	5%	5%	5%	5%	6%
grade 4 events	10670	10816	10379	10445	11123	32467
	5%	5%	5%	5%	5%	6%
grade 5 events	1628	1642	1592	1620	1819	7782
	0%	0%	0%	0%	0%	1%
grade 6 events	24249	24645	23084	22697	28777	150370
	12%	12%	12%	12%	13%	31%
grade 7 events	20863	21175	21697	21817	23181	47659
	10%	10%	11%	11%	11%	10%

2.2 Compared Parameters

Parameter	Planned	Actual	Parameter	Planned	Actual
Instrument	ACIS	ACIS	Obspar format version number	6	6
Detector	ACIS-012367	ACIS-012367	Obspar file type	PREDICTED	ACTUAL
Grating	NONE	NONE	Obspar update status	NONE	UPDATED
Data mode	FAINT	FAINT	On-chip summing requested	N	N
Observation mode	SECONDARY	SECONDARY	Subarray requested	NONE	NONE
Pointing RA	0	281.9768646927491	Alternating exposures requested	N	N
Pointing Dec	0	-32.97896523875129	Primary exposure time	3.2	3.2
Pointing Roll	0.0	99.90280846364908			
SIM focus pos (mm)	-0.782348	-1.038866356238299			
SIM defocus (mm)	0	0.4944702831659975			
SIM translation stage pos (mm)	-233.592463	250.466033080201			
SIM translation stage offset (mm)	0	-0.01005468664627074			
Observation start time	131589813.508844	131589812.74037			
Observation start date	2002-03-04T00:43:34	2002-03-04T00:43:32			
Observation end time	131620905.860103	131620905.09163			
Observation end date	2002-03-04T09:21:46	2002-03-04T09:21:45			
Read mode	TIMED	TIMED			

2.3 Aspect

2.4 Star Slots

2.5 FID Slots

A Summary

A.1 Status

V&V Scientist	Beth Sundheim
V&V Date (YYYY-MM-DD)	2006.09.06
V&V Edition	1
V&V Disposition and Status	OK
V&V Charge Time	7.792

A.2 Comments