

# V&V Reference Report

## L2 ASCDS Version : 7.6.8.1

Observation 61271 - L2 Version 001  
Chandra X-Ray Center

L2 Processing Date : Sep 6 2006

## Contents

<b>1</b>	<b>Front</b>	<b>2</b>
<b>2</b>	<b>OBI</b>	<b>3</b>
2.1	OBI . . . . .	3
2.1.1	Images . . . . .	3
2.1.2	Bias . . . . .	3
2.1.3	Parameters . . . . .	4
2.1.4	Events . . . . .	4
2.2	Compared Parameters . . . . .	5
2.3	Aspect . . . . .	6
2.4	Star Slots . . . . .	8
2.5	FID Slots . . . . .	8
<b>A</b>	<b>Summary</b>	<b>9</b>
A.1	Status . . . . .	9
A.2	Comments . . . . .	9

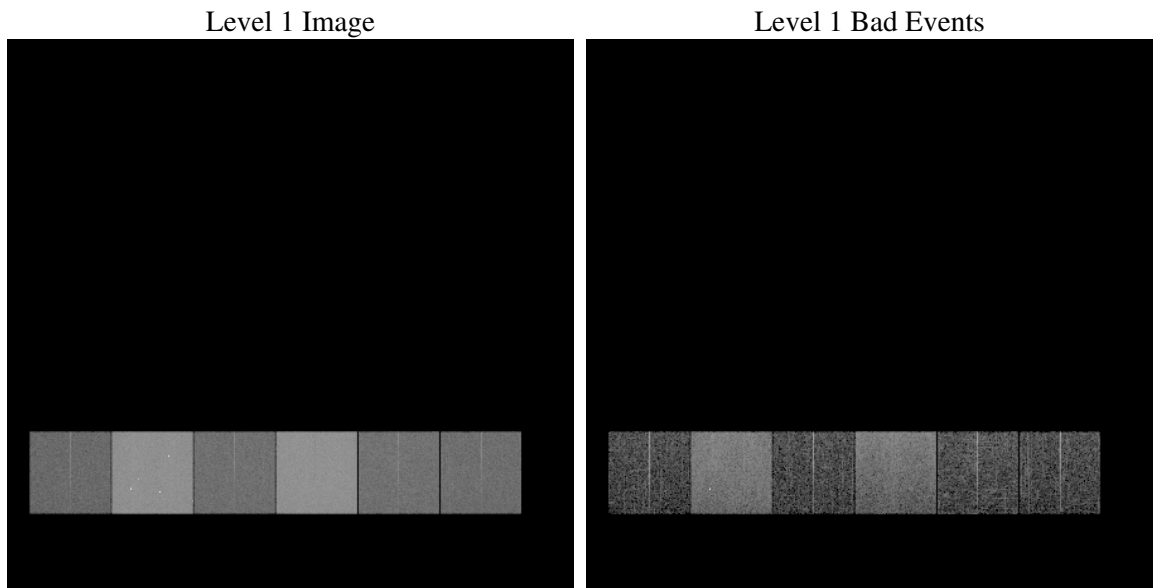
# 1 Front

seq_num	&#160
obs_id	61271
title	ACIS-456789 diagnostics
observer	CHANDRA engineering request/realtime commanding
object	&#160
dtcycle	0
cycle	P
ra_targ	0.0
dec_targ	0.0
ra_nom	100.01455648966
dec_nom	35.973920247758
roll_nom	261.52334569647
revision	2
ontime	7246.2594110966
livetime	7154.5029112597
ontime4	2543.7754683644
ontime5	7735.644222185
ontime6	2838.6685393453
ontime7	7246.2594110966
ontime8	2919.7765992433
ontime9	2799.624680385
l2events	1289609

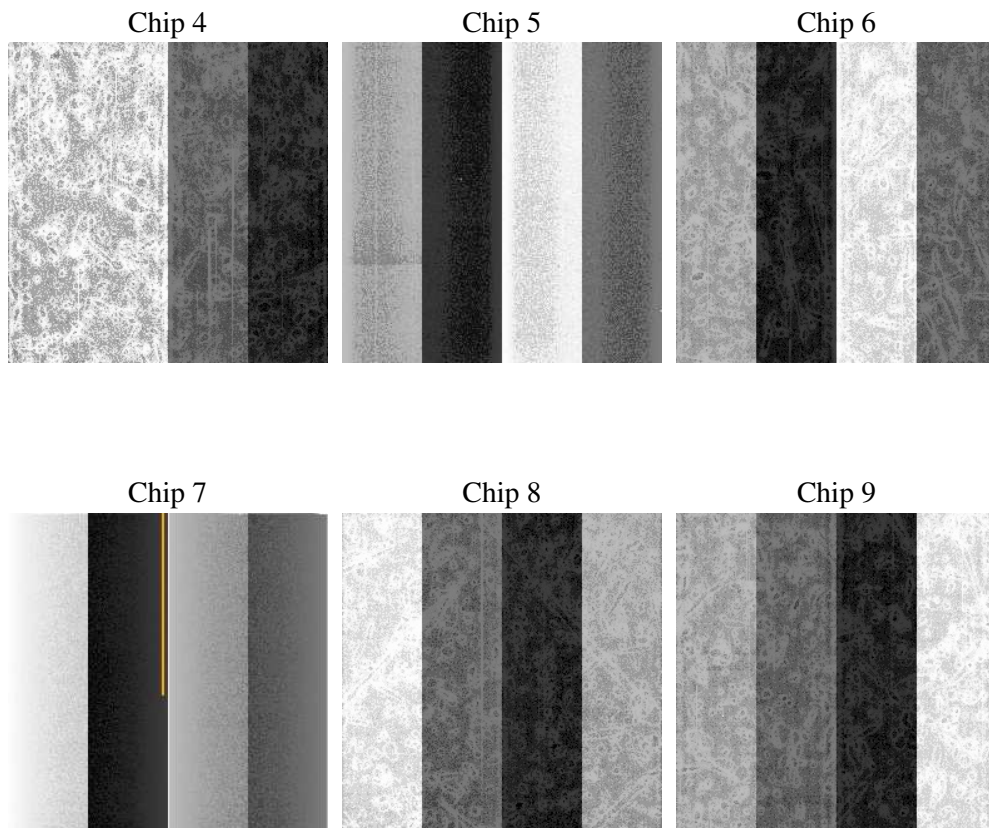
## 2 OBI

### 2.1 OBI

#### 2.1.1 Images



#### 2.1.2 Bias



### 2.1.3 Parameters

obi_num	0
ascdsver	7.6.8.1
caldsver	3.2.3
date	2006-09-06T20:54:21
revision	2

sched_exp_time	0.0
ontime	7305.2286449373
ontime4	2563.6602714956
ontime5	7794.6134261042
ontime6	2861.8354224712
ontime7	7305.2286449373
ontime8	2942.8614023626
ontime9	2819.7020720989
l1events	1571389

### 2.1.4 Events

	ccd 4	ccd 5	ccd 6	ccd 7	ccd 8	ccd 9
level 1 events	151945	436314	180211	443762	187700	171457
rejected events	22433	70661	23091	57793	26400	23003
rejected %	14%	16%	12%	13%	14%	13%

	ccd 4	ccd 5	ccd 6	ccd 7	ccd 8	ccd 9
grade 0 events	73697	47253	86357	72034	89414	81973
	48%	10%	47%	16%	47%	47%
grade 1 events	394	119	448	187	440	432
	0%	0%	0%	0%	0%	0%
grade 2 events	23011	175059	27414	116231	28640	26476
	15%	40%	15%	26%	15%	15%
grade 3 events	7985	12673	9838	29141	10310	9223
	5%	2%	5%	6%	5%	5%
grade 4 events	8050	11890	9804	28671	10394	9261
	5%	2%	5%	6%	5%	5%
grade 5 events	1398	7910	1670	7430	1844	1631
	0%	1%	0%	1%	0%	0%
grade 6 events	17771	121589	24936	142989	23848	22611
	11%	27%	13%	32%	12%	13%
grade 7 events	19639	59821	19744	47079	22810	19850
	12%	13%	10%	10%	12%	11%

## 2.2 Compared Parameters

Parameter	Planned	Actual	Parameter	Planned	Actual
Instrument	ACIS	ACIS	Obspar format version number	6	6
Detector	ACIS-456789	ACIS-456789	Obspar file type	PREDICTED	ACTUAL
Grating	NONE	NONE	Obspar update status	NONE	UPDATED
Data mode	FAINT	FAINT	On-chip summing requested	N	N
Observation mode	SECONDARY	SECONDARY	Subarray requested	NONE	NONE
Pointing RA	0	100.0145564896595	Alternating exposures requested	N	N
Pointing Dec	0	35.97392024775765	Primary exposure time	0.000000	3.2
Pointing Roll	0.0	261.5233456964696			
SIM focus pos (mm)	-0.684267	-0.7809083437167272			
SIM defocus (mm)	0	0.7524282956875696			
SIM translation stage pos (mm)	-190.132523	250.466033080201			
SIM translation stage offset (mm)	0	-0.01005468664627074			
Observation start time	132079740.979	132079740.21019			
Observation start date	2002-03-09T16:49:01	2002-03-09T16:49:00			
Observation end time	132101050.73	132101049.96105			
Observation end date	2002-03-09T22:44:11	2002-03-09T22:44:09			
Read mode	TIMED	TIMED			

## 2.3 Aspect



## **2.4 Star Slots**

## **2.5 FID Slots**



## A Summary

### A.1 Status

V&V Scientist	Jen Lauer
V&V Date (YYYY-MM-DD)	2006.09.07
V&V Edition	1
V&V Disposition and Status	OK
V&V Charge Time	7.24625941

### A.2 Comments