

# V&V Reference Report

## L2 ASCDS Version : 8.4.5

Observation 61264 - L2 Version 3  
Chandra X-Ray Center

L2 Processing Date : Oct 4 2012

## Contents

<b>1</b>	<b>Front</b>	<b>2</b>
<b>2</b>	<b>OBI</b>	<b>3</b>
2.1	OBI . . . . .	3
2.1.1	Images . . . . .	3
2.1.2	Bias . . . . .	3
2.1.3	Parameters . . . . .	4
2.1.4	Events . . . . .	4
2.2	Compared Parameters . . . . .	5
2.3	Star Slots . . . . .	6
2.4	FID Slots . . . . .	6
<b>A</b>	<b>Summary</b>	<b>7</b>
A.1	Status . . . . .	7
A.2	Comments . . . . .	7

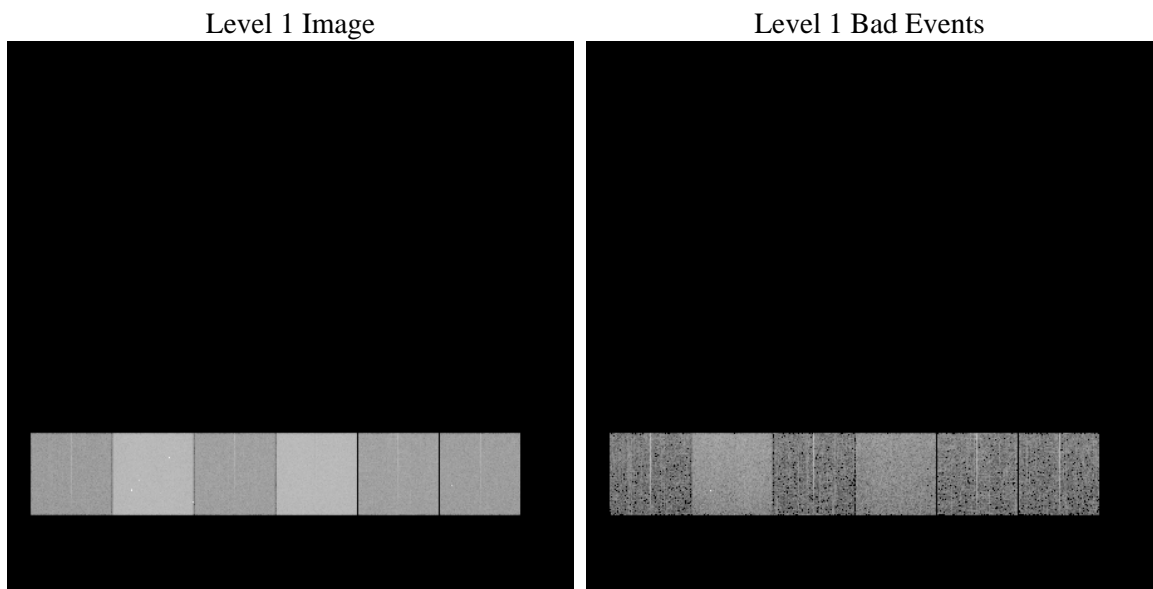
# 1 Front

seq_num	&#160	Sequence number
obs_id	61264	Observation id
title	ACIS-456789 diagnostics	Proposal title
observer	CHANDRA engineering request/realtime commanding	Principal investig
object	&#160	Source name
dtcycle	0	&#160
cycle	P	events from which exps? Prim/Second/Both
ra_targ	0.0	Observer's specified target RA [deg]
dec_targ	0.0	Observer's specified target Dec [deg]
ra_nom	150.02761950023	Nominal RA [deg]
dec_nom	-18.011391312458	Nominal Dec [deg]
roll_nom	303.78898196453	Nominal Roll [deg]
revision	3	Processing version of data
ontime	6712.1251659989	Sum of GTIs [s]
livetime	6627.1321955905	Livetime [s]
ontime4	2456.7057526112	Sum of GTIs [s]
ontime5	7253.3581625521	Sum of GTIs [s]
ontime6	2690.0113151371	Sum of GTIs [s]
ontime7	6712.1251659989	Sum of GTIs [s]
ontime8	2719.0985951424	Sum of GTIs [s]
ontime9	2557.1779922843	Sum of GTIs [s]
l2events	1217959	Number of level 2 events

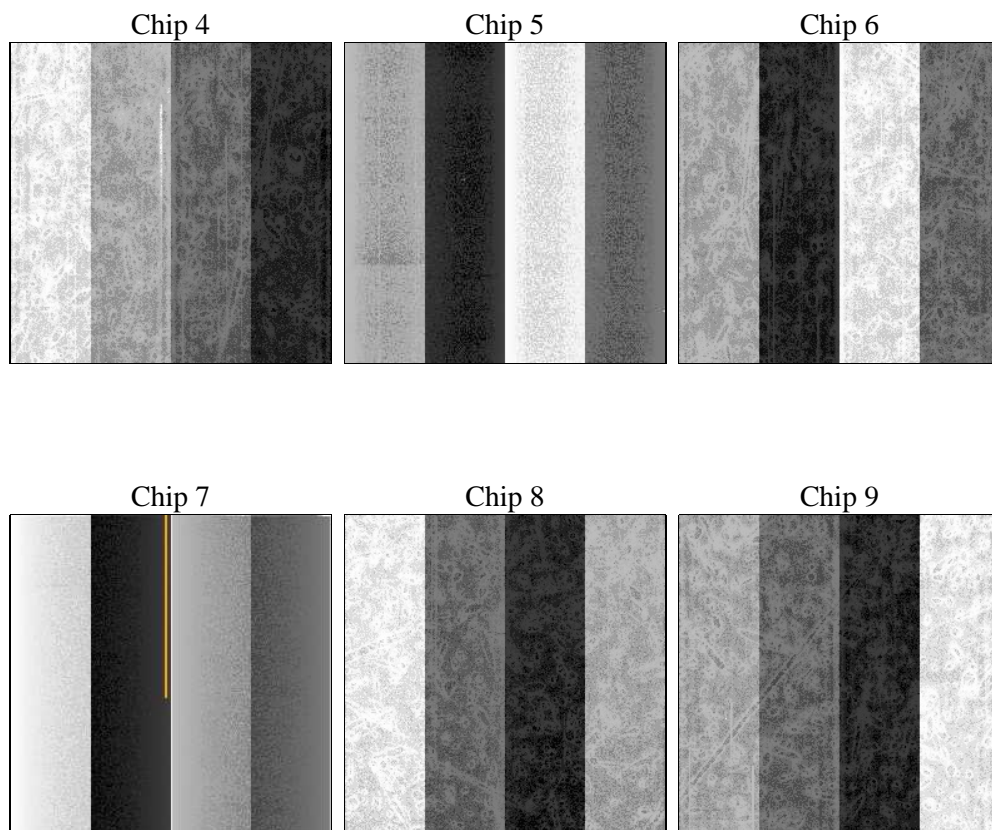
## 2 OBI

### 2.1 OBI

#### 2.1.1 Images



#### 2.1.2 Bias



### 2.1.3 Parameters

obi_num	2	Obi number	sched_exp_time	0.0	[s] Scheduled observation exposure time
ascdsver	8.4.5	Processing system revision	ontime	6712.1251659989	Sum of GTIs [s]
caldsver	4.5.2	&#160	ontime4	2456.7057526112	Sum of GTIs [s]
date	2012-10-04T10:21:26	Date and time of file creation	ontime5	7253.3581625521	Sum of GTIs [s]
revision	3	Processing version of data	ontime6	2690.0113151371	Sum of GTIs [s]
			ontime7	6712.1251659989	Sum of GTIs [s]
			ontime8	2719.0985951424	Sum of GTIs [s]
			ontime9	2557.1779922843	Sum of GTIs [s]
			l1events	1450104	Number of level 1 events

### 2.1.4 Events

	ccd 4	ccd 5	ccd 6	ccd 7	ccd 8	ccd 9		ccd 4	ccd 5	ccd 6	ccd 7	ccd 8	ccd 9
level 1 events	145941	401021	168709	405350	173170	155913	grade 0 events	71073	84628	80784	92781	82546	74166
rejected events	20410	51476	20702	36836	22957	20354		48%	21%	47%	22%	47%	47%
rejected %	13%	12%	12%	9%	13%	13%	grade 1 events	345	298	365	243	409	414
								0%	0%	0%	0%	0%	0%
							grade 2 events	22143	124154	25575	81498	26641	24023
								15%	30%	15%	20%	15%	15%
							grade 3 events	7721	22383	9234	37310	9489	8489
								5%	5%	5%	9%	5%	5%
							grade 4 events	7619	22275	8962	36938	9314	8281
								5%	5%	5%	9%	5%	5%
							grade 5 events	1353	9377	1620	7452	1752	1426
								0%	2%	0%	1%	1%	0%
							grade 6 events	16975	96105	23452	119987	22223	20600
								11%	23%	13%	29%	12%	13%
							grade 7 events	18712	41801	18717	29141	20796	18514
								12%	10%	11%	7%	12%	11%

## 2.2 Compared Parameters

Parameter	Planned	Actual
Instrument	ACIS	ACIS
Detector	ACIS-456789	ACIS-456789
Grating	NONE	NONE
Data mode	FAINT	FAINT
Observation mode	SECONDARY	SECONDARY
[deg] Pointing RA	0	150.027619500226
[deg] Pointing Dec	0	-18.01139131245848
[deg] Pointing Roll	0.0	303.7889819645251
[mm] SIM focus pos	-0.684267	-0.7809083437167272
[mm] SIM defocus	0	0.7524282956875696
[mm] SIM translation stage pos	-190.132523	250.466033080201
[mm] SIM translation stage offset	0	-0.01005468664627074
[s] Observation start time (MET)	132727290.905	132727290.13641
Observation start date	2002-03-17T04:41:31	2002-03-17T04:41:30
[s] Observation end time (MET)	132765281.506	132765280.73795
Observation end date	2002-03-17T15:14:42	2002-03-17T15:14:40
Read mode	TIMED	TIMED

Parameter	Planned	Actual
Obspar format version number	7	7
Obspar file type	PREDICTED	ACTUAL
Obspar update status	NONE	UPDATED
On-chip summing requested	N	N
Subarray requested	NONE	NONE
Alternating exposures requested	N	N
[s] Primary exposure time	0.000000	3.2

## **2.3 Star Slots**

## **2.4 FID Slots**

## A Summary

### A.1 Status

V&V Scientist	Beth Sundheim
V&V Date (YYYY-MM-DD)	2012.10.05
V&V Edition	1
V&V Disposition and Status	OK
V&V Charge Time	6.7121251659989

### A.2 Comments