

V&V Reference Report

L2 ASCDS Version : 7.6.8.1

Observation 61258 - L2 Version 001
Chandra X-Ray Center

L2 Processing Date : Sep 8 2006

Contents

1	Front	2
2	OBI	3
2.1	OBI	3
2.1.1	Images	3
2.1.2	Bias	3
2.1.3	Parameters	4
2.1.4	Events	4
2.2	Compared Parameters	5
2.3	Aspect	6
2.4	Star Slots	8
2.5	FID Slots	8
A	Summary	9
A.1	Status	9
A.2	Comments	9

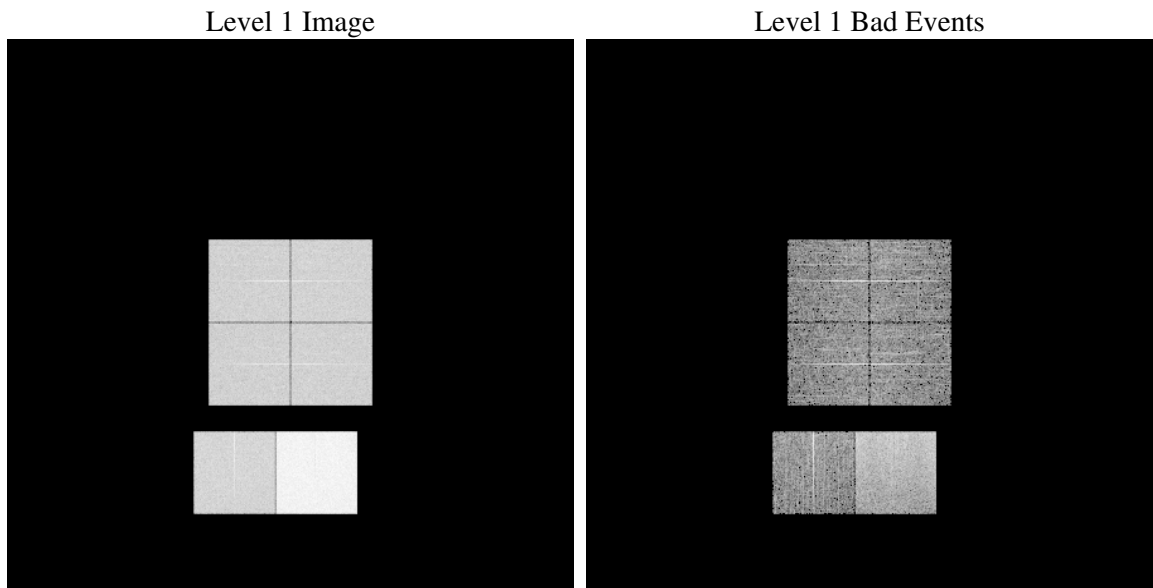
1 Front

seq_num	
obs_id	61258
title	ACIS-012367 diagnostics
observer	CHANDRA engineering request/realtime commanding
object	
dtcycle	0
cycle	P
ra_targ	0.0
dec_targ	0.0
ra_nom	181.97518761949
dec_nom	12.984663364868
roll_nom	179.54644388698
revision	2
ontime	8406.4000078291
livetime	8299.9531092036
ontime0	3504.3757732362
ontime1	3574.1055881828
ontime2	3389.3667271435
ontime3	3423.267842859
ontime6	3663.3081688583
ontime7	8406.4000078291
l2events	1314607

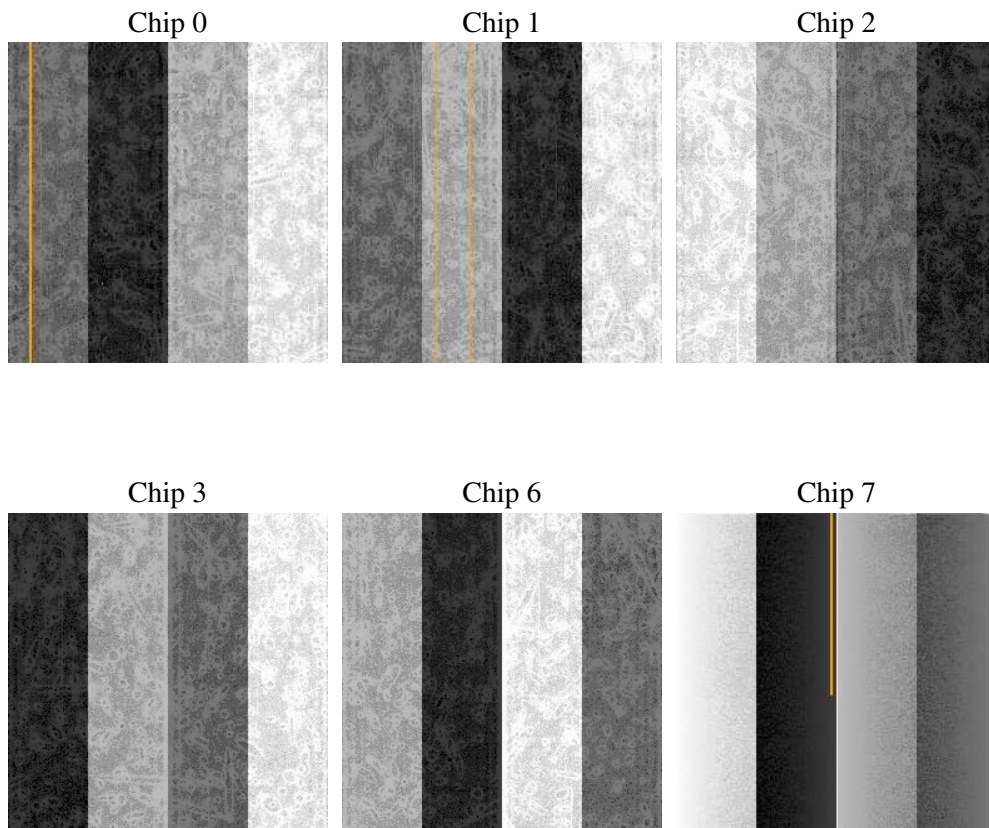
2 OBI

2.1 OBI

2.1.1 Images



2.1.2 Bias



2.1.3 Parameters

obi_num	1
ascdsver	7.6.8.1
caldbver	3.2.3
date	2006-09-08T13:22:28
revision	2

sched_exp_time	0.0
ontime	8468.7348128259
ontime0	3529.486810863
ontime1	3604.0305711329
ontime2	3419.2917300165
ontime3	3451.7020503134
ontime6	3698.0191367269
ontime7	8468.7348128259
l1events	1563854

2.1.4 Events

	ccd 0	ccd 1	ccd 2	ccd 3	ccd 6	ccd 7
level 1 events	208627	212985	203968	207000	229602	501672
rejected events	25185	25793	25232	25826	28432	62443
rejected %	12%	12%	12%	12%	12%	12%

	ccd 0	ccd 1	ccd 2	ccd 3	ccd 6	ccd 7
grade 0 events	101947	103684	100143	102248	110845	81092
	48%	48%	49%	49%	48%	16%
grade 1 events	527	467	483	502	566	219
	0%	0%	0%	0%	0%	0%
grade 2 events	32715	33533	31904	31904	35158	133821
	15%	15%	15%	15%	15%	26%
grade 3 events	11676	11978	11237	11510	12399	32749
	5%	5%	5%	5%	5%	6%
grade 4 events	11594	12028	11381	11544	12519	32630
	5%	5%	5%	5%	5%	6%
grade 5 events	1719	1772	1607	1723	1972	8040
	0%	0%	0%	0%	0%	1%
grade 6 events	26834	27498	25746	25459	32207	162144
	12%	12%	12%	12%	14%	32%
grade 7 events	21615	22025	21467	22110	23936	50977
	10%	10%	10%	10%	10%	10%

2.2 Compared Parameters

Parameter	Planned	Actual	Parameter	Planned	Actual
Instrument	ACIS	ACIS	Obspar format version number	6	6
Detector	ACIS-012367	ACIS-012367	Obspar file type	PREDICTED	ACTUAL
Grating	NONE	NONE	Obspar update status	NONE	UPDATED
Data mode	FAINT	FAINT	On-chip summing requested	N	N
Observation mode	SECONDARY	SECONDARY	Subarray requested	NONE	NONE
Pointing RA	0	181.9751876194944	Alternating exposures requested	N	N
Pointing Dec	0	12.98466336486795	Primary exposure time	3.2	3.2
Pointing Roll	0.0	179.5464438869829			
SIM focus pos (mm)	-0.782348	-0.6828225247311905			
SIM defocus (mm)	0	0.8505141146731063			
SIM translation stage pos (mm)	-233.592463	250.466033080201			
SIM translation stage offset (mm)	0	-0.01005468664627074			
Observation start time	133217913.324763	133217912.55628			
Observation start date	2002-03-22T20:58:33	2002-03-22T20:58:32			
Observation end time	133240440.775677	133240440.0072			
Observation end date	2002-03-23T03:14:01	2002-03-23T03:14:00			
Read mode	TIMED	TIMED			

2.3 Aspect

2.4 Star Slots

2.5 FID Slots

A Summary

A.1 Status

V&V Scientist	Beth Sundheim
V&V Date (YYYY-MM-DD)	2006.09.08
V&V Edition	1
V&V Disposition and Status	OK
V&V Charge Time	8.4064

A.2 Comments