

V&V Reference Report

L2 ASCDS Version : 8.4.5

Observation 61253 - L2 Version 3
Chandra X-Ray Center

L2 Processing Date : Oct 4 2012

Contents

1	Front	2
2	OBI	3
2.1	OBI	3
2.1.1	Images	3
2.1.2	Bias	3
2.1.3	Parameters	4
2.1.4	Events	4
2.2	Compared Parameters	5
2.3	Star Slots	6
2.4	FID Slots	6
A	Summary	7
A.1	Status	7
A.2	Comments	7

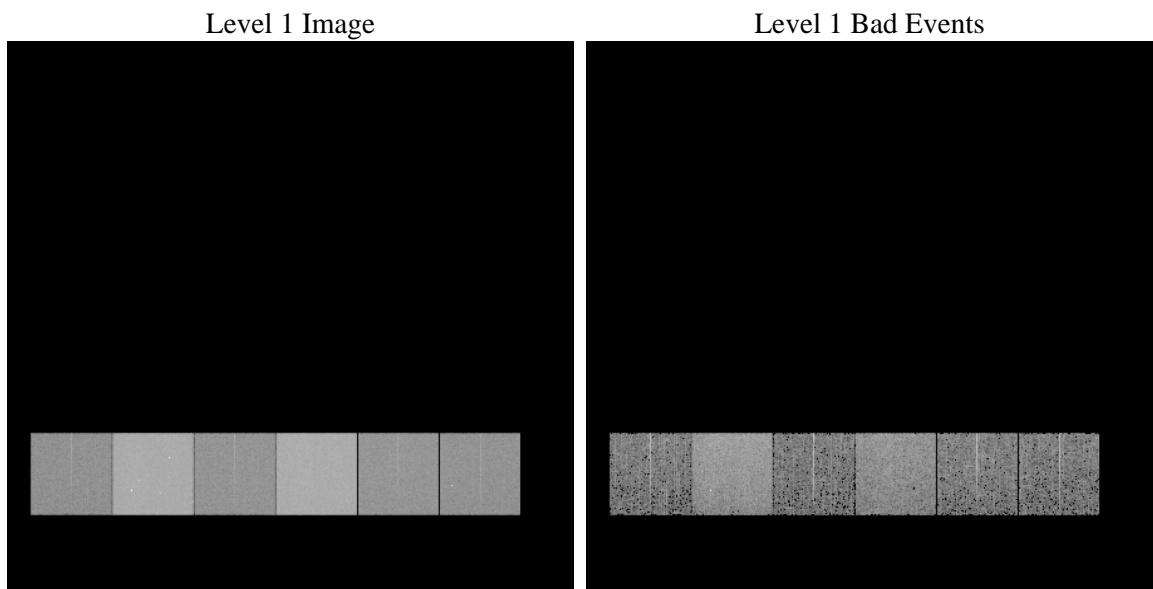
1 Front

seq_num	 	Sequence number
obs_id	61253	Observation id
title	ACIS-456789 diagnostics	Proposal title
observer	CHANDRA engineering request/realtime commanding	Principal investig
object	 	Source name
dtcycle	0	
cycle	P	events from which exps? Prim/Second/Both
ra_targ	0.0	Observer's specified target RA [deg]
dec_targ	0.0	Observer's specified target Dec [deg]
ra_nom	134.50030478351	Nominal RA [deg]
dec_nom	49.471341045312	Nominal Dec [deg]
roll_nom	237.59087187102	Nominal Roll [deg]
revision	3	Processing version of data
ontime	6647.982510969	Sum of GTIs [s]
livetime	6563.8017534807	Livetime [s]
ontime4	2537.7315823138	Sum of GTIs [s]
ontime5	7123.7251403779	Sum of GTIs [s]
ontime6	2712.7467850149	Sum of GTIs [s]
ontime7	6647.982510969	Sum of GTIs [s]
ontime8	2806.737144202	Sum of GTIs [s]
ontime9	2647.8603120893	Sum of GTIs [s]
l2events	1229371	Number of level 2 events

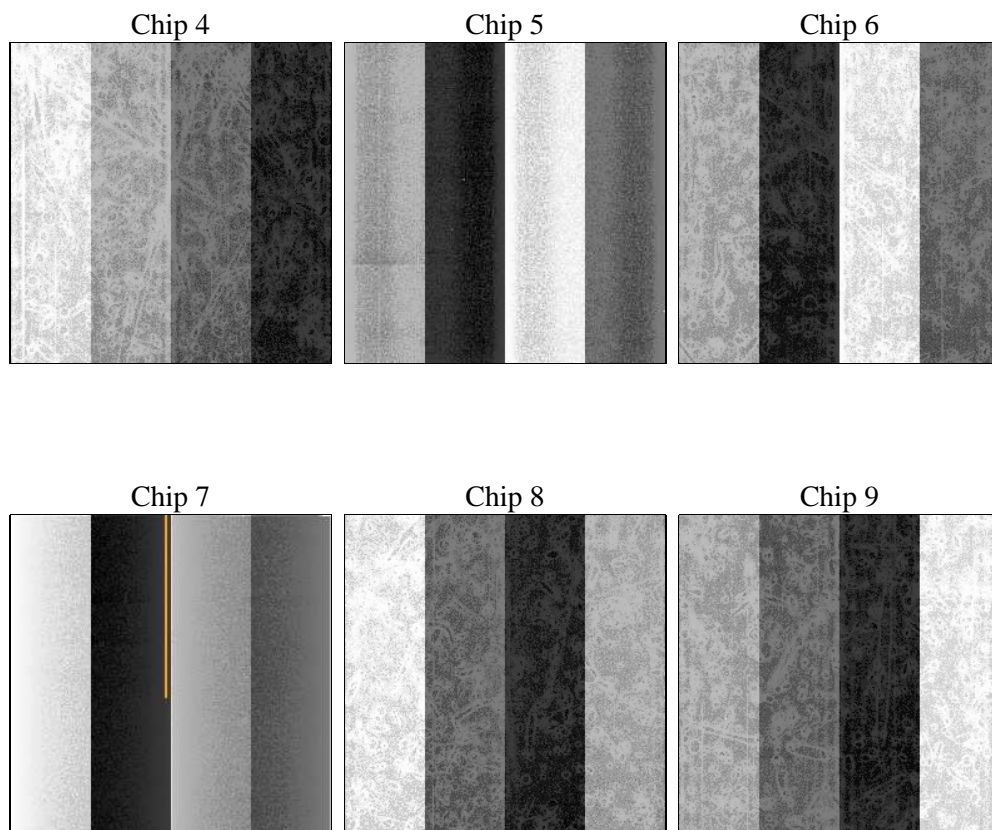
2 OBI

2.1 OBI

2.1.1 Images



2.1.2 Bias



2.1.3 Parameters

obi_num	0	Obi number	sched_exp_time	0.0	[s] Scheduled observation exposure time
ascdsver	8.4.5	Processing system revision	ontime	6647.982510969	Sum of GTIs [s]
caldsver	4.5.2	 	ontime4	2537.7315823138	Sum of GTIs [s]
date	2012-10-04T17:47:30	Date and time of file creation	ontime5	7123.7251403779	Sum of GTIs [s]
revision	3	Processing version of data	ontime6	2712.7467850149	Sum of GTIs [s]
			ontime7	6647.982510969	Sum of GTIs [s]
			ontime8	2806.737144202	Sum of GTIs [s]
			ontime9	2647.8603120893	Sum of GTIs [s]
			l1events	1450795	Number of level 1 events

2.1.4 Events

	ccd 4	ccd 5	ccd 6	ccd 7	ccd 8	ccd 9		ccd 4	ccd 5	ccd 6	ccd 7	ccd 8	ccd 9
level 1 events	150945	392054	169690	398946	177901	161259	grade 0 events	73640	86301	81626	93415	85689	77918
rejected events	20776	47724	19418	34865	22270	19988		48%	22%	48%	23%	48%	48%
rejected %	13%	12%	11%	8%	12%	12%	grade 1 events	358	707	364	234	408	396
								0%	0%	0%	0%	0%	0%
							grade 2 events	23049	120898	26284	80537	27346	24799
								15%	30%	15%	20%	15%	15%
							grade 3 events	7952	22542	9301	37139	9930	8698
								5%	5%	5%	9%	5%	5%
							grade 4 events	7895	22095	9251	36929	9742	8637
								5%	5%	5%	9%	5%	5%
							grade 5 events	1297	8729	1496	7053	1626	1403
								0%	2%	0%	1%	0%	0%
							grade 6 events	17633	92494	23810	116244	22924	21219
								11%	23%	14%	29%	12%	13%
							grade 7 events	19121	38288	17558	27395	20236	18189
								12%	9%	10%	6%	11%	11%

2.2 Compared Parameters

Parameter	Planned	Actual	Parameter	Planned	Actual
Instrument	ACIS	ACIS	Obspar format version number	7	7
Detector	ACIS-456789	ACIS-456789	Obspar file type	PREDICTED	ACTUAL
Grating	NONE	NONE	Obspar update status	NONE	UPDATED
Data mode	FAINT	FAINT	On-chip summing requested	N	N
Observation mode	SECONDARY	SECONDARY	Subarray requested	NONE	NONE
[deg] Pointing RA	0	134.5003047835138	Alternating exposures requested	N	N
[deg] Pointing Dec	0	49.47134104531179	[s] Primary exposure time	0.000000	3.2
[deg] Pointing Roll	0.0	237.5908718710162			
[mm] SIM focus pos	-0.684267	-0.6828225247311905			
[mm] SIM defocus	0	0.8505141146731063			
[mm] SIM translation stage pos	-190.132523	250.466033080201			
[mm] SIM translation stage offset	0	-0.01005468664627074			
[s] Observation start time (MET)	133643282.192	133643281.42352			
Observation start date	2002-03-27T19:08:02	2002-03-27T19:08:01			
[s] Observation end time (MET)	133654565.392	133654564.62398			
Observation end date	2002-03-27T22:16:05	2002-03-27T22:16:04			
Read mode	TIMED	TIMED			

2.3 Star Slots

2.4 FID Slots

A Summary

A.1 Status

V&V Scientist	Beth Sundheim
V&V Date (YYYY-MM-DD)	2012.10.09
V&V Edition	1
V&V Disposition and Status	OK
V&V Charge Time	6.647982510969

A.2 Comments