

# V&V Reference Report

## L2 ASCDS Version : 7.6.8.1

Observation 61248 - L2 Version 001  
Chandra X-Ray Center

L2 Processing Date : Sep 9 2006

## Contents

<b>1</b>	<b>Front</b>	<b>2</b>
<b>2</b>	<b>OBI</b>	<b>3</b>
2.1	OBI . . . . .	3
2.1.1	Images . . . . .	3
2.1.2	Bias . . . . .	3
2.1.3	Parameters . . . . .	4
2.1.4	Events . . . . .	4
2.2	Compared Parameters . . . . .	5
2.3	Aspect . . . . .	6
2.4	Star Slots . . . . .	8
2.5	FID Slots . . . . .	8
<b>A</b>	<b>Summary</b>	<b>9</b>
A.1	Status . . . . .	9
A.2	Comments . . . . .	9

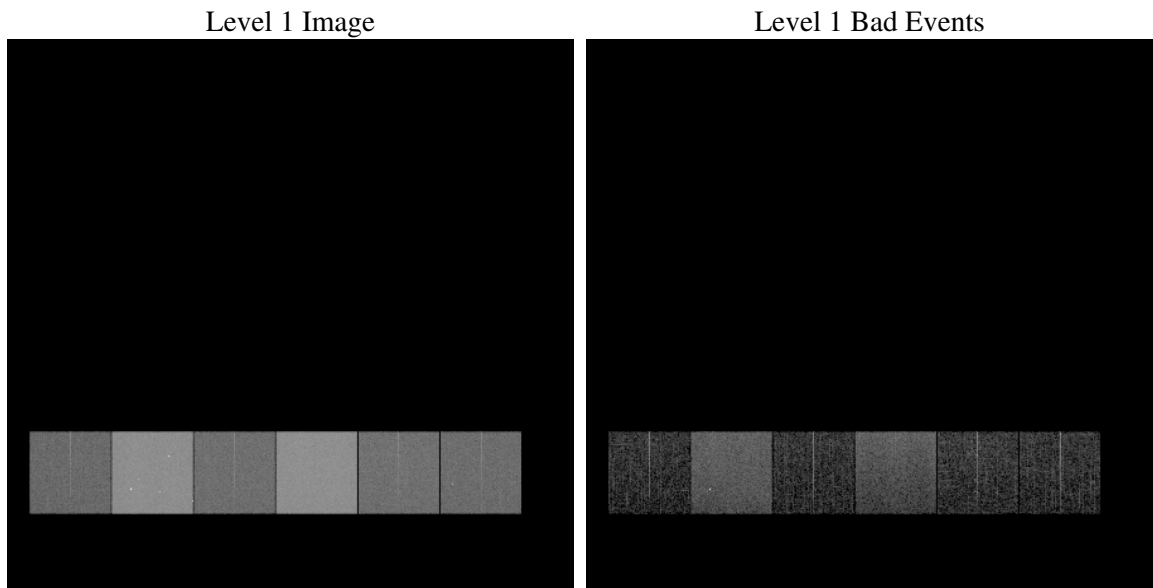
# 1 Front

seq_num	&#160
obs_id	61248
title	ACIS-456789 diagnostics
observer	CHANDRA engineering request/realtime commanding
object	&#160
dtcycle	0
cycle	P
ra_targ	0.0
dec_targ	0.0
ra_nom	190.02526699007
dec_nom	-22.98332120553
roll_nom	2.8313941585576
revision	2
ontime	7368.4874391556
livetime	7275.1832144305
ontime4	2714.5504183918
ontime5	7903.2874231935
ontime6	2944.6230183989
ontime7	7368.4874391556
ontime8	3025.6748768687
ontime9	2840.7868678868
l2events	1303826

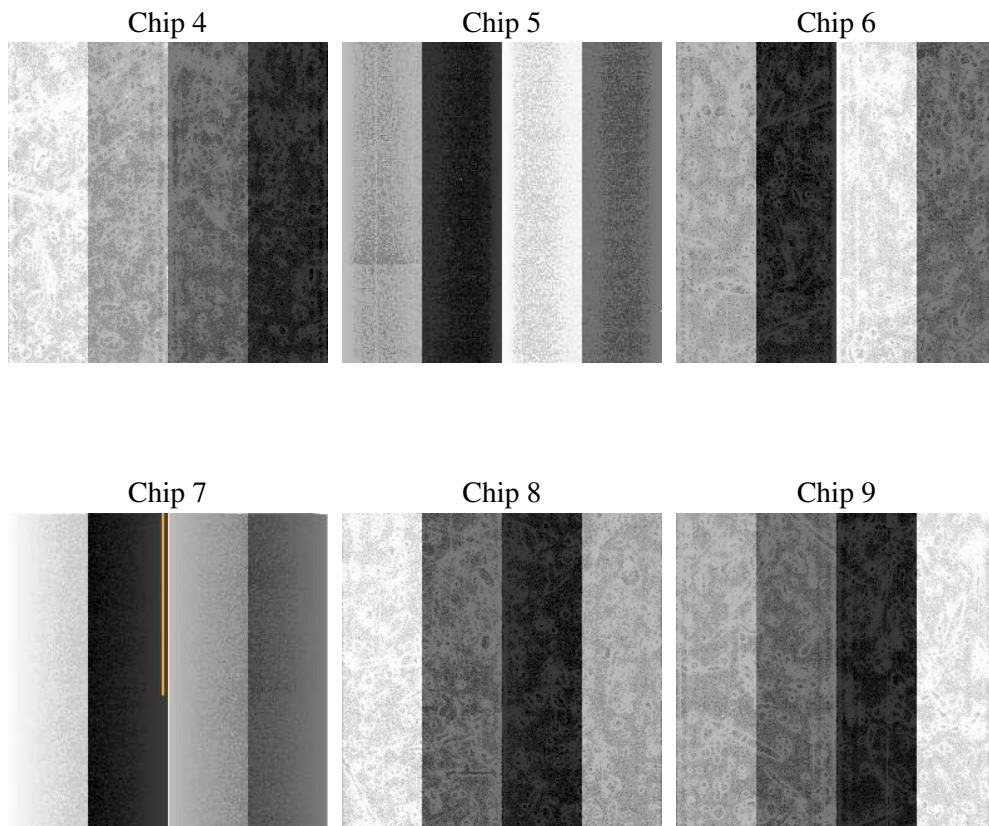
## 2 OBI

### 2.1 OBI

#### 2.1.1 Images



#### 2.1.2 Bias



### 2.1.3 Parameters

obi_num	0
ascdsver	7.6.8.1
caldsver	3.2.3
date	2006-09-09T18:26:16
revision	2

sched_exp_time	0.0
ontime	7370.0490227491
ontime4	2715.9888819903
ontime5	7904.8079667836
ontime6	2946.1025220007
ontime7	7370.0490227491
ontime8	3027.1284221113
ontime9	2842.3894914836
l1events	1569613

### 2.1.4 Events

	ccd 4	ccd 5	ccd 6	ccd 7	ccd 8	ccd 9
level 1 events	157709	430309	182178	438721	189562	171134
rejected events	21221	66424	21273	51813	24388	22215
rejected %	13%	15%	11%	11%	12%	12%

	ccd 4	ccd 5	ccd 6	ccd 7	ccd 8	ccd 9
grade 0 events	77306	44119	87675	71712	91029	81926
	49%	10%	48%	16%	48%	47%
grade 1 events	441	127	407	165	444	443
	0%	0%	0%	0%	0%	0%
grade 2 events	23858	174416	27958	116346	29177	26309
	15%	40%	15%	26%	15%	15%
grade 3 events	8501	12044	9973	29363	10455	9087
	5%	2%	5%	6%	5%	5%
grade 4 events	8296	11914	9989	28425	10356	9234
	5%	2%	5%	6%	5%	5%
grade 5 events	1352	8024	1553	7095	1794	1605
	0%	1%	0%	1%	0%	0%
grade 6 events	18527	121392	25310	141062	24157	22363
	11%	28%	13%	32%	12%	13%
grade 7 events	19428	58273	19313	44553	22150	20167
	12%	13%	10%	10%	11%	11%

## 2.2 Compared Parameters

Parameter	Planned	Actual	Parameter	Planned	Actual
Instrument	ACIS	ACIS	Obspar format version number	6	6
Detector	ACIS-456789	ACIS-456789	Obspar file type	PREDICTED	ACTUAL
Grating	NONE	NONE	Obspar update status	NONE	UPDATED
Data mode	FAINT	FAINT	On-chip summing requested	N	N
Observation mode	SECONDARY	SECONDARY	Subarray requested	NONE	NONE
Pointing RA	0	190.025266990065	Alternating exposures requested	N	N
Pointing Dec	0	-22.98332120552958	Primary exposure time	0.000000	3.2
Pointing Roll	0.0	2.831394158557592			
SIM focus pos (mm)	-0.684267	-0.6828225247311905			
SIM defocus (mm)	0	0.8505141146731063			
SIM translation stage pos (mm)	-190.132523	250.466033080201			
SIM translation stage offset (mm)	0	-0.01005468664627074			
Observation start time	133902857.302	133902856.53404			
Observation start date	2002-03-30T19:14:17	2002-03-30T19:14:16			
Observation end time	133926456.903	133926456.135			
Observation end date	2002-03-31T01:47:37	2002-03-31T01:47:36			
Read mode	TIMED	TIMED			

## 2.3 Aspect



## **2.4 Star Slots**

## **2.5 FID Slots**

## A Summary

### A.1 Status

V&V Scientist	Jen Lauer
V&V Date (YYYY-MM-DD)	2006.09.10
V&V Edition	1
V&V Disposition and Status	OK
V&V Charge Time	7.36848743

### A.2 Comments