

V&V Reference Report

L2 ASCDS Version : 8.4.5

Observation 61244 - L2 Version 3
Chandra X-Ray Center

L2 Processing Date : Oct 4 2012

Contents

1	Front	2
2	OBI	3
2.1	OBI	3
2.1.1	Images	3
2.1.2	Bias	3
2.1.3	Parameters	4
2.1.4	Events	4
2.2	Compared Parameters	5
2.3	Star Slots	6
2.4	FID Slots	6
A	Summary	7
A.1	Status	7
A.2	Comments	7

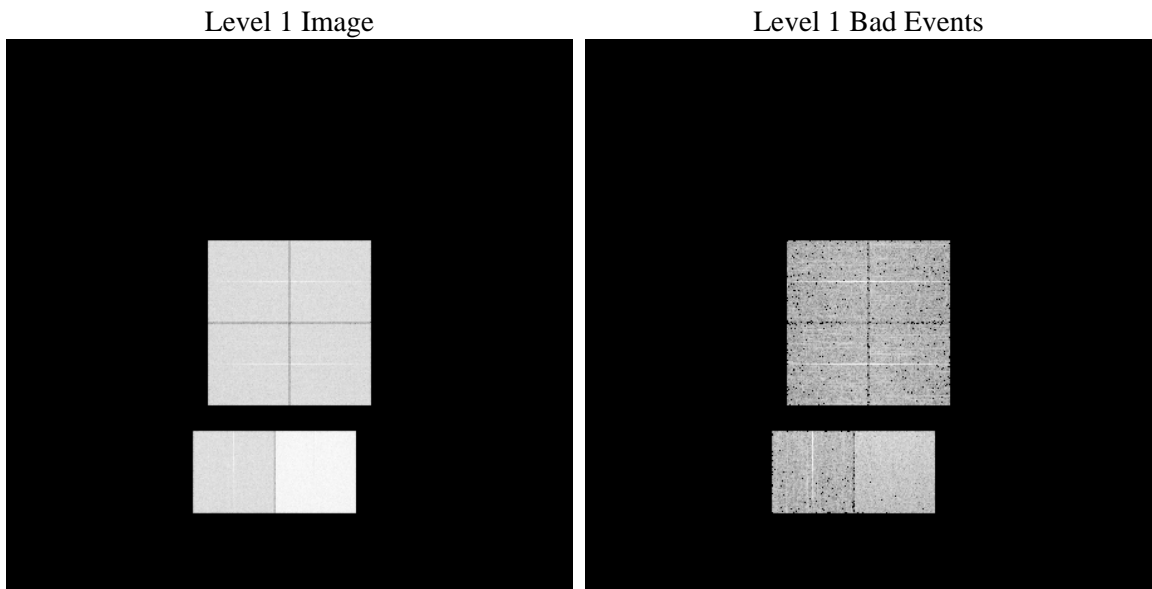
1 Front

seq_num	 	Sequence number
obs_id	61244	Observation id
title	ACIS-012367 diagnostics	Proposal title
observer	CHANDRA engineering request/realtime commanding	Principal investig
object	 	Source name
dtcycle	0	
cycle	P	events from which exps? Prim/Second/Both
ra_targ	0.0	Observer's specified target RA [deg]
dec_targ	0.0	Observer's specified target Dec [deg]
ra_nom	275.9821736324	Nominal RA [deg]
dec_nom	-1.9775434869074	Nominal Dec [deg]
roll_nom	95.651290533529	Nominal Roll [deg]
revision	3	Processing version of data
ontime	7584.5786331594	Sum of GTIs [s]
livetime	7488.5381316214	Livetime [s]
ontime0	2970.8244278431	Sum of GTIs [s]
ontime1	3066.6508815587	Sum of GTIs [s]
ontime2	2867.1937164366	Sum of GTIs [s]
ontime3	2918.8860967159	Sum of GTIs [s]
ontime6	3099.0613612235	Sum of GTIs [s]
ontime7	7584.5786331594	Sum of GTIs [s]
l2events	1235400	Number of level 2 events

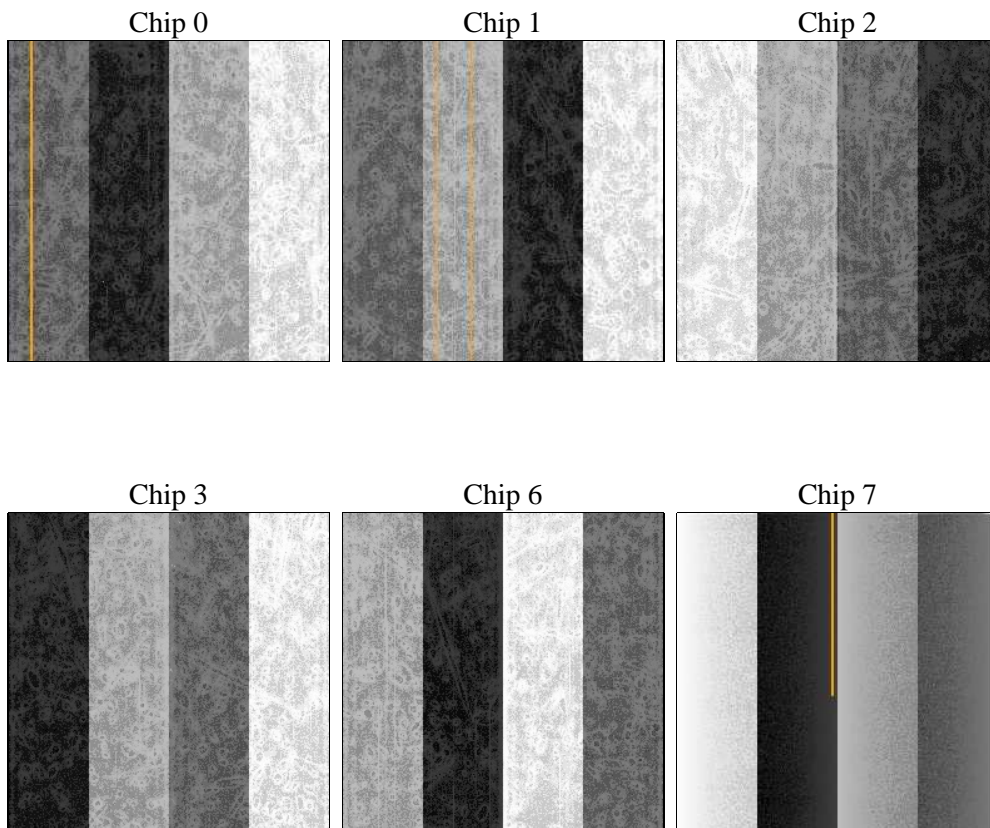
2 OBI

2.1 OBI

2.1.1 Images



2.1.2 Bias



2.1.3 Parameters

obi_num	1	Obi number	sched_exp_time	0.0	[s] Scheduled observation exposure time
ascdsver	8.4.5	Processing system revision	ontime	7584.5786331594	Sum of GTIs [s]
caldsver	4.5.2	 	ontime0	2970.8244278431	Sum of GTIs [s]
date	2012-10-04T22:33:09	Date and time of file creation	ontime1	3066.6508815587	Sum of GTIs [s]
revision	3	Processing version of data	ontime2	2867.1937164366	Sum of GTIs [s]
			ontime3	2918.8860967159	Sum of GTIs [s]
			ontime6	3099.0613612235	Sum of GTIs [s]
			ontime7	7584.5786331594	Sum of GTIs [s]
			l1events	1453011	Number of level 1 events

2.1.4 Events

	ccd 0	ccd 1	ccd 2	ccd 3	ccd 6	ccd 7		ccd 0	ccd 1	ccd 2	ccd 3	ccd 6	ccd 7
level 1 events	189235	196311	185914	189539	208205	483807	grade 0 events	90493	94398	89198	91547	97964	112571
rejected events	23229	23372	24751	24915	26346	43278		47%	48%	47%	48%	47%	23%
rejected %	12%	11%	13%	13%	12%	8%	grade 1 events	495	557	485	572	518	317
								0%	0%	0%	0%	0%	0%
							grade 2 events	29702	30785	28290	28832	31440	96905
								15%	15%	15%	15%	15%	20%
							grade 3 events	10423	10740	10216	10110	11094	43649
								5%	5%	5%	5%	5%	9%
							grade 4 events	10204	10867	9834	10293	11122	43237
								5%	5%	5%	5%	5%	8%
							grade 5 events	1656	1713	1617	1684	1867	8494
								0%	0%	0%	0%	0%	1%
							grade 6 events	25184	26149	23625	23842	30239	144167
								13%	13%	12%	12%	14%	29%
							grade 7 events	21078	21102	22649	22659	23961	34467
								11%	10%	12%	11%	11%	7%

2.2 Compared Parameters

Parameter	Planned	Actual	Parameter	Planned	Actual
Instrument	ACIS	ACIS	Obspar format version number	7	7
Detector	ACIS-012367	ACIS-012367	Obspar file type	PREDICTED	ACTUAL
Grating	NONE	NONE	Obspar update status	NONE	UPDATED
Data mode	FAINT	FAINT	On-chip summing requested	N	N
Observation mode	SECONDARY	SECONDARY	Subarray requested	NONE	NONE
[deg] Pointing RA	0	275.9821736323958	Alternating exposures requested	N	N
[deg] Pointing Dec	0	-1.977543486907415	[s] Primary exposure time	0.000000	3.2
[deg] Pointing Roll	0.0	95.65129053352872			
[mm] SIM focus pos	-0.782348	-0.7809083437167272			
[mm] SIM defocus	0	0.7524282956875696			
[mm] SIM translation stage pos	-233.592463	250.466033080201			
[mm] SIM translation stage offset	0	-0.01005468664627074			
[s] Observation start time (MET)	134326715.576	134326714.55124			
Observation start date	2002-04-04T16:58:36	2002-04-04T16:58:34			
[s] Observation end time (MET)	134338726.526	134338725.50173			
Observation end date	2002-04-04T20:18:47	2002-04-04T20:18:45			
Read mode	TIMED	TIMED			

2.3 Star Slots

2.4 FID Slots

A Summary

A.1 Status

V&V Scientist	Beth Sundheim
V&V Date (YYYY-MM-DD)	2012.10.10
V&V Edition	1
V&V Disposition and Status	OK
V&V Charge Time	7.5845786331594

A.2 Comments