

V&V Reference Report

L2 ASCDS Version : 7.6.8.1

Observation 61239 - L2 Version 001
Chandra X-Ray Center

L2 Processing Date : Sep 9 2006

Contents

1	Front	2
2	OBI	3
2.1	OBI	3
2.1.1	Images	3
2.1.2	Bias	3
2.1.3	Parameters	4
2.1.4	Events	4
2.2	Compared Parameters	5
2.3	Aspect	6
2.4	Star Slots	8
2.5	FID Slots	8
A	Summary	9
A.1	Status	9
A.2	Comments	9

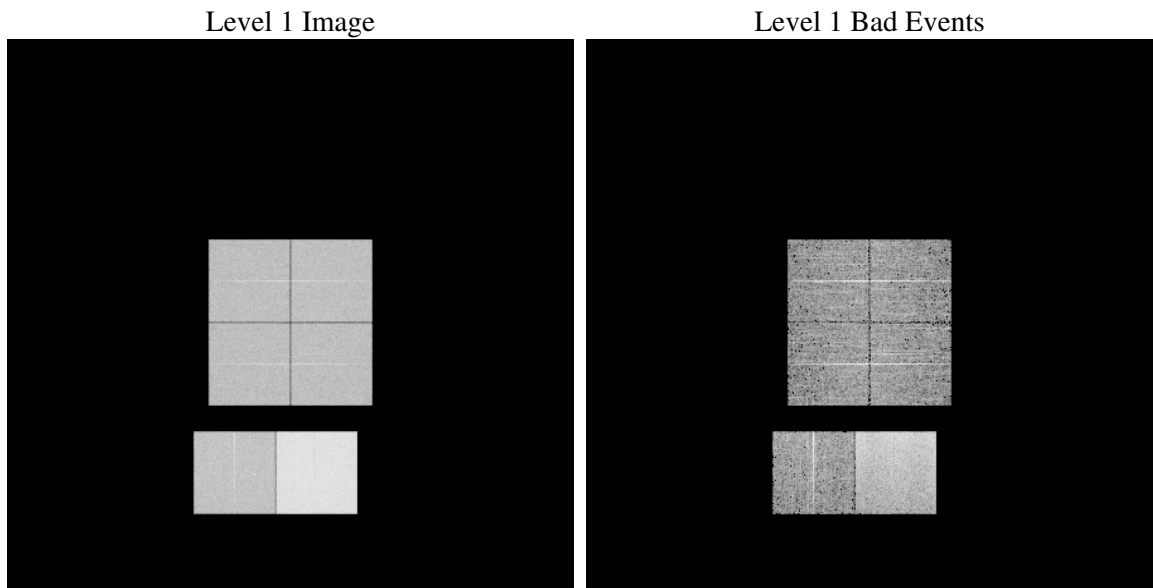
1 Front

seq_num	
obs_id	61239
title	ACIS-012367 diagnostics
observer	CHANDRA engineering request/realtime commanding
object	
dtcycle	0
cycle	P
ra_targ	0.0
dec_targ	0.0
ra_nom	165.03282346312
dec_nom	-35.010001418522
roll_nom	306.94121164131
revision	2
ontime	8351.9999688864
livetime	8246.2419163097
ontime0	3446.6300961971
ontime1	3561.8343535066
ontime2	3354.4091190696
ontime3	3360.8911595941
ontime6	3741.6856144369
ontime7	8351.9999688864
l2events	1289155

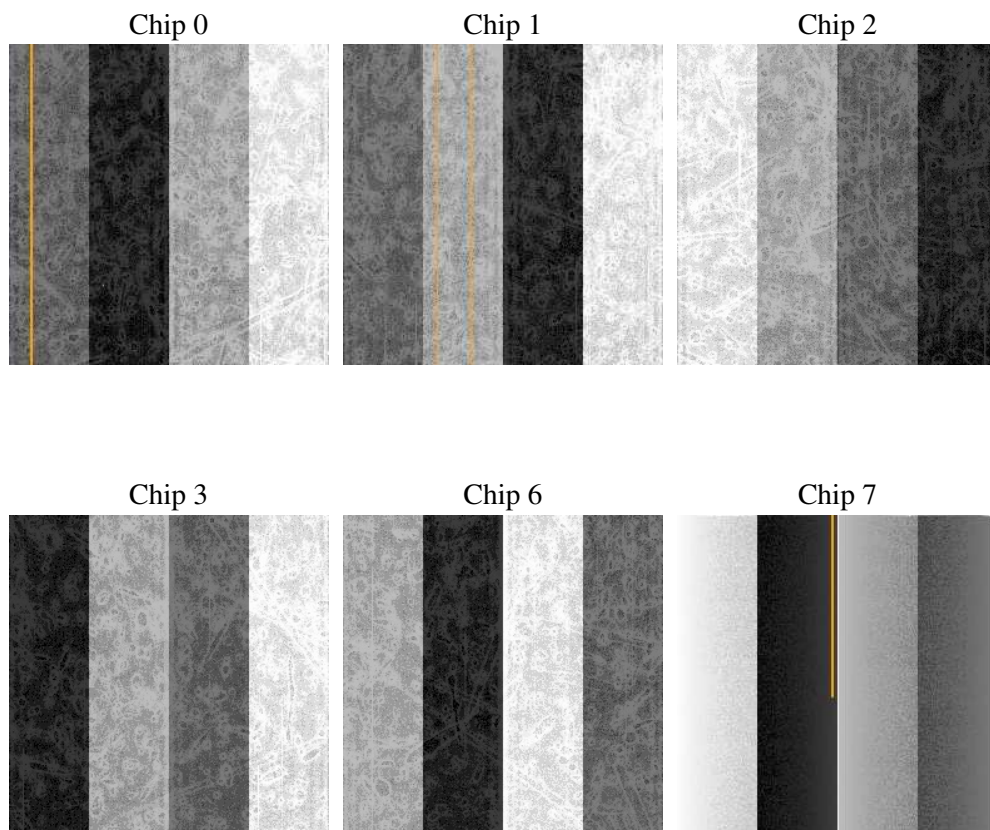
2 OBI

2.1 OBI

2.1.1 Images



2.1.2 Bias



2.1.3 Parameters

obi_num	1
ascdsver	7.6.8.1
caldbver	3.2.3
date	2006-09-09T20:44:42
revision	2

sched_exp_time	0.0
ontime	8462.2562635839
ontime0	3500.3178001046
ontime1	3610.5120340288
ontime2	3396.6047394872
ontime3	3406.3277502954
ontime6	3792.0091583729
ontime7	8462.2562635839
l1events	1561275

2.1.4 Events

	ccd 0	ccd 1	ccd 2	ccd 3	ccd 6	ccd 7
level 1 events	205626	211396	202830	204287	234723	502413
rejected events	28614	28316	28272	29521	31684	70331
rejected %	13%	13%	13%	14%	13%	13%

	ccd 0	ccd 1	ccd 2	ccd 3	ccd 6	ccd 7
grade 0 events	98852	102325	98111	98753	112064	78121
	48%	48%	48%	48%	47%	15%
grade 1 events	508	484	515	502	531	189
	0%	0%	0%	0%	0%	0%
grade 2 events	32098	32910	31341	31267	35681	133763
	15%	15%	15%	15%	15%	26%
grade 3 events	11360	11523	10864	11134	12548	32168
	5%	5%	5%	5%	5%	6%
grade 4 events	11315	11595	11187	11078	12767	31360
	5%	5%	5%	5%	5%	6%
grade 5 events	1799	1900	1726	1819	2080	8398
	0%	0%	0%	0%	0%	1%
grade 6 events	26281	27236	25310	24867	32788	162515
	12%	12%	12%	12%	13%	32%
grade 7 events	23413	23423	23776	24867	26264	55899
	11%	11%	11%	12%	11%	11%

2.2 Compared Parameters

Parameter	Planned	Actual	Parameter	Planned	Actual
Instrument	ACIS	ACIS	Obspar format version number	6	6
Detector	ACIS-012367	ACIS-012367	Obspar file type	PREDICTED	ACTUAL
Grating	NONE	NONE	Obspar update status	NONE	UPDATED
Data mode	FAINT	FAINT	On-chip summing requested	N	N
Observation mode	SECONDARY	SECONDARY	Subarray requested	NONE	NONE
Pointing RA	0	165.0328234631228	Alternating exposures requested	N	N
Pointing Dec	0	-35.01000141852185	Primary exposure time	3.2	3.2
Pointing Roll	0.0	306.9412116413119			
SIM focus pos (mm)	-0.782348	-0.6828225247311905			
SIM defocus (mm)	0	0.8505141146731063			
SIM translation stage pos (mm)	-233.592463	250.466033080201			
SIM translation stage offset (mm)	0	-0.01005468664627074			
Observation start time	134591081.536704	134591080.51197			
Observation start date	2002-04-07T18:24:42	2002-04-07T18:24:40			
Observation end time	134612391.28757	134612390.26284			
Observation end date	2002-04-08T00:19:51	2002-04-08T00:19:50			
Read mode	TIMED	TIMED			

2.3 Aspect

2.4 Star Slots

2.5 FID Slots

A Summary

A.1 Status

V&V Scientist	Jen Lauer
V&V Date (YYYY-MM-DD)	2006.09.10
V&V Edition	1
V&V Disposition and Status	OK
V&V Charge Time	8.35199996

A.2 Comments

The ACIS focal plane temperature was above calibration limits for the first 3 ksec of the observation.