

V&V Reference Report

L2 ASCDS Version : 7.6.8.1

Observation 61234 - L2 Version 001
Chandra X-Ray Center

L2 Processing Date : Sep 11 2006

Contents

1	Front	2
2	OBI	3
2.1	OBI	3
2.1.1	Images	3
2.1.2	Bias	3
2.1.3	Parameters	4
2.1.4	Events	4
2.2	Compared Parameters	5
2.3	Aspect	6
2.4	Star Slots	8
2.5	FID Slots	8
A	Summary	9
A.1	Status	9
A.2	Comments	9

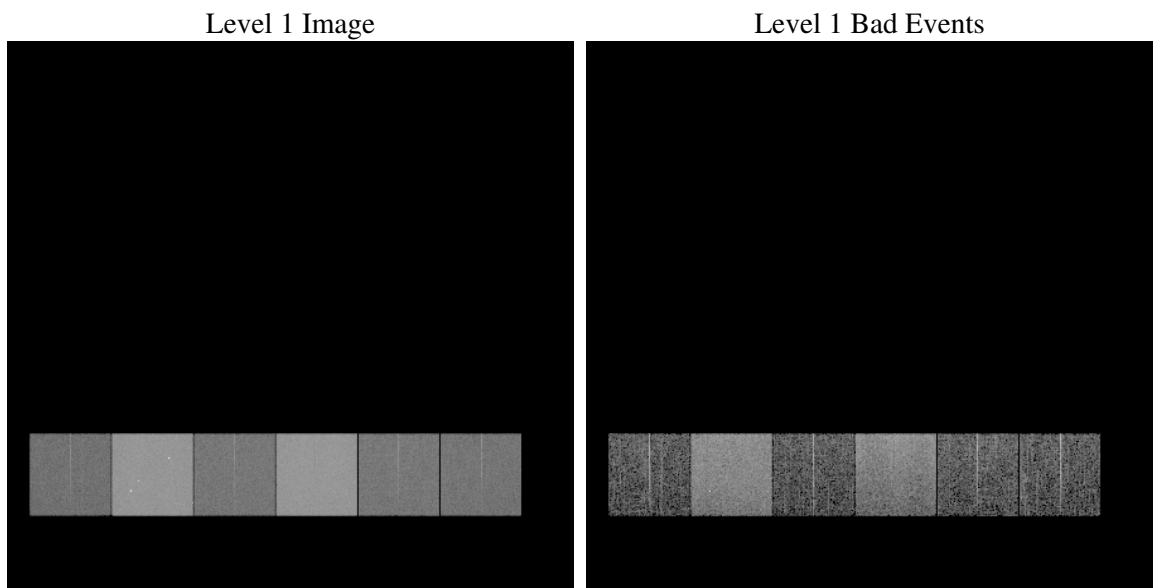
1 Front

seq_num	
obs_id	61234
title	ACIS-456789 diagnostics
observer	CHANDRA engineering request/realtime commanding
object	
dtcycle	0
cycle	P
ra_targ	0.0
dec_targ	0.0
ra_nom	70.034334862653
dec_nom	44.984864634525
roll_nom	295.27158279195
revision	2
ontime	7426.5950972736
livetime	7332.5550783932
ontime4	2707.8470905423
ontime5	8019.7309361696
ontime6	3002.7402112186
ontime7	7426.5950972736
ontime8	3012.5448931158
ontime9	2905.3858417869
l2events	1300922

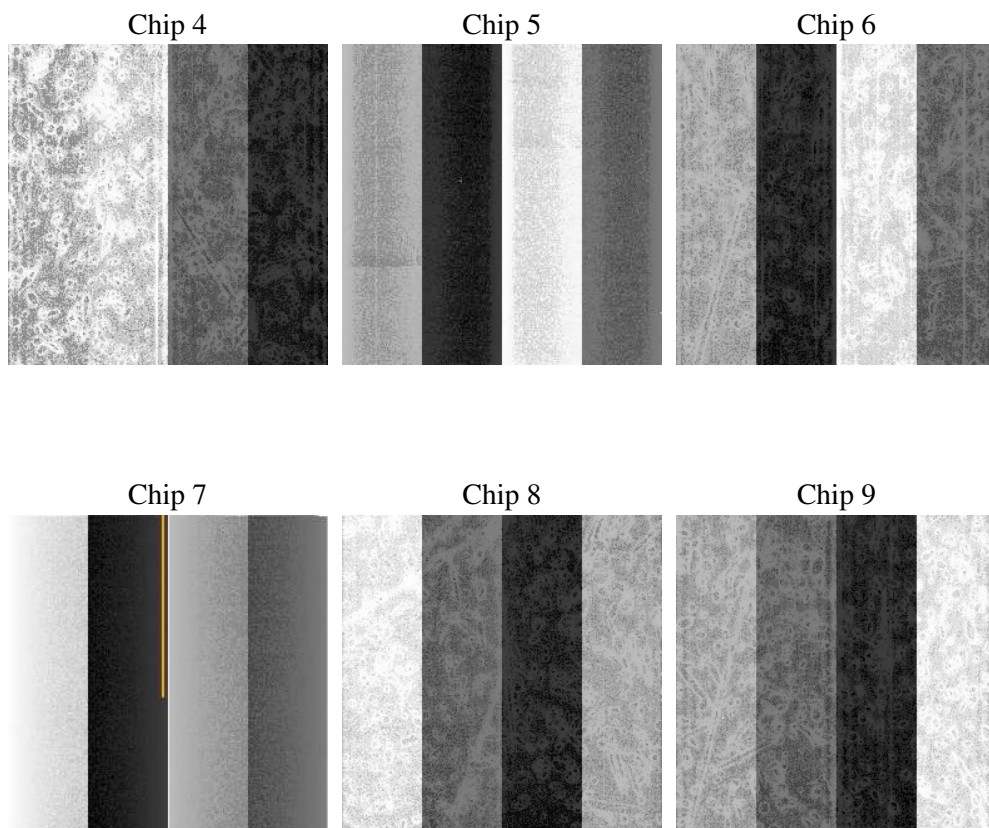
2 OBI

2.1 OBI

2.1.1 Images



2.1.2 Bias



2.1.3 Parameters

obi_num	1
ascdsver	7.6.8.1
caldsver	3.2.3
date	2006-09-11T06:20:13
revision	2

sched_exp_time	0.0
ontime	7428.3777785003
ontime4	2709.5066517591
ontime5	8021.4725773931
ontime6	3004.4408124387
ontime7	7428.3777785003
ontime8	3014.1634143591
ontime9	2907.2095630169
l1events	1568609

2.1.4 Events

	ccd 4	ccd 5	ccd 6	ccd 7	ccd 8	ccd 9
level 1 events	156842	430299	183781	436749	187701	173237
rejected events	21929	65663	21217	53899	24117	22781
rejected %	13%	15%	11%	12%	12%	13%

	ccd 4	ccd 5	ccd 6	ccd 7	ccd 8	ccd 9
grade 0 events	76296	43917	88918	69174	89456	82462
	48%	10%	48%	15%	47%	47%
grade 1 events	410	158	408	135	382	479
	0%	0%	0%	0%	0%	0%
grade 2 events	23923	175498	28281	116058	28970	26575
	15%	40%	15%	26%	15%	15%
grade 3 events	8427	11770	9952	28209	10453	9423
	5%	2%	5%	6%	5%	5%
grade 4 events	8254	11656	10048	27532	10406	9282
	5%	2%	5%	6%	5%	5%
grade 5 events	1331	7355	1636	7165	1836	1647
	0%	1%	0%	1%	0%	0%
grade 6 events	18156	121958	25542	142046	24299	22874
	11%	28%	13%	32%	12%	13%
grade 7 events	20045	57987	18996	46430	21899	20495
	12%	13%	10%	10%	11%	11%

2.2 Compared Parameters

Parameter	Planned	Actual	Parameter	Planned	Actual
Instrument	ACIS	ACIS	Obspar format version number	6	6
Detector	ACIS-456789	ACIS-456789	Obspar file type	PREDICTED	ACTUAL
Grating	NONE	NONE	Obspar update status	NONE	UPDATED
Data mode	FAINT	FAINT	On-chip summing requested	N	N
Observation mode	SECONDARY	SECONDARY	Subarray requested	NONE	NONE
Pointing RA	0	70.03433486265331	Alternating exposures requested	N	N
Pointing Dec	0	44.98486463452468	Primary exposure time	0.000000	3.2
Pointing Roll	0.0	295.2715827919487			
SIM focus pos (mm)	-0.684267	-0.6828225247311905			
SIM defocus (mm)	0	0.8505141146731063			
SIM translation stage pos (mm)	-190.132523	250.466033080201			
SIM translation stage offset (mm)	0	-0.01005468664627074			
Observation start time	135044410.355	135044409.3304			
Observation start date	2002-04-13T00:20:10	2002-04-13T00:20:09			
Observation end time	135066410.956	135066409.93129			
Observation end date	2002-04-13T06:26:51	2002-04-13T06:26:49			
Read mode	TIMED	TIMED			

2.3 Aspect

2.4 Star Slots

2.5 FID Slots

A Summary

A.1 Status

V&V Scientist	Jen Lauer
V&V Date (YYYY-MM-DD)	2006.09.11
V&V Edition	1
V&V Disposition and Status	OK
V&V Charge Time	7.42659509

A.2 Comments