

# V&V Reference Report

## L2 ASCDS Version : 7.6.9

Observation 61224 - L2 Version 001  
Chandra X-Ray Center

L2 Processing Date : Sep 15 2006

## Contents

<b>1</b>	<b>Front</b>	<b>2</b>
<b>2</b>	<b>OBI</b>	<b>3</b>
2.1	OBI . . . . .	3
2.1.1	Images . . . . .	3
2.1.2	Bias . . . . .	3
2.1.3	Parameters . . . . .	4
2.1.4	Events . . . . .	4
2.2	Compared Parameters . . . . .	5
2.3	Aspect . . . . .	6
2.4	Star Slots . . . . .	8
2.5	FID Slots . . . . .	8
<b>A</b>	<b>Summary</b>	<b>9</b>
A.1	Status . . . . .	9
A.2	Comments . . . . .	9

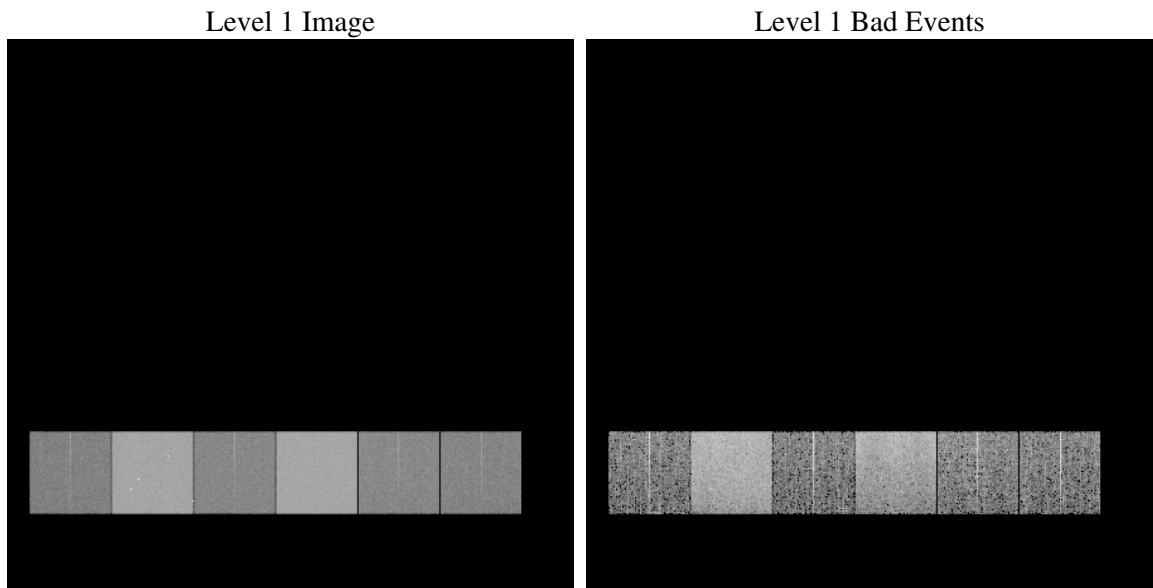
# 1 Front

seq_num	&#160
obs_id	61224
title	ACIS-456789 diagnostics
observer	CHANDRA engineering request/realtime commanding
object	&#160
dtcycle	0
cycle	P
ra_targ	0.0
dec_targ	0.0
ra_nom	181.00132471945
dec_nom	4.9713978760459
roll_nom	239.87213007895
revision	2
ontime	6731.2488428652
livetime	6646.0137169454
ontime4	2550.4923067987
ontime5	7266.0497262776
ontime6	2793.5286086202
ontime7	6731.2488428652
ontime8	2842.2267469466
ontime9	2679.9696468115
l2events	1209760

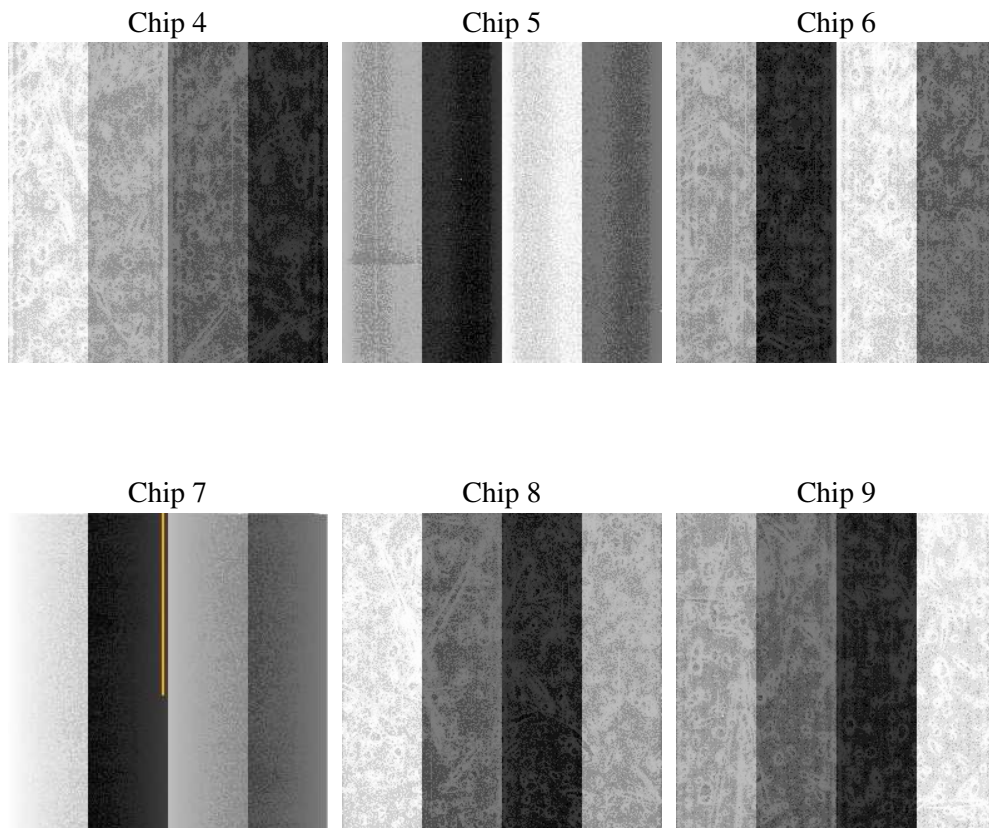
## 2 OBI

### 2.1 OBI

#### 2.1.1 Images



#### 2.1.2 Bias



### 2.1.3 Parameters

obi_num	3
ascdsver	7.6.9
caldsver	3.2.3
date	2006-09-15T05:09:04
revision	2

sched_exp_time	0.0
ontime	6731.5755191743
ontime4	2550.6958630979
ontime5	7266.3353625834
ontime6	2793.7732049227
ontime7	6731.5755191743
ontime8	2842.3892632723
ontime9	2680.3373631239
l1events	1449650

### 2.1.4 Events

	ccd 4	ccd 5	ccd 6	ccd 7	ccd 8	ccd 9
level 1 events	148630	392536	172056	397836	177742	160850
rejected events	19850	57188	19539	45309	22575	20276
rejected %	13%	14%	11%	11%	12%	12%

	ccd 4	ccd 5	ccd 6	ccd 7	ccd 8	ccd 9
grade 0 events	72714	45940	83150	67703	85185	76995
	48%	11%	48%	17%	47%	47%
grade 1 events	399	216	395	139	402	381
	0%	0%	0%	0%	0%	0%
grade 2 events	22857	156943	26585	103932	27481	24547
	15%	39%	15%	26%	15%	15%
grade 3 events	7882	12339	9500	27271	9853	8692
	5%	3%	5%	6%	5%	5%
grade 4 events	7933	12005	9424	26738	9758	8740
	5%	3%	5%	6%	5%	5%
grade 5 events	1208	6603	1487	6450	1657	1514
	0%	1%	0%	1%	0%	0%
grade 6 events	17394	108121	23858	126883	22890	21600
	11%	27%	13%	31%	12%	13%
grade 7 events	18243	50369	17657	38720	20516	18381
	12%	12%	10%	9%	11%	11%

## 2.2 Compared Parameters

Parameter	Planned	Actual	Parameter	Planned	Actual
Instrument	ACIS	ACIS	Obspar format version number	6	6
Detector	ACIS-456789	ACIS-456789	Obspar file type	PREDICTED	ACTUAL
Grating	NONE	NONE	Obspar update status	NONE	UPDATED
Data mode	FAINT	FAINT	On-chip summing requested	N	N
Observation mode	SECONDARY	SECONDARY	Subarray requested	NONE	NONE
Pointing RA	0	181.0013247194488	Alternating exposures requested	N	N
Pointing Dec	0	4.971397876045888	Primary exposure time	0.000000	3.2
Pointing Roll	0.0	239.872130078946			
SIM focus pos (mm)	-0.684267	-0.6828225247311905			
SIM defocus (mm)	0	0.8505141146731063			
SIM translation stage pos (mm)	-190.132523	250.466033080201			
SIM translation stage offset (mm)	0	-0.01005468664627074			
Observation start time	136158923.65	136158922.62574			
Observation start date	2002-04-25T21:55:24	2002-04-25T21:55:22			
Observation end time	136169194.151	136169193.12615			
Observation end date	2002-04-26T00:46:34	2002-04-26T00:46:33			
Read mode	TIMED	TIMED			

## 2.3 Aspect



## **2.4 Star Slots**

## **2.5 FID Slots**



## A Summary

### A.1 Status

V&V Scientist	Doug Morgan
V&V Date (YYYY-MM-DD)	2006.09.15
V&V Edition	1
V&V Disposition and Status	OK
V&V Charge Time	6.73124884

### A.2 Comments