

V&V Reference Report

L2 ASCDS Version : 8.4.5

Observation 61214 - L2 Version 3
Chandra X-Ray Center

L2 Processing Date : Oct 7 2012

Contents

1	Front	2
2	OBI	3
2.1	OBI	3
2.1.1	Images	3
2.1.2	Bias	3
2.1.3	Parameters	4
2.1.4	Events	4
2.2	Compared Parameters	5
2.3	Star Slots	6
2.4	FID Slots	6
A	Summary	7
A.1	Status	7
A.2	Comments	7

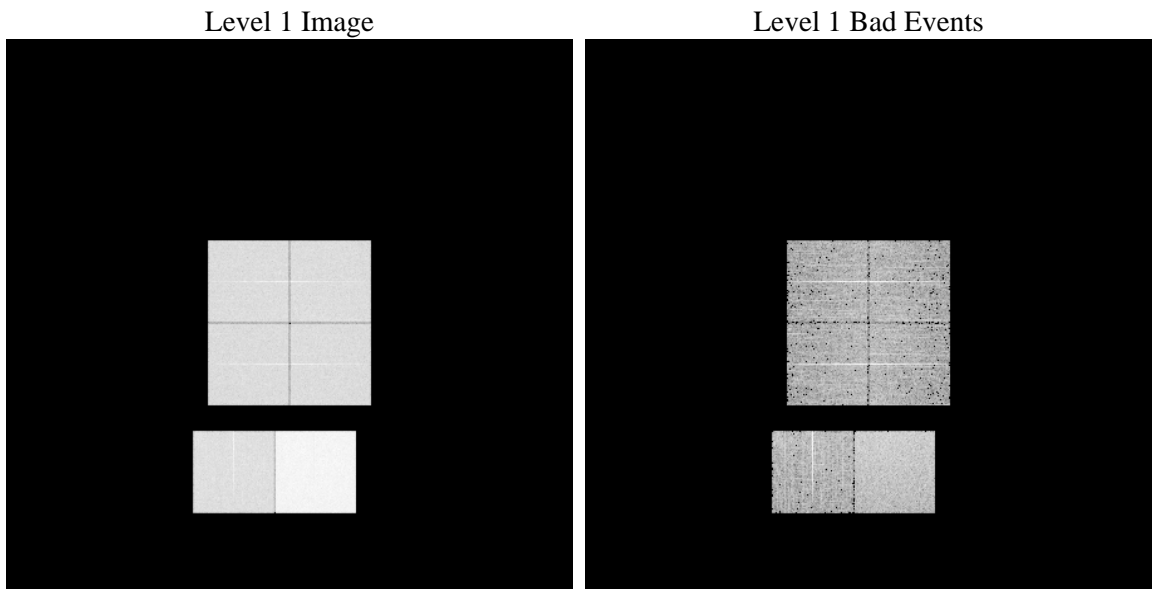
1 Front

seq_num	 	Sequence number
obs_id	61214	Observation id
title	ACIS-012367 diagnostics	Proposal title
observer	CHANDRA engineering request/realtime commanding	Principal investig
object	 	Source name
dtcycle	0	
cycle	P	events from which exps? Prim/Second/Both
ra_targ	0.0	Observer's specified target RA [deg]
dec_targ	0.0	Observer's specified target Dec [deg]
ra_nom	179.00445836236	Nominal RA [deg]
dec_nom	0.97171760114077	Nominal Dec [deg]
roll_nom	246.10251364066	Nominal Roll [deg]
revision	3	Processing version of data
ontime	8460.7999684811	Sum of GTIs [s]
livetime	8353.664224798	Livetime [s]
ontime0	3631.7421399951	Sum of GTIs [s]
ontime1	3647.9469815493	Sum of GTIs [s]
ontime2	3505.3422580957	Sum of GTIs [s]
ontime3	3544.23452878	Sum of GTIs [s]
ontime6	3835.9263645113	Sum of GTIs [s]
ontime7	8460.7999684811	Sum of GTIs [s]
l2events	1319103	Number of level 2 events

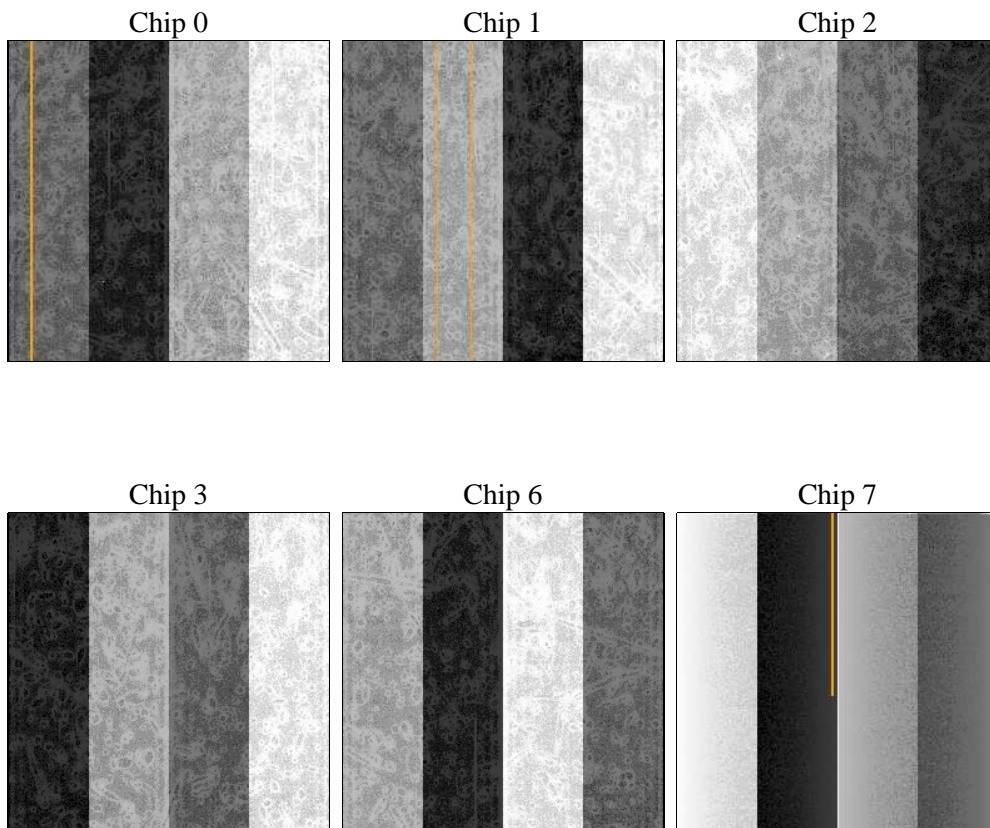
2 OBI

2.1 OBI

2.1.1 Images



2.1.2 Bias



2.1.3 Parameters

obi_num	0	Obi number	sched_exp_time	0.0	[s] Scheduled observation exposure time
ascdsver	8.4.5	Processing system revision	ontime	8460.7999684811	Sum of GTIs [s]
caldsver	4.5.2	 	ontime0	3631.7421399951	Sum of GTIs [s]
date	2012-10-07T12:06:51	Date and time of file creation	ontime1	3647.9469815493	Sum of GTIs [s]
revision	3	Processing version of data	ontime2	3505.3422580957	Sum of GTIs [s]
			ontime3	3544.23452878	Sum of GTIs [s]
			ontime6	3835.9263645113	Sum of GTIs [s]
			ontime7	8460.7999684811	Sum of GTIs [s]
			l1events	1558786	Number of level 1 events

2.1.4 Events

	ccd 0	ccd 1	ccd 2	ccd 3	ccd 6	ccd 7		ccd 0	ccd 1	ccd 2	ccd 3	ccd 6	ccd 7
level 1 events	209563	210754	205612	208096	232101	492660	grade 0 events	100956	101555	99049	101398	110007	112068
rejected events	26145	26470	26827	27157	30306	46496		48%	48%	48%	48%	47%	22%
rejected %	12%	12%	13%	13%	13%	9%	grade 1 events	499	530	453	540	540	287
								0%	0%	0%	0%	0%	0%
							grade 2 events	32514	32648	31578	31627	34756	98346
								15%	15%	15%	15%	14%	19%
							grade 3 events	11529	11620	11144	11463	12200	45089
								5%	5%	5%	5%	5%	9%
							grade 4 events	11552	11566	11198	11285	12537	44570
								5%	5%	5%	5%	5%	9%
							grade 5 events	1847	1754	1718	1858	2160	9342
								0%	0%	0%	0%	0%	1%
							grade 6 events	26867	26895	25816	25166	32295	146091
								12%	12%	12%	12%	13%	29%
							grade 7 events	23799	24186	24656	24759	27606	36867
								11%	11%	11%	11%	11%	7%

2.2 Compared Parameters

Parameter	Planned	Actual	Parameter	Planned	Actual
Instrument	ACIS	ACIS	Obspar format version number	7	7
Detector	ACIS-012367	ACIS-012367	Obspar file type	PREDICTED	ACTUAL
Grating	NONE	NONE	Obspar update status	NONE	UPDATED
Data mode	FAINT	FAINT	On-chip summing requested	N	N
Observation mode	SECONDARY	SECONDARY	Subarray requested	NONE	NONE
[deg] Pointing RA	0	179.0044583623575	Alternating exposures requested	N	N
[deg] Pointing Dec	0	0.9717176011407723	[s] Primary exposure time	0.000000	3.2
[deg] Pointing Roll	0.0	246.1025136406617			
[mm] SIM focus pos	-0.782348	-0.7809083437167272			
[mm] SIM defocus	0	0.7524282956875696			
[mm] SIM translation stage pos	-233.592463	250.466033080201			
[mm] SIM translation stage offset	0	-0.01005468664627074			
[s] Observation start time (MET)	136875423.28	136875422.25495			
Observation start date	2002-05-04T04:57:03	2002-05-04T04:57:02			
[s] Observation end time (MET)	136896733.031	136896732.00581			
Observation end date	2002-05-04T10:52:13	2002-05-04T10:52:12			
Read mode	TIMED	TIMED			

2.3 Star Slots

2.4 FID Slots

A Summary

A.1 Status

V&V Scientist	Beth Sundheim
V&V Date (YYYY-MM-DD)	2012.10.17
V&V Edition	1
V&V Disposition and Status	OK
V&V Charge Time	8.4607999684811

A.2 Comments